

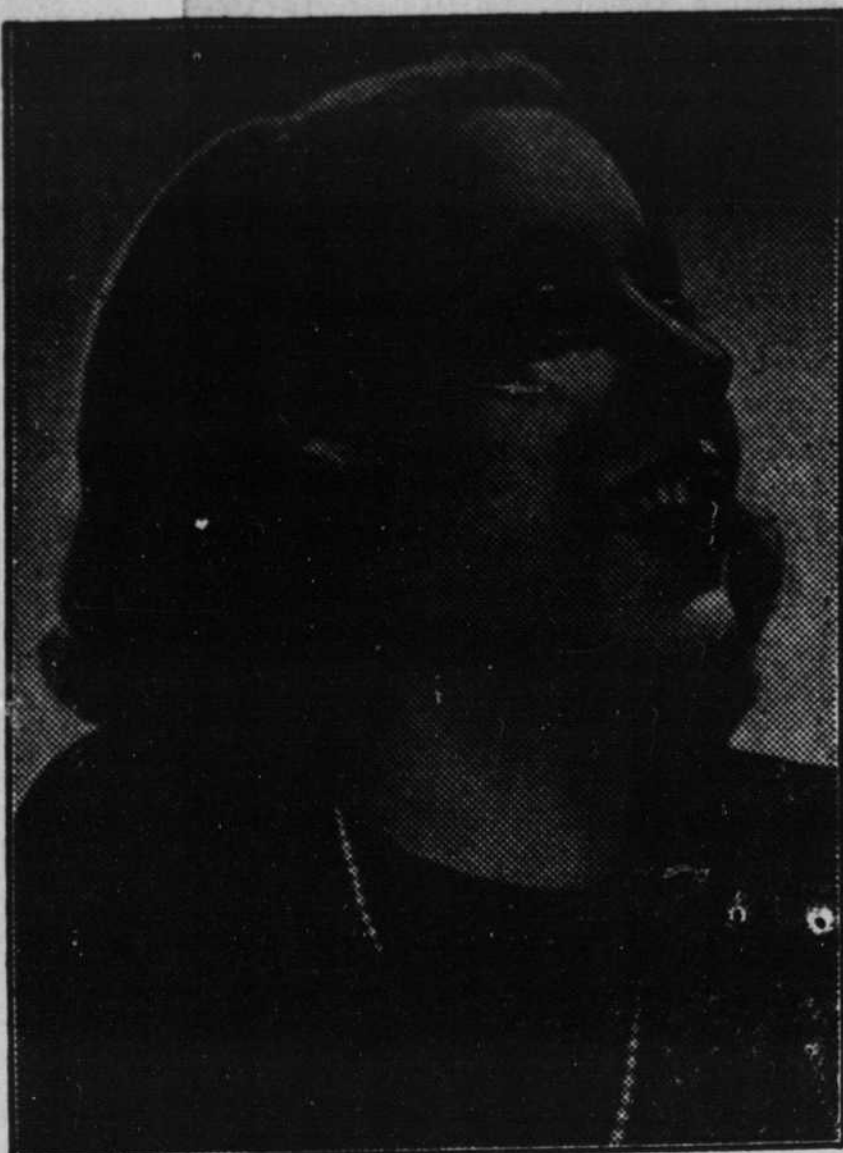
## Most-Made-Love-To

**G**OLDEN-HAIRED Gretchen Davidson is probably the most-made-love-to girl in radio.

As leading lady in "Carol Kennedy's Romance," a dramatic airwave serial, and as "Martha Brent" in the stage play "Many Mansions," it's Gretchen's job to be romantic from early morning until late at night.

In "Carol Kennedy's Romance" which is heard five times weekly Monday through Friday from 11:15 to 11:30 a.m. EST over CBS network, the slender young actress encounters a variety of thrilling love-making. As the story goes, there's Gary Crandall, a suave and sophisticated man about town; the devoted college boy; a cold, calculating gangster and the sincere and serious minded Dr. Owen Craig—all hoping to win the affection of lovely "Carol."

Between her radio and stage appearances Gretchen keeps herself in a romantic mood with a new hair style, a new shade of finger nail polish or something different in the way of a corsage. The other day she stepped into the studio with a bouquet of bright red tomatoes on her coat lapel—artificial, of course.



Gretchen Davidson

"Accessories are important factors in making you feel romantic even at an early morning rehearsal," said the actress. "Perfume is another aid in the business of dramatizing romance. So is jewelry," she added.

## Scouts Govern State Capitol

CARSON CITY, Nev., Feb. 17—Laurels crowned the brows of Boy Scouts in Carson City, Nev., when they took over the management of the state government.

All state officials gathered in Governor Kirman's office shortly after ten o'clock to relinquish their posts for a day to the Nevada Scouts. Scout Bruce Bowen, acting as governor, read a proclamation which gave the members of his troops authority to control state affairs, and then administered the scout oath to his fellow workers. Governor Kirman officiated at the introductions between scout and state officials, acting for the Supreme Court dignitaries who greeted their successors at their own offices in the Supreme Court building later in the morning.

Governor Bruce Bowen pinned an honorary scout badge on Governor Kirman's lapel after which state business was resumed under scout control.

Acting Controller Bruce Shaw was given a real "workout" by Controller Henry C. Schmidt before he was officially inducted into office. Mr. Schmidt insisted that the 'Controller for a day' answer a telephone call asking for bond information.

Following luncheon with their respective state officials at the Arlington hotel, the scouts showed a movie in the lobby of the Scout Jam-boree in Washington, D. C., last year, at which time a sagebrush wreath given the Scouts by Governor Kirman was placed on the tomb of the Unknown Soldier.

Seventeen outstanding scouts were selected to represent their troops

### ARIZONA'S BIRTHDAY

"We, the people of the State of Arizona, grateful to Almighty God for our liberty, do ordain this constitution . . . ." reads the first lines of that accepted act by which this state has been governed since February 14, 1912, when President William Howard Taft affixed his signature to the congressional act which admitted it to the United States, under a state government.

It is a long trek from the days of the Conquistadors to the present moment. The plodding pioneer days have passed and we confidently face today the rising sun of a new era. Mining, agriculture and stock raising are yet in the development stage. The future of Arizona can well be pictured with a halo of glory for its accomplishments made and those to be made.

Nature gave to Arizona its blessing of material riches. Mortal man has profited by these conditions and a wonderful political subdivision has taken its place in the enrollment of federal states. Of the eleven western states it ranks highest in mineral production. Its fertile acres have brought millions to our people. With climates that vary from the sunny southlands to a frigid north, varying according to elevation and season, Arizona starts its twenty-seventh year of statehood. Arizona starts its twenty-seventh year of statehood with the heartiest support and cooperation of half a million loyal citizens.—Mohave County Miner.

and communities in the first event of its kind in the history of Nevada, in recognition of Boy Scout Day in this state, and the first time in the annals of the Boy Scout movement that an entire state has given such an honor to its youth.

## Three Million Jobs Are Lost

President Roosevelt in his message to Congress asking an additional appropriation of \$250,000,000 relief funds to be used between now

and July 1, states that 3,000,000 persons have lost their jobs in the United States during the past three months.

The President's request, if granted by Congress will increase fiscal expenditures for the fiscal year to \$2,009,000,000 and increase the prospective treasury deficit to \$1,338,100,000.



LOS ANGELES TO CHICAGO

34.50 ONE WAY in Coaches  
57.35 Round Trip

+49.90 ONE WAY  
74.00 Round Trip

Good in Challenger Sleepers BERTH EXTRA

90c PER DAY is all you need spend for three delicious, wholesome meals.

plain as Black & White why we ride the

# Challenger

UNION PACIFIC

IT'S SMART to be thrifty  
... Modern travel accommodations... splendid service... low cost.

Specially designed CHALLENGER Sleeping Cars—approximately half the cost of Standard Pullman Rates.

New streamlined coaches—reclining comfortable lounge seats—Porter Service—Soft blue night lights—Free pillows.

Registered Nurse-Stewardess looks after the welfare and comfort of all passengers.

Famous CHALLENGER Meals—

Breakfast 25c Luncheon 30c Dinner 35c

From Las Vegas—\$34.50 One Way, \$57.35 round trip (in coaches) \$43.06 one way, \$66.66 round trip (in Challenger Sleepers) Berth Extra.

Other fine Union Pacific trains—The PACIFIC LIMITED—THE LOS ANGELES LIMITED—also the famous NEW STREAMLINER, City of Los Angeles, providing 39 1/4 hour service from Los Angeles to Chicago.

ASK ABOUT SUN VALLEY, IDAHO—America's Newest Winter Sports Resort

For information, reservation and tickets, apply to

IRA V. HELMICK,  
Passenger Representative  
LAS VEGAS, NEVADA

THE PROGRESSIVE  
UNION PACIFIC RAILROAD