


# BEACON POINT

AT THE LAKES

BEACON POINT



# BEACON POINT

A T T H E L A K E S

UNIT 3    PHASE II

<u>MODEL</u>	<u>SQ/FT</u>	<u>BEDROOMS</u>	<u>BATHS</u>	<u>FLOORS</u>	<u>NEW PHASE</u>
HARBOR	1,837	3	2	1 Story	130,600
SPYGLASS	2,055	3	2½	2 Story	138,800
LAGOON	2,203	4	2	1 Story	143,600
WANDERER	2,428	4	2½	2 Story	149,800

ADDITIONAL CHARGE FOR 3-CAR GARAGE \$ 3,000.00

**METRO MARKETING**  
& SALES INC.

**INGRUN ALBERT**  
SALES REPRESENTATIVE

Model Home (702) 363-5500

4535 W. SAHARA AVENUE, SUITE 204  
LAS VEGAS, NEVADA 89102 • (702) 368-7766

**M**ETRO **M**ARKETING  
& **S**ALES INC.

**INGRUN ALBERT**  
SALES REPRESENTATIVE

Model Home (702) 363-5500

4535 W. SAHARA AVENUE, SUITE 204  
LAS VEGAS, NEVADA 89102 • (702) 368-7766

# **BEACON POINT** A T T H E L A K E S

## UNIT 3    PHASE II

<u>MODEL</u>	<u>SQ/FT</u>	<u>BEDROOMS</u>	<u>BATHS</u>	<u>FLOORS</u>	<u>NEW PHASE</u>
HARBOR	1,837	3	2	1 Story	130,600
SPYGLASS	2,055	3	2½	2 Story	138,800
LAGOON	2,203	4	2	1 Story	143,600
WANDERER	2,428	4	2½	2 Story	149,800

ADDITIONAL CHARGE FOR 3-CAR GARAGE \$ 3,000.00

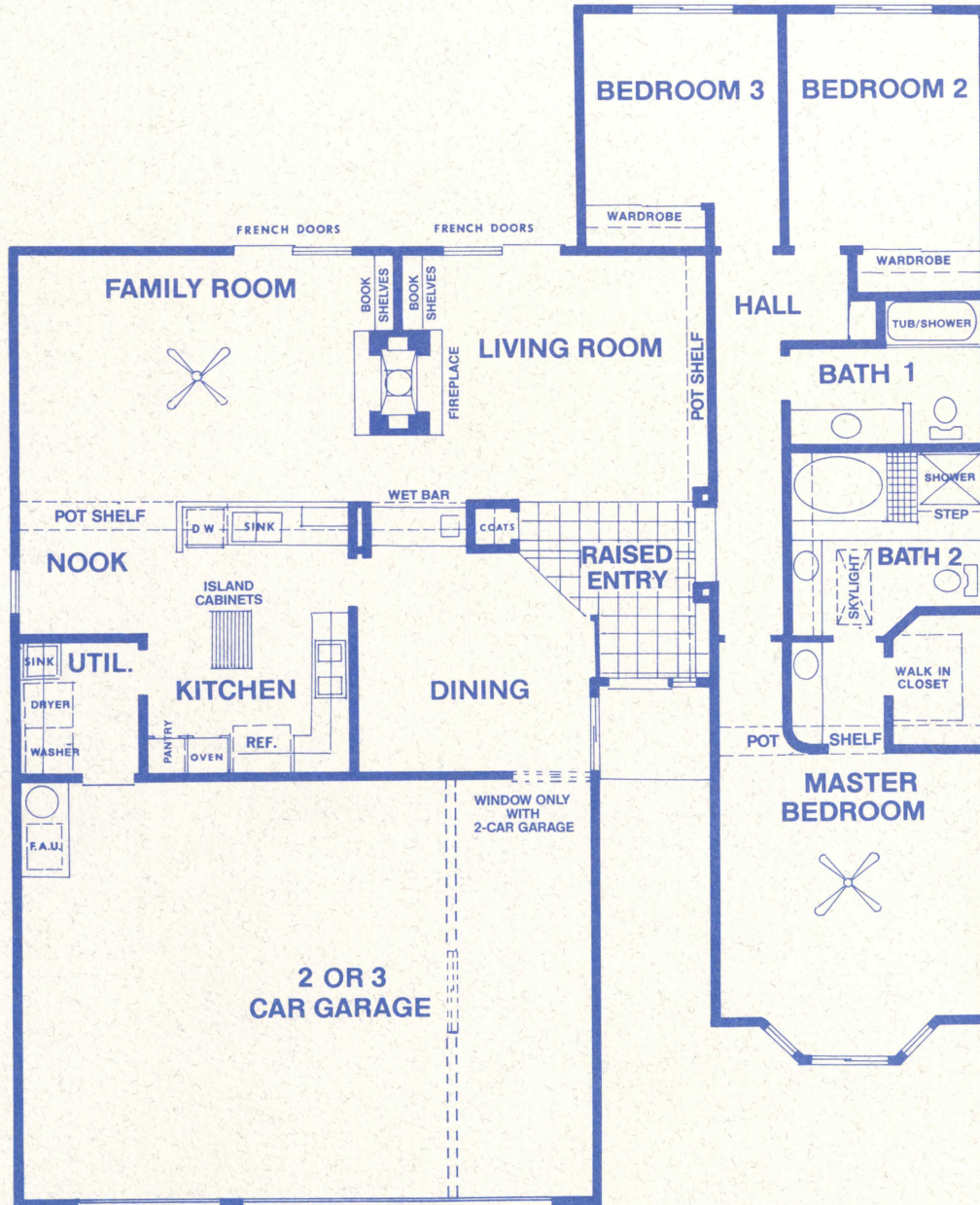
SALES OFFICE  
363-5500



FEBRUARY 25, 1988

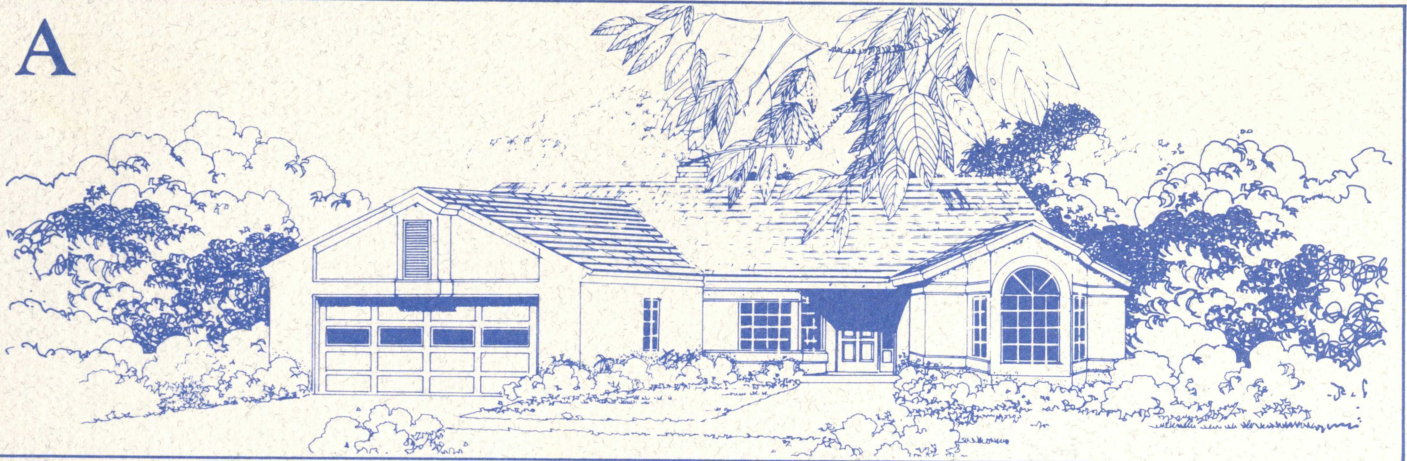
# BEACON POINT HARBOR

3 Bedroom / 2 Bath

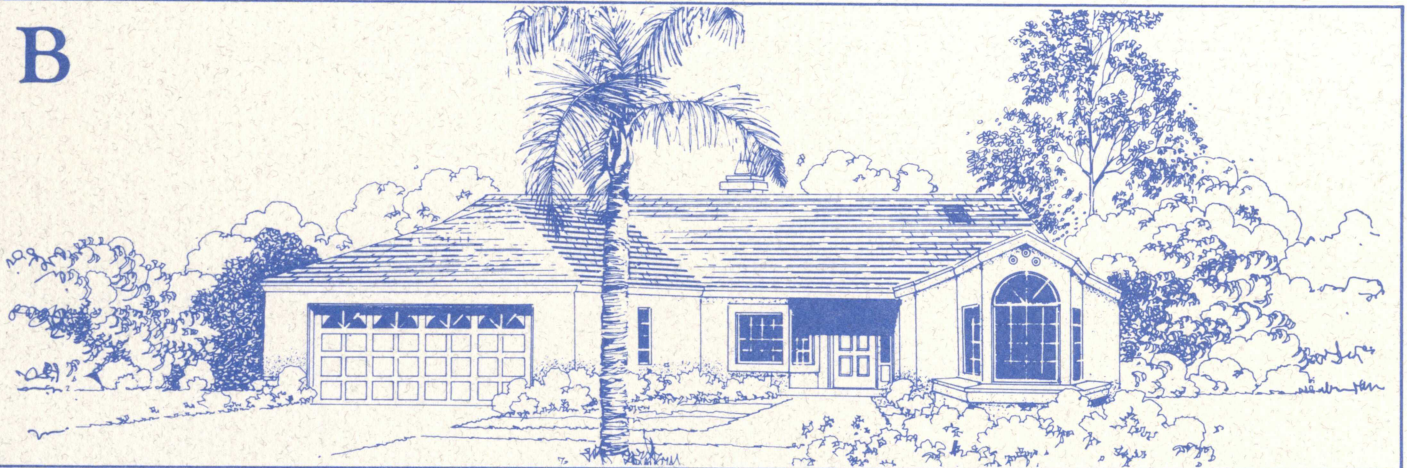


Due to fluctuation in market conditions and product availability, Chism Homes, Inc. reserve the right to modify or change plans, specifications, features or prices without prior notice or obligation. All drawings shown are artist's conceptions.

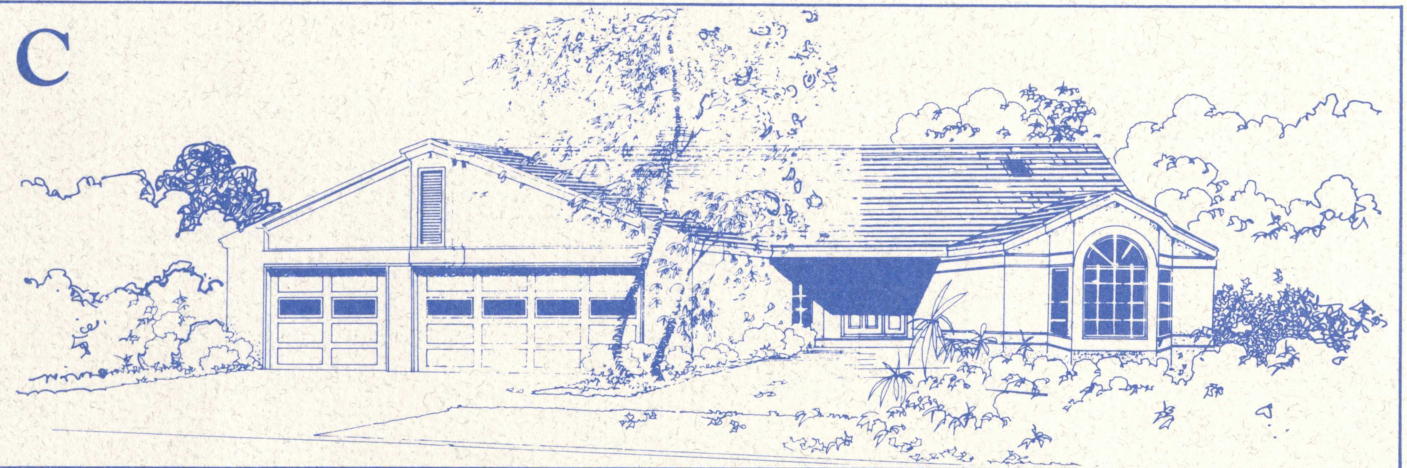
A



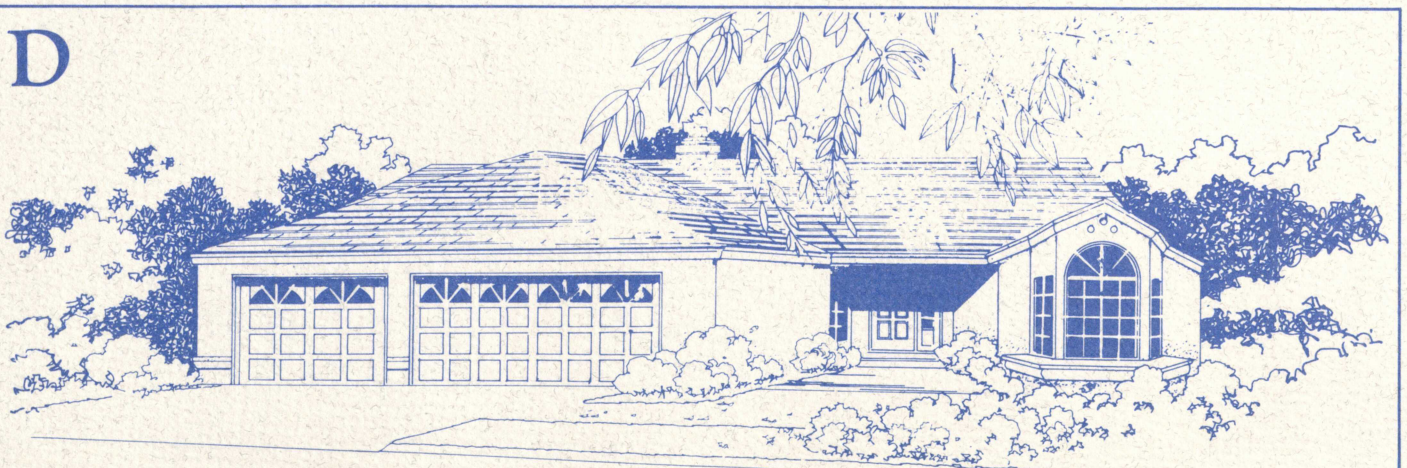
B



C



D



# **BEACON POINT** FEATURES

## **INTERIOR**

- Beautifully stained doors & trim
- Ceramic tile raised entries
- Living rooms and separate family rooms
- Vaulted ceilings
- French doors
- Bay windows
- 100% nylon carpeting throughout
- Woodburning fireplaces with gas outlets
- Wet bars
- Natural wood cap on stairway rails
- Divided light windows (on fronts)
- Wood window sills
- Decorative pot shelves
- Silent light switches
- Premium quality light fixtures
- Ceiling fans
- Programmable thermostats
- Floor safes
- Smoke detectors
- Pre-wired for telephone, intercom & security alarms
- Cable TV services available
- Programmable door chimes

## **KITCHEN**

- Self-cleaning electric ovens with microwaves
- Separate gas cook tops (electric optional)
- Upgraded dishwashers with pot scrubber cycles
- Heavy-duty garbage disposals
- Water lines to refrigerators with ice-maker panels
- Ash wood cabinets
- Built-in food centers
- Decorator brass faucets
- Ceramic-tile countertops
- Luminous ceilings
- Dimmer switches in dining rooms

## **BEDROOM/BATH**

- Walk-in wardrobe closets
- Mirrored wardrobe doors
- Separate showers in master baths
- Raised roman tubs in master baths
- Ceramic tile at tubs & showers
- Double-sinks & vanities in master baths
- Ceramic-tile vanity tops
- Polished brass plumbing fixtures

## **GARAGE**

- Roll-up sectional garage doors
- Entire garage sheetrocked - painted

## **UTILITY ROOM**

- Rinse sinks
- Laundry cabinets
- Stub-outs for water softeners
- Washer & Dryer facilities
- 200 Amp electric panels

## **EXTERIOR**

- Covered entries
- Lighted entries
- Solid core insulated entry doors
- Brass lever door handles
- Tile roofs
- Lighted street addresses
- Gas barbeque outlets
- Seeded front & side yards
- Rear & side decorative block walls

## **ENERGY SAVERS**

- Nu-wall stucco system
- R-17 wall insulation system
- R-30 ceiling insulation
- Weatherstripping on all exterior doors
- Dual-pane windows & glass doors
- Central refrigerated air conditioning systems
- Forced air heating systems

## **ADDITIONAL FEATURES**

- Double-door entries (Some Models)
- Arched top windows
- "Butcher-Block" islands
- Recessed luminous ceilings
- Separate dining rooms
- Built-in desk & bookshelves
- Double-doors in master bedrooms
- Skylights
- Three-car garages
- Pre-plumbed for vacuum systems

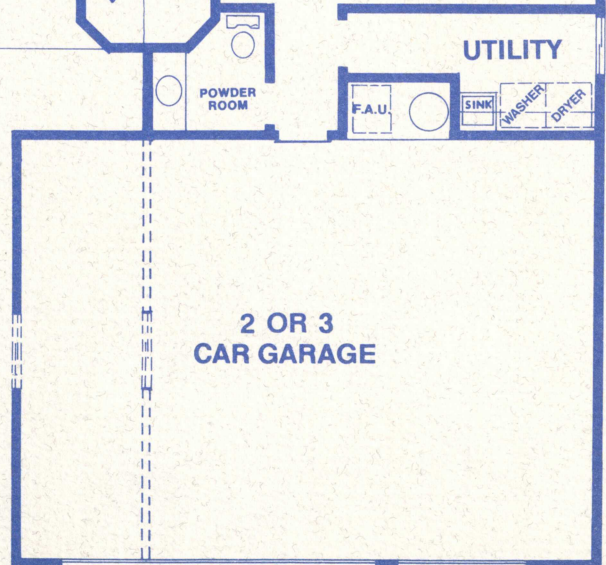
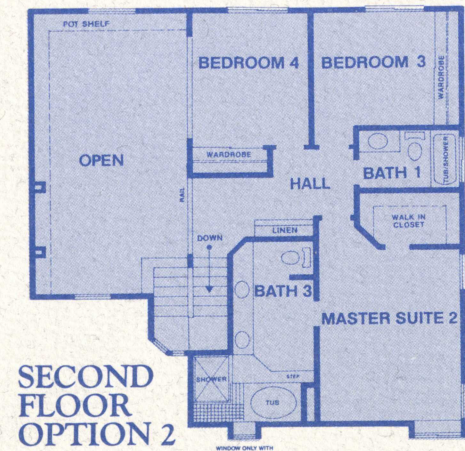
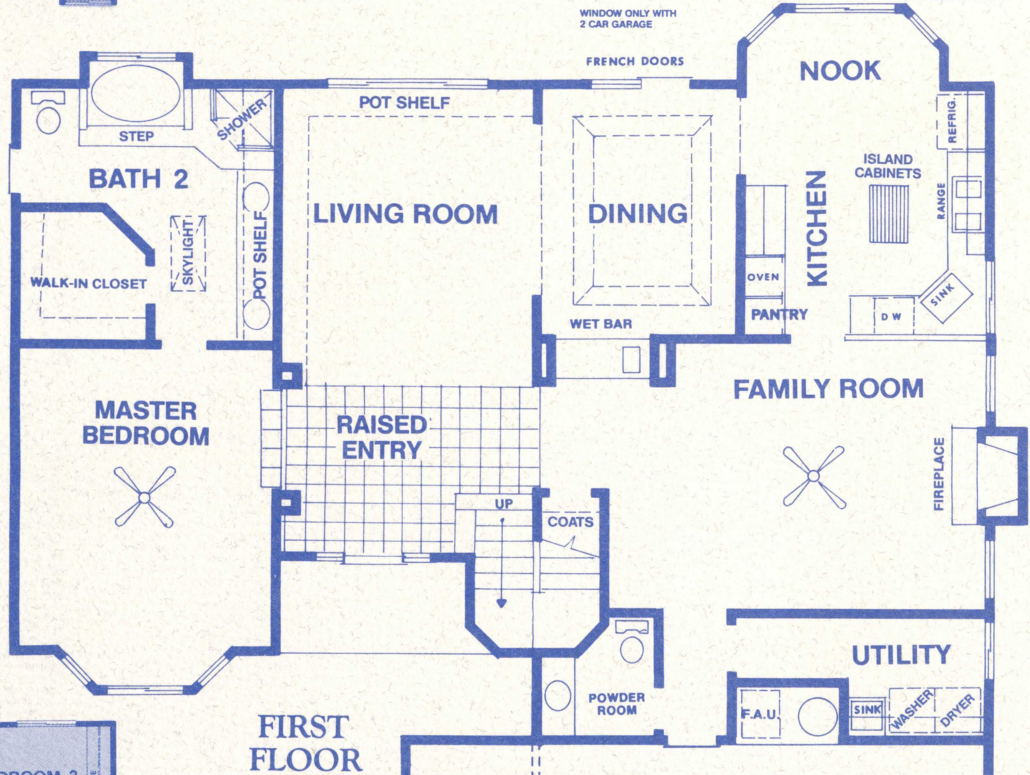
## **OPTIONAL FEATURES**

- Intercom systems
- Security alarm systems
- 220 outlets for dryers
- Sprinkler systems
- Stamped concrete driveways
- Automatic garage door openers



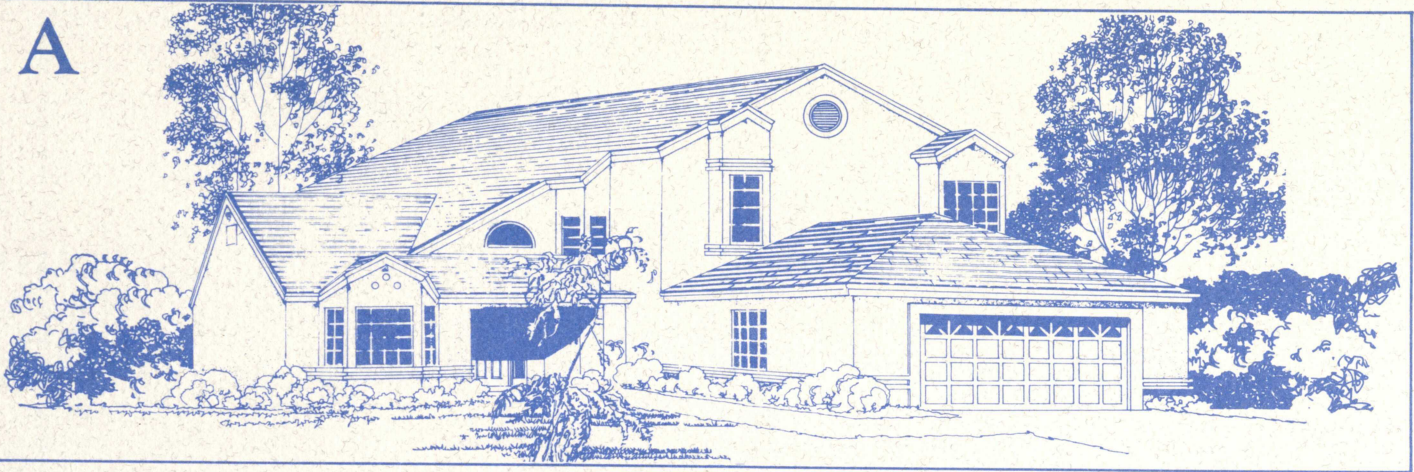
# BEACON POINT WANDERER

4 Bedroom / 2½ Bath

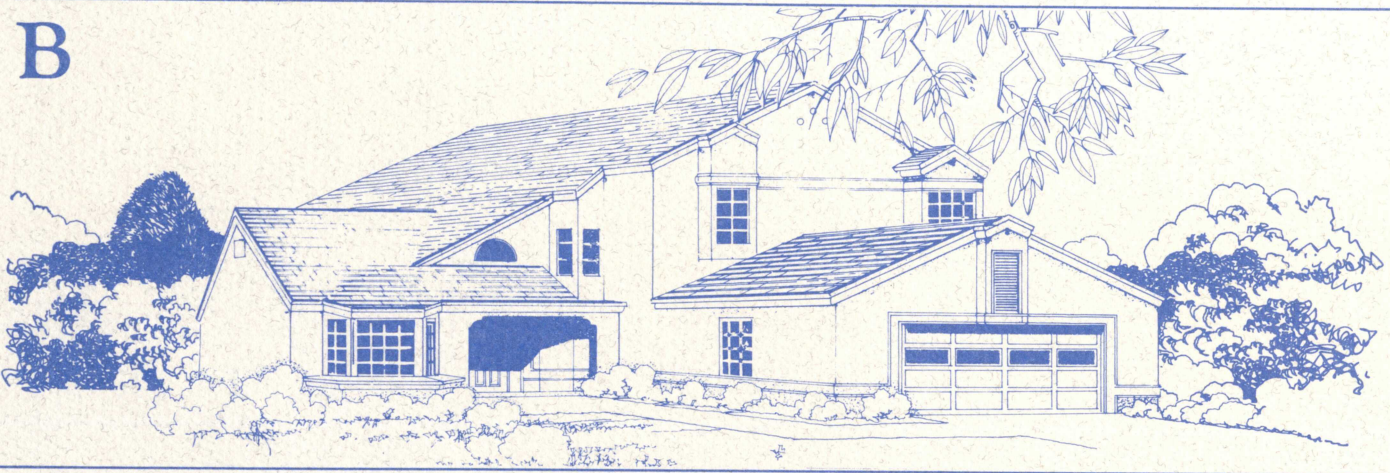


Due to fluctuation in market conditions and product availability, Chism Homes, Inc. reserve the right to modify or change plans, specifications, features or prices without prior notice or obligation. All drawings shown are artist's conceptions.

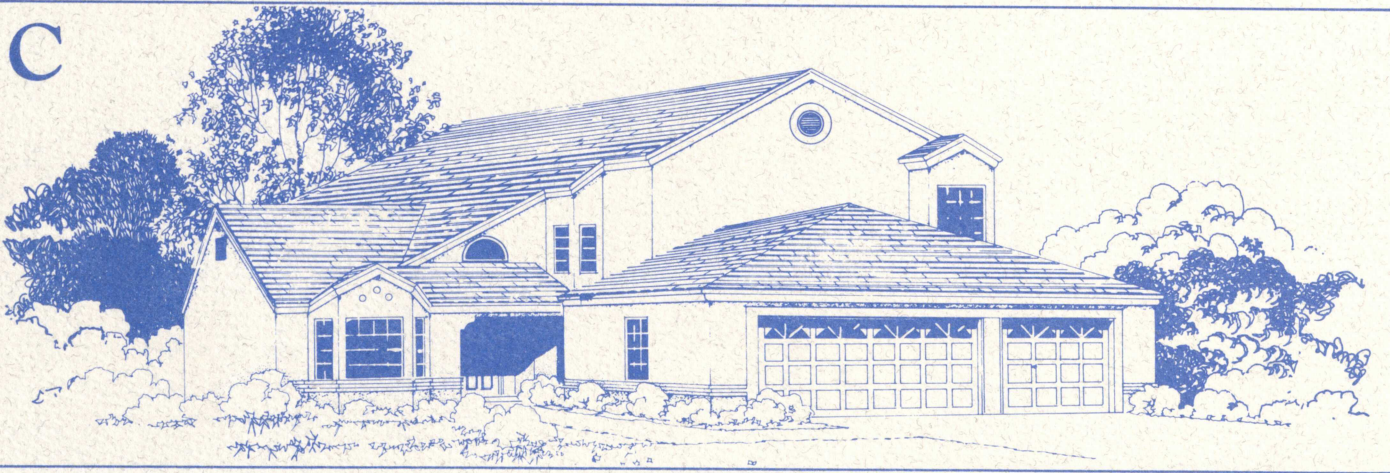
A



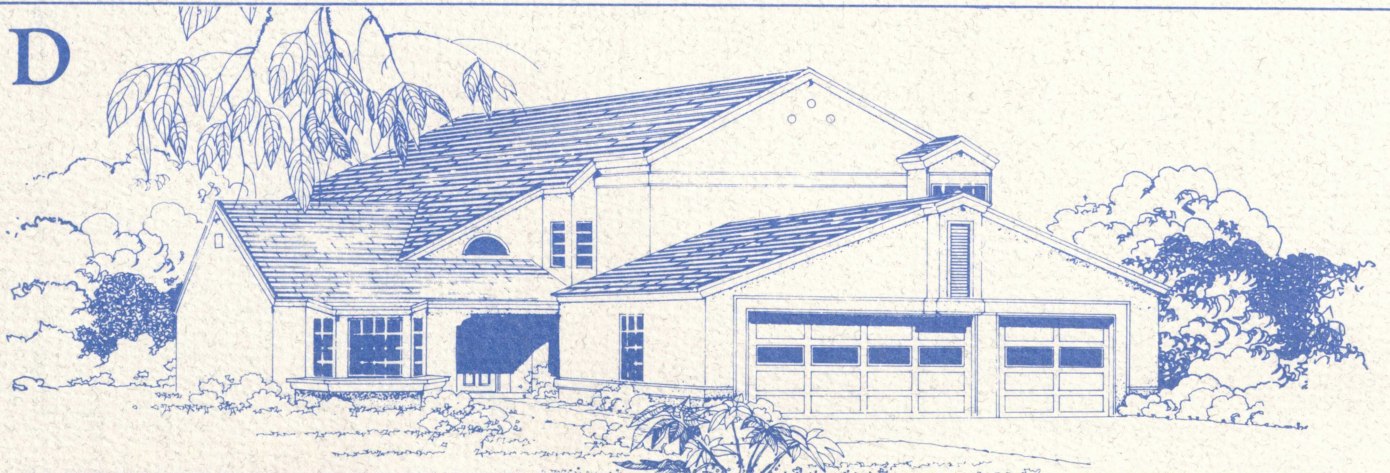
B



C

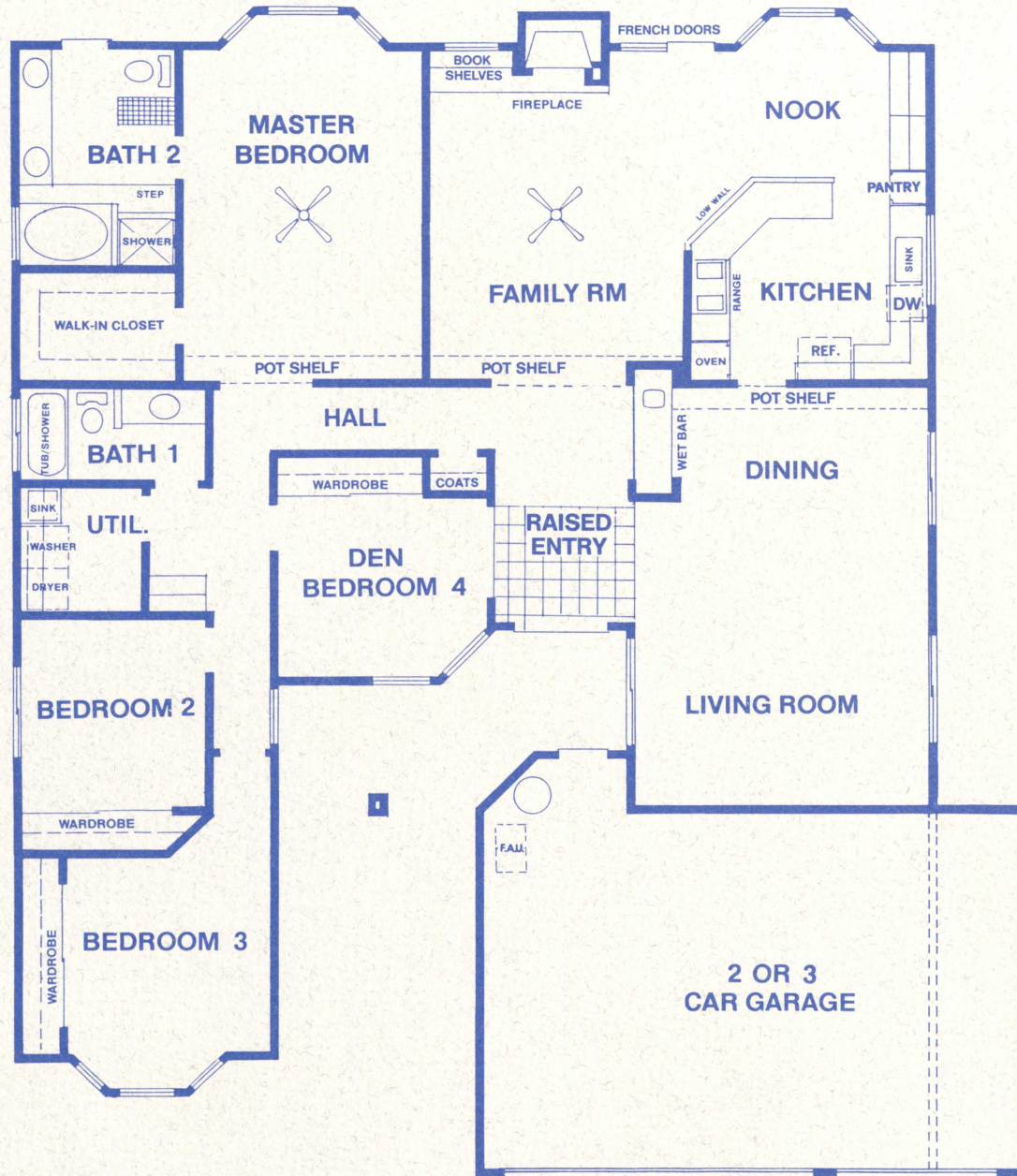


D



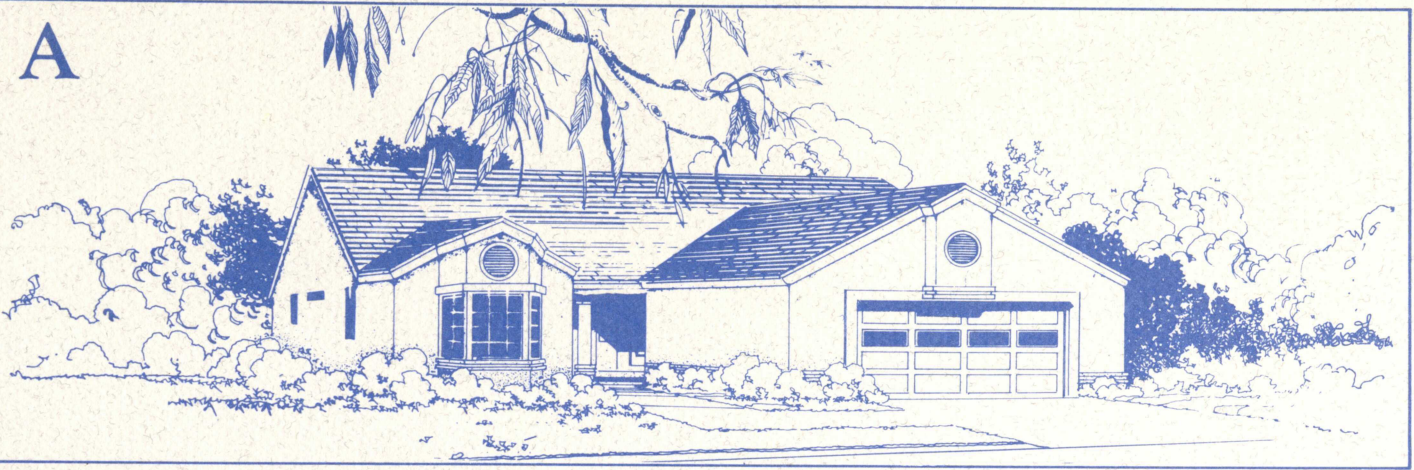
# BEACON POINT LAGOON

4 Bedroom / 2 Bath

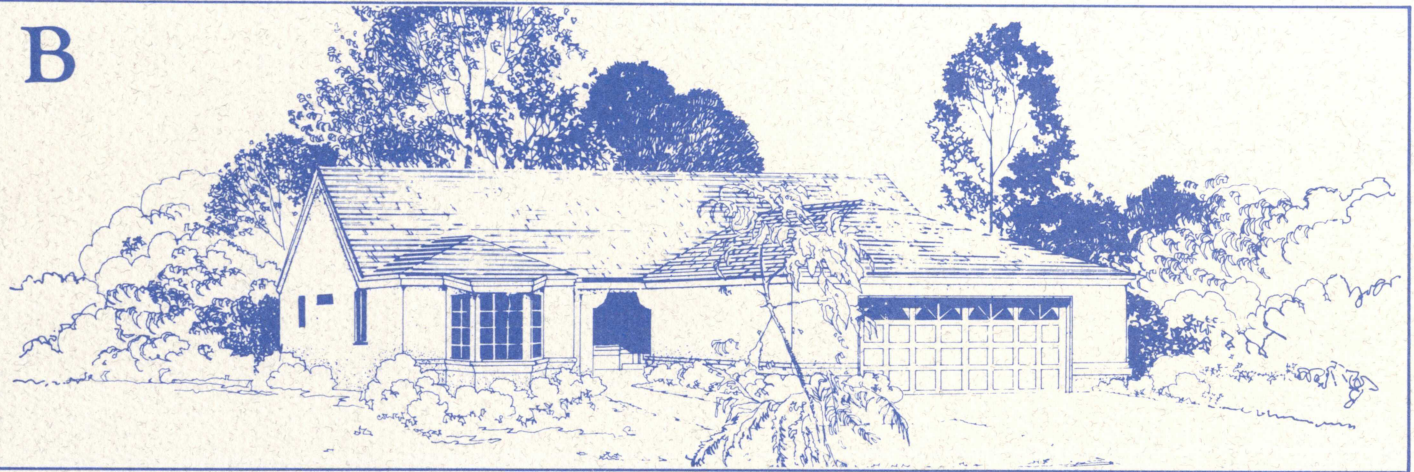


Due to fluctuation in market conditions and product availability, Chism Homes, Inc. reserve the right to modify or change plans, specifications, features or prices without prior notice or obligation. All drawings shown are artist's conceptions.

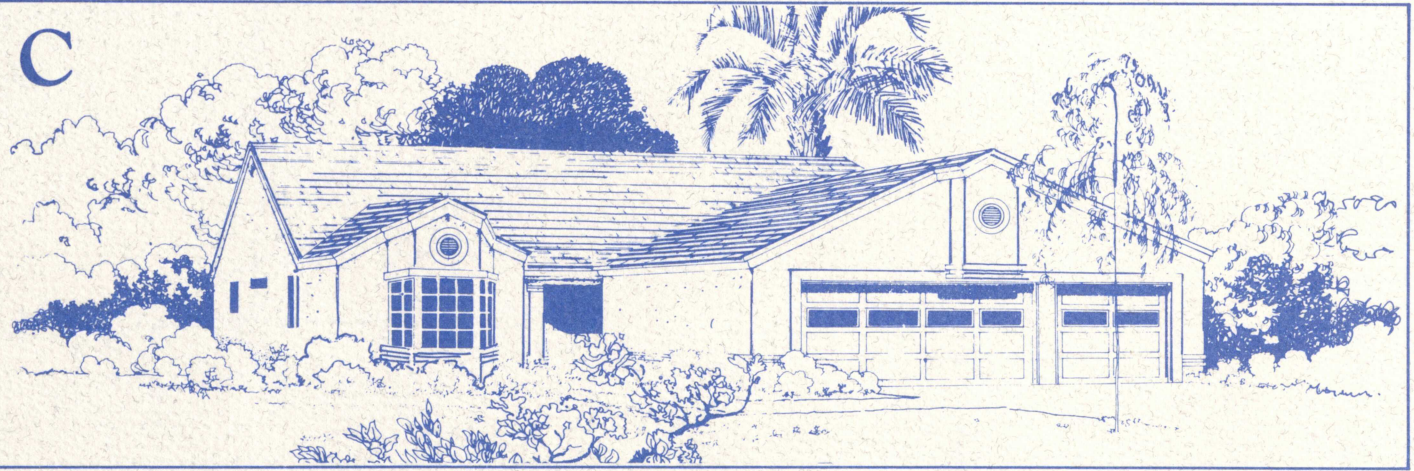
A



B



C



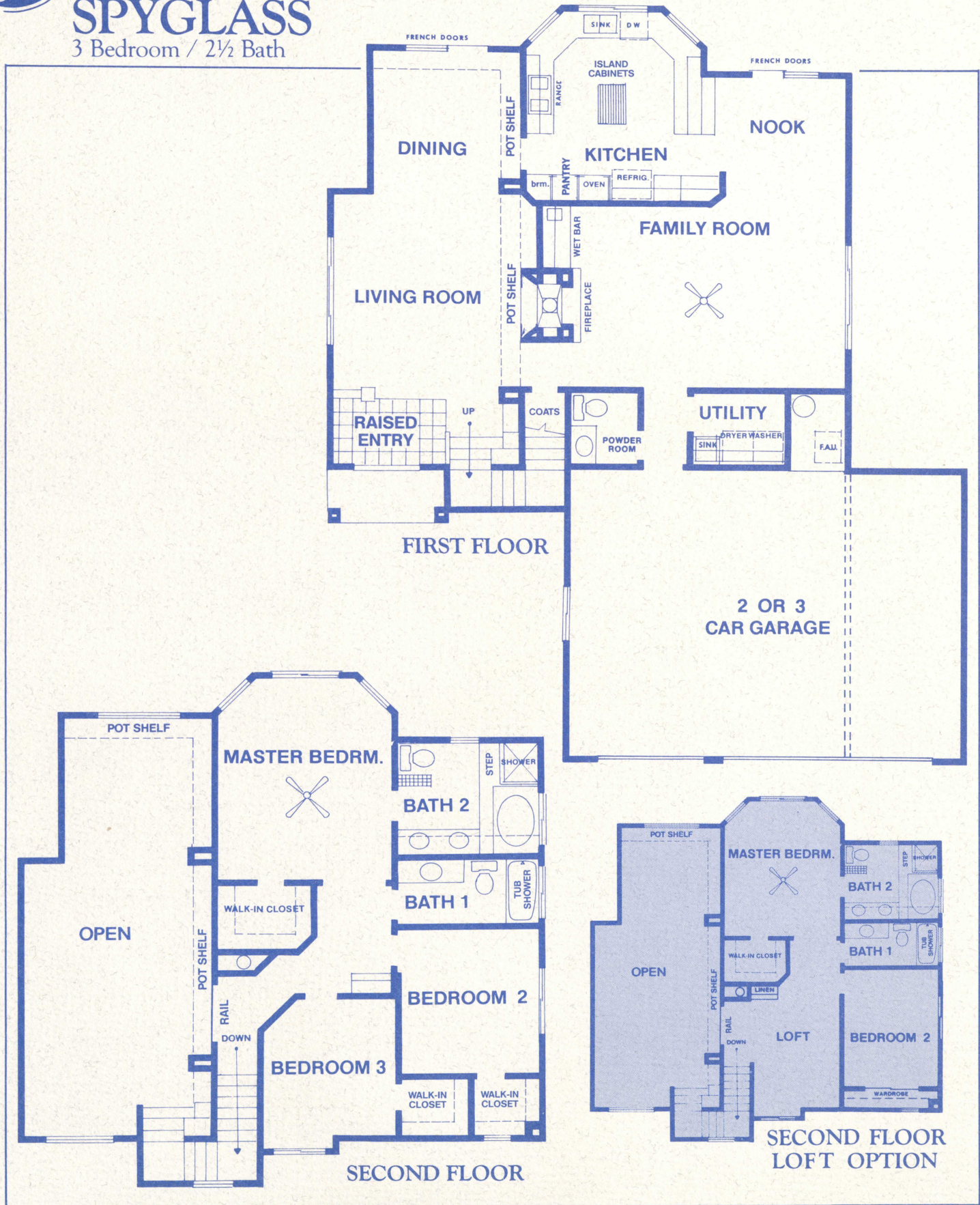
D



# BEACON POINT

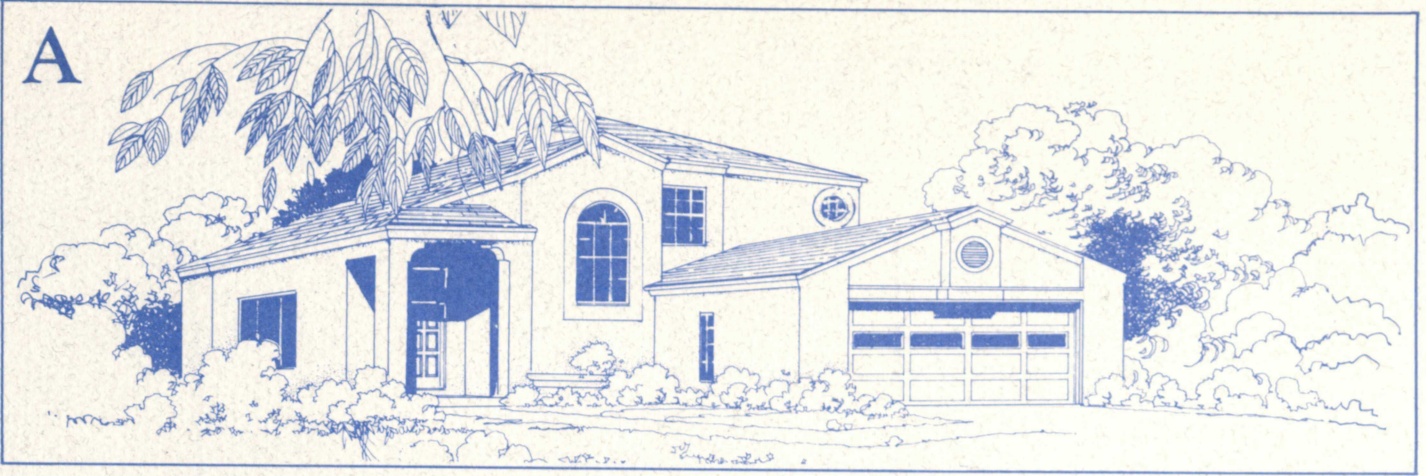
## SPYGLASS

3 Bedroom / 2½ Bath

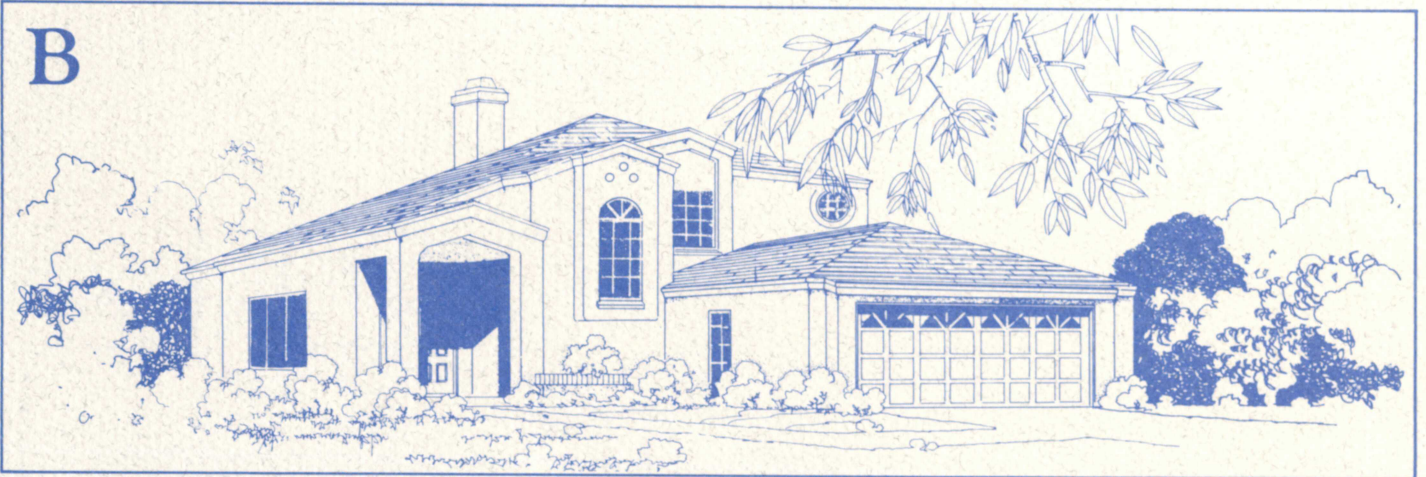


Due to fluctuation in market conditions and product availability, Chism Homes, Inc. reserve the right to modify or change plans, specifications, features or prices without prior notice or obligation. All drawings shown are artist's conceptions.

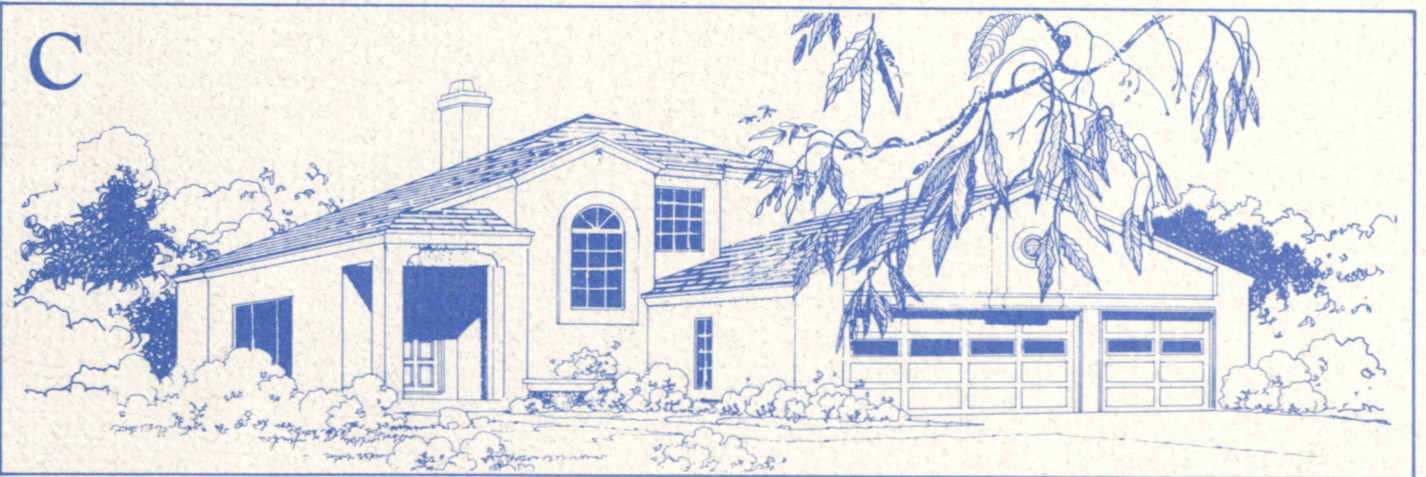
A



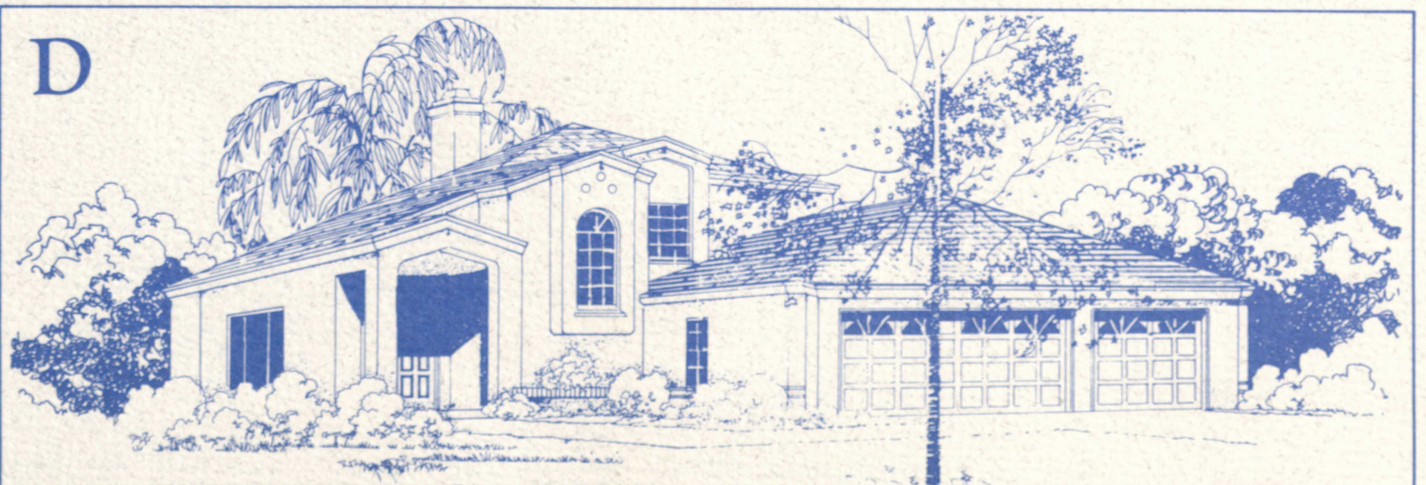
B



C



D

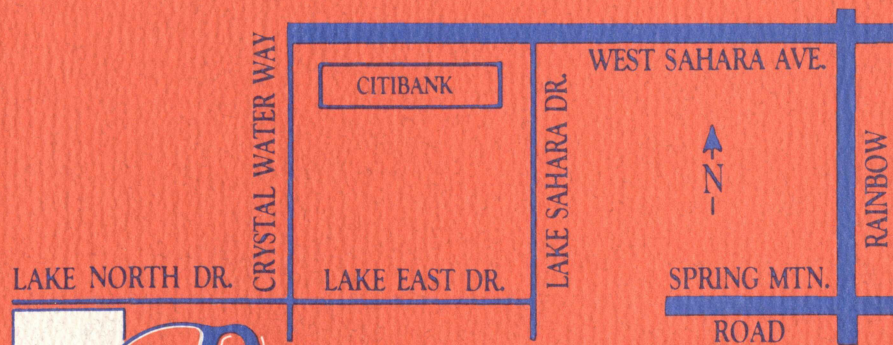




## THE CHISM STORY

**B**uilding quality homes for satisfied customers is the trademark of Chism Homes, Inc. The Chism management team consists of many highly trained individuals, with over 300 years of combined experience. This knowledge and experience is working for you with each and every home Chism builds.

Chism Homes, Inc., is constantly keeping up to date with the finest building products and techniques. With its expertise and a long history of home building, Chism Homes, Inc., has tackled some of the toughest environments possible with great success. Chism Homes, Inc., has land development and homebuilding operations throughout the southwest and inter-mountain states of Colorado, Wyoming, and Idaho, with its home office in Southern Nevada. It takes a strong team and highly motivated personnel to continually produce quality homes under a multitude of conditions. This is why over 25,000 people are enjoying the end results of Chism craftsmanship and attention to detail. Customer satisfaction is the most important factor for Chism Homes, Inc., and that satisfaction is present in the home we build for you.



 **BEACON POINT**  
Sales Office: (702) 363-5500

Corporate Office:  
CHISM HOMES, INC. 4535 West Sahara Avenue, Las Vegas, Nevada 89102 (702) 873-4940