

Searches

(Continued from Page 1)

in the statistics because there were so few of them.

Kelly also pointed to comment cards that have been handed out to every international traveler who is detained by U.S. customs since March 1999.

Through December, 82 percent of the 8,234 that were returned indicated a positive experience, he said.

Durbin complimented Customs' efforts.

Still, he plans to offer legislation to would put into law many of the reforms, such as prohibiting racial profiling of passengers, sensitivity training for inspectors, requiring annual statistics on the race and sex of everybody searched and mandating that officials document why someone is searched.

Diversity

(Continued from Page 4)

General Electric, GTE, IBM, Intel, Lucent Technologies, MCI Worldcom, Siemens Corporation, Sun Microsystems, TRW, United Technologies Corporation and Xerox.

Both men said they did not believe that panic among white males would be a major issue for women and minorities, as long as companies maintain efforts to encourage understanding of diversity.

"Do we look panicked?" Fisher said. "The biggest education job is to make people recognize this is not a zero sum game."

The companies involved are Adobe Systems, America Online, American Express, Anderson Consulting, AT&T, BP Amoco, BellSouth, Boeing, Chevron, Consolidated Edison, DuPont, Eastman Kodak, Exxon, Ford Motor Co.,

General Electric, GTE, IBM, Intel, Lucent Technologies, MCI Worldcom, Siemens Corporation, Sun Microsystems, TRW, United Technologies Corporation and Xerox.

"We believe that consumers judge corporations not only by their bottom line, but by the content of their character," Ackerman said. "Change is a constant for all of us, and only the companies that remain flexible will survive."

Thursday's session is the third Clinton has held focusing on diversity and racial reconciliation in particular segments of society.

Last July, the country's leading bar associations pledged to increase pro bono service on cases involving racial justice.

Last month, various religious faiths agreed to teach that racism is a sin and to take steps within their denominations to encourage racial tolerance.

Survey: More sickness in cities

ATLANTA (AP) — City dwellers get sick more often than their rural counterparts. People who live in areas of high unemployment are more likely to feel unhealthy. And people living in poverty are sick most often. Those trends were drawn from a five-year study released last Thursday by the Centers for Disease Control and Prevention.

The government asked adults how many days in the prior month they were unhealthy and compiled results from 1993 through 1997. Those numbers were compared to factors such as population, income levels and unemployment rates. The study supports earlier research showing that residents in some pockets of extremely high unemployment reported feeling unhealthy up to 20 days a month.

"People that say they are unable to work have extremely high levels of unhealthy days," said David Moriarty, spokesman for the CDC's National Center for Chronic Disease Prevention and Health Promotion. "We really don't know if people are not feeling well because they are

unemployed, or they're without a job because they may not have resources to have health insurance."

For the general population, the average number of unhealthy days a month is 5.3.

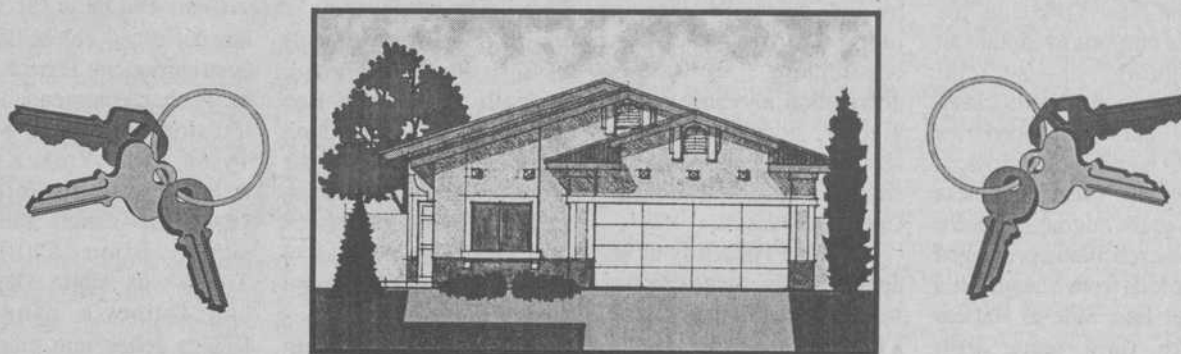
People living in counties with more than a million residents were unhealthy almost 5.6 days a month, while those who live in counties with between a half-million and a million people felt bad 5.1 days a month.

However, people who lived in the least populous areas — fewer than 25,000 residents — were almost as sick as their urban counterparts, with 5.4 unhealthy days a month.

Moriarty said the study is a first step to help local officials identify problems that lead to high illness rates in their communities.

Mary Martin, public health manager for the Columbia-Boone County Health Department in Columbia, Mo., agreed. "You have to know where you are to be able to know where you want to go," she said.

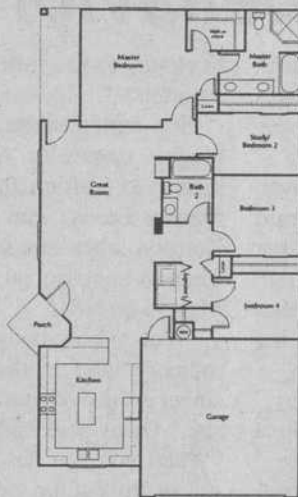
WHISPERING TIMBERS YOUR KEY TO INDEPENDENCE



starting from \$96,990

COME VISIT US TODAY! CALL (702) 647-1114

"The Luxury of Affordability"



COMMUNITY FEATURES

- PRIVATE, GATED ENTRANCE
- 1.2 ACRE COMMUNITY PARK
- JOGGING/WALKING TRAIL W/PERIODIC EXERCISE POINTS
- MATURE PINE TREES THROUGHOUT
- FAMILY RECREATION FACILITIES
- PAVILION AND BARBEQUES
- PRIVATE STREETS WITH GAS COACH LIGHTS
- HOMEOWNERS ASSOCIATION TO ENSURE QUALITY OF NEIGHBORHOOD

INCLUDED IN YOUR NEW HOME

- Washer/Dryer
- Refrigerator
- Dishwasher
- Range
- Dual-Pane Windows
- Oak Cabinetry
- Custom Lighting in Kitchen
- Vertical Blinds
- 9 or 10 Foot Ceilings
- French Doors (per plan)
- Patio (per plan)
- Porches (per plan)

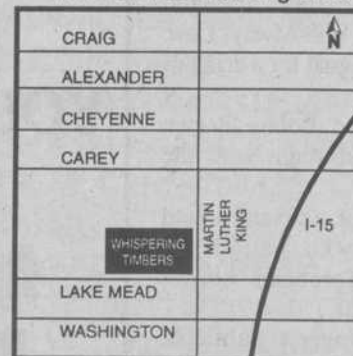
VISIT WHISPERING TIMBERS TODAY AND YOU MAY WIN A NEW TV!

Bring this card in and fill out a free credit application when you visit Whispering Timbers, and you'll be entered into our drawing for a 25" color TV.

Name: _____
Address: _____
City/State/Zip: _____
Day Phone: _____

No purchase necessary. Offer expires April 30, 2000.

On the northwest corner of Lake Mead and Martin Luther King Blvd.



OPEN 7 DAYS A WEEK • 10 AM - 6 PM
702-647-1114