

“  
If they snatch her out,  
we will put her back in.”

” — Curtis Briley,  
West Las Vegas Executive Board



Rev. Jesse Scott spokesman for the Citizens United For Equity For Commissioner Yvonne Atkinson Gates stresses the unfair reporting against the commissioner during the press conference held at the West Las Vegas Library Theatre on Wednesday. Sentinel-Voice photo by Ramon Savoy

## Group asks for fairness

By John Stephens III  
Sentinel-Voice

More than 100 business owners, civic and religious leaders and empowerment groups joined citizens Wednesday blasting the media for crucifying Clark County Commission Chairwoman Yvonne Atkinson Gates for alleged ethics violations.

Atkinson Gates' Ethics Commission hearing today will probe whether or not the commissioner gave true testimony to the commission last year about her involvement in a frozen daiquiri venture she and neighbor Ed Nigro were pursuing.

Supporters at the West Las Vegas Theater meeting were vocal.

“They are not going to ostercize this sister,” said Curtis Briley of the West Las Vegas Executive Board. “If they snatch her out, we will put her back in.”

Said the Rev. Jesse Scott, moderator of the press conference and spokesman for Citizens United For Equity for Commissioner Yvonne Atkinson Gates, “This is no play business.”

The rally, featuring a litany of African American politicians, former

(See Gates, Page 14)

## Council piecing together welfare-to-work puzzle

By Yvette Zmalia  
Sentinel-Voice

A group charged with allocating Southern Nevada's \$5 million share of federal welfare-to-work funds rapped with citizens and employment specialists two weeks ago to glean ideas and tab a leader to helm the welfare-to-work ship.

During the Jan. 7 meeting at Cashman Field, the Southern Nevada Private Industry Council also erected a time line for their recommendations which must be submitted before the federal reporting deadline in February.

State human resources staff, welfare division personnel and regional officials from the Department of Labor-Employment, Training, and Rehabilitation administrators told the council the key to implementing a successful welfare-to-work program depends on collaborative efforts between federal, state, and local agencies.

Welfare-to-work guidelines earmark funds for “hard-to-service” clients.” Through the program, these clients must be made to qualify within

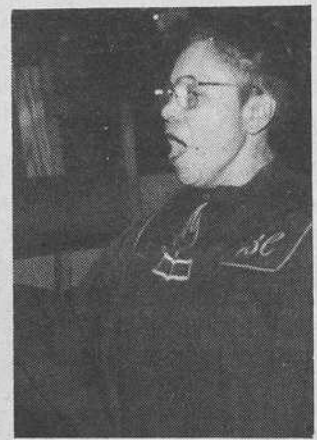
(See Council, Page 14)



## Still the King

A lady props up a painting of Martin Luther King Jr. during a downtown parade for the slain civil rights leader. (Below) A choir member from Second Baptist Church sings during a gospel night, part of a week-long tribute during the 17th annual King celebration in Las Vegas.

Sentinel-Voice photos by John Broussard



## New facility caters to would-be entrepreneurs

By John Stephens III  
Sentinel-Voice

Aspiring entrepreneurs now have a place to test-market their business before jumping feet first into the world of proprietorship.

The City of Las Vegas' Neighborhood Services Department opened the new Las Vegas Business Center and Small Business Incubator Friday. The \$2 million structure, which sits on 1-1/2 acres at Lake Mead Blvd. and Martin Luther King Blvd. features eight industrial/warehouse offices and units slated to house 10 incubators for budding entrepreneurs to gain business acumen.

An incubator provides space, on-site management, business planning and financial services for the most critical period for establishing a successful business — the first two years.

The 17,100-square-foot small business incubator was financed with federal Housing and Urban Development Community Development Block Grants and Department of Commerce Economic Develop-



Officials, left to right, Larry Brown, Las Vegas City Councilman, Yvonne Atkinson Gates, Clark County Commissioner, Michael McDonald and Gary Reese, councilmen and Commissioner Mary Kincaid, present a \$400,000 check to the new Las Vegas Business Center during the grand opening ceremony Friday.

Sentinel-Voice photo by Ramon Savoy

ment Administration funds.

Clark County Commission Chairwoman Yvonne Atkinson Gates called the project “long overdue.” “This is something that is going to benefit the community and help businesses and jobs.”

The facility is located in the Las

Vegas' Enterprise community — a federally designated area earmarked for improvement funds. In December 1994 President Clinton declared nine census tracts in urban areas throughout the valley part of the Enterprise Community, thus slating those areas

(See Center, Page 4)