

EBONY ETCHINGS

(Continued from Page 12)

a party animal himself.

His mailman Pete plays by Lavan Davis, is also a friend who reads all his mail before he gives it to him. And openly discusses the contents of all correspondence and reminds him to pay his over due bills. Even though he's a married man with his own problems at home, he's always making passes at Tyree's landlady Mr. Rudolph, a nosy pop-in anytime bible totin' god fearing gospel singing matron, who tries to get Tyree to pay his rent and stop having women running in and out of the apartment while Doreen is at work.

Eventually Doreen catches Tyree red handed with another woman in their apartment, and the rules of the game suddenly change. It's been stated time and time again, "love can be a dangerous game." And the songsational stage production of "What Goes Around... Comes Around" paints the picture very well!!

The current tour schedule of "What Goes Around... Comes Around" for the month of February is as follows: February 8th - the Tivoli Theatre in Chattanooga, Tennessee, February 19th - the Tyree Arts Theatre in Columbus, Georgia, February 28th through March

5th - the State Theatre in Cleveland, Ohio. After Cleveland "What Goes Around... Comes Around" will play the following schedule: March 8th-12th, the Midland Theatre in Kansas City Missouri, March 14th - 19th, the Strand Theatre in Boston, Massachusetts, March 28th through May 7th the Beacon Theatre in New York City, May 9th - 14th, Symphony Hall in Newark, New Jersey, followed by a playdate at the landmark Fox Theatre in St. Louis, Missouri, May 16th-21st, before taking off for a summervacation. Added playdates will be announced as confirmed.

The national tour of "What Goes Around... Comes Around" is being handled by Al Wash of ALW Entertainment out of Dallas, Texas, in association with Rickie Walker & Associates headquartered in Atlanta, Georgia.

Curtain time for all nightly performances of this entertainment stage play is 8:00 p.m. sharp, and 3:00 p.m. for all weekend matinee performances. Tickets for "What Goes Around... Comes Around" performances can be obtained by calling the box office of the venues in the cities listed, or the leading ticket agencies servicing each respective area...and that's Hollywood this time!!

Until the next time, Lanier.

AFRICAN-AMERICAN HISTORY
THOMAS FULLER
(The African Calculator)

By Gwen Walker

A mathematical genius, born in Africa, and held a slave in Alexandria, Virginia, Thomas Fuller could neither read nor write, but he could figure sums involving billions in his head better than 99 out of 100 clever men could do with a pencil.

He could rapidly give the diameter



GWEN WALKER

of the earth's orbit in inches despite interruptions. In a test to give the number of seconds in 70 years, odd months and days, Fuller did it in 90 seconds, beating an educated white man with a pencil. The latter had forgotten the leap years. With education, Fuller might have been another Newton. He died December 29, 1790 at age 80.



POETRY CONTEST

Pickenpaugh Literary Agency is holding a free contest entitled "Voices." Looking for new and old writers, published or not. There are prizes with this contest. Poets may enter one to three entries, 30 lines or less, any subject, any style.

Send entries with self-addressed stamped envelope to: Poetry, P.O. Box 2895-L50, Vacaville, California 95696. Deadline is March 31, 1995.

POET'S CORNER

My Enemy (Yesterday, Today And Tomorrow)

By Keith A. Brantley (Izulu Poets)

Yesterday,
I sat down with my enemy.
We dined and discussed;
We shared no trust.
Tomorrow,
cordiality is dead.
Today,
I have civil skins to shed.

The Westside Story

By Keith A. Brantley (Izulu Poets)

The quintessential analytic,
the westside critic
who has placed himself above
urban pains and ghetto love.

He is the artist, frustrated
though his demeanor is sedated,
there is a fire in the calm.
He is the mist over the balm
rubbed over our sore spots.
He dines where the poor stops
but never partakes.
His mouth is open
but selectively repeats.

He is out and about, us
within and without...us
and critically uninvolved.

YOU ASKED FOR IT!

BRAND NEW 1995 BUICK

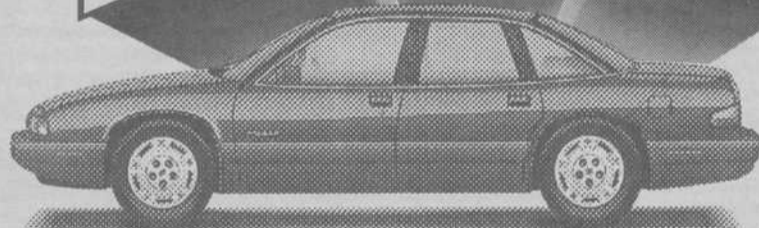
REGAL

BEST BUICK DEALS IN TOWN!

BRAND NEW 1995 BUICK

LESABRE

\$2699
PER MONTH



INCLUDES:
• DUAL AIRBAGS
• ANTILOCK BRAKES

\$2999
PER MONTH



DESERT MAKES IT EASY! CALL TOLL FREE: 1-800-522-2850 FOR YOUR PRE-APPROVED LOAN OR LEASE TODAY!

Desert **BUICK**

"NO GIMMICKS...NO HASSLES...JUST GREAT DEALS!"
6400 W. SAHARA • 253-6400

48 month lease, cap reduction/ref. sec. dep./first pymt. (excl. tax)/total at start/total pymts./ purchase option. REGAL: \$3500/\$250/\$269/\$4039/\$12.945/\$7103; LESABRE: \$4800/\$250/\$299/\$5371/\$14,386/\$7769. 10c per mile over 15,000 miles per year. Plus excess wear and tear, state fees, tax, tag, due at inception with approved credit. Prices include everything except tax, title & MV fees.

