

AFRICAN-AMERICAN HISTORY
MRS. ESEL BELL
(First African-American Postmaster at Prairie View, TX)

By Gwen Walker

Mrs. Esel Bell, my new found cousin and cousin to the late T. Bone Walke, became the first African-American postmaster at Prairie View, Texas in 1982. On July 17, 1992 Mrs. Bell was honored by the City of Prairie View by renaming the Prairie View Post Office the Esel Bell U.S.



GWEN WALKER

Esel is a 1949 graduate of Prairie View A&M University. A year later she was employed by the university's post office; a job she held until 1989. The only other known living African-American person to have a post office named after them is former U.S.

Congresswoman Barbara Jordan in Houston, Texas. Such an honor is usually bestowed to someone who is dead.

The person most responsible for the City of Prairie View getting a post office is the late U.S. Congresswoman Mickey Leland. Congressman Greg Laughlin, 14th District Texas, authorized Bill HR4771 to honor Mrs. Bell.

President Bush signed the bill October 23, 1992 to rename the Prairie View Post Office after Esel Bell.

Mrs. Bell received many proclamations from the City of Prairie View as well as official presidential recognition. Mrs. Bell has forwarded me copies of all the numerous newspaper articles, proclamations, white house transmittals to be displayed in the forthcoming Walker African-American Museum and Research Center here in West Las Vegas.

Congratulations to Mrs. Esel Bell and family.



ESEL BELL

POET'S CORNER

The Flight

By Gwen Walker (copyright pending)

Clear blue skies
 on a bright shining day
 makes it clear for take off

To a land of false hopes
 and dreams of what
 one hopes it could be.

Yet the return flight points
 to a destiny that's really
 meant to be
 one right before your eyes
 that was once in your grasp.

"Paretha" the arrow from cupid
 hand controls the heart
 in a fools paradise

Just as butterflies are free
 let him go. If they return to
 stay in the proper way, then
 it's really yours, if it's not proper,
 then it wasn't meant to be.

Justice?

By Kathy Negron, Las Vegas Sentinel-Voice

Trying to live your life by the book,
 But when you walk in you always get that second look.
 Just another 'Nigga' or 'Spick' they say,
 Hell they're all the same and will never live our way.
 Trying to prosper but always beaten to the ground,
 Deep down knowing that JUSTICE won't be found.
 Keeping the FAITH and not second guessing the situation,
 In the end a beautiful and colorful creation.

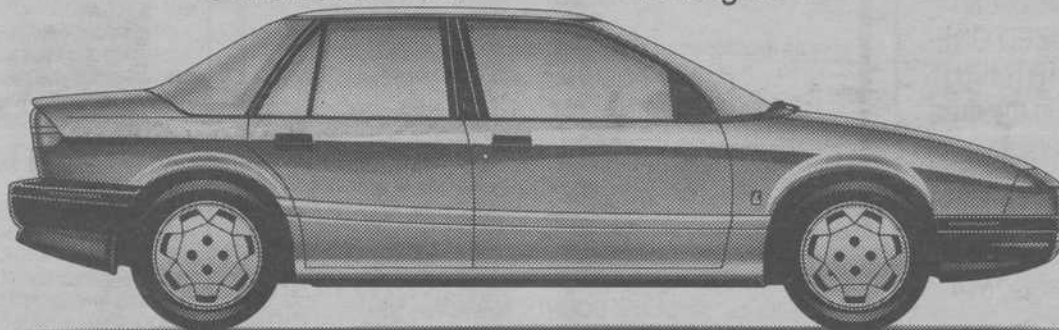
Brotha White - Right?

By Natalie D. Lambert, Sista' Girlfriend, Inc.

I'm the kind of girl —
 you SHOULD take home
 to meet Mother —
 the mind that you'll discover
 has good old-fashioned values —
 can relate to you — when in public
 will not make people stare at you —
 not the white man's reject — not flashy
 or loud — I'm one who will make you proud.
 I'm the kind of girl —
 who is not phony or fake
 the kind that gets into your system
 and you'll never be able to shake
 so sweet, I'm made of honey —
 not after your money....
 I'm a Home/Girl - Lady - and a Woman
 considered a Good omen.
 BE BLACK with me a moment
 my brotha — Mr. Mister —
 NOTHING on this earth compares to a SISTER!
 Sho' I'm right — this ain't hype.
 I don't mix cream in my coffee —
 I'm all BLACK — you see.
 Full of love and charm
 not blue-eyed and dyed blond
 I'm the one who SHOULD be
 locked onto your arm —
 you want integration — when there's still
 segregation in this nation.
 Get BLACK again brotha, if you can —
 I'll laugh with you — not AT you.
 To your Own Self be True.
 My brotha — Mr. White Girl Mister —
 You disgrace the Sister?

**Who's ranked behind
 Infiniti and Lexus?***

- | | |
|------------------|-------------|
| 1. Lexus | 6. Toyota |
| 2. Infiniti | 7. Audi |
| 3. SATURN | 8. Cadillac |
| 4. Acura | 9. Honda |
| 5. Mercedes-Benz | 10. Jaguar |

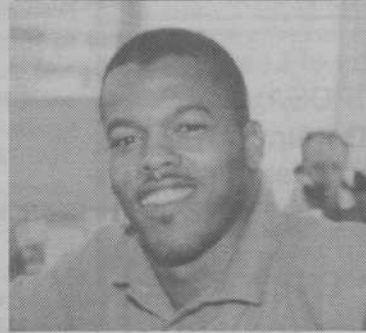


NOT JUST A CAR, IT'S A SATURN.

*J.D. Powers customer satisfaction poll.



EDDIE PLUMMER



HENRY "Hen Hen" THORNS



FRED SCHNEIDER



HARVEY McCOY



SATURN

#1 in the nation...

Saturn of West Sahara

5325 W. Sahara • 252-8900

