

Church

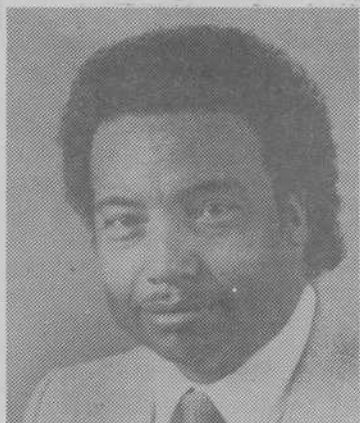
St. James Catholic Church Revival to Feature Father James Goode

"We've Come This Far By Faith" is the theme for the annual revival at St. James Catholic Church at the Corner of "H" and Morgan to be held February 9-12 at 7:00 p.m. nightly. The mission revival this year will be led by Father James Goode, OFM, Ph.D of San Francisco, California. He comes to Las Vegas with past pastoral assignments in Brooklyn, New York and San Francisco, California. He has been active with many prayer groups, the Anaheim Religious Education Congress in addition to his community and civil rights activities.

The Parish of St. James cordially invites you to come and be filled with the power of the Spirit. The mission-revival promises to be an uplifting and prayerful

experience. You may call St. James' Rectory at 648-6606 if you have any questions: the dates to remember are February 9-12 at 7:00 p.m. Please join us in worship.

Morris Chapman



Live In Concert

Friday Night
Feb. 6, 7:30 PM



800 N. Rancho Dr.
Rancho & Expressway
399 Dove

Worship Services: Sun. 9AM
11AM
2PM
4:30PM
7PM
Wed. 7PM
7:30PM
Fri. Concerts 7:30PM
Sat. Movies 7:30PM

CCCC Planetarium to Premiere "The Magic Egg"

Dr. Dale Etheridge, Director of the Clark County Community College Planetarium will hold a press conference Saturday, January 31, 1987 at 6:15 p.m., proceeding the premiere of the hemispheric motion picture, "the Magic Egg". At this time a preview of this innovative projection system will be presented to the press.

The College recently received financial contributions from the Cities of North Las Vegas and Las Vegas and Clark County, which allowed it to purchase the Cinema-360 projector. The Cinema-360 system is the 35mm counterpart to the 70mm projection system contained in the Caesars Palace's Omnimax theater.

For further information, please call the Clark County Community College Planetarium at 643-6060, ext 308.

BA HA'I

877-0377

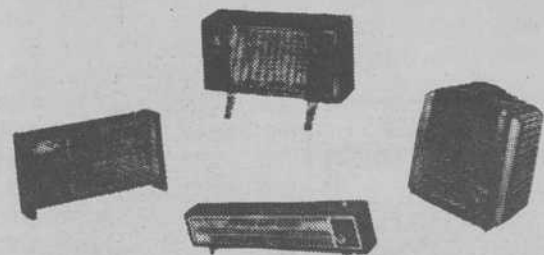
SUPPORT
OUR
ADVERTISERS

HEATERS



ARVIN - MARKEL - TITAN - SUPERELECTRIC

At Phil's you will find the largest selection in Las Vegas of Automatic 110-220 Volt Wall and Portable Heaters, plus, Gas Furnaces, Kerosene, Oil and Diesel Fuel Heaters.



PHIL'S SALVAGE, INC.
BUILDER'S EMPORIUM
1131 So. Main Street
382-7528 382-5004
Mon. - Fri. 8:00 a.m. to 5:00 p.m.
Sat. 8:00 a.m. to 4:00 p.m.

"Practical Parenting" Series to be Previewed

Educators and civic leaders will have an opportunity to preview the recently-produced video series entitled "Practical Parenting" at a cinema-styled reception Thursday, January 29, 7 p.m., at the studios of Channel 10.

For the occasion, and to evoke the mood of a film premiere, the studios of Channel 10 have been made to resemble a movie theatre, to the last detail, including a refreshment stand complete with hot buttered popcorn.

The series, which features four half-hour segments, was produced by the Clark County School District in

cooperation with UNLV. It was developed by Dr. Bill Wagonseller, professor at UNLV and an expert on parenting skills, and produced by Paul Terry of Channel 10. Billie Shank was research consultant for the project.

Segment titles are: "So You're Going to be a Parent," "School Days," "The Art of Communication," and "Child Management." The series will air weekly on Channel 10 at 7:30 p.m. on the following respective dates, February 5, 12, 19 and 26.

All schools in Clark County

are invited to record these broadcasts, making them available to every parent group. Also, any interested agency in Clark County (governmental, private business, or parochial school) may record the programs for their continuing use at no charge.

Single copies of the user's guide will be available and can be duplicated without limitation within Clark County.

CHURCH ANNOUNCEMENTS

Churches are urged to send their services and program announcements, typewritten, to the Las Vegas Sentinel-Voice Church Reporter, Mary Wilson, at 1201 South Eastern Avenue, Las Vegas, NV 89104. Articles must be mailed or delivered to the above location no later than Monday noon of each week.

We Can't Spell S CCESS Without U

D Lee Productions presents In Concert



Mr. Wallace ("Wallie") Broadnax

and Friends
Featuring

Cheryl Coleman Linda Moore Angela Broadnax
Antoine Roberson Sandra Peoples T.R. & Co.

New Bethel Baptist Church
400 West Adams
Sunday, February 8, 1987
4:00 p.m.

You have seen Wallace Broadnax as a director and a musician.
Now come and hear him as a singer.
Partial proceeds will go to benefit the Gospel Programming at KCEP Radio.