

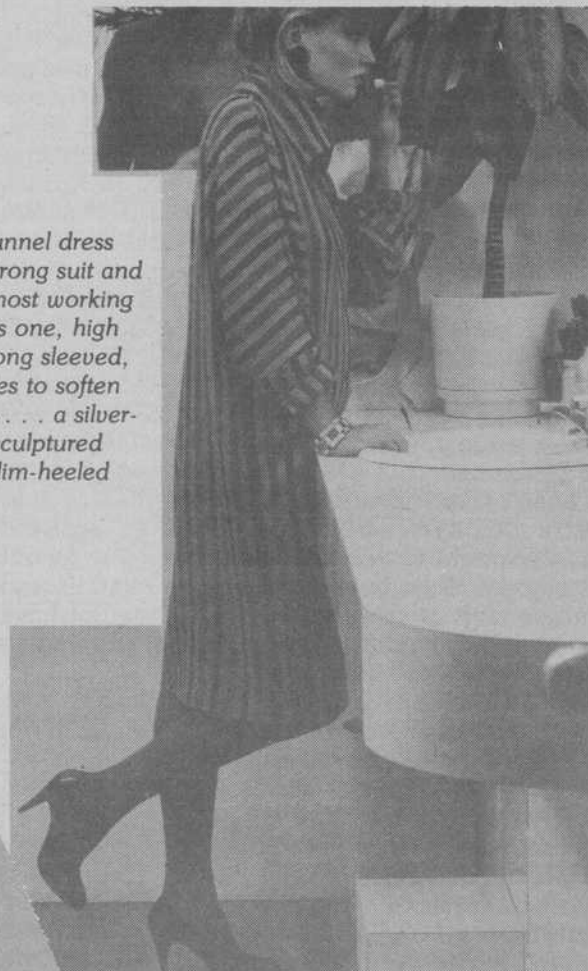
Fashions

Gray is **THE** color this season!

DRESSING FOR WORK



A more casual, yet still appropriate look for work comes in this rugged country white "rag" sweater, which takes on a new feminine charm when paired with a longer matching knitted skirt. Accessorize it with a crisp white shirt and lower-heeled shoes.



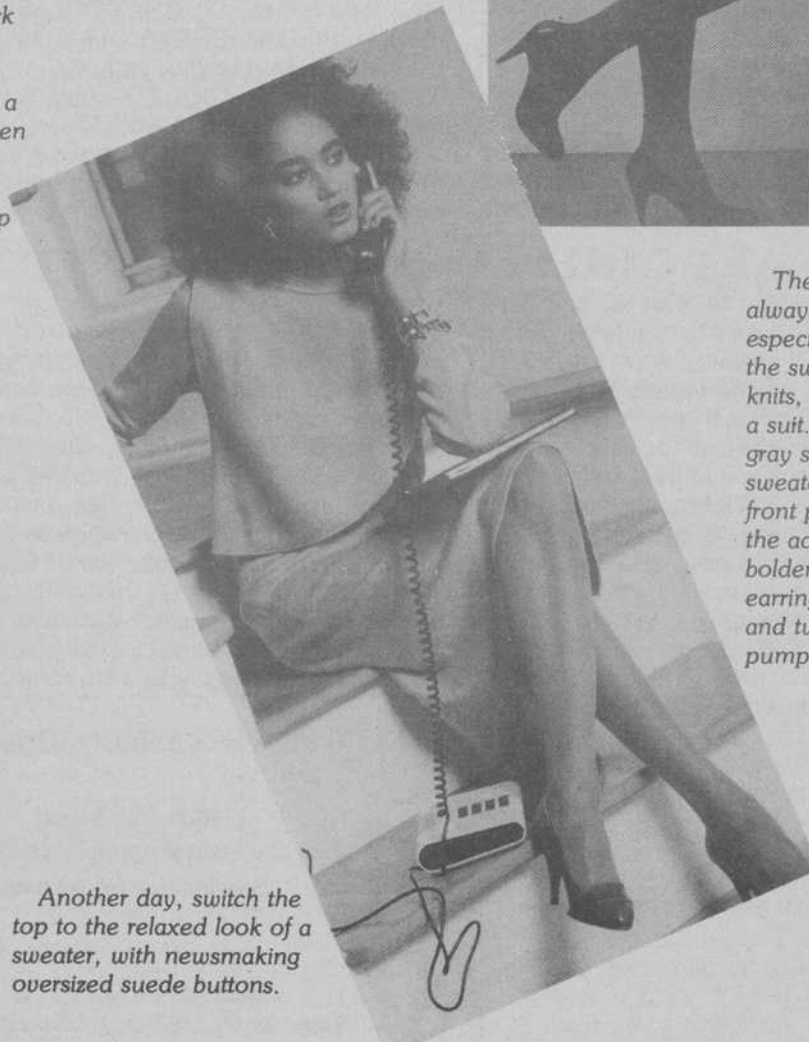
This gray flannel dress can be your strong suit and is enough in most working situations. This one, high collared and long sleeved, uses accessories to soften its bold stripes . . . a silver-link bracelet, sculptured earrings and slim-heeled red pumps.

You can always "play it safe" with the classic gray suit, which can lend itself to many variations, thus giving you multiple outfits with just a few simple changes in accessories.

Pair the jacket from your suit with a different slim skirt, which, while looking conservative and professional, still lends pattern and texture interest. Soften this menswear outfit with a pale silk shirt finished with a classic pin, classic pumps and your classic attache case.



Another day, switch the top to the relaxed look of a sweater, with newsmaking oversized suede buttons.



The woman in gray is always appropriate, especially when dressed in the sweater-easy new knits, tailored to work like a suit. Here, the outfit is a gray skirt and a gray sweater with a graceful front panel. For this outfit the accessories can be bolder, such as the larger earrings, big silver bracelets and two-toned high heeled pumps.