

**Ebony-Jet Support Carter**

Jet and Ebony magazine Friday, according to United Press, endorsed the re-election of President Carter — the first time the black-owned magazines have supported a presidential candidate since 1964.

We're for President Carter because he has broken new ground in the field of race relations," said John H. Johnson, publisher of the two magazines that have a readership estimated at more than 12 million.

Johnson, whose signed editorial will appear in the Oct. 30 edition of Jet, a newsweekly said the endorsement was made after the two magazines' editorial board met with Carter, Republican Ronald Reagan and independent John Anderson.

"We're for him because he has appointed more blacks to federal judgeships than all the other presidents combined," the editorial said. "We're for him because he has named more blacks to regulatory boards and commissions than any other president."

**Clark County Already Has A Justice Of The Peace With:**

- Integrity
- Dedication
- Experience
- Respect
- Concern
- Administrative Ability

**His Name Is Earle White**

**Let's Keep It That Way**

RETAIN



**Integrity . . . No Doubt About It**

Retain Judge White Committee, James E. Ordowski, Chairman

**Re-Elect**

**JOE NEAL**  
DEMOCRAT  
STATE SENATE



**Education:**

- Political Science, History, B.A., Post Graduate work in Law at Southern University Baton Rouge, L. A.
- Degree- Police Science, Institute of Applied Sciences - Chicago Ill.

**Leadership:**

- Past Chairman of the Economic Opportunity Board
- Chairman Greater Las Vegas Plan
- Chairman - Sarah Allen Economic Development Credit Union

**Legislative Experience:**

- Chairman- Committee of the Whole for the Special Session 1980, Both Senate and Assembly combined.
- Chairman - Senate Committee on Human Resources
- Vice Chairman - Interim Committee Library Services and Information
- Chairman Interim Committee on Teacher Education
- Member - Committee on Transportation
- Member Committee on Radioactive Waste
- Member - Special Legislative Committee on the MX Missile

**Military:**

U. S. Air force 1954 - 1958

**Married:**

Wife: Estelle,  
Children: Charisse, Tania, Withania, Dina and Joseph

**Endorsement:**

- Almost 4 to 1 of Democrats voting in September 9th Primary
- American Federation of Teachers
- Clark County Teachers Association
- Southern Nevada Homebuilders Association
- State AFL-CIO
- State Employees Association

**REMEMBER DEMOCRATS CAN VOTE FOR WOODROW WILSON TOO!**

If you are a Democrat you can split your vote and vote for WOODROW WILSON for Commissioner-District D. A vote for Woodrow Wilson is vote for all the people! Let's unite and vote for a man who cares WOODROW WILSON Commissioner District "D"

**PROGRESSIVE DEDICATED**

\*\*\* **Elect** \*\*\*

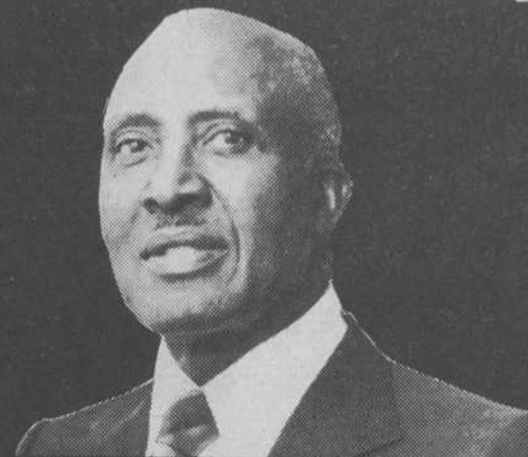


**JUNE WHITLEY**

University of Nevada  
BOARD OF REGENTS  
DISTRICT A

Pd. Pol. Adv.

**Woodrow Wilson**  
County Commissioner "D"



Supporters of Woodrow Wilson for County Commissioner

Gwyn Brown  
Campaign Manager

Dale Adams  
Yvonne Atkinson  
Raymond Blanks  
Judy Birley  
Cranford Crawford  
Dr. John Crear  
Rev. Willie Davis  
Leonard Foyte  
Ed Fike  
Jimmy Gaye  
Theron Goyns  
Oran Gragson  
Kenny Guinn  
Chic Hecht  
Cordova Hicks  
Jan Holt  
Bonnie Horning  
Fred Hyme, Jr.  
Johnnie Jefferson

Allan Johns, Esq.  
Larry Johns, Esq.  
Bonnie Juniell  
Barbara Kaufman  
Irwin Kaufman  
Rick Kuhlmeier  
Sarann Knight  
Bill Laub, Sr.  
Sylvia Leaks  
Matt Matthews  
Marge McCarthy  
Florida McDonald  
Wilson McGowan  
Charles McNeel  
Henry P. Miller  
Rudy Navarro  
Joe Neal  
Erma O'Neal  
Jimmy O. Porter, Esq.

Hugo Ramos  
Richard Reed  
Natalie Ruppert  
Ken Sawyer  
Charlene Sawyer  
Dave Shakespeare  
Dr. Lonnie Stinson  
Rudy Tacarante  
Jessie Thomas  
Jimmy Toler  
George Von Tubel  
Lee Walker  
Ben Wheeler  
Reed Whipple  
June Whitley  
Aaron Williams  
Rev. J. W. Wilson  
Peggy Wutke  
John Yoxen

511 E. BONANZA, LAS VEGAS, NEVADA 89101  
384-3444