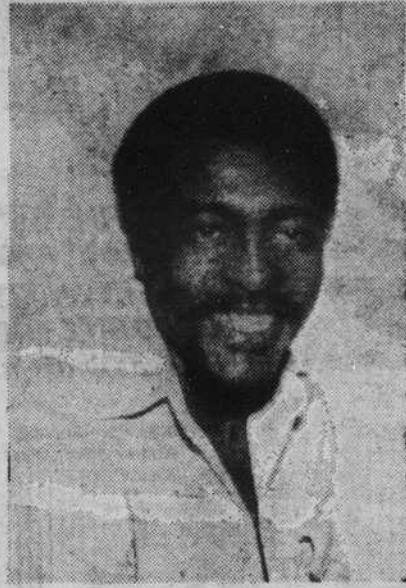


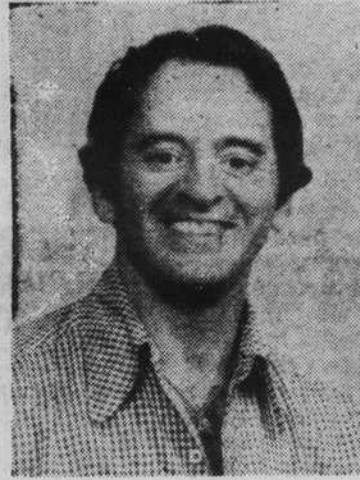
# CANDIDATES RUNNING FOR OFFICIAL OFFICE



Secretary-Treasur Culinary Union  
John Stewart page 3 col. 1



District Judge Dept. 4  
Gary White page 3 col. 1



Secretary-Treasur Culinary Union  
Benny Caldaro page 3 col. 2



City Attorney  
Harland C. Hubbard page 3 col. 3

**LAS VEGAS**

VOLUME 14 NUMBER 26  
FRIDAY, APRIL 15, 1977

**VOICE**

NEVADA'S BLACK  
COMMUNITY  
WEEKLY  
NEWSPAPER

## WESTSIDE COMMUNITY VIEWED BY THE BANKERS OF AMERICA: GREAT POTENTIAL SEEN

### INSIDE THE VOICE

- Publisher's Notebook  
Page 2
- Just the Facts  
Page 2
- Business in the Black  
Page 2
- Hughes Reports  
Page 4
- Education is Power  
Page 4
- Benjamin Hook  
Page 7
- Church Page  
Page 10
- Ruby Says  
Page 14
- Classified & Legals  
Page 15

SHERLENE PHILLIPS

On Thursday April 7, 1977, a number of the city and nation's most prominent bankers gathered at Clark County Community College to present their views and ideas on the development Las Vegas Valley.

The conference/workshops began with a tour originating at the Moulin Rouge Hotel continuing through Owens St., the entire Highland area Bonanza Village and all points in between. The purpose of this tour was to acquaint the Bankers on the tour and their associates of the condition and the needs of the people of the Westside Community.

The points of interest were narrated by NEDCO Board Chairman William "Bob" Bailey. Mr. Bailey spoke of the historical background (from the ground up) the political influence, the diversity of classes, the times before integration, and the present economical and social condition of the Las Vegas Westside Community.

Considering the property available, educational resources and the influx of money, the majority of the bankers agreed that a long term program could fully develop the Westside Community. Among the Bankers and other guests were:

Raymond Bly, vice president, Prudential Life Insurance Co.; Douglas Ades, vice president, Chemical Bank of New York City; Samuel Ewing, director of Private Placement, Bankers Trust

Co. of New York City; Les Porter, Ford Foundation, New York; Charles Johnson, vice president, Bank of America of Los Angeles; Ed Lysek, president Chamber of Commerce, North Las Vegas; Larry L. Woodrum, ast. vice president First National Bank of Nevada; Ellen Shirley, CCE, executive vice president of Chamber of Commerce; and Boyd Bulloch, contractor "Boyd C. Bulloch Enterprises" N. Las Vegas and the Chairman of S.C.L.C. Thomas F. Hughes. Also included was Pat Arcuri, Las Vegas, Nevada, Representing New Zealand, Lamb Meat Sausage Co. LTD., Wellington, New Zealand. Mr. Arcuri was interested in the possibility of establishing a meat processing plant (by the New Zealand Co.) in the U.S.A. He was gathering data about the Westside area to include in his presentation to the New Zealand Meat Commissary Co.

Otis Harris, Project Director for the Westside Community Comprehensive Economic Development Plan, stated: "With this important step, we hope to accomplish a viable plan for economic growth of these communities." Mr. Harris also originated the idea for the Clark County Community College.

Ms Mattie M. Goings coordinated the tour and the Investment Bankers Workshop. Ms. Katherine Joseph was the project director.

CONTINUED TO PAGE 2 COLUMN 2

Rusco, Elmer R.  
Box 8947 University Station  
Reno, Nevada 89507