

BACK TO SCHOOL



OVER 230 SCHOOL BUSES will transport all students living more than two miles from their assigned classroom to and from school. Buses are housed at 25th and Stewart and on Arville off West Tropicana. The different yards reduce "deadhead" mileage (travel without children on board) and thus improve the efficiency of the transportation operation.

ENROLLMENT TO TOP

Enrollment in Clark County public schools is expected to increase about 1,000 students to a total just over 82,200 youngsters in kindergarten through 12th grade, according to the Clark County School District.

Most of the students are in the metropolitan area of Las Vegas, North Las Vegas and surrounding unincorporated area, which accounts for 73,840 students. 5,035 students are expected in Henderson's five schools, 1,729 in Boulder City, 813 in Moapa Valley, 371 in Virgin Valley, 321 in Indian Springs, and 122 in rural schools at Blue Diamond, Goodsprings, Mt. Charleston and Searchlight.

Better than 41,382 students are expected in elementary schools, while 20,632 will enroll in grades seven, eight and nine. 18,337 high school students are expected, while 1,880 youngsters at all grade levels will enroll in special education programs.

SCHOOL HOURS

Starting times for schools will be staggered by level again this year in the Clark County School District.

Elementary youngsters will be in school from 8:40 a.m. to 2:40 p.m. Sixth grade center students will begin classes at 9:20 a.m. and adjourn at 3:20 p.m.

Both junior and senior high schools will operate from 8:00 a.m. to 2:00 p.m. with the exception of Sunset High, which meets from 4:30 to 10:00 p.m. (Monday-Thursday) and 3:00 to 7:00 p.m. on Fridays in what is Las Vegas High during the day.

Staggered schedules allow the nearly 230 school buses operated by the school district to run two or three routes each both morning and afternoon. If all schools were on the same schedule, an estimated 500 buses would be required to provide the service now provided by 230.

BIRTH CERTIFICATES

Children who are five years old on or before September 30, 1976, are eligible to enter kindergarten this fall and should enroll at the school in the zone in which they reside.

All kindergarten enrollees should be accompanied by a parent or an adult who is conversant with the child's birthdate, status and history of health, and other personal information. It is imperative that every kindergarten child seeking enrollment present a birth certificate or other satisfactory proof of age (hospital certificate, baptismal record, or passport).

Experiences and events of the first day and first week of school are important. They are determining factors toward the child's success in this, his first year of school. The child who is deprived of a proper enrollment and orientation to the school program is at a great disadvantage. Planning, organizing and implementing enrollment and orientation are a responsibility of the school principal, with the teachers.

KINDERGARTEN

ENROLLMENT PROGRAM

Children entering kindergarten for the coming school year, and first graders who have not previously attended school in Clark County, will be required to present birth certificates or other proof of date of birth.

Birth certificates for children born in Clark County from 1955 to the present can be secured at the Clark County Health Department, 625 Shadow Lane, Las Vegas. The fee is \$2.00.

Birth certificates for children born in Clark County before 1955, and those born in all other Nevada counties, can be secured at the Department of Health and Welfare, Division of Health, Section of Vital Statistics, Carson City, Nevada. The fee is \$2.00.

Children born in other states should apply for birth certificates from the Bureau of Vital Statistics in the state capitol.

Children must be five and six years old by September 30, 1976, to enter kindergarten and first grade, respectively.

ELEMENTARY

SCHOOL REGISTRATION

Students new to elementary schools in Clark County should report for registration between August 24 and September 3.

Most students returning to elementary schools are already registered and need not report until the first day of classes on September 7. Principals who plan to deviate from this procedure have been instructed to contact parents by mail, according to Dr. Theron Swainston, Assistant Superintendent for Elementary Education.

Schools will be open from 8:00 a.m. to 3:00 p.m. Monday through Friday.

SIXTH GRADE

CENTER REGISTRATION

Returning students entering sixth grade centers this fall should report to the elementary school they attended last year September 2 or 3 for a bus ride to their new school. New students to the Clark County School District or students who did not attend a feeder school last year, should contact their neighborhood elementary K-5 school for Sixth Grade Center assignment.

Parents are encouraged to ride the bus with their children for registration. Students may, however, register for sixth grade without being accompanied by their parents. Buses will leave all elementary schools sending students to sixth grade centers at 9:00 a.m. and 1:00 p.m. Thursday, September 2, and at 9:00 a.m. Friday, September 3.

Parents who choose to drive their students to sixth grade centers may register them between 9:00 a.m. and 3:00 p.m. September 2 and 9:00 a.m. to noon September 3.

JUNIOR

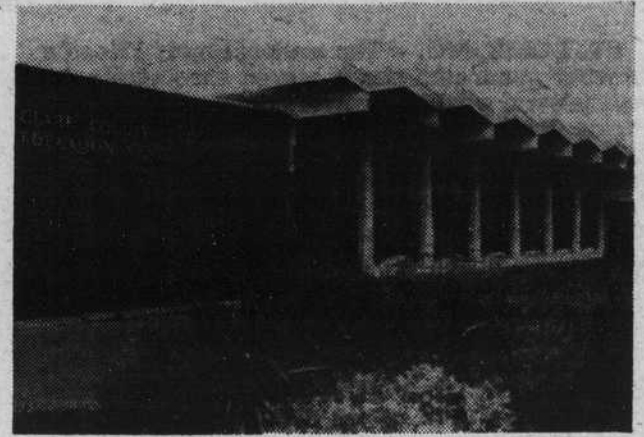
HIGH REGISTRATION

Students new to Las Vegas and those who have changed addresses over the summer should contact their junior high immediately. All returning students, including those who were in sixth grade last year, have been preregistered and will be contacted by mail.

Any student returning this fall who does not receive final registration instructions by mail by August 20 should contact his school immediately.

Registration for students who have not preregistered will be conducted from 8:30 a.m. to 3:00 p.m. Thursday, September 2, and from 8:30 a.m. to 12:00 noon Friday, September 3.

Students who don't know to which junior high they have been assigned should call the Clark County School District's Zoning Department 736-5268.



HEADQUARTERS FOR the central administration of the Clark County School District are at 2832 E. Flamingo Road, near Eastern Avenue. Opened in August 1964, the Education Center houses the office of Kenny C. Guinn, superintendent of schools, and four specialized divisions: Personnel, Business, Administration and School Facilities. Directly south of the Education Center and facing Eucalyptus Drive are the District's warehouses and maintenance buildings completed in 1966. The transportation department is located at 4499 W. Harmon Street. Educational television operates out of Southern Nevada Vocational-Technical Center, Mountain Vista and Russell Roads.

SENIOR

HIGH REGISTRATION

Senior high students will register between 8:00 a.m. and 3:00 p.m. Thursday and Friday, September 2 and 3, but each high school will handle registration in its own way.

Students should follow registration information they will receive in the mail, according to Bill Beitz, Assistant Superintendent for High School Education.

**EDUCATION TODAY...
FOR A BETTER
TOMMORROW**



WOVEN WOODS

Welcome to Woven Woods, the exciting new shade collection. Whether you choose shades or matching cafe curtains and draperies, you'll discover a unique decorating effect for your home in the rich texture of Woven Woods.

Come in and see the entire Woven Woods collection today. They're available in a variety of styles, colors, and patterns, so you're bound to find one that complements your decor.

We also beautify your home with..... **PHONE 385-3411**
DRAPES • SHUTTERS • SHADES • ETC.

NEVADA BLIND & FLOOR
1300 So. Main St.