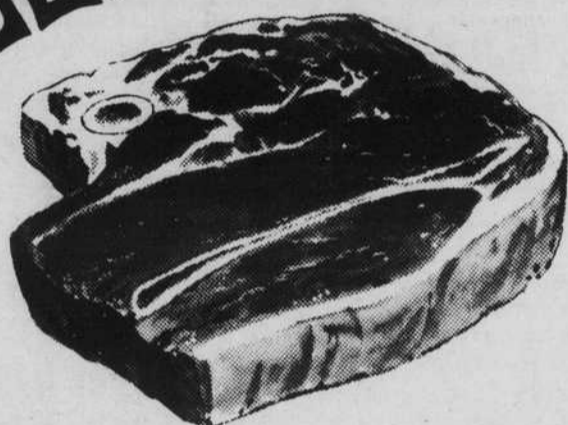


# A & J JIFFY MARKET

Check cashing & money orders  
We accept food stamps

Prices effective  
Sept. 4th thru  
Sept. 11th, 1975

## BUDGET Meat Buys



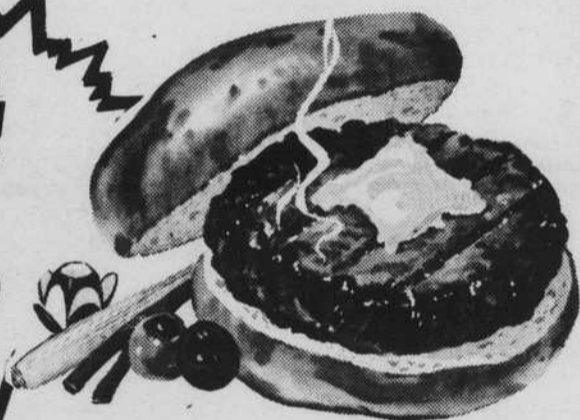
### BEEF STEAK

- Sirloin Tip Steak .....1.69 lb
- Chuck Steak ..... .98
- T-Bone Steak..... 1.49
- Round Steak..... 1.39
- Porterhouse Steak .....1.59
- Rib OR Club Steak ..... 1.39
- Beef Liver ..... .69
- Short Ribs ..... 89

### BEEF ROAST

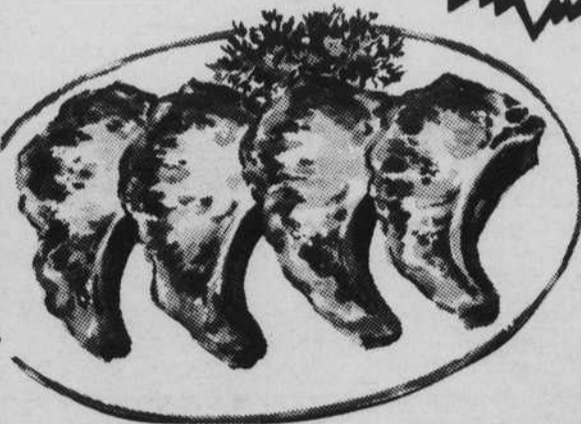
- Round Bone Roast .....1.09 lb
- Seven Bone Chuck Roast .... .98
- Chuck Roast ..... .89
- Sirloin Tip Roast BONELESS ..... 1.59
- Standing Rib Roast .....1.39

Lean  
Ground  
Beef  
3 lb  
1.39



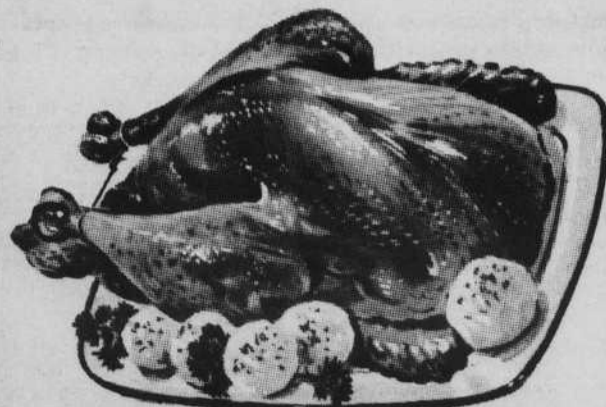
### PORK

- COUNTRY STYLE
- Pork Sausage 2<sup>LB</sup>/1.00
  - Pork Butt Roast ....1.49
  - Pork Roast RIB END ..... .98
  - Spare Ribs .....1.29
  - Ham Hocks ..... .89
  - Neck Bones
  - Pig Tails
  - Pig Ears } .69
  - Hog Maws
  - Pig Feet
  - Pork Steaks.....1.29
  - Pork Chops BLADE CUT.....1.29
  - Pork Chops CENTER CUT.....1.59
  - Slab Bacon.....1.59
  - Salt Pork ..... 1.49



### POULTRY

- Turkey Drumsticks .55 lb
- Turkey Necks ..... .49
- Turkey Wings ..... .59
- Fryers ..... .69



## 631 No "H" Street

7 AM to 11 PM DAILY

PHONE 648-0942

ORIGINAL DEFECTIVE