

Focus on Seniors

Bruce's LIQUORS

Phone 648-9966

2027 North Revere

The Clark County Parks and Recreation Department will hold registration starting June 2, for a Senior Citizen Day Camp on June 12 and 13 at Mt. Charleston. Transportation is provided and there will be no fee.

Registration must be made in person at either Paradise Community Center, 4700 S. Harrison or Sunrise Community Center, 2240 Linn Lane.

Information is available from Jane Halligan, recreation coordinator, Clark County Parks and Recreation Dept. 384-8472.

MT. CHARLESTON 8,000'

CLARK COUNTY PARKS & RECREATION

Senior Citizens DAY CAMP

June 12 & 13
8:30am - 4:30pm

REGISTRATION (JUNE 2) & PICK UP POINTS:

PARADISE CENTER 4770 So. Harrison SUNRISE CENTER 2240 Linn Lane

BRING: Lunch (1st day), jacket
WEAR: Long slacks, old shoes
Beverage provided & water available

NO FEE!

DRAPERIES!

BIG WINDOWS!
LITTLE WINDOWS!



IF YOU NEED DRAPERIES... AND MISS THAT GOOD

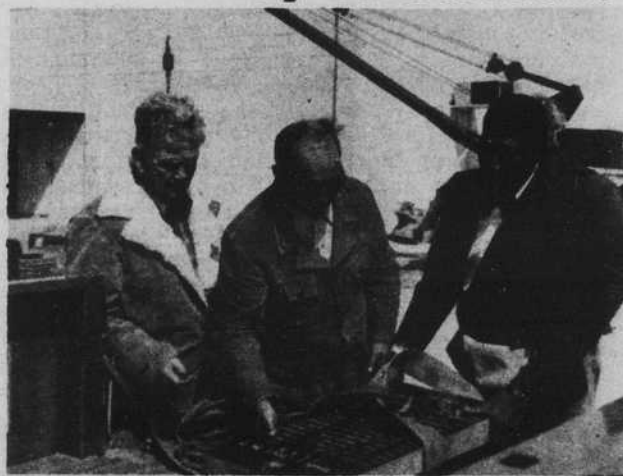
Old Fashioned

QUALITY...GIVE VIRGIL A CALL HE'S BEEN DOING THIS FOR YEARS.

385-3411

NEVADA BLIND & FLOOR CO.
1300 So Main St.

Callihan helps lay cornerstone



Harold Callihan, candidate for a seat on the city council of North Las Vegas, is shown at left, participating in ceremonies marking the laying of the cornerstone for the new St. Mark's Lodge building. Callihan is assisting Lorin Byrne is putting the canvas sling around the cornerstone before it was placed in the building. At right is lodge master.

Callihan while he was street superintendent for the city of North Las Vegas before retiring helped St. Mark's lodge in preparing the building site.

Witherspoon featured in Channel 10 concert

Veteran blues singer Jimmy Witherspoon will be featured in a half-hour concert during a repeat of the 'One of a

Kind' series on Channel 10 Monday, June 2 at 9:30 p.m. and repeating Saturday, June 7 at 10:30 p.m.

On the program Witherspoon performs "My Babe," "Ain't Nobody's Business," "Spoonful," "Past 40 Blues," "Kansas City" and "Nothing's Changed."

A native of Gurdon, Kansas, Witherspoon had his first hit in 1952 with "Ain't Nobody's Business." He defines blues as "something you feel. And to feel it, you've got to have lived about 98 percent of it."

Love Your City

Take a personal interest in its growth. It's your duty to vote - Tues. June 3rd.

We need HARRY REID for MAYOR.

Attorney-Family Man-Aggressive-Honest-Experienced. Dedicated - "That's it," Paid for by Dorothy and Harry Levine.

1325 NORTH MAIN STREET - LAS VEGAS
PHONE 382-1340

Palm Mortuary

Serving All Faiths

James A. Gay
Mortician
382-9626

Andrew Jackson
Family Counselor
382-1386

SERVICE WITH DIGNITY
MODERN FACILITIES ADVANCE OF NEED ARRANGEMENTS
FUNERAL TRUST FUNDS

Phil's Salvage, Inc. PHIL DAVE
Builders Emporium 382-7828
NEW & USED BUILDING SUPPLIES 1191 SO. MAIN

AIDES IN ACTION



COMPOST IMPROVES SOIL

Your garden soil can be improved with the use of plant residue made into compost. Leaves, grass clippings, stems and stalks from harvested vegetables, husks, and twigs can be made into compost. Paper has very little fertility value and if it contains ink it should not be used, as it contains elements harmful to you if absorbed by the plant and then consumed.

Very little odor is given off in the process of composting as long as only the stems and leaves of plants are used. Odor can sometimes be detected when the compost pile is started with green plant material.

A pile five feet square usually is large enough for home plant materials.

Compact and moisten each layer of material you apply. Add 3 cups of 5-10-0 per bushel of material and 2/3 cup gypsum. If 5-10-0 is not used add 1 cup of ammonium sulfate or 1/2 cup of ammonium nitrate per bushel of material.

The interior of the mulch pile should be kept moist. The sides of the pile can be kept vertical by means of blocks or wire fencing.

After the interior material has rotted, the entire pile should be forked over and the undecomposed outside material turned in toward the center.

Add plant materials as they become available for use. If garbage is used, it should be limited to peelings, pods, and tops of vegetables.

When compost is incorporated into the soil the physical condition is greatly improved and a storehouse for plant food and moisture is created.

The programs of the Nevada Cooperative Extension Service are open to all. Call 385-6411 for additional gardening information.

Clubs host CAREER CLINIC

Les Femmes Douze, Academy, Educational Kappa Alpha Psi Fraternity and the Social Military.

The luncheon speaker held the Annual Career Clinic for MU Debs and Kappa Alpha Psi Guide Right Program at the Moyer Student Union on Saturday, May 17, 1975.

The theme for the conference was "Exploring the World at Work."

Career consultants were Social Work, Law, Communications, and Journalism, Theatre Arts, Business Hotel Industry, Professional Service Club.

PPPT Banquet

Poor People Pulling Together, a non-profit organization in Las Vegas has announced a testimonial banquet June 19 honoring County Commissioner Aaron Williams.

Donations will be \$7.50 per person, with proceeds going to PPPT to finance its efforts within the community.

Information is available from the PPPT office, 1285 W. Miller Ave.