

Way To Catch More Fish Medicare Premium

Anglers who stay with their fishing rod consistently catch more fish. Anglers who leave their rod unattended catch fewer fish and are also breaking the law.

Nevada fishing regulations require that all fishing rods be attended at all time. Most Nevada fishermen are aware of this law but sometimes forget when the fishing action slows.

Officials of Nevada Department of Fish and Game report that occurrences of unattended fishing rods greatly increase when youngsters are involved in the fishing party.

According to the Department, that attention span of the young fisherman in many instances will not exceed 30 minutes and if the father or mother is not paying particular attention, they can easily find themselves in a situation where they are fishing with an unattended rod because Junior is back in the boondocks climbing a tree or looking for a snake.

The solution is very simple: when you leave the shore of a lake or stream or when the novice angler decides to explore greener pastures, simply remove the line and rod from the water.

If for no other reason, you should stay close to your rod because most waters of the state harbor big lunker-sized fish and you never know...you might be the next to casually glance back from some distance at your favorite fishing piece, and see it being pulled out into the water by that record-breaking bass!

The monthly premium for Medicare medical insurance, scheduled to be increased in July, has been rolled back in keeping with President Nixon's 60-day price freeze policy, according to Ed Cocks, social security district manager, Las Vegas, Nevada.

"The higher amount will continue to be charged until the premium record for each beneficiary can be corrected," Cocks said. "Refunds in full will be made at a later date. This also applies to railroad retirement beneficiaries and civil service annuitants who pay premiums for medical insurance under Medicare."

Medicare medical insurance helps pay for doctor bills and many other medical expenses of almost everyone 65 or over and disabled people under 65 who have been eligible for monthly social security disability payments for 2 years or more.

VA NEWS

Q--Several years ago I elected to receive benefits under the new pension law because my income exceeded the \$1,600 annual income limitations that would result in termination of benefits under the old pension law. Now that income limitations under the old laws have been increased, can I go back to drawing pension under the old law?

A--No. Once a pensioner has chosen benefits under the new law, he cannot go back to the old law.

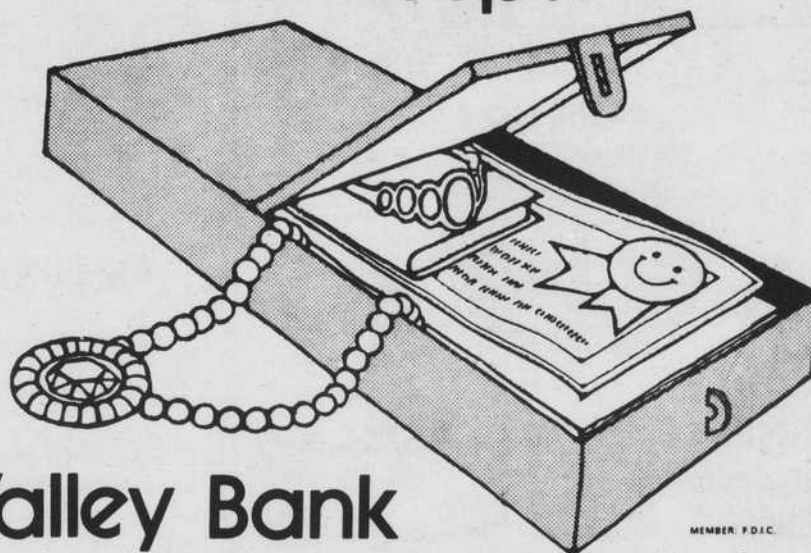
EVERGREEN ARMS

1-2-3-4 BEDROOM APARTMENTS
1-1-1/2 BATHS-UTILITIES INCLUDED

RENTS from 112⁰⁰ UP

1000 W. MONROE ST. 648-8948

Come to Friendly Valley for keeps.



Valley Bank

MEMBER F.D.I.C.

CASH Money To Loan
LOANS ON- ANYTHING OF VALUE
DIAMONDS WATCHES JEWELRY RADIOS LUGGAGE CAMERAS TOOLS GUNS, TV'S. MUSICAL INSTRUMENTS ETC.
AAL-JAY PAWN SHOP INC.
PH. 642-1133 • 1618 LAS VEGAS BLVD. N.
642-7151

NO DOWN PAYMENT CLOSING COSTS ONLY

LOW-LOW MONTHLY PAYMENTS

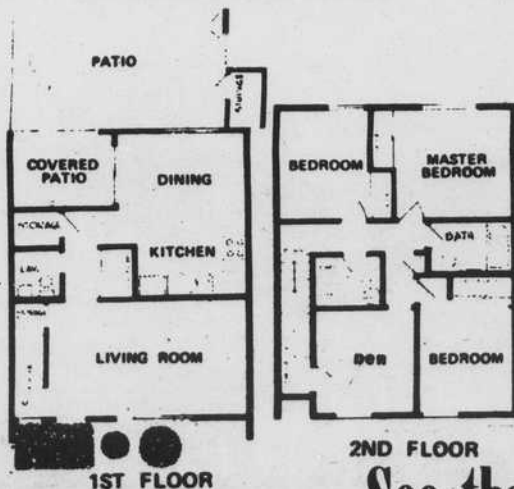
you can own a townhouse in

Glenwood park Townhouses

30 YEAR FINANCING AVAILABLE UNDER 235-1

from **\$20,750.**

- 3 BEDROOMS & DEN
- 1 1/2 BATHS
- CARPETING
- DRAPES
- STORAGE AREAS
- PRIVATE PATIOS
- REFRIGERATED AIR CONDITIONING
- COVERED PATIOS ADJACENT TO THE DINING ROOM
- CLOSE TO SCHOOLS, SHOPPING & CHURCHES
- LANDSCAPING



See the furnished Model
YOU'LL BE PLEASANTLY SURPRISED

phone 649-8888

Quality Development by
L & R CONSTRUCTION, INC.

Open 7 days 10 a.m. till 7 p.m.

DONNA & CARTIER

Glenwood park Townhouses

NO DOWN PAYMENTS AS LITTLE AS \$100 per mo.

Under a special United States Government action Glenwood Park Townhouses for a very limited time have been made the only Builders in Nevada to be able to sell under the 235 i program. There will be no more 235 i Loans issued by the government. The program has been stopped. Call now 649-6880 for information. Under this program the United States Government makes a large part of the payment and you make part (you pay far less than rent). ACT NOW and you may be one of the lucky ones who will own one of these beautiful four bedroom townhouses. Just think no more worries about the lawn - the landscaping - the trash - the watering - the outside is completely taken care of for you and the government makes a large part of the payment for you.

NORTH ON CIVIC CENTER DRIVE FROM SALT LAKE HIGHWAY TO CARTIER. LEFT TO DONNA

Open 7 days 10 a.m. till 7 p.m.