

SCHOOL CALENDER 1972 - 73

August 14	Principals return
August 30	Teachers report
August 31, Sept. 1	Registration days
September 4	Labor Day (no school)
September 5	Classes begin
October 23	Veterans Day (no school)
November 3	End of first nine weeks (43 days)
November 23, 24	Thanks giving vacation
December 15 (end of day)	Christmas vacation begins (Dec. 16 - Jan. 1 incl.)
January 2	Classes resume
January 26	End of second nine weeks (47 days) End of first semester (90 days)
February 19	Observe Washington's Birthday (no school)
March 30	End of third nine weeks (44 days)
April 19-23	Spring vacation (Thurs. - Monday)
April 22	Easter Sunday
May 28	Memorial Day (no school)
June 8 (Friday)	End of fourth nine weeks (46 days) End of second semester (90 days) End of school year (180 days)

CLASSIFIED HELP WANTED CITY OF NLV

Clerk Typist
- SALARY RANGE - \$536 - \$721.
SHIFT WORK 5-Day Week. 30-Day residence requirement in Clark County. MINIMUM EDUCATION: High School Graduate. Typing speed 55 wmp with high degree accuracy. Two years clerical experience. Applications will be taken through August 24, 1972. For further information contact Personnel, 2200 Civic Center Drive, North Las Vegas.

AN EQUAL OPPORTUNITY EMPLOYER

HELP WANTED
Man to work behind counter at Coliseum Roller Rink. See Mr. Hall at 7 P.M. - 1500 East Foremaster Lane

POLL WORKERS


Any registered voter interested in working at the polls as an Election Board Officer on Primary Election Day, September 5th, may apply by telephoning the Clark County Election Department at 382-4982.

CLASSIFIED HELP WANTED CITY OF NLV

Police Community Relations Aide
- Salary Range - \$621 - \$849. Must be North Las Vegas Resident. High School Graduate or G.E.D. supplemented by Police Community Relations courses AND a MINIMUM of one year's experience in Police Community Relations. Applications will be taken through August 23, 1972. For further information contact Personnel, 2200 Civic Center Drive, North Las Vegas.
WRITTEN EXAM: AUG: 24, 1972 - 8:30 a.m.
ORAL BOARD: AUG: 25, 1972 by appointment.

AN EQUAL OPPORTUNITY EMPLOYER

Advertisers buy ads so you'll read them!




Loma Vista / East

IN CHARLESTON HEIGHTS
WHERE YOU CAN LIVE BETTER FOR LESS

**2-3-4 BEDROOM HOMES
FROM \$21,000**

FHA-VA • \$300 Total move-in to approved vets • Immediate occupancy • Models open 10 AM to 5 PM

- Balanced power patio kitchens
- Dining area
- Carpeting
- Refrigerated air conditioning
- Front and rear landscaping
- Garages



Sales Phone 648-3184

Advertisers buy ads

so you'll read them!

☆☆☆
Every ten seconds forest fires destroy 50 trees.



EQUAL HOUSING OPPORTUNITIES

FHA ACQUIRED PROPERTIES OFFERED FOR SALE THROUGH REAL ESTATE BROKERS

The following properties are listed for sale. If more than one offer is received a drawing will be held Monday August 21, 1972, at 11:00 a.m. in the Las Vegas FHA Office Subject to error.

CASE NUMBER	ADDRESS	PRICE	CODE
332-029237-235	965 Balzar Ave., LV.	22,000.	D-1
332-016364-203	1956 Walker St., LV.	17,000.	HB-1

The following properties have been previously listed. All offers will be accepted on a first-come, first served basis:

332-033153-221	1209 Adams St., LV.	19,700.	D-1
332-033805-235	863 Blankenship, LV.	22,000.	D-1
332-027994-203	3705 Budlong Ave., LV.	22,500.	N-1
332-031199-235	1037 Blankenship, LV.	22,000.	D-1
332-027043-235	203 Fullerton, Henderson	22,000.	H-1
332-031560-235	880 Lawry Ave., LV.	22,000.	IB-1
332-033127-203	5317 Lytton Ave., LV.	30,000.	ZB-1
332-023342-203	1408 Margaret Ave., LV.	25,000.	PB-1
332-025763-235	1825 Nelson Ave., NLV.	17,500.	D-1
332-028968-235	938 Palmetto St., Henderson	22,500.	N-1
332-027373-235	2539 Raymond St., NLV	21,200.	L-1
332-028213-203	440 Steiner St., Henderson	25,000.	PB-1
332-029539-235	209 Valley Forge Ave. Hend.	22,000.	H-1

The following property is being sold "ALL CASH AS IS." No repairs will be made by FHA and the following statement is to be added to Item "H" of the Sales Contract: "Item No. 11 on the reverse hereof is void and of no effect and the purchaser will make no claim thereunder."

CASE NUMBER	ADDRESS	MINIMUM OFFER ACCEPTABLE	MINIMUM DEPOSIT
332-021436-22	2048 Glider St., NLV	10,000.	G-1

For Section 235 financing property and buyer must qualify and a \$200. deposit must accompany application. Financing is also available with a low down payment under Veteran's Preference and Section 221. These terms are not available to investors.

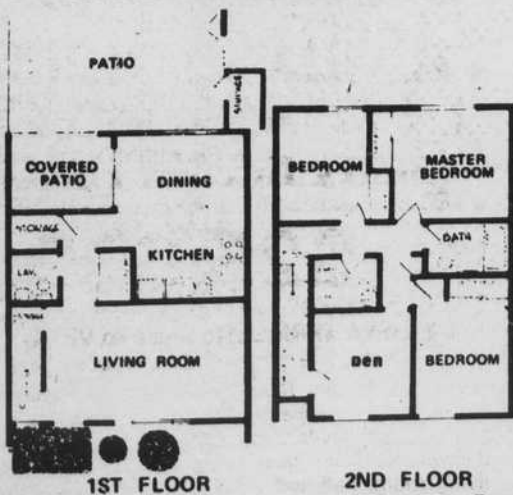
FHA PROPERTIES MUST BE SOLD WITHOUT REGARD TO THE PROSPECTIVE PURCHASER'S RACE, COLOR, RELIGION OR NATIONAL ORIGIN

WHY PAY RENT? ...for LOW-LOW MONTHLY PAYMENTS

you can own a townhouse in

Glenwood park Townhouses

30 YEAR FINANCING AVAILABLE UNDER 235-I from **\$20,750.**



- 3 BEDROOMS & DEN
- 1½ BATHS
- CARPETING
- DRAPES
- STORAGE AREAS
- PRIVATE PATIOS
- REFRIGERATED AIR CONDITIONING
- COVERED PATIOS ADJACENT TO THE DINING ROOM
- CLOSE TO SCHOOLS, SHOPPING & CHURCHES
- LANDSCAPING

See the furnished Model
YOU'LL BE PLEASANTLY SURPRISED

phone 649-6880

Quality Development by
L & R CONSTRUCTION, INC.

