

Elmer R. Rusco
Box 8347 University Sta.
Reno, Nevada 89507



***** We Are In Our 9th Year Of Uninterrupted Publication *****



LAS VEGAS Voice

PRICE

15c

PER COPY

Vol. 9, No. 41

LAS VEGAS, NEVADA

Thursday, July 13, 1972

NLV POLICE CHARGED WITH BRUTALITY

The arrest of four persons suspected of robbing a North Las Vegas Finance Company has brought out charges of police brutality against the North Las Vegas Police Department.

According to reports reaching the Voice, the conduct of the officers making the arrest is the reason for the brutality charge. The kicking down of the doors and the ruffing up of minor children at both places, if true, would cast a dark cloud of suspicion over the North Las Vegas Police Officers making the arrests.

Our investigation of the brutality charge will continue. We hope to have a full report next week.

LV Police & Accomplices Charged With \$250 Theft

A Saugus, California man reported to the North Las Vegas Police that he was robbed of \$250 while sleeping in a room offered by a man and two women he met Friday evening in a downtown hotel casino.

Based upon information and identification supplied by the California man, North Las Vegas Police arrested Walter Allen, a Las Vegas Police Patrolman and two female companions, Coretha Davis, and Ollie Pough.

All three were booked into the North Las Vegas City Jail on the same charge.

Severe Disability Is More Severe Among Non-White Workers According To Social Security Study

Severe disability is more common among non-white workers than white workers, according to a social security study.

Of the 74 million workers under 65 who have disability protection under social security, 11 percent are non-white--but of 1-1/2 million who are severely disabled and get monthly social security checks, 15 percent are non-white, the study show.

"Several factors contribute to the higher incidence of disability among non-white workers," according to Ed Cocks, social security district manager in Las Vegas. "Among them are lower incomes--therefore less access to adequate health care and proper nutrition. In addition, non-white workers tend to hold more hazardous jobs," he said.

Disability checks are paid by social security to eligible workers who are severely disabled and cannot work for a year or more. Certain members of their families can also qualify for monthly benefits as dependents.

Social security pays \$296 million a month in disability benefits to 2.9 million disabled workers and their dependents.

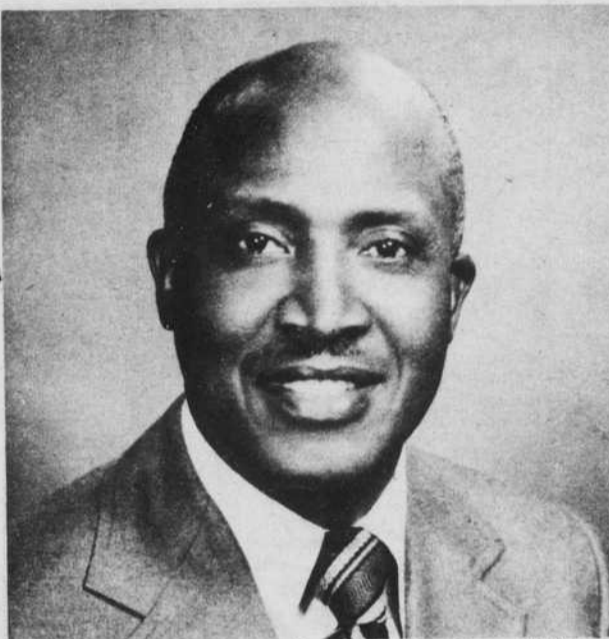
The average payment to a severely disabled non-white worker with a wife and one or more children is \$270 a month--compared to \$318 a month to a white disabled worker with a wife and one or more children.

"The difference reflects lower earnings among non-white workers," Cocks noted. "The amount of the monthly payment from social security is based on the worker's average earnings over a period of years."

The study, based on census information, was conducted by the Social Security Administration.

In selected disability cases, social security helps pay for a worker's vocational rehabilitation services from State or local agencies, Cocks said.

WOODROW WILSON FILES FOR SENATE SEAT



Las Vegas Assemblyman Woodrow Wilson, the first and only Black to serve in the Nevada Legislature, filed for a seat in the State Senate.

Wilson, currently serving his third term as a Republican member of the Assembly, said he will run in the newly created Senate District 4.

"We've accomplished a great deal of good, but there are many more social reforms needed," said Wilson, who sponsored and led the fight in the 1971 session for passage of Nevada's first fair housing law.

"With my experience as chairman of the Assembly Health and Welfare Committee and other legislative activities behind me, I feel that I can now be even more effective in the State Senate," said Wilson.

Honored last summer by the University of Nevada here as a "Distinguished Nevadan," Wilson served last year as co-chairman of the National Black Elected Officials Conference in Washington, D.C.

He has appeared on national platforms with such Black leaders as Southern legislator Julian Bond and Sen. Edward Brooke (R-Mass.).

A 30-year resident of Las Vegas, Wilson was first elected to the legislature in 1966. He has since served on numerous boards and commissions and is Chairman of the Nevada State Advisory Committee for the U. S. Civil Rights Commission.

He was president of the Las Vegas Branch of the NAACP from 1949 to 1953; was Nevada's first Black Scoutmaster and continues to serve on the Executive Committee of the Boulder Dam Area Council of the Boy Scouts.

In the legislature he also has been a member of the education committee, social welfare, civil defense and veterans affairs committees.

In 1969 he was named an advisor for the Ford Foundation-sponsored Joint Center for Political Studies at Howard University in Washington, D. C., and has continued in that position since then.

For nearly 20 years he has been treasurer-manager of the Westside Federal Credit Union, and has worked in Henderson for 22 years for what is now known as the Kerr-McGee Chemical Corporation.

He and his wife, Nora, reside at 625 Frederick Avenue. They have two grown children living in Las Vegas.

EMPLOYMENT SECURITY NEWS

CARSON CITY--There's more job security in occupations covered by unemployment insurance, record of the Nevada Employment Security Department show.

A 15-year count of annual average unemployment rates through 1971 show insured workers' unemployment rates have been as much as 1.7 percentage point lower than the total rate for all workers. The wide spread was in 1970 and 1971.

Department Director Robert Archie said the smallest gap between unemployment rates of insured workers and total workers was 6.0 percent in 1964.

Insured workers hold jobs with employers who contribute to the State Unemployment Trust Fund. Employers' contributions through their payroll taxes are the funds for unemployment checks. There are no deductions in Nevada from workers' paychecks for unemployment benefits, Archie said.

Unemployment rates include all jobless workers, whether or not they held jobs with employers who offer unemployment insurance.

Licensing Of Physically Handicapped Drivers

CARSON CITY---A statewide planning committee has been organized to update existing methods regarding the instruction and licensing of physically handicapped drivers, Department of Motor Vehicles Director Howard Hill announced today.

Hill stated that representatives from the Department of Education; Health, Welfare and Rehabilitation; and Motor Vehicles, met recently in Carson City to formulate committee plans.

"Initially," said Hill, "The committee will study certification of instructors for physically handicapped drivers and the latest methods regarding licensing procedures for the handicapped driver."

Three State officials last month visited the Widney School for the handicapped in Los Angeles, to observe the techniques used in the instruction of physically handicapped. They also met with a Driver Improvement Analyst of the California Department of Motor Vehicles to discuss licensing procedures. Attending were Paul Cohen, Safety and Driver Education Consultant with the Department of Education; Bill Kelly, Supervisor of the Reno area Rehabilitation Division of the Health, Welfare and Rehabilitation Department; and Inspector Evan Botts of the Department of Motor Vehicles' Drivers License Division.

Freddie Little, Deputy Director of the Department of Motor Vehicles has been selected chairman of the planning committee. Other committee members include: Cohen, Kelly, Botts, Smokey Davis, Special Education Consultant, Department of Education; Richard Bortolin, Deputy Attorney General, Department of Motor Vehicles; Bill Hopkins, representative of the Nevada Independent Insurance Agents; John Borda, Highway Safety Coordinator; and David McKinnon, Reno.

Members of the committee will outline final plans dealing with the certification of instructors and the licensing of physically handicapped drivers at their next meeting.