



# Fishing

## INFORMATION

### By "The Crappie Catcher"

IT'S GOOD news today for Lake Mead fishermen. The grandest of fishing holes is accessible by boat after three years of being landlocked.

Once again you can get your boat into Grand Wash provided you know something about the waters in that most extreme eastern part of Lake Mead.

The fish are there and they are biting like they did in yesteryear. If you know the area, you can get into Grand Wash by using the directions which follow. If you don't know the area, don't try it unless you follow one of the old-timers like Red Marion, DeWitt, Big Boysie, Preacher Parker, Pauline, or Miss Rosie. It would be wise to talk to one of them even if you think you can follow our directions.

WHEN YOU come out of Iceberg Canyon, enroute to Grand Wash, keep close to the shore on the left, but don't cut the points too close.

You must keep the big island, between the canyon and, the river mouth, on your right. You can't get your boat through the wide waters to the right of the island as you did in the good old days. There is not enough water; you will run aground on the outside of the island.

You must go inside the island, keeping 25 to 30 feet from the left shore. Much of the time you will be going right through the brush. If you go slowly, you will have no problem even if you do run into shallow water. The river current is swift enough to push your craft off the bottom.

STAY CLOSE to the Bee Hives after passing the island. Once you pass the Bee Hives, you will be home free.

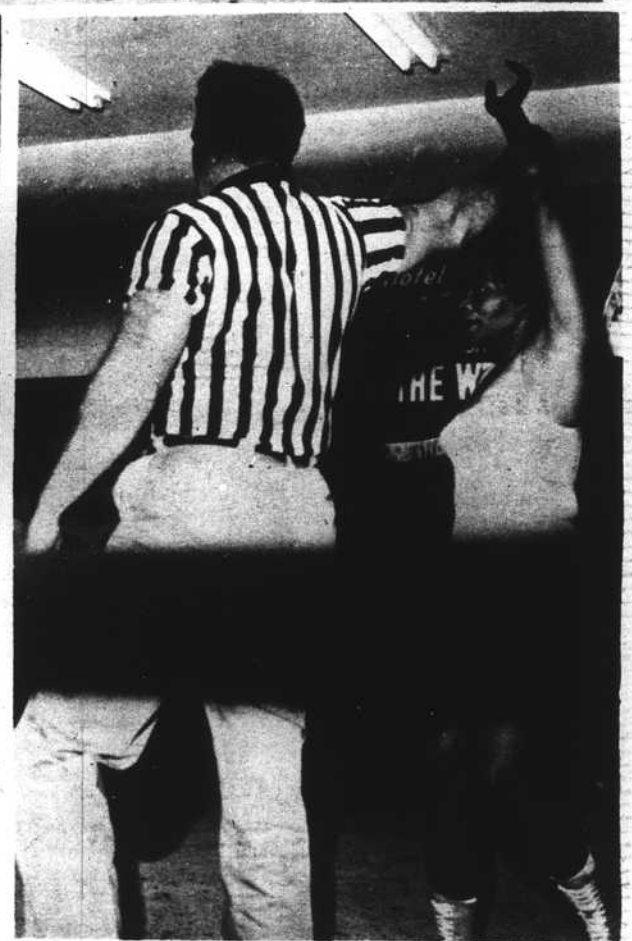
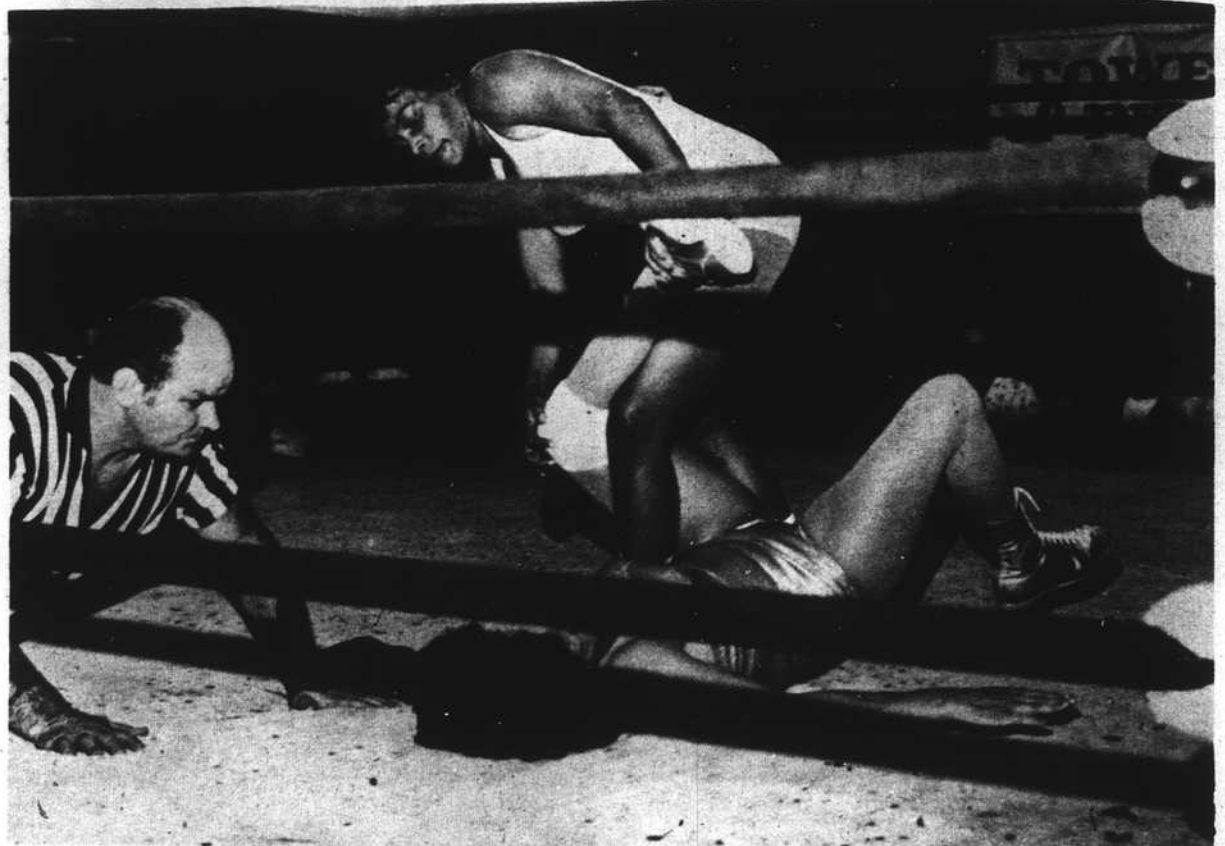
The fish have been biting close to the shoreline in the edges of the brush. Most fishermen have been using a bobber and fishing about 4 or 5 feet deep.

If you get into Grand Wash, you will catch fish. If you don't find them in one place, try another--you won't miss.

#### CRAPPIE CATCHER TIP OF THE WEEK

'Long Count' Wally Clay is back in the bait business on Boulder Highway. He is located just next to TV-3, across the highway from Skyway Drive-In Theatre. See his ad on Sports Page.

## LOOKS GREAT ? - LOST THE MATCH



LOOKS ARE DECEIVING--Particularly when the camera is dead in your corner... VOICE photographer was on hand at the Fremont Hotel last night to catch action shots of the Women's Championship Wrestling Match between veteran defending Women's Wrestling Champ Mae Young and Pearlie Behn, the only active Negro woman wrestler.

Pearlie Behn is a native of San Bernardino, California but works out of New York City. She defeated Mae Young previously in a non-championship bout... Pearlie has been wrestling for three years--likes it and treats it seriously. She arrived here for the match with Mae Young directly from a three week Southern tour where she was engaged in matches every night except Sundays... The worst injury she has ever sustained thus far is a fractured ankle which occurred only three weeks ago... Perhaps it can be held accountable for the fact she won only one fall in the match last week and is not now the new champion of women wrestlers.

Dupont 501 Nylon Carpet  
 Completely Installed with Rubber Pad  
**7.95 SQ. YD** No Down Payment  
 Terms up to 36 Mos.  
**NEVADA BLIND & FLOOR**  
 1300 S. Main 385-3411

"COMPLETE BAIL BOND SERVICE AROUND THE CLOCK"  
**LYLES' A-AA BAIL BOND**  
  
 Now In  
 New Office  
 Cor. Main  
 & Bonanza  
 (2 Blks  
 From City Jail)  
 PHONE  
**384-5544**  
 E. Lyles

**BRUCE'S LIQUORS**  
 642-4394  
  
 2027 N. Revere

**KELLY'S LIQUORS**  
 382-7555  
 WINES LIQUORS  
  
 810 W. Bonanza

"LONG COUNT" WALLY  
 IS BACK IN BUSINESS  
**BAIT & TACKLE**  
 4012 Boulder Highway  
 Next to TV 3  
 Across from Skyway Drive In  
**CLAY'S BAIT & TACKLE**  
 Phone 737-2505