

Food Forum

Dorothy Johnson

The "Holiday Season" is almost upon us, and having been asked by several persons for 'Drink' recipes here, to my knowledge, are the most popular mixed drinks and those most frequently used--save them for the approaching holidays. Later, I shall give you Egg Nog, Tom & Jerry, and Hot Buttered Rum recipes.

MARTINIS

Classic Martini: 1-1/2 oz. Dry Gin, 1/2 oz. Dry Vermouth. Stir with cracked ice, strain into cocktail glass. Serve with olive or twist of lemon peel.

Stone Dry Martini: 2-1/4 oz. Dry Gin, splash of Dry Vermouth. Stir and serve as above.

Vodka Martini: Prepare as above, but use Vodka in place of Dry Gin.

Gibson: Prepare as Classic Martini, but use Pearl onion in place of olive.

MANHATTANS

Classic Manhattan: 1-1/2 oz. Whiskey, 1/2 oz. Sweet Vermouth, dash Aromatic Bitters. Stir with cracked ice; strain into cocktail glass.

Brandy or Rum Manhattan: Prepare as Classic Manhattan, but use Brandy or Light Rum, respectively, in place of Whiskey.

Rob Roy: 1-1/2 oz. Scotch Whiskey, 3/4 oz. Sweet Vermouth, dash Orange Bitters. Stir with cracked ice; strain into cocktail glass.

Bloody Mary: 1-1/2 oz. Vodka, 3 oz. heavy tomato juice, 4 drops worchestershire sauce, dash salt, dash pepper. Shake well with cracked ice. Strain--serve in highball glass.

Bloody Maria: Spanish Bloody Mary. Use Rum in place of Vodka.

French 75: 1-1/2 oz. Brandy; juice 1 lemon, 1 tsp. sugar. Shake with ice; strain into highball glass. Fill with chilled Champagne.

Screwdriver: 1-1/2 oz. Vodka in highball glass with ice. Fill with orange juice--stir.

TONICS

Gin and Tonic: Juice 1/4 lime or lemon. Rub lime or lemon around inside edge of highball glass prepared with 2 ice cubes. Drop peel into glass, pour 1-1/2 oz. Dry Gin and fill with Quinine Water.

Vodka or Rum and Tonic: Prepare as above, but use Vodka or Rum, respectively, in place of Dry Gin.

GIMLETS

Gin Gimlet: 1/2 oz. sweetened lime juice (Rose's) 1-1/2 oz. Dry Gin. Stir and serve over ice cubes in Old Fashioned or Cocktail glass. Garnish with thin slice of lime. You may use Vodka or Rum in place of Gin.

FOR THE YOUNGER SET

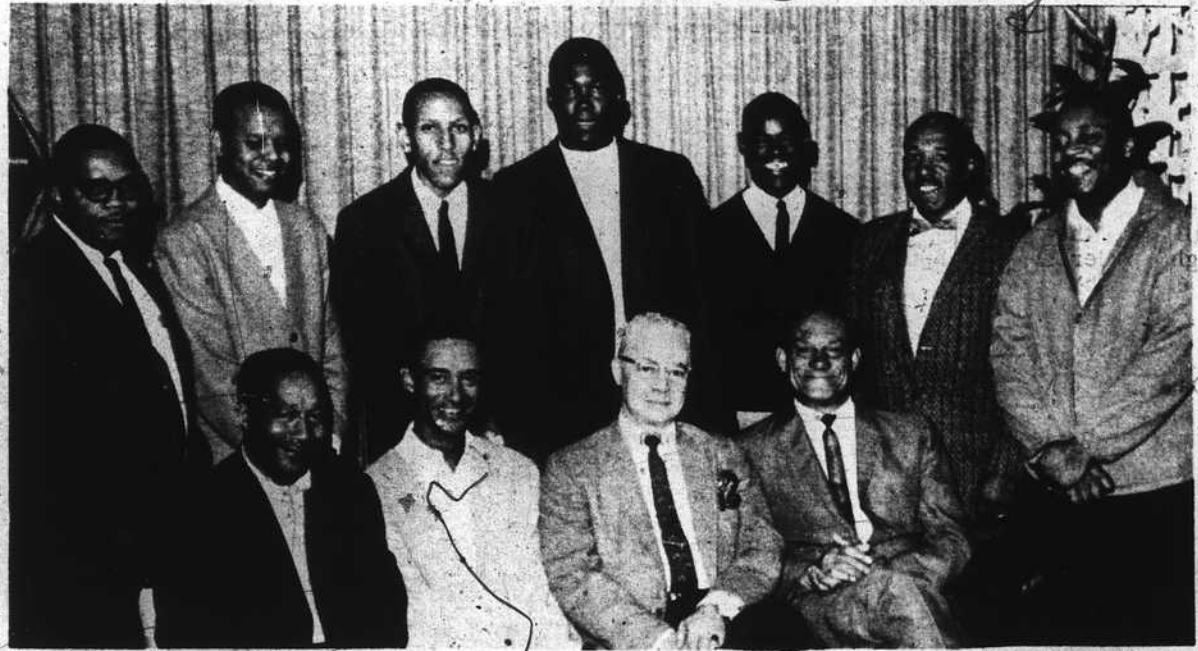
Horse's Neck: Ginger Ale and ice cubes in Highball glass. Decorate with spiral lemon peel and cherry.

Sherbet Delight: Float big scoop of lime sherbet on iced pineapple-pear juice in tall glass; top with shaved chocolate. Also enjoy mint flavor, orange, lemon or pineapple sherbet.

Shirley Temple: Club soda flavored with Grenadine in-Cocktail glass prepared with cherry or strawberry.

Iced Chocolate Sugaree: Combine 3/4 c. cocoa, 3/4 to 1 c. sugar as preferred, and 1/8 tsp. salt in pitcher. Stir 3/4 c. hot water into mixture until well blended. Add 3 c. chilled milk, 1 pt. chilled heavy cream, 1 tbsp. vanilla extract and blend. Garnish with whipped cream. Serves 6.

Kappas Fete Visiting Brother



GUEST FRATERNITY BROTHER at a recent meeting of the Las Vegas Alumni Chapter of Kappa Alpha Psi held in the home of Mr. and Mrs. Hershel Williams was the Honorable Louis Clymer, Municipal Judge for the City of Kansas City, Mo. Shown at the festive "Turkey Dinner Meeting" (seated from l-r) are Joe Haynes, Sr., J. David Hoggard, Jr., Lee Rayford, William H. Smith, Jr., Hershel Williams, Herbert Freeman, George Sherman, and Meldon Woods. Judge and Mrs. Clymer were the house guests of Mrs. Kermit R. Booker, Sr.

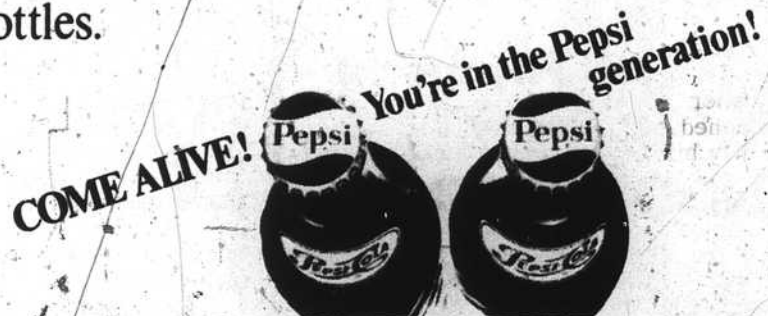


Push-button drive.
Custom-built for the Pepsi generation.

Instant pick-up.
More go for your money.

Taste?
Automatic.

Buckets?
Not yet. You'll have to settle for bottles.



Also In No Return Bottles

Gardener's Gold
NURSERY & SUPPLY

— CLARK COUNTY'S LARGEST —

Free Loan of Rollers & Spreaders With Your Purchase.

<ul style="list-style-type: none"> • SHRUBS • ROSES • LAWN SEED 	<ul style="list-style-type: none"> • POTTED PLANTS • TROPICAL PLANTS • BEDDING PLANTS • INSECTICIDES 	<ul style="list-style-type: none"> • SHADE TREES • FRUIT TREES • FERTILIZERS
--	--	---

"Quality Merchandise at Sensible Prices"

OPEN 364 DAYS A YEAR - 7 A.M. 'TIL DARK

642-3548

800 E. LAKE MEAD BLVD. - NORTH LAS VEGAS
ONE BLOCK WEST OF SALT LAKE HWY.