

NEW JUVENILE DETENTION & CHILD HAVEN COMPLEX Near Completed County Facility In Sharp Contrast To Old Juvenile Home

By John P. West



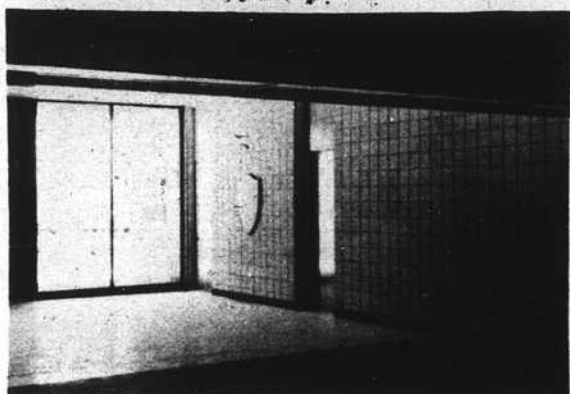
District Juvenile Court Judge William P. Compton and VOICE Managing Editor, John West, shake hands following legal proceedings of a typical day in Juvenile Court. Looking on is Robert "Moon" Mullen (left), Clark County's Chief Juvenile Probation Officer and Acting Director of Court Services.



A partial facade of old Juvenile Home gets rueful attention from Robert Mullen (l), John West, and newly appointed Ass't. Superintendent of Detention, Don Hampton (r). Old Juvenile Home located at 645' Shadow Lane is a box-shaped cinderlite block construction with barred windows. With a limited housing capacity of 24, the old home was often forced to shelter as many as 35 youngsters.



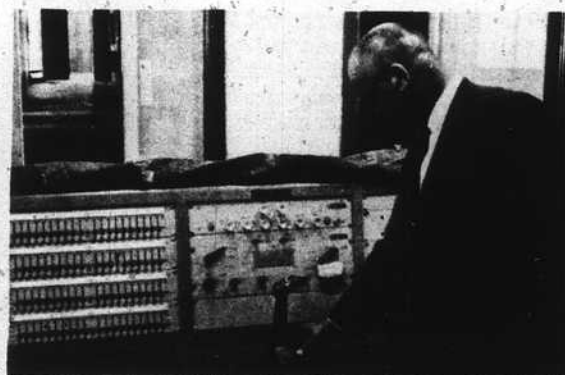
Standing at the end of one of the three wings of the new Juvenile Complex located at 3400 E. Bonanza with adequate accommodations for 45 are Mullen, Hampton, and former Ass't Superintendent of Detention, Robert Garn.



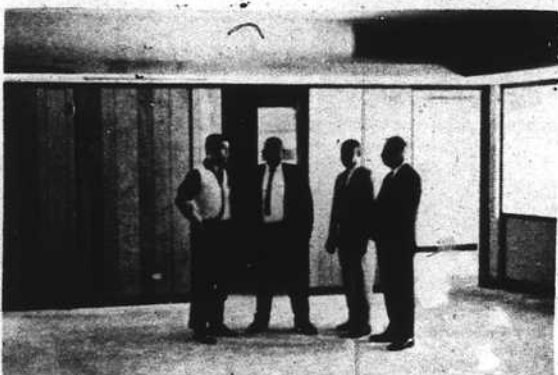
Entrance and waiting room of Administration Building of new Juvenile Complex. Approximately \$26,000 was spent by the County to furnish administrative office and court room. Court Room on the premises for Juvenile hearings is an innovation.



Continual senseless destruction of frame beds by delinquents, forced juvenile authorities to put mattresses on the floor.



Robert Garn inspects Central Control cubicle near detention quarters. Upper left hand corner of photo shows one of three wings which can be controlled simultaneously by anyone in cubicle.



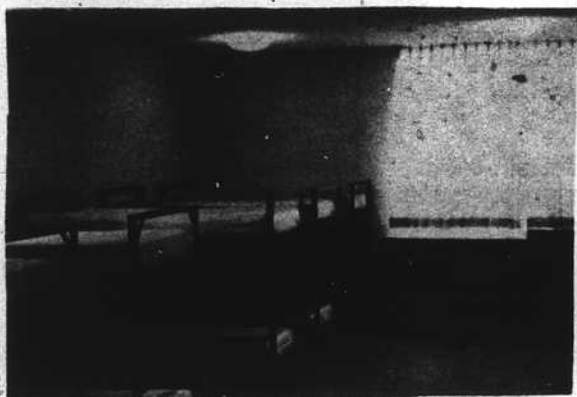
John West, Robert Mullen, Don Hampton, and Robert Garn discuss new furnishings and equipment to be installed in Administration Building.



Robert "Moon" Mullen and Don Hampton point out more results of delinquents' destructiveness. Here, windows broken by juvenile inmates, have been replaced with boards.



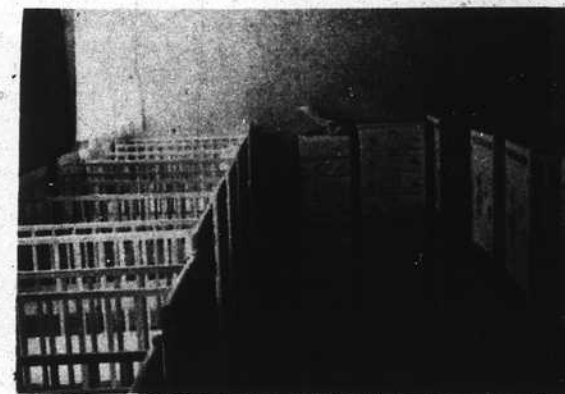
Robert Mullen, Don Hampton, John West, and Robert Garn inspect spacious kitchen facilities of new complex. Ultra modern kitchen with stainless steel, gas, electric, and steam operated equipment makes it possible to prepare 300 meals a day if necessary.



One of two dormitories for teen-agers at Child Haven portion of Complex. These Dorms will provide shelter and comfort for a total of 48 abandoned, neglected, dependent youngsters.



Day room of old Home on Shadow Lane illustrates again wanton destructiveness of juveniles.... Authorities trace this type of behavior to lack of parental guidance and training in homes of these unfortunate children.



Nursery for infants at Child Haven has a capacity for 24. Child Haven portion of new complex (for both infants and teen-agers) is already in operation. Entire Complex is scheduled to open before end of July.

IT'S VOTER REGISTRATION TIME