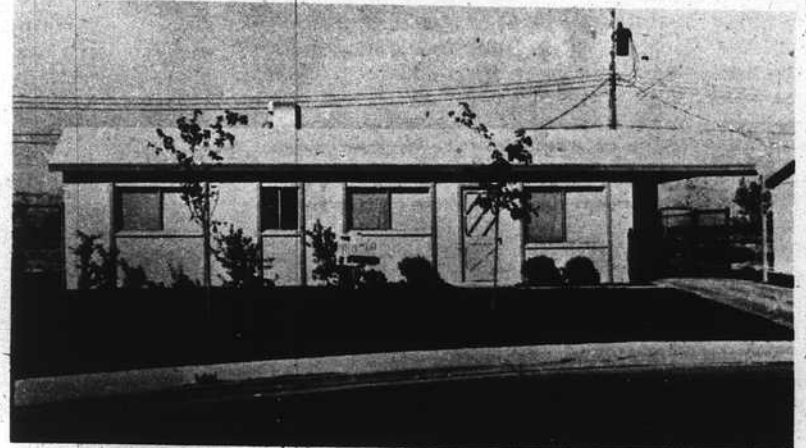
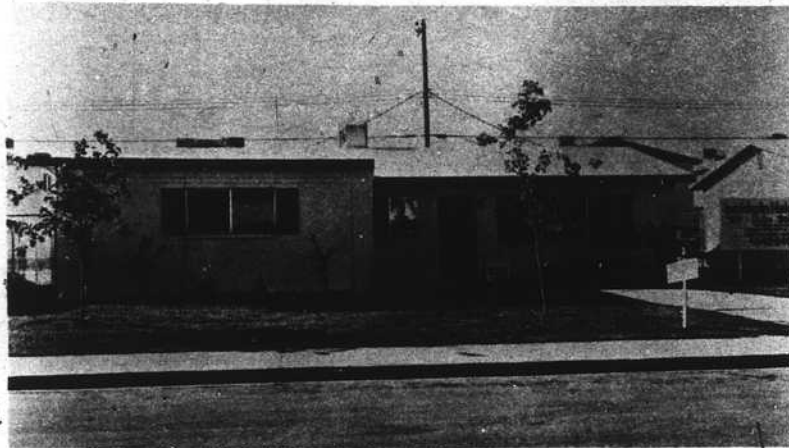


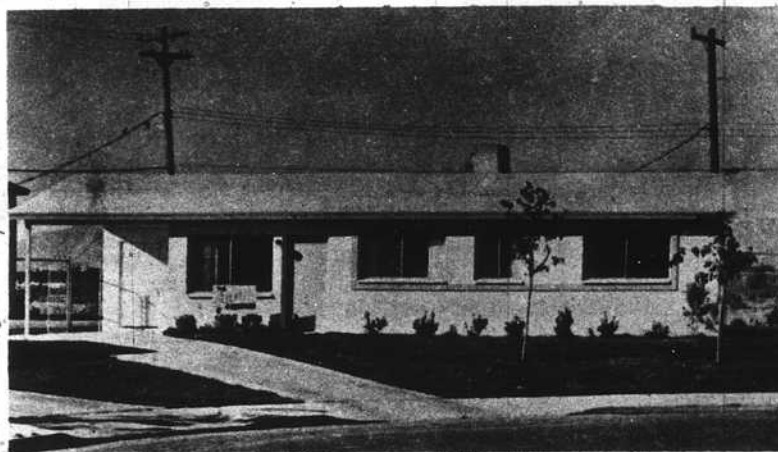
First Western Savings & Loan
**Now Gives You Your Choice
 Of Baldwin Homes.**



Baldwin Heights
 Models Located At 1904 Lawry
642-7477

Baldwin Estates
 Models Located At 1405 Helen
642-2651

**See Our
 Sales Agents**



**Come In
 Today**

Baldwin Village
 Models Located At 1801 McDonald
642-8233
 Spacious 2-3-4-5 Bedroom Homes

Monthly Payments
 plus Taxes and Insurance *as low as \$89*

Offices Open 9 a.m. - 9 p.m.

\$15

**Total
 Move In
 All Credit
 Accepted**

Features

- Block constructed Home
- 6 Ft. Block Wall Fence
- Installed Sprinkler System
- Professional Landscaping

**Models Open
 9 am
 to 9 pm**