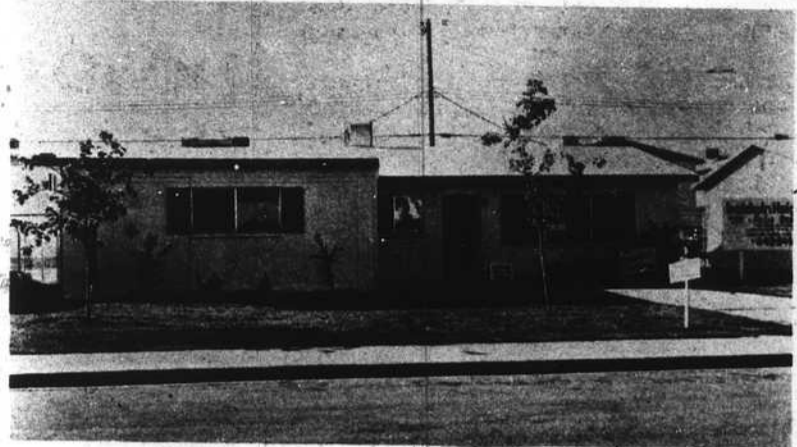
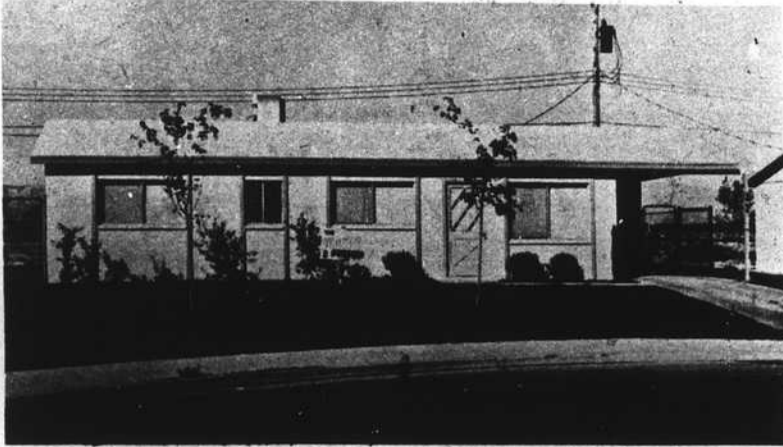


First Western Savings & Loan
**Now Gives You Your Choice
 Of Baldwin Homes.**



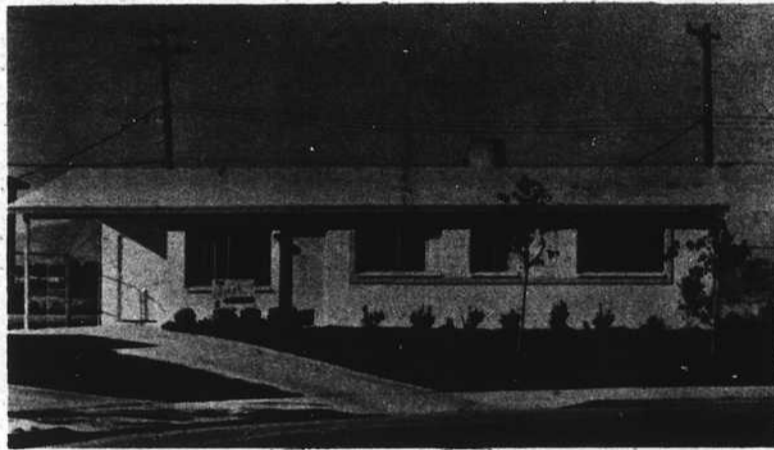
Baldwin Heights

**Models Located At 1904 Lawry
 642-7477**

Baldwin Estates

**Models Located At 1405 Helen
 642-2651**

**See Our
 Sales Agents**



**Come In
 Today**

Baldwin Village

**Models Located At 1801 McDonald
 642-8233**

Spacious 2-3-4-5 Bedroom Homes

Monthly Payments
 plus Taxes and Insurance *as low as \$89*

Offices Open 9 a.m. - 9 p.m.

\$15

**Total
 Move In
 All Credit
 Accepted**

Features

- Block constructed Home
- 6 Ft. Block Wall Fence
- Installed Sprinkler System
- Professional Landscaping

**Models Open
 9 am
 to 9 pm**