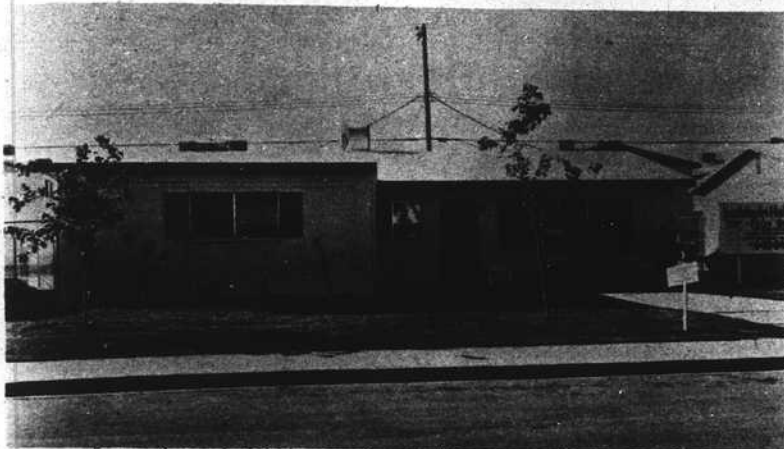
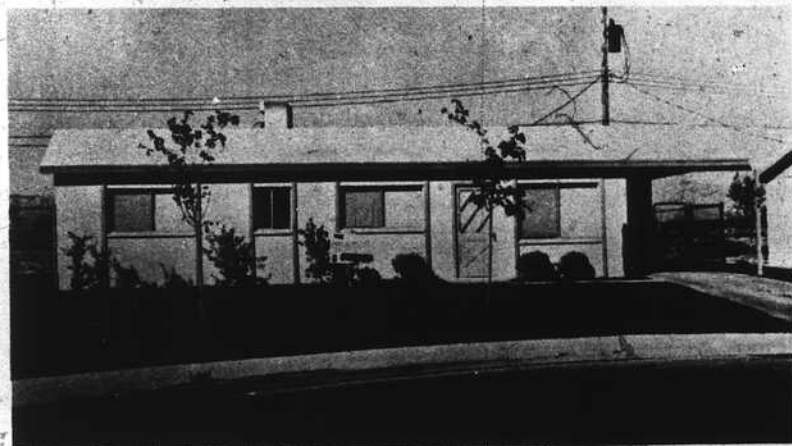


*First Western Savings & Loan*  
**Now Gives You Your Choice  
 Of Baldwin Homes.**

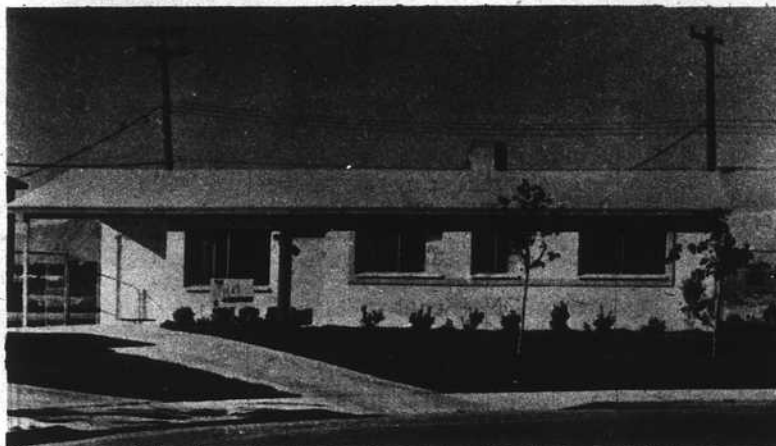


*Baldwin Heights*  
**Models Located At 1904 Lawry**



*Baldwin Estates*  
**Models Located At 1405 Helen**

**See Our  
 Sales Agents**



**Come In  
 Today**

*Baldwin Village*  
**Models Located At 1801 McDonald**

**Spacious 2-3-4-5 Bedroom Homes**

*Monthly Payments*  
 plus Taxes and Insurance *as low as \$89*

*Offices Open 9 a.m. - 9 p.m.*

**\$15**

**Total  
 Move In  
 All Credit  
 Accepted**

**Features**

- Block constructed Home
- 6 Ft. Block Wall Fence
- Installed Sprinkler System
- Professional Landscaping

**Models Open  
 9 am  
 to 9 pm**