

Barry Faces Rude Awakening in LA

LOS ANGELES--Sen. Barry Goldwater swept to victory in the California Republican primary of June 2 by overwhelming Gov. Nelson Rockefeller of New York in far-flung Los Angeles County. A survey conducted by Gladwin Hill of the New York Times Pacific Coast bureau indicates the Arizona solon is unlikely to do the same against President Lyndon Johnson in next week's general election.

And if Los Angeles County comprising some 40 per cent of California's vote goes Democratic, the same will probably be true of the state, which is pivotal in both Democratic and Republican victory calculations with its 40 electoral votes.

A groundswell of sentiment away from the Republican nominee is attested both by voter interviews and by registration figures.

Goldwater won California's important 86-vote delegation to the Republican National Convention by a statewide margin of 68,350 votes in the primary. His margin in Los Angeles County alone was 167,196.

However, this impressive showing is somewhat misleading in projecting Los Angeles as a bastion of Goldwater strength. This was true only in the intraparty primary.

On the two-party basis that will apply next week, Los Angeles is a formidable and growing concentration of Goldwater's opposition.

Republicans are outnumbered 3 to 2 by Democrats. This roughly parallels the 7 to 5 ratio by which the Democrats predominate in the state. Moreover, the Democratic margin in Los Angeles and environs has increased substantially since June, according to the final registration.

FOR THE PRIMARY there were 1,562,967 eligible Democrats to 1,095,067 Republicans in the county. Since then, the Democrats have gained 265,439 adherents, an increase of 14.5 per cent, while the Republicans gained 107,065, an increase of 9 per cent.

Of Los Angeles County's full registration of 3,137,194, including nonpartisan and minor party adherents, the Democrats now have 58.28 per cent and the Republicans 38.32 per cent.

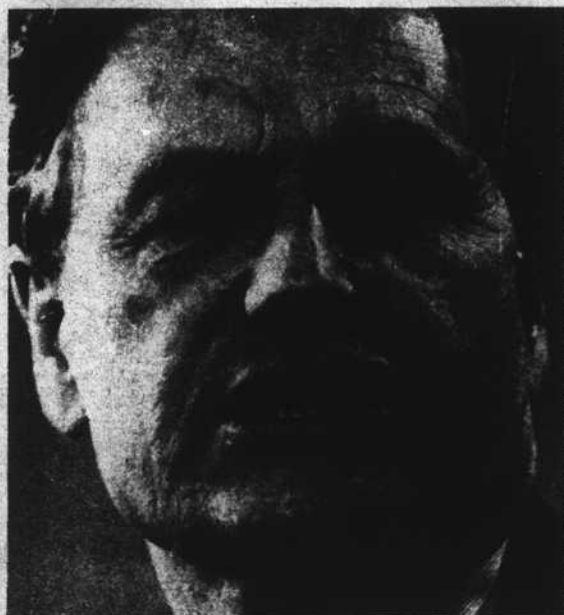
What they really think about their candidate.



WILLIAM SCRANTON, REPUBLICAN GOVERNOR OF PENNSYLVANIA:
"Goldwaterism has come to stand for a whole crazy-quilt collection of absurd and dangerous positions that would be soundly repudiated by the American people in November."
—July 12, 1964



GEORGE ROMNEY, REPUBLICAN GOVERNOR OF MICHIGAN:
"(Goldwater's nomination would lead to the) suicidal destruction of the Republican party."
—June 7, 1964



NELSON ROCKEFELLER, REPUBLICAN GOVERNOR OF NEW YORK:
"(Goldwater's) positions can spell disaster for the party and for the country."
—June 11, 1964



HENRY CABOT LODGE, REPUBLICAN VICE-PRESIDENTIAL NOMINEE, 1960:
"I think a man who digs in with his heels against a change, who wants to set back the clock, isn't a conservative. I think he's a reactionary."
—June 29, 1964

ELECT

D

I

C

K

R

O

N

Z

O

N

E

REGENT