

Windsor Park offers new beauty, strength and durability, achieved through a new system of home construction. The charm, warmth and liveability of Windsor Park reflects the tastefully designed interiors--rich textured wall finishes--spacious rooms. You have the opportunity of selecting from three basic plans with a choice of eight variations for your home in Windsor Park to delight the most particular family.



**ANNOUNCING**

**Windsor Park**

Quality  
Built  
by

WINDSOR PARK  
ENTERPRISES  
INC.

**COMPLETE 3 and 4  
BEDROOM, 2 BATH HOMES  
ONE PRICE \$14,700**

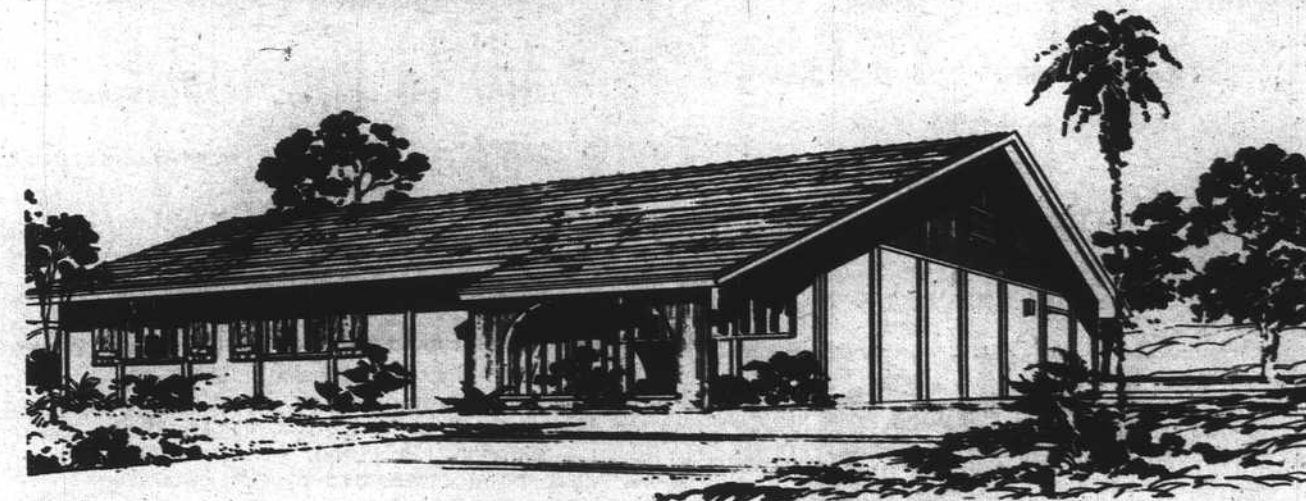
**TOTAL MONTHLY PAYMENTS \$104<sup>00</sup>**

INCLUDES PRINCIPAL, INTEREST, AND APPROXIMATE TAXES

**AND ALL THESE FEATURES:**

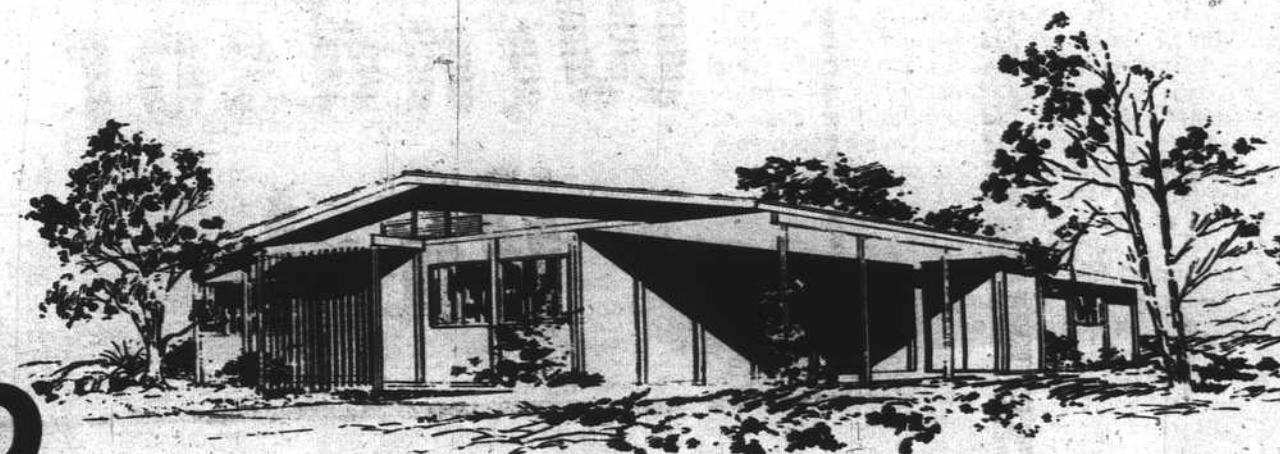
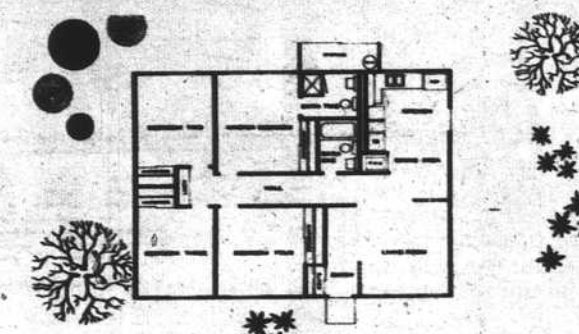
- LANDSCAPED
- GLASS LINED GAS WATER HEATER
- SUPERIOR INSULATION IN ALL INTERIOR AND EXTERIOR WALLS
- BUG AND TERMITE RESISTANT
- TROPICAL OR SHINGLE ROOFS
- AIR CONDITIONED
- LESS WAITING TIME TO MOVE IN
- HIGHEST QUALITY CONSTRUCTION TO FHA STANDARDS
- MINIMUM MAINTENANCE
- METAL DOOR JAMBS
- NOBLE CRAFT CABINETS

**North on Highland to Carey  
Left to Model Homes WINDSOR PARK**



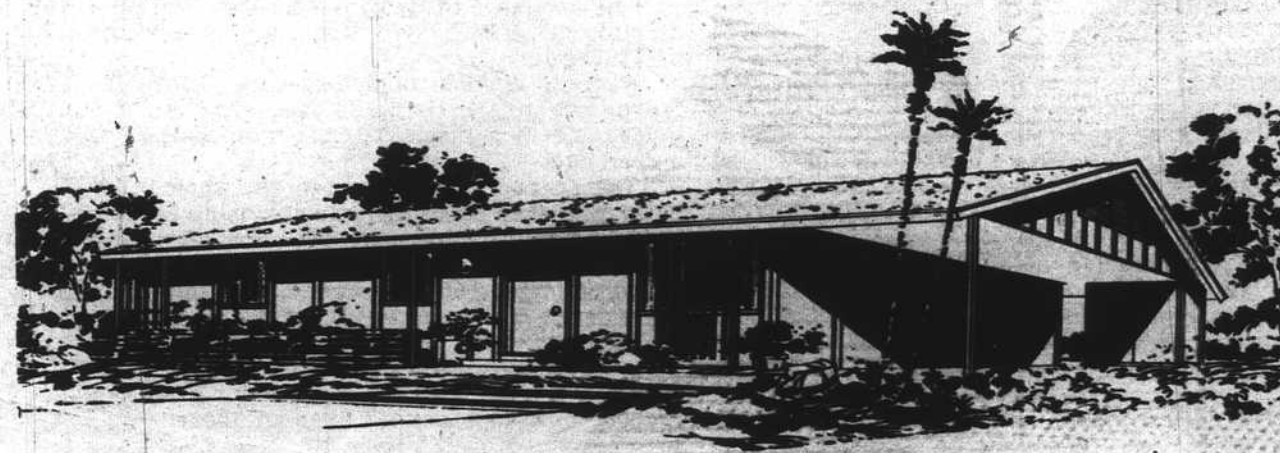
**THE CLARENCE Model 400**

Four large bedrooms plus two baths make this model one of the most popular at Windsor Park Homes. The living room adjacent to the dining area and kitchen is designed for entertaining and family activities.



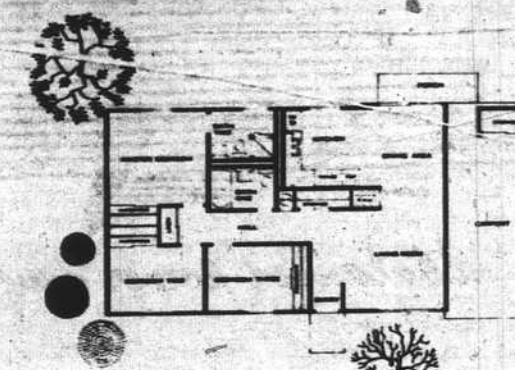
**THE MARLBORO Model 350**

A charming 3-bedroom, 2-bath model created to make living most comfortable for the growing family. Carport and refrigerated air conditioning top-off this model's long list of features.



**THE KENT Model 300**

This outstanding 3-bedroom, 2-bath model features a carport with ample storage-space. Balanced power, refrigerated air conditioning in the Kent will make your family comfortable 365 days of the year.



*a balanced power development*

