

News of the World in Pictures



SURVEY WAR DAMAGE—Belgian priests cross a bridge destroyed by German demolition squads before retreating from the city of Namur. A U. S. Army engineer, directly behind the priests, inspects the damage before beginning the repair job. Pontoon bridges were used by the Allies.



ALWAYS PREPARED—Clad in his asbestos suit, "Hot Papa," as the fire-fighting aircrewman who stand guard during landings are known, is always ready for the worst when planes roar in to carriers. His quick action in case the plane catches fire may save the pilot's life and serious damage to the craft. This is an official United States Navy photo.



AN LST YIELDS UP ITS WARLIKE CARGO—Occasionally in this war the Allies have encountered martial lagniappe—occupying territory at little or no cost. One of these incidents was the seizure of Sansapor in Dutch New Guinea, where this Navy photo was made.



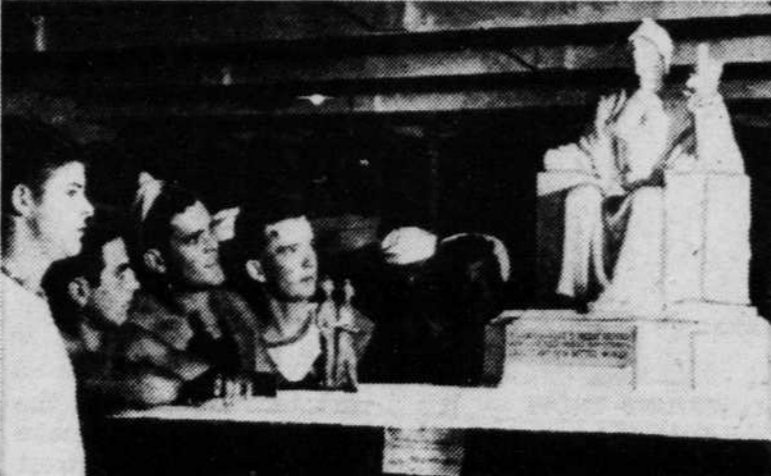
"AFTER FIVE"—For that late afternoon or early evening gown, we suggest Leslie Brooks "ballet"-length dress of lace and marquisette.



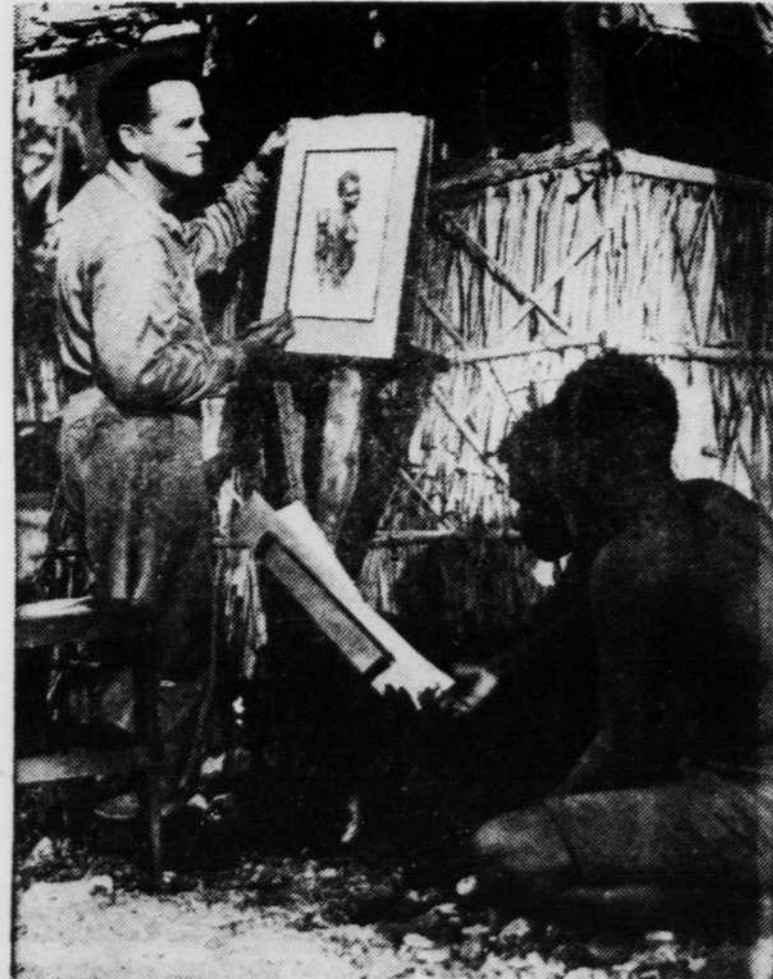
PLACING HIS EXHIBIT of a plaster head upon a shelf at the Solomons show is Cpl. Gordon Malmel of Albany, N. Y.

G. I. ART IN THE JUNGLES

THE American soldier, sailor and marine in the Solomons is a fighting man, but he hasn't forgotten his interest in things artistic. That was revealed on Guadalcanal when 1,500 separate pieces of art and craftsmanship were entered by the fighting man in the Solomon Islands art show. The work was not primarily war art and, done during off-duty time, the entries came from Bougainville, Green Island, Vella Lavella, New Georgia, the Russell Islands as well as Guadalcanal itself. Lt. Zearl E. Lindsay was director of the show. OWI photos from the United States Army Air Corps.



"STRANGER, HERE IS SACRED GROUND, Men Have Died Where You Stand, Expectant of a Better World," read the inscription on a model of a proposed Guadalcanal war memorial, Sgt. William M. Simpson's exhibit entry.



"BOUGAINVILLE MARY AND CHILD" is the name of the sketch being finished by Pfc. Lewis W. Bost of Charlotte, N. C.



A NEW ZEALAND soldier, L. A. C. Duncan McPhee, used the banks of the now peaceful Tenaru river on Guadalcanal as a background for his water color paintings.



FOUR STAR INVADER—Back from 23 months in the Pacific theater and from four major invasions, Coastguardman John B. Garrett, yeoman first class, wears the new naval amphibious forces insignia over his rating on the left sleeve. The patch of gold on a scarlet background shows an American eagle rampant on a fluked anchor and gripping a sub-machine gun in its talons. It's Spar Virginia Dunn admiring Garrett's campaign ribbons and four battle stars.



QUONSET 'CATHEDRAL'—Navy officers and enlisted men wait for service to begin in the church on Eniwetok in the Marshalls group. Religious rites were first held in a tent on Eniwetok, but now they have a "quonset period" chapel.



QOMPH IN CHINESE—During a performance in Chungking, China, of the Ann Sheridan troupe, on tour in the China-Burma-India theater, the screen actress is seen between numbers in a dressing room, helping Mary Landa.



CAMERA DELUXE—This streamline version of the scientific laboratory's precision tool—the cathode ray oscillograph—is now made for war industries. An engineer is shown above as he checks the film pack in the device, which uses a thin stream of electrons to record electrical phenomena.