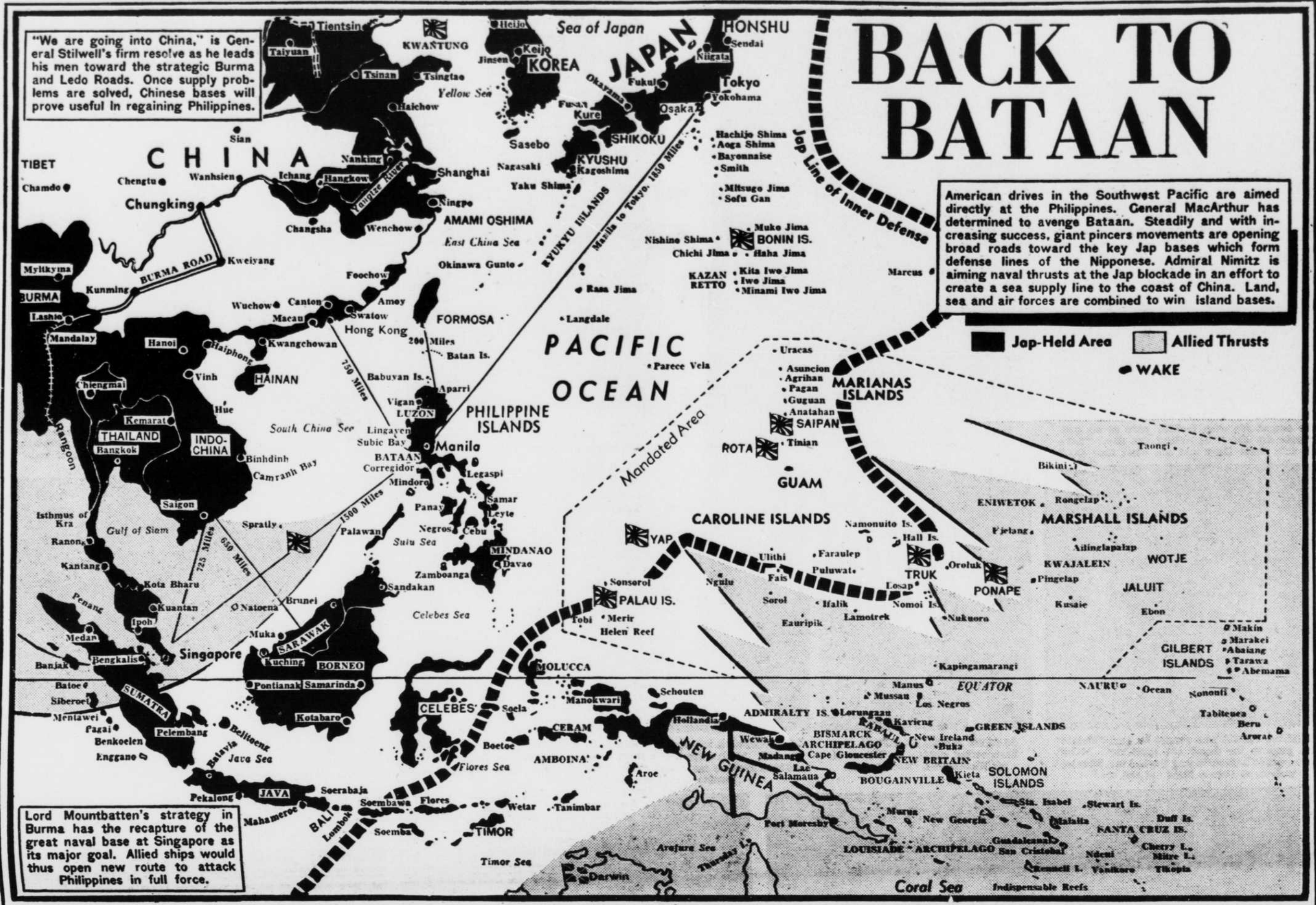


Pacific Spearheads Aimed at the Philippines



They're Ready to Slug It Out With the Japs!



ADMIRAL CHESTER W. NIMITZ . . . Commander-in-chief, Pacific fleet. . . He dared the Jap navy to come out and fight



LORD LOUIS MOUNTBATTEN . . . Supreme Allied commander in Southeast Asia.

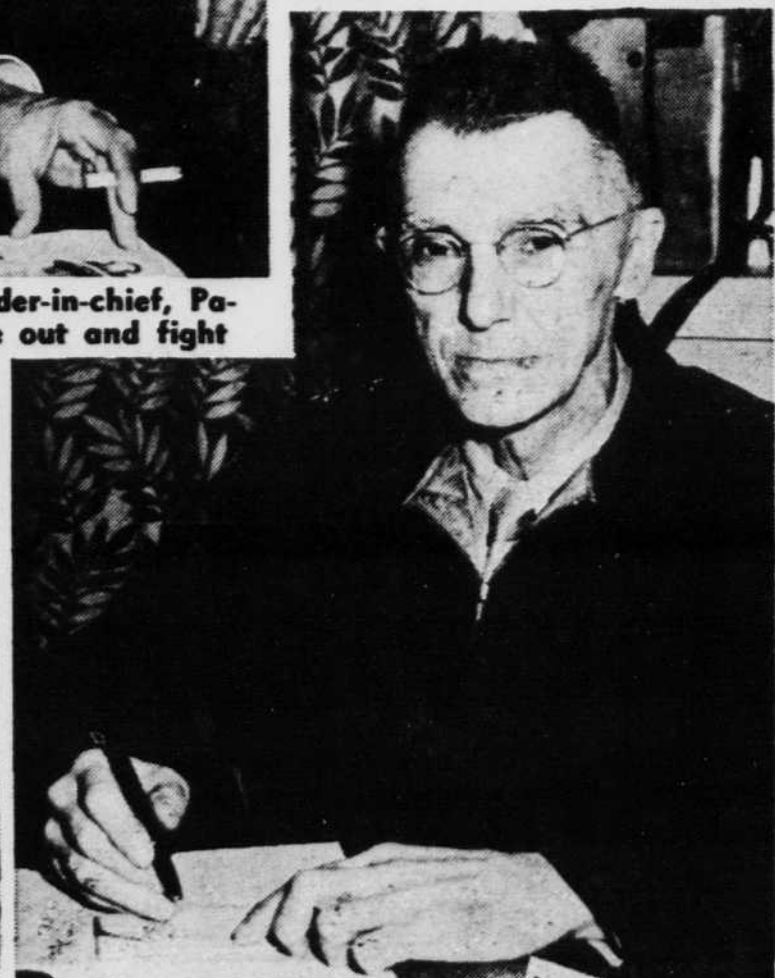
WHEN the final chapter of the Philippines' story is completed, four men doubtless will write "finis" to the bloody pages of Jap occupation.

Gen Douglas MacArthur has sworn to go back to Bataan. His drives into the Marshalls and Admiralties indicate that he is on his way.

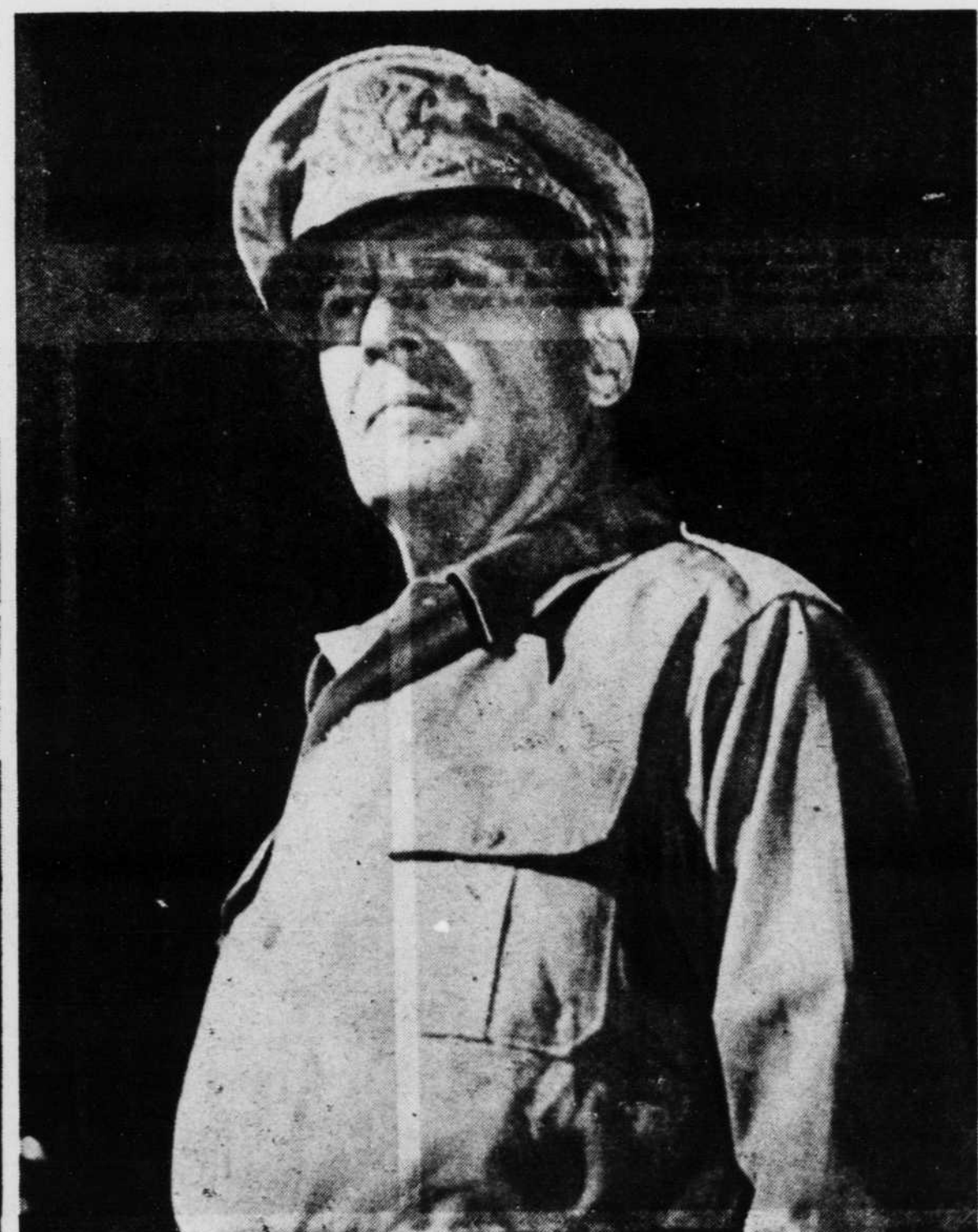
Lord Louis Mountbatten plans the moves which will try to regain Singapore and provide bases for operations against the Nipponese.

Admiral Chester W. Nimitz's goal is an American supply line to the China coast, establishing bases for recapture of the Philippines and for drives against Tokyo.

Lieut.-Gen. Joseph Stilwell's attacks in Burma are aimed toward inland bases in China from which bombers could hit Bataan.



LIEUT.-GEN. JOSEPH STILWELL . . . Commands forces in China, Burma, India theater of war.



GEN. DOUGLAS MACARTHUR . . . Commander of Allied forces in the South Pacific. . . No brass hat, he has fought along side of his men.