

Charles M. Owen

(Continued from Page One)

made at Woodlawn cemetery in this city.

The services were conducted by Rev. A. L. Schrock of the Episcopal church. Pallbearers were J. W. Wilson, Frank Buol, Elmer Mikkelsen, Ed Von Tobel, Fred Callihan, and George Craig. Special music was arranged by Mrs. Leroy Whipple. As part of the services the following poem was read:

PADRE OF THE ROSES Dedicated to the Memory of C. M. Owen

In spring the tender blossoms
Send forth their fragrance rare,
In memory of the master hand
Who tended them with care;
For where once grew but sage-
brush
Now sweet roses bloom
To brighten many a mansion
And many a cheerless room.

He shared with all his blossoms,
Asking on recompense,
And the roses grew on the arbor
O'er all the trellis and fence.
With loving hands he tilled them;
They seemed to understand
The vision of the gardener
In that sagebrush cover'd land.

Yes, the Padre of the Roses,
Gone now to his long rest —
I know he'll be tilling the roses
In the heavenly home of the blest.
He'll be sharing those sweet
blossoms

In the land that's over there —
Roses in God's great garden
Of flowers with fragrance rare.
— WILLIAM BROTHERS.
(Socks)

Rotarians Hear

(Continued from Page One)

the World war."

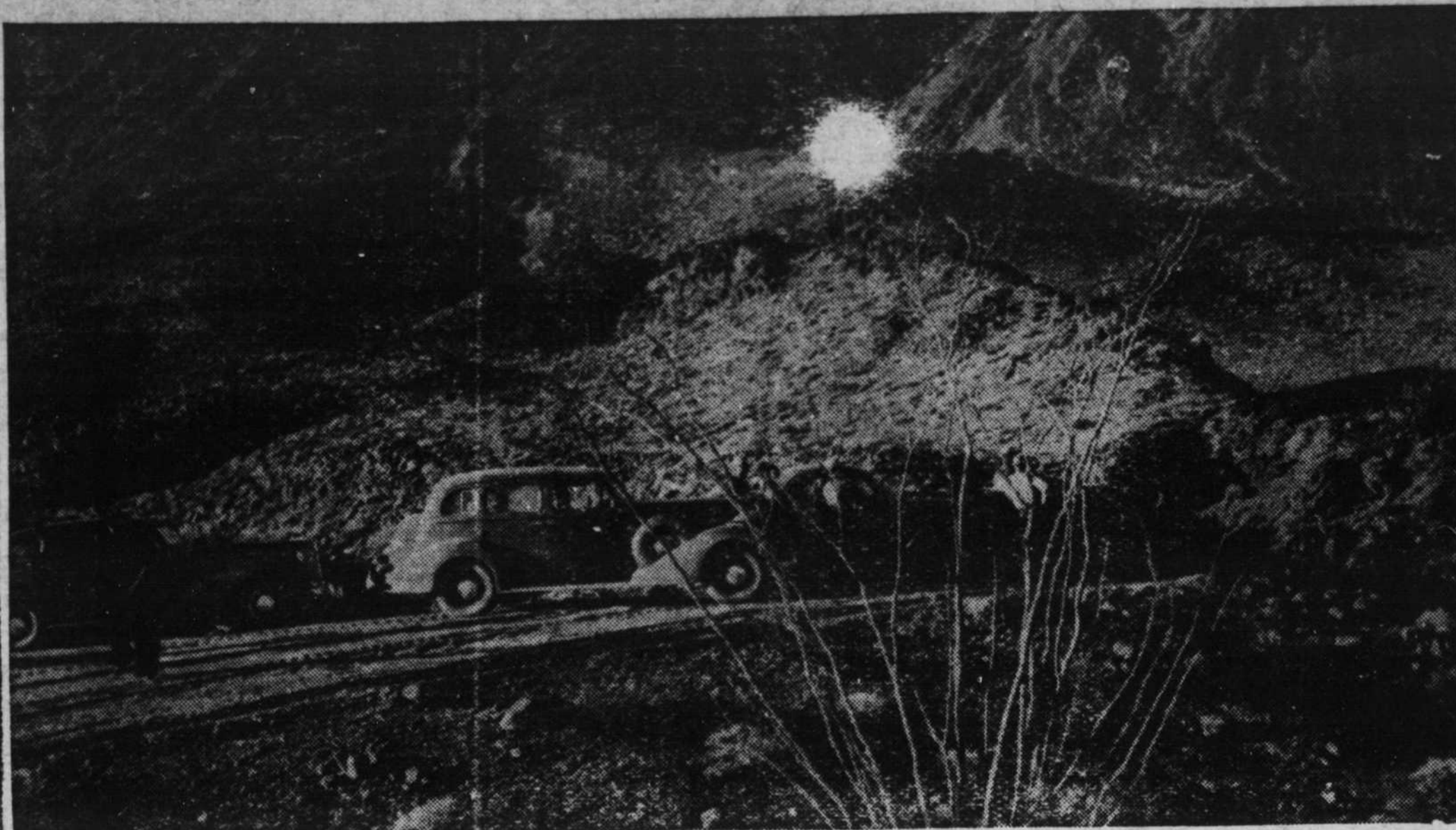
Taking as his text what he declared was the first question asked by man, "Am I my brother's keeper?", the speaker entered upon a most interesting discussion of conditions in the Orient where China is being conquered by Japan in the forwarding of the latter nation's ambitions for world domination. The talk was illustrated by maps drawn by the speaker and was lightened by the recounting of many interesting experiences he had during his stay in China and Japan in 1935.

China the speaker described as one of the nations which answered "no" to the question "Am I my brother's keeper?" and which gave nothing of its art and culture to the outside world. It enclosed itself within walls which kept its own within and forbade the outside world to enter. In its veneration of its dead ancestors, China has gradually given up three-eighths of its area to burial places and reduced by that much the productive area of the land, the speaker said.

The distinguished guest spoke before the high school on Thursday morning and was received by the young folks with great interest.

Music for the meeting consisted of several fine selections by the quartette made up of Roscoe and Henry Hampton, Eldon Larson, and Fred Dexter, with Mrs. Larson at the piano as accompanist.

ON INTERNATIONAL FOUR STATES HIGHWAY



Cars at Graham Pass in the Chuckawalla mountains, near Imperial-Riverside county line in Southern California. Completion of this segment of highway between Niland and Blythe, Calif., means that the last unconstructed stretch of the International Four States highway between the Canadian boundary and the Mexican border has been built. The route through Graham Pass, built by B. M. Graham, county commissioner of Imperial county, will save a 50-mile longer detour. The entire stretch in California will be finished and opened to general travel by the end of the present year. — Photo by Robert Hays, National Secretary of International Four States Highway Association.

LITTLE MOMENTS IN BIG LIVES

Kessler



NORMAN SWEETSER, ANNOUNCER AND MANAGER OF THE TIMES SQUARE STUDIO, OF THE N. B. C., STARTED PUMPING THE CHURCH ORGAN FOR TEN CENTS AN HOUR IN DERBY LINE, VERMONT.