

"Star Finder" Presents New Screen Talent

Producer - Director Wesley Ruggles likes to be called "the greatest gambler in Hollywood"!

Since he gambles on star talent and not on slot machines or race horses, he is not ashamed of his title. Having discovered as many leading film personalities as any man in the motion picture industry, Ruggles introduces his two latest "finds," Ellen Drew and Donald O'Connor, in the new Bing Crosby-Fred MacMurray comedy, "Sing You Sinners," which comes next Sunday to the El Portal theatre.

Miss Drew is known as the "candy store Cinderella" because of her discovery by one of Ruggles' assistants in a Los Angeles ice cream parlor and her rapid rise to stardom. Proud to be known as the "typical American working girl," she got her early training in Chicago department stores and now, as MacMurray's screen sweetheart, is the envy of half of the stars in Hollywood.

Donald was discovered by Ruggles himself while performing at a Los Angeles benefit a year ago. A vaudeville and circus trouper since his earliest childhood, the youngster can dance, act, sing, play an accordion and ride a race horse with equal skill, all of which he does in the Crosby comedy.

A list of Ruggles' past discoveries reads like a roster of Hollywood's leading stars. He gave MacMurray his first chance when he starred him opposite Claudette Colbert in "The Gilded Lily," and Irene Dunne hers in the unforgettable "Cimarron." Clark Gable and Carole Lombard received their first big comedy roles from Ruggles in "No Man of Her Own," which made them top-notch stars almost overnight. He uncovered the talents of Janet Gaynor long before anyone else in film-dom took notice of the vivacious little girl and featured her in a collegiate series.

Great Ore Body In Mason Valley

YERINGTON, Nev. — A copper-gold-silver deposit of such vast magnitude that indications point to another bonanza copper mine in the

Yerington district of Nevada was recently discovered by George T. Williams and Morris D. Cowen, both residents of Yerington. The property is situated in the Mason valley mining district and on the same mineral belt of the famous copper mines which were operated many years ago.

"This vast deposit of high-grade copper ores has been opened to a width of approximately 125 feet," says Mr. Cowen. "On the north end the ore body has been trenched over a width of 40 feet; 70 feet south the ore body was uncovered but a foot to two inches from grass roots and trenched over a width of 40 feet.

Ten feet south of this open cut the same ore body was uncovered, making a total width at this writing of approximately 130 feet. The walls have not been contacted as yet.

"This vast deposit of high-grade copper ore has been clearly traced on the surface for a distance of approximately 1200 feet. At this end the copper values also indicate high-grade ores; the deposit continuing into a mountain. Backs of approximately 300 feet will be had.

"The copper values are associated with a brassy, yellow sulphide, chalcopyrites and silicate. At a depth of but 10 feet the brassy, yellow sulphides become very heavy. A large

number of samples taken across the entire widths gave a lowest assay of 7.5 per cent copper per ton. Some of this ore will assay to 25 per cent copper per ton. The ore also averages \$3.50 per ton in silver and gold.

"Arrangements are being made for the construction of a road for a distance of a half-mile and the ore will be mined with a steam shovel. It is expected that about 250 tons will be shipped daily to the smelters at Salt Lake City. There are many high-grade offshoots from the main ore body. The property covers an area of 180 acres. Development work is now being carried on."

Order Your Christmas Cards Now

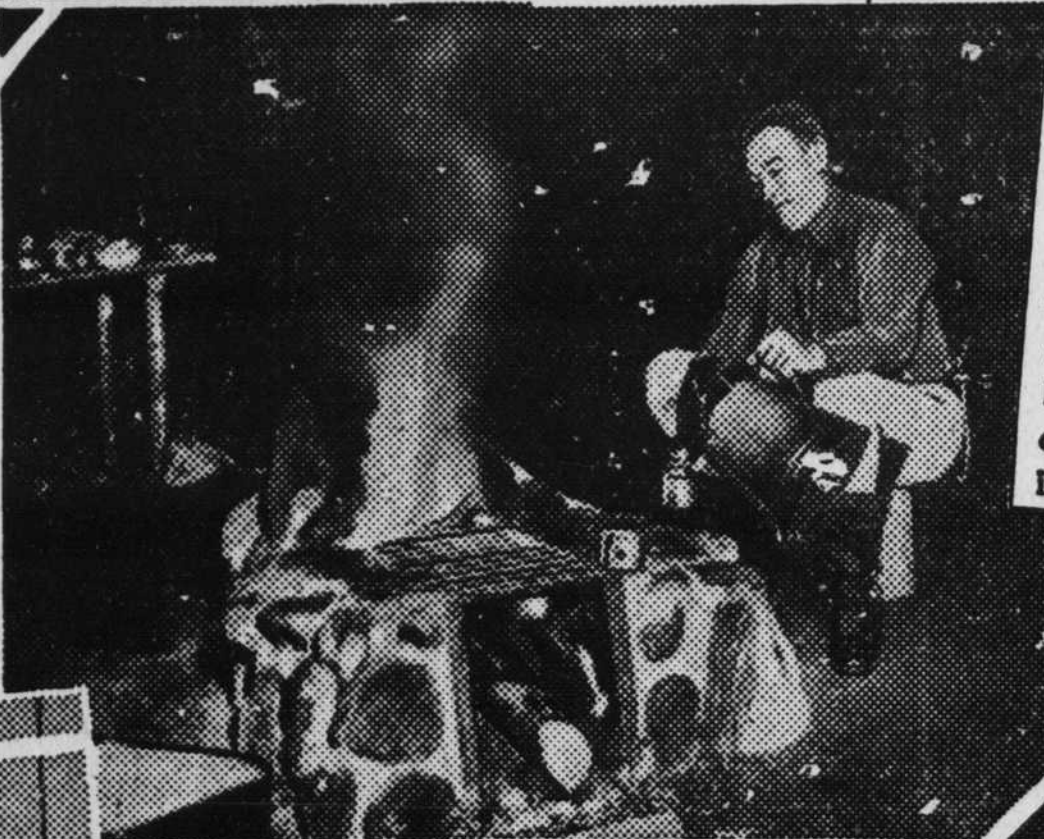
In The WEEK'S NEWS



AMBASSADORS CONFER WITH PRESIDENT—William Phillips (left) Ambassador to Italy and Hugh Wilson (right), Ambassador to Germany as they conferred with President Franklin D. Roosevelt at Warm Springs on the persecution of minority groups in Germany and Italy.



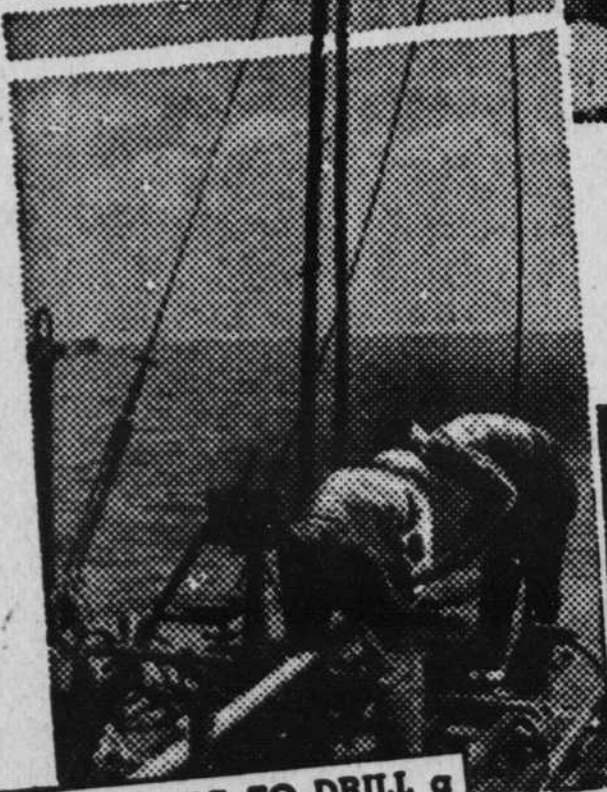
HAILS INCOME PLAN—Lloyd A. Kurtz of Hilliards Grocery, Flint, Michigan, tells Miles Hudson, General Motors employee for 18 years, that he likes the stabilized income plan recently announced by the company for all hourly wage employees because it also helps to stabilize the income of the merchants. Employees in 39 communities are affected.



GOVERNOR ROUGHS IT—Governor Gordon Browning of Tennessee did not bag a deer during the annual hunt in the Pisgah Forest, but he could and did make coffee for his party. Here he samples a cup of the steaming brew.



ORIGINATED HISTORIC ALL-AMERICA — Walter Camp, shown as he looked when he starred for Yale in 1874. He started annual All-America football selections in Collier's Weekly in 1889. The 1938 team will be announced in the issue on the stands December 9th.



PREPARING TO DRILL a seismographic shot hole into the floor of the ocean during the search for likely oil-bearing formations which The Atlantic Refining Company is conducting in the tidal waters of Texas and Louisiana. Portable drilling rigs and seismic recording devices are floated on barges.



A SENATOR FOR SIX WEEKS—Senator Gladys Pyle, of South Dakota, elected to fill the unexpired term of the late Peter Norbeck, affixes her name to the door of her Senate office. Her term expires in six weeks and she will return to her home without having answered a roll call.

CUT OUT CUTTING IN

before YOU KILL somebody

National Safety Council