

County Election

(Continued from Page One)

Douglas—George Hauuman (R).
 Elko—M. E. McCuiston (D), J. F. McElroy (D), Morley Murphy (R), W. A. Reinken (D);
 Esmeralda—M. E. Fee (I).
 Eureka—Howard L. Conine (D).
 Humboldt—Irvin Case (D), Lewis L. Sowers (D).
 Lander—Charles L. Caldwell (I), or Doug H. Tandy (I).
 Lincoln—Henry S. Coleman (D), Andy J. Richards (D), Jerry Thompson (I).
 Lyon—Virgin Bernard (R), Charles V. Williams (R).
 Mineral—H. E. Springer (D).
 Nye—LeRoy F. David (D), R.R. Germain (D), William Kennett (D).
 Ormsby—Peter A. Amodel (R).
 Pershing—F. S. Talcott (I).
 Storey—Thomas Lynch (D).
 White Pine—A. C. Barf (D), Joe S. Cooper (D), William Fisher (D), Charles H. Russell (R).
 Washoe—Reno district — Ernest Brooks (R), Fred J. Brown (R), Peter A. Burke (D), John W. Curtis (D), John Davidson (R), Frandsen Loomis (R), Sparks district — Carl Shelly (R), Robins Dewey Sampson (D).

The local Clark County vote for all offices follows. This total may change slightly when the count is canvassed by the county commissioners at their next meeting.

U. S. Senate	
McCarran	4335
Oddie	1598
Congress	
Scrugham	4792
Stewart	989
Governor	
Carville	4694
Fulton	1208
Lieutenant-Governor	
McNamee	3013
Sullivan	2841
Secretary of State	
McEachin	4298
Yeakey	1222
State Treasurer	
Ducker	2463
Franks	2711
State Controller	
Schmidt	4050
Stinson	1683
Surveyor General	
Lotz	1184
McLeod	4244
Attorney General	
Mashburn	4123
Smith	1475
Superintendent Public Instruction	
Bray	2357
Sledge	3177
Clerk Supreme Court	
Brodigan	3780
Stewart	1631
Mine Inspector	
Huber	1765
Murphy	2361
U. N. Regent	
Wardin	3156
Wingfield	2223
State Senate	
Arnold	2901
Grant	2838
Assembly	
Hazard	4796
Sloan	4607
Carroll	4483
Bunker	4287
Campbell	2797
Sheriff	
Hardy	2162
Ward	3738
District Attorney	
Foley	2562
Wiley	3256
County Commissioner	
Davison	3574
Johndahl	1860

Fallon-Vegas Tilt Saturday

Next Saturday Vegas High will travel to Fallon for their annual game. Fallon is given the odds over Vegas. Should Vegas defeat Fallon, then the local eleven will play Reno for the state championship. Reno has defeated Fallon and in case the Vegas team is defeated, Reno will then become the state's leading high school team for the year.

A large delegation of Vegas fans accompany the team to Fallon for the game.

JUST FOOLISHNESS

A bumper crop is predicted, and there is the prospect of longer bread lines. Figure it out how you will, "it don't make much sense." —St. Louis Post-Dispatch.

County Commissioner	
Jones	1994
Stocker	3753
County Surveyor	
McWilliams	2156
Pearson	3286
Public Administrator	
Beam	2444
Gallagher	3038
School Board	
Dawson	1819
Smith	2610
Las Vegas Justice of Peace	
Earl	1425
Marshall	2558
Las Vegas Constable	
Lawrence	2020
Pinjuv	1832

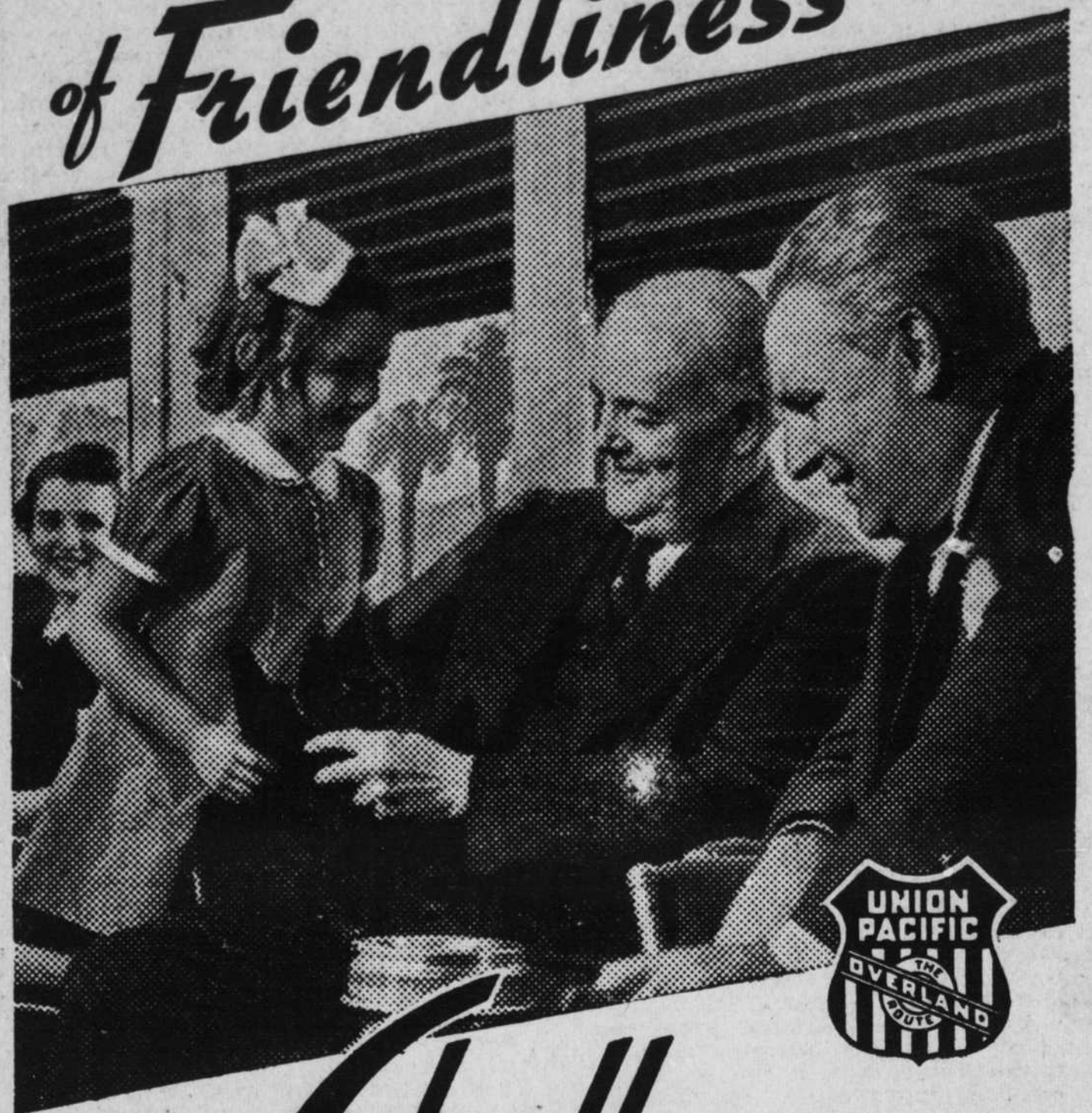
Results in Las Vegas city in several of the interesting contests, were as follows:

U. S. Senate	
McCarran	2544
Oddie	1598
Congress	
Scrugham	2844
Stewart	690
Governor	
Carville	2813
Fulton	806
Lieutenant-Governor	
McNamee	1930
Sullivan	1552
Superintendent Public Instruction	
Bray	1303
Sledge	3177
State Senator	
Arnold	1803
Grant	1711
Assembly	
Hazard	2919
Sloan	2790
Carroll	2778
Bunker	2498
Campbell	1841
Sheriff	
Hardy	1067
Ward	2557
District Attorney	
Foley	1724
Wiley	1820
County Commissioner	
Davison	2134
Johndahl	1193
County Commissioner	
Jones	1123
Stocker	2375

The county total for the two questions submitted on the ballot are as follows:

Question No. 1	
Yes	3141
No	1090
Question No. 2	
Yes	2343
No	1692

YOU'LL FIND A SPIRIT of Friendliness



ON THE

Challenger

"EVERYBODY'S LIMITED"

You will find a lot of smiling, friendly fellow-passengers on the Challenger...people who are thoroughly enjoying their trip and the outstanding service they are getting at such small expense.

They enjoy the Challenger innovations...new-type coaches with deep-cushioned, reclining seats...soft blue night lights...free pillows and porter service...Registered Nurse-Stewardess...and the satisfying meals all the way to Chicago for \$2.05.

And, on the Challenger there is a big initial saving in railroad fare...only \$39.50 to Chicago in comfortable coaches —slightly more in Sleeping Cars with berth fares only about one-half the Standard Pullman fares.

AMERICA'S BIGGEST TRAVEL BARGAIN

OTHER FINE UNION PACIFIC TRAINS EAST:—Streamliner "City of Los Angeles" (every third day) 39¼ hours to Chicago—Los Angeles Limited, daily all-Pullman Train, No Extra Fare—Pacific Limited, morning departure, only 2 nights to Chicago.

VISIT SUN VALLEY, Idaho, for an unusual winter vacation. Every winter sport under a "Summer Sun."

For Complete Information
STEPHEN GIRARD, Passenger Representative, Las Vegas, Nev.

THE PROGRESSIVE

UNION PACIFIC

ROAD OF THE STREAMLINERS AND THE CHALLENGERS

AMERICA'S LEADER AT 4 for 10¢

PROBAK BLADES