

POLITICAL CARDS

GENE WARD

(Incumbent)
REPUBLICAN
— for —
Sheriff

ELECT

HAROLD J. STOCKER

DEMOCRAT
County Commissioner
"A Mining Man for a Mining County"

E. P. "Ted" CARVILLE

DEMOCRAT
For
GOVERNOR

THOMAS M. CARROLL

DEMOCRAT
For
ASSEMBLYMAN

BERKELEY L. BUNKER

DEMOCRAT
For Re-election as
ASSEMBLYMAN

ELECT . . . Democratic Candidate for
Election November 8, 1938

ARCHIE C. GRANT

State Senator

RE-ELECT . . .

E. F. DAVISON

County Commissioner

(Long Term)
General Election, November 8

C. H. SLOAN

(DEMOCRAT)
For State Assembly

General Election, November 8

Try Las Vegas Age Job Department

FORMER SENATOR

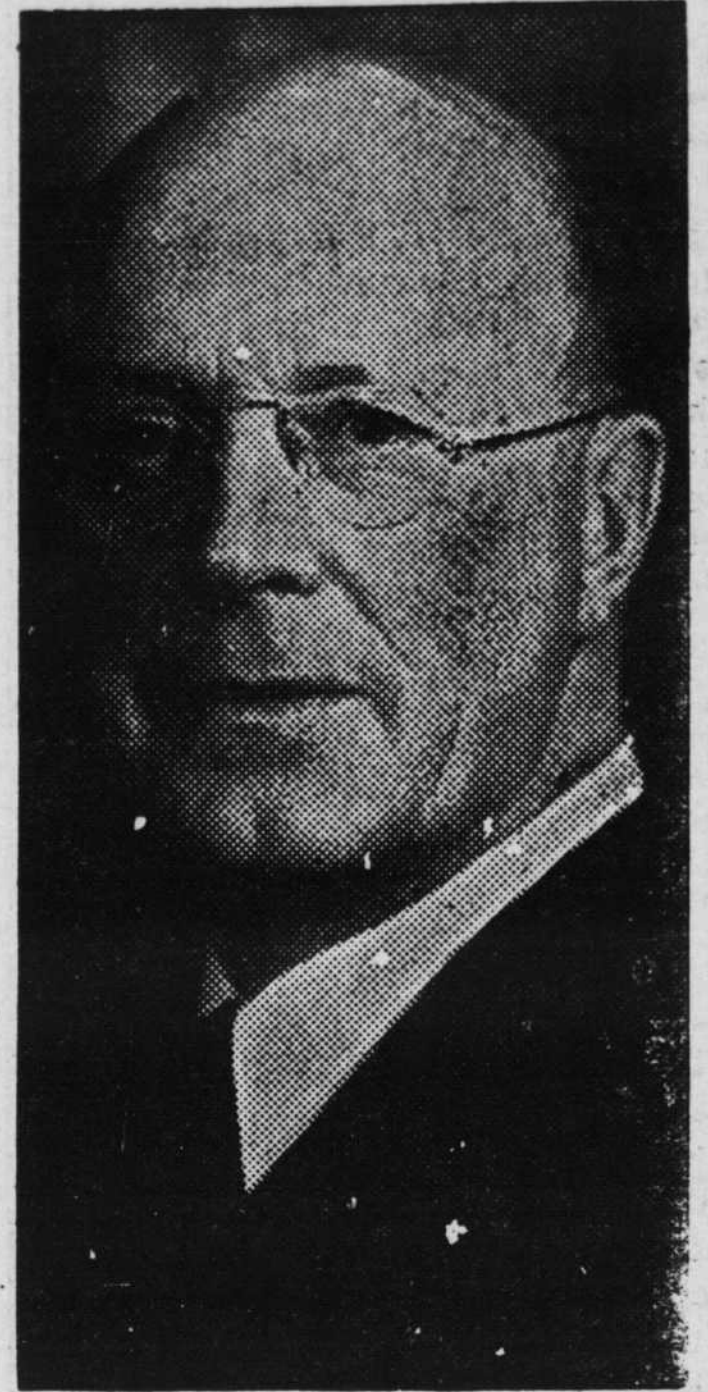
TASKER L. ODDIE

REPUBLICAN

CANDIDATE

for
**United States
Senator**

Invites a Careful Study
of His Record



Send

HARRY E. STEWART

to CONGRESS

and Help Stop Government
Interference with Business

L. R. "Dick" ARNOLD

of Searchlight

DEMOCRAT FOR

STATE SENATOR

28 YEARS IN CLARK COUNTY