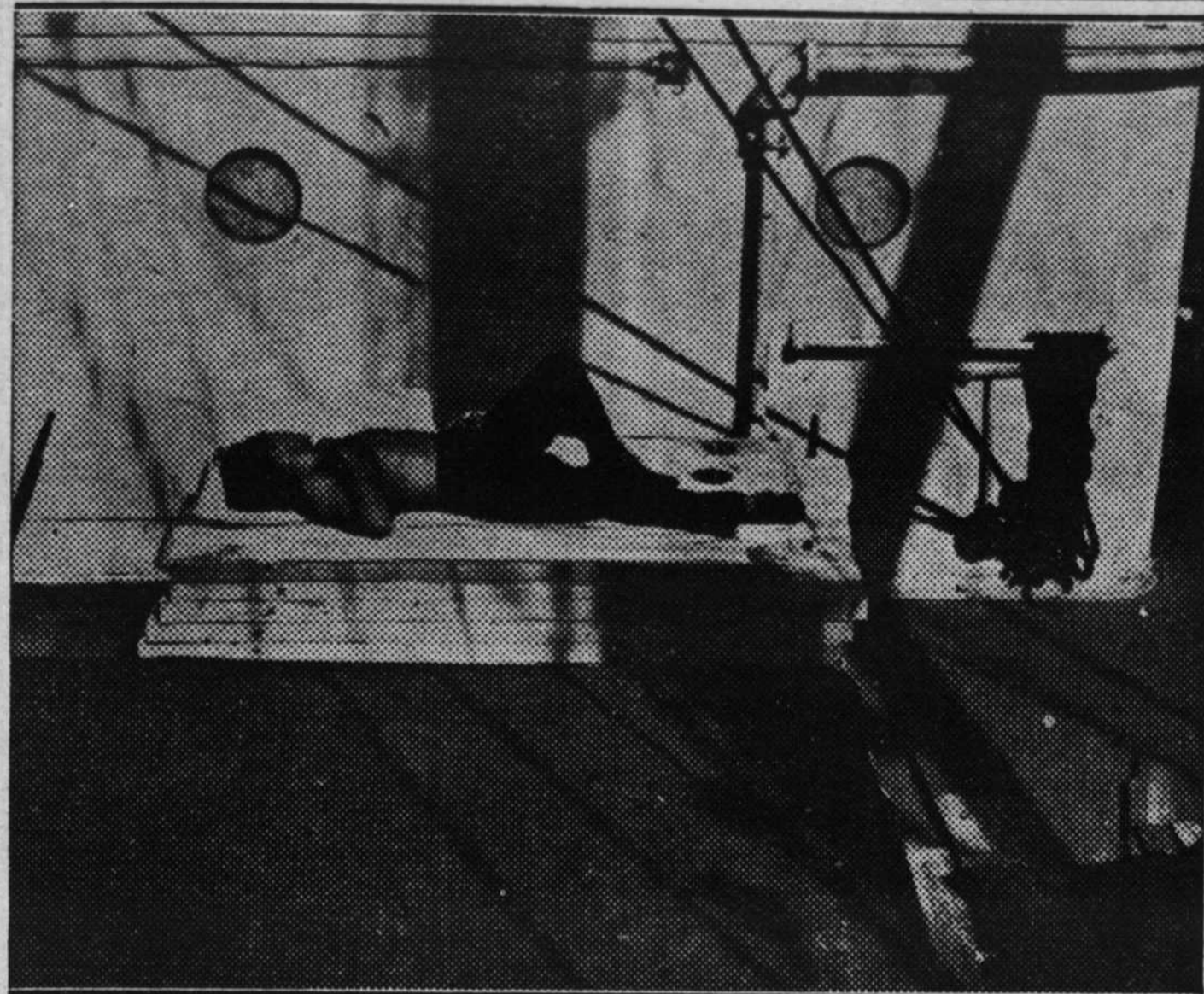


**"Don't Wake Me Up, Let Me Dream"**



When the humidity is high ashore, or the thermometer flirts with zero, there's only one way to solve the difficulty, according to this seaman aboard the Grace Line's "Santa Lucia." He just stretches out on the sunny side of the ship and takes a nap.

**What About the Wrong Number?**



Like any hotel a ship has a complicated telephone system. But it's got to work all the time. Under the eyes of two government inspectors, an officer tests the inter-communication telephone system aboard the Grace Line's "Santa Rosa."

**C. H. SLOAN**  
(DEMOCRAT)  
**For State Assembly**

General Election, November 8

**POLITICAL CARDS**

**GENE WARD**  
(Incumbent)  
REPUBLICAN  
— for —  
**Sheriff**

ELECT  
**HAROLD J. STOCKER**  
DEMOCRAT  
**County Commissioner**  
"A Mining Man for a Mining County"

**E. P. "Ted" CARVILLE**  
DEMOCRAT  
For  
**GOVERNOR**

**TASKER L. ODDIE**  
REPUBLICAN  
For  
**United States Senator**

**THOMAS M. CARROLL**  
DEMOCRAT  
For  
**ASSEMBLYMAN**

**BERKELEY L. BUNKER**  
DEMOCRAT  
For Re-election as  
**ASSEMBLYMAN**

ELECT . . . Democratic Candidate for  
Election November 8, 1938  
**ARCHIE C. GRANT**  
**State Senator**

RE-ELECT . . .  
**E. F. DAVISON**  
**County Commissioner**  
(Long Term)  
General Election, November 8