

Rails Bow to Women



WOMEN FOR WOMEN is the latest innovation inaugurated by W. M. Jeffers, president of the Union Pacific Railroad, with the promotion of his special representative, Avis Lobdell, to head a special women's department of the Union Pacific with headquarters at Los Angeles.

Miss Lobdell, former newspaperwoman and travel expert, assisted by 60 trained women, will aid prospective women travelers in matters of wardrobe, special diets, luggage, children's care on trains, tips to porters and other pertinent subjects.

Board Approves Street Program

The Board of City Commissioners met this morning for the purpose of considering applications presented by City Engineer C. D. Baker.

Those present at the meeting were Mayor H. P. Marble, Commissioners Herb Krause, Harvey Luce and Joe Ronnow, and City Clerk, Viola Burns.

The board approved the application for PWA funds to the amount of 45 per cent of the estimated cost of \$126,680 for street improvements as follows:

Grading, graveling, oiling, seal coat and 50,000 lineal feet of concrete curbs and gutters for the following streets:

- Gass, from Main to Eighth.
- Hoover, Main to Seventh.
- Coolidge, Main to Fifth.
- First, Second, Third, Fourth and Fifth streets from Garces to Coolidge.
- Seventh from Garces to Charleston.
- Eighth from Clark to Gass and from Mesquite to Oak.
- Ninth and Fremont to 150 feet south of Garces and from Stewart to Mesquite.
- Tenth, Ogden to Stewart.
- Mesquite, Eighth to Ninth.
- Stewart, curbs and gutters from Main to Fifth.
- First street, north of Stewart.
- Stewart, Ninth to the alley between Tenth and Eleventh.
- Ogden, Ninth to Eleventh.
- Carson, Eighth to Tenth.
- Bridger, Eighth to Ninth.
- Clark, Eighth to alley between

Ninth and Tenth.

Bonneville, Seventh to Ninth. Garces,, Seventh to Ninth.

The cost of the improvements to owners of abutting property will be 55 per cent of the total assessment to each parcel, to be paid in cash if the owner wishes within sixty days after notice of assessment is given, otherwise by a bond providing for ten annual payments with interest at not to exceed seven per cent.

Sewer extension projects as follows were approved:

All of Boulder Addition and a line across the railroad to connect with the packing plant of the Southern Nevada Meat and Provision Co.

South Main street, Hoover to Boulder, thence west to section houses on railroad right of way.

Alley between Coolidge and Boulder from First to Second.

Alley between Second and Third, from Charleston to Coolidge.

Alley between Third and Fourth, from Hoover to Charleston.

Alley between Fourth and Fifth from Gass to Fourth Place.

Alley between Fifth and Sixth, from Gass to Charleston.

Alley between Fifth and Sixth from Clark to Bonneville.

Alley between Sixth and Seventh from Bonneville to Hoover.

Alley between Seventh and Eighth from Clark to Charleston.

Alley between Ninth and Tenth from Fremont to Carson; from Bridger to Clark and from Bonneville to Garces.

Alley between Tenth and Eleventh, Bridger to Clark.

Alley between Eleventh and Twelfth, from Carson to Bridger.

Alley between Fremont and Carson, from Ladd's Resort to the Fifteenth street main sewer.

Alley between Eleventh and Twelfth, from Stewart to Ogden.

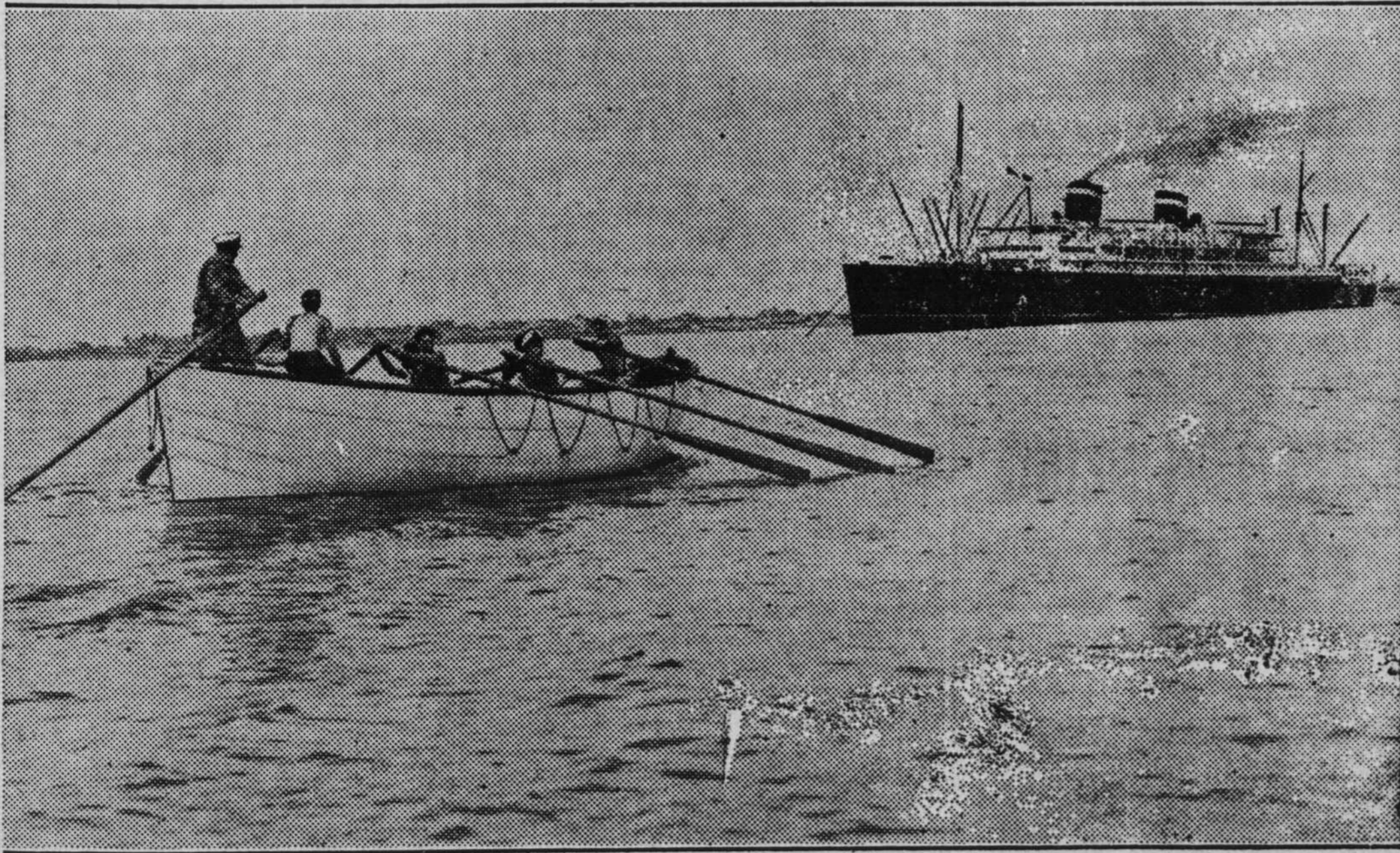
Alley between Eighth and State from Mesquite to Linden.

Alley between Sixth and Seventh, north of Linden.

Alley between Main and First, north of Stewart.

The project requires 20,000 lineal feet of eight inch sewer mains and the estimated cost is \$43,700.

BOAT DRILL



The crew of the Grace Line's "Santa Paula" go through a boat drill while the "Santa Paula" rides at her anchorage in the Caribbean, during a passenger's shore leave.

The California Placers company of California has four men in the Battle Mountain district prospecting for placer in quantity and location suitable for a dredging proposition. A Keystone drill is being used in test-

ing the properties.

The company is one of the largest dredging operators of the west, and has machines working in Oregon, Idaho and California at present.

The first work near Battle Moun-

tain was carried out on the Hinman ground in Iron Canyon and in Copper Basin. D. Kume, who is head of the company has visited numerous other favorable locations nearby.

AIRPLANE CRASHES NEAR GARDNERVILLE

Franklin Fisher and Arthur Thomas, Douglas county high school boys, and Pilot Allan Reese of Westwood, California, narrowly escaped death at Gardnerville when Reese's plane cracked up in a willow grove near the slaughterhouse.

According to report the motor died before the airship had gained much altitude. In gliding to the forced landing the plane was low in going over buildings. The wing and the wheel were caught by the willows, which were cut down a distance of more than 50 feet.

Skillful handling of the ship by Reese is credited with having prevented greater mishap. Reese has been flying many years and has a commercial license, and an operator's license. He also teaches flying.

Young Fisher is the son of Mr. and Mrs. Walter Fisher, formerly of Carson City.

Secretary Perkins, on her way to Geneva, was quoted in Le Havre as saying that business is "good enough" in the United States for America to give Europe a few tips. But not on budget balancing or employment.