

Nevada Northern Would Retrench

The Nevada Northern Railway has made an application for permission to discontinue passenger service of the railroad, which operates between Ely and Cobre on the main line of the Southern Pacific, says the Ely Record.

The application has been filed with the public service commission

in Carson City and the hearing on the same will be held shortly after April 15, according to Harley Harmon, commission chairman.

The railroad company's petition states that its out-of-pocket costs for the passenger service in 1937 was \$8,272, including wages, fuel locomotive and car repairs and similar costs.

G. L. Hickey, general manager of the company, this morning stated that along with the permit being sought to discontinue the passenger

service a permit would be sought to operate a bus line from Ely through McGill and Currie to Wells where buses similar to those operated by the Greyhound company would meet with train service there on the main line.

In pointing out the advantages of the bus service Mr. Hickey stated that the fare rate would be the same, that Wells is only 140 miles from Ely as compared to Cobre being 146 miles, and that passengers would have better service due to the shorter waiting period.

Wilbur Evans in Concert Tonight

Las Vegas have a treat in store for them tonight at the War Memorial Building when the American baritone, Wilbur Evans makes his appearance.

He is considered by music critics to be the "coming star" in the music world. He has youth and a wonderful voice and sings his way right into your heart.

This will be the last and probably the best of the concerts sponsored by the Southern Nevada Community Concert Association for the 1937-38 season.

Nevada Farmers To Plant Trees

Many forest trees will be planted on Nevada farms this spring for windbreak, shelterbelt, and woodlot purposes. It is indicated this week by the University of Nevada Agricultural Extension service.

Stimulated by the low cost of the trees and the tree planting provisions of the Federal Farm program in this state, farmers in most of the counties are now sending in their orders and preparing the land for planting when the seedlings are shipped a little later.

The trees are made available in Nevada by the Nevada Agricultural extension service, through an arrangement with the Utah State Agricultural college, where they are raised under the federal Clarke-McNary act. They are sold for only a few cents each to encourage planting.

Three softwoods and a great variety of hardwoods are available to Nevada farmers and ranchers.

The so-called softwoods include the ponderosa pine, blue spruce, and eastern red cedar, a new tree in the offering this year.

Hardwoods which may be obtained through the cooperative arrangement are green ash, hardy catalpa, Siberian elm, black locust, thornless honey locust, Russian olive, Siberian pea tree, black walnut, and golden willow.

Orders for the trees are being cleared through the extension agents in the various counties of the state.

Because the trees are grown under the Federal act, they may be used only under certain conditions, J. Whitney Floyd of the Utah institution pointed out this week.

They must be planted on farmland in Nevada for woodlot, windbreak, or shelterbelt purposes.

All trees must be protected from fire, grazing trespass, and other injurious agencies, so far as is possible.

They must be cultivated and irrigated for the first four years after they are planted.

All plantations are to be open to inspection by the United States department of agriculture and the University of Nevada, if it is desired, and reports of the condition of the trees must be given if asked.

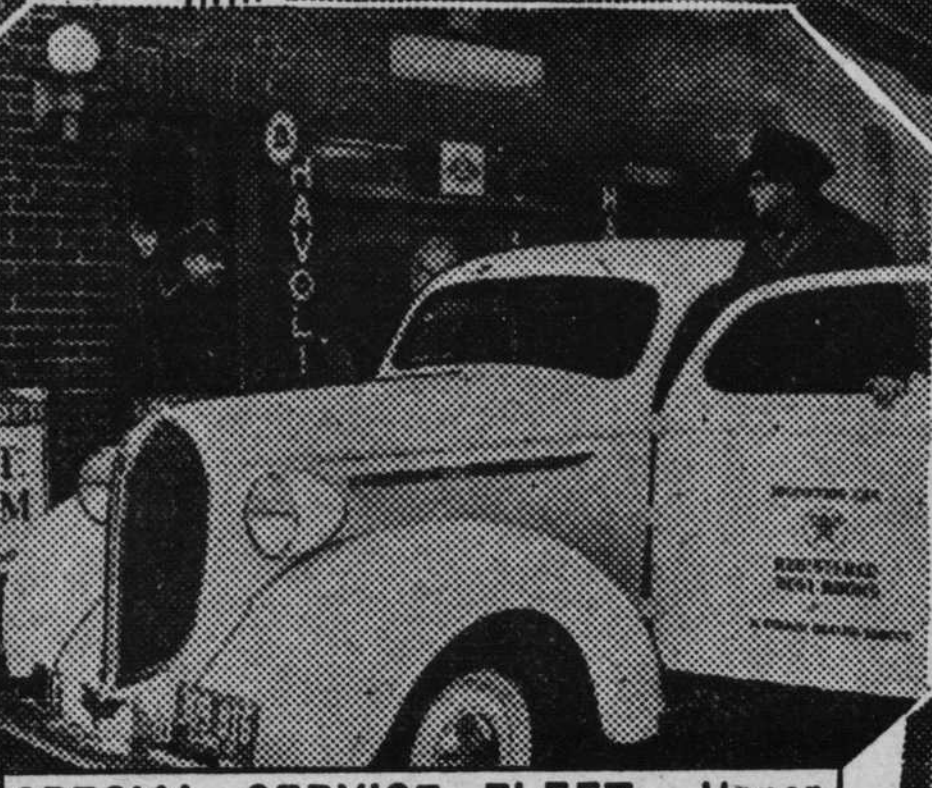
MRS. MARTIN ENTERTAINS

Mrs. R. W. Martin entertained a group of friends at pan Thursday evening at her home on Second St.

In The WEEK'S NEWS



WIVES OF NEW SUPREME COURT JUSTICES—Mrs. Hugo Black (left) and Mrs. Stanley Reed, wives of the new Associate Justices of the Supreme Court, as they attended the annual party dinner of the Women's National Press Club.



SPECIAL SERVICE FLEET—Upper right hand photo shows a special-duty fleet of new Plymouth cars, starting out to cover millions of miles in establishing the latest convenience for American motorists—a chain of 90,000 "registered rest rooms" at Texaco service stations. Part of the scheme is a regular inspection service by this big Plymouth fleet, to see that new luxury standards of comfort and cleanliness are maintained. Photo above—a close-up of one of the cars arriving at a service station for inspection.



ELECTRIC SHEARING—Twenty-four hundred sheep, shipped to St. Louis stockyards are sheared with gasoline powered clippers. Only about four minutes is required to shear a lamb. With the old type hand clippers, it took a man a-day to clip 25 sheep.



SIGN TRADE AGREEMENT—United States and Czechoslovakia sign a Trade Agreement designed to maintain and improve the mutually beneficial trade relations. Secretary of State Cordell Hull, who signed for the United States (right), watches the Czechoslovakian Minister Vladimir Hurban sign the document.



BRIGHT WOOL DRESS—Following the fashion dictates for color combinations this season, a bright red suede vest enhances this light wool dress of soft grey worn by Sally Eilers, picture actress. The dress features silver ring buttons tied with grey cords, white silk collar and cuffs.