

CHURCHES

FIRST CHURCH OF CHRIST, SCIENTIST

316 South Fourth street, across from grammar school, is a branch of The Mother Church, The First Church of Christ, Scientist, Boston, Mass. Meets every Sunday at 11 a. m. Sunday school at 9:30 a. m. and Wednesday evening at 8:00.

Christian Science reading room. 112 North Third street, open week days, except holidays, from 1:15 p. m. until 4:15 p. m., evenings, except Wednesdays, from 7 until 9 o'clock.

"Love" will be the subject of the lesson-sermon in all churches of Christ, Scientist, Sunday, Jan. 30.

The olden Text is from I John, 4:16: "We have known and believed in love that God hath to us. God is love; and he that dwelleth in love dwelleth in God, and God in him."

The lesson-sermon includes the Bible passage: "Love worketh no ill to his neighbour; therefore love is the fulfilling of the law" (Rom. 13:10).

Also the correlative from the Christian Science textbook, "Science and Health with Key to the Scriptures," by Mary Baker Eddy. "Jesus taught the way of Life by demonstration, that we may understand how this divine principle heals the sick, casts out error, and triumphs over death" (p. 25).

COLUMBIA WEST COAST CHURCH OF THE AIR

Mr. Hugh T. Campbell, committee on publication for the state of Washington, will conduct a Christian Science program from station KIRO 710 Seattle, from 8 to 8:30 Sunday morning, Jan. 30.

Not released over KOH Reno on account of its "Religious Hour" at same time.

Six Skyliners Delivered TWA

TWA has just taken delivery on the last of six new Douglas skyliners. Bill Coyle, chief pilot of the western division, made the acceptance test flights at Union air terminal, Burbank.

Four of the new ships were the 21passenger Skyclub type, the others sleeper planes. During 1937 TWA purchased 19 new Douglas crafts at a cost exceeding \$2,000,000.

Beware Kidney Germs if Tired, Nervous, Aching

Are you Run Down, Nervous, suffer Aching or Swollen Joints? Do you Get Up Nights, or suffer from Burning Passages, Frequent Headaches, Leg Pains, Backache, Dizziness, Puffy Eyelids, Loss of Appetite and Energy? If so, the true cause often may be germs developed in the body during colds, or by bad teeth or tonsils that need removing. These germs may attack the delicate membranes of your Kidneys or Bladder and often cause much trouble. Ordinary medicines can't help much because they don't fight the germs. The doctor's formula Cystex, now stocked by all druggists, starts fighting Kidney germs in 3 hours and must prove entirely satisfactory in 1 week and be exactly the medicine you need or money back is guaranteed. Telephone your druggist for Cystex (Siss-tex) today. The guarantee protects you. Copr. 1937 The Knox Co.

Nice Weather For Beans



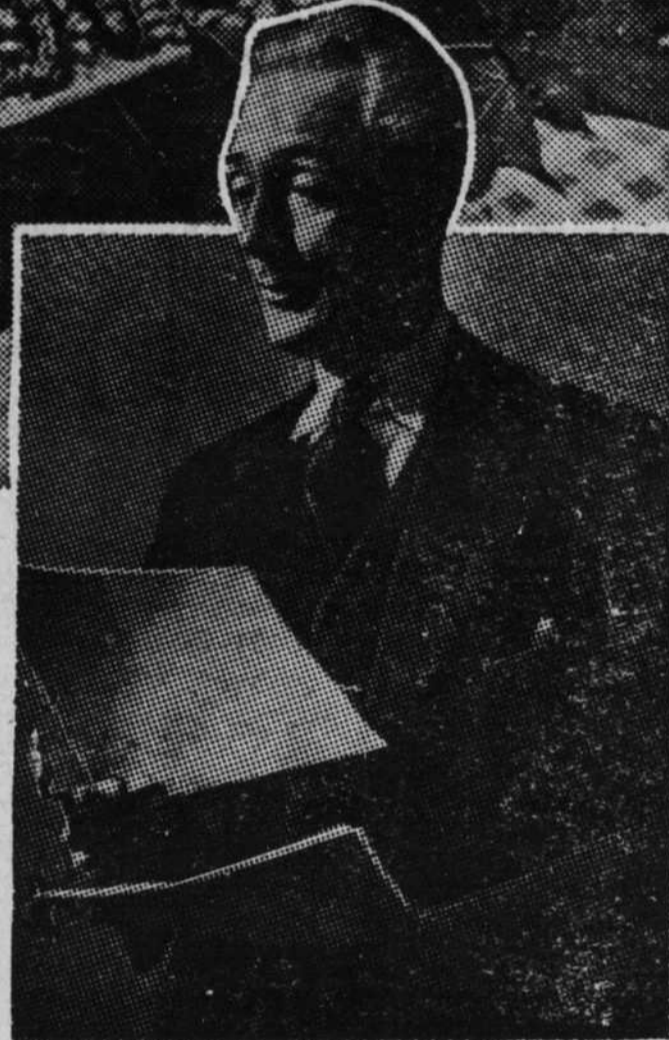
If it's a he-man dish you want to serve, consider beans done up in a real masculine style, for an informal Sunday night supper.

Most men are egotists about their cooking, if they can cook at all. And most men have a knack if you turn them loose in the culinary department. They are apt to be fussy, too, about special pots and pans, salad bowls and choice spices for dressings.

Bill Adams, former Shakespearean actor and director of John Barrymore's "Hamlet" in London, is just that way. Bill happens to specialize in baked beans. He first became fond of them when traveling on the road with Sothorn and Marlowe.

Since joining the radio field as the palate-stirring food editor of Columbia's "Heinz Magazine of the Air," Bill has become one of the country's leading gourmets, and informal entertaining is one of his hobbies. Frequently, after his Sunday afternoon broadcasts from 5:00 to 5:30, Bill invites hungry fellow artists up to his home for supper. And it's generally baked beans and sausages.

A red and white checked table cloth lends a note of informality. Scallop shells, instead of the regular pickle dishes, are used for relishes, warm muffins are piled high



Bill Adams

on a bread board and with a wooden trencher generously filled with cold slaw—it's help yourself.

If twelve people happen to drop in and they're really hungry this is Bill's pet recipe:

Use half a dozen tins of Boston style oven baked beans with pork and molasses. Put the beans an inch deep in a baking pan. Cover them with thin slices of onion—you'll need two onions. Pour over about a half cupful of tomato ketchup. Over the top arrange sausages about two inches apart.

Bake in moderate oven for an hour and after the first thirty minutes turn the sausages so that they will brown on both sides. Small sausage cakes can be used instead of the link sausages.

Pioche District Adds To Force

Foremost producer of the great Pioche zinc-lead-silver district in Lincoln county, the Combined Metals Reduction Co., is actively putting in effect plans that, rendered feasible by cheap electric power from Boulder dam, are designed to place it in the front rank among American base metal mining enterprises.

An electric powered pumping plant that is said to exceed in capacity any now in use in Nevada is being provided at the 1500-foot level of the main Caselton shaft, with secondary pump unit at the 840-foot level.

At the 1500 level a crosscut is to be driven nearly amile to connect with another of the company's principal shafts and to provide a main haulage way to the Caselton

shaft, through which ore will be hoisted to the coarse ore bins of the proposed mill, which will employ selective flotation and will have a capacity of between 800 and 1000 tons per day.

It is significant that although the Combined Metals Reduction Co. has been compelled to ship all of its product to Utah for treatment, U. S. bureau of mines figures show that in 1937 that company was Nevada's largest producer of silver; it produced considerably more than one-half the state's output of lead, and more zinc than all other mines in the state.

Combined Metals Reduction Co. is controlled jointly by the Snyder interests of Salt Lake City and the wealthy National Lead Co. of New York. It owns extensive mining properties near Stock on, Utah, together with an 800-ton selective flotation mill at Bauer, Utah. Its working force at Pioche has been greatly increased in late months.

Some sections of the Combined Metals' large property contain

Mineral Empire Will Celebrate

Roaring '49er days will be revived in San Francisco Feb. 12 and 13 when more than 1000 prominent western mining men and residents of northern California mining counties gather here for a two-day celebration incident to the dedication of the \$1,000,000 Hall of the Mineral Empire on Treasure Island.

Among features of the '49er celebration planned for the world's fair site will be an international frog jumping derby sponsored by the Boosters' club of Angels Camp, Cal. Frogs from far-away lands will compete with the pick of the Angels Camp jumpers.

A gigantic pedestal of gold bearing ore mined from the Coloma region where James Marshall first discovered gold will be unveiled at the dedication of the Hall of the Mineral Empire, in which the mining industry plans a \$1,000,000 display for next year's exposition.

The far-famed Ancient and Honorable Order of E Clampus Vitus, miners' "horseplay" organization, will have a leading part in colorful ceremonies reviving '49er days. "Anything for a laugh" is the slogan of E Campus Vitus, founded in the Sierra in 1849 to serve as a safety valve for the men of the mines.

Other organizations participating will be the Native Sons and Daughters of the Golden West and the California Society of Pioneers.

A S & R Leads World In Size

It has been said of the American Smelting and Refining Co., known throughout the world as the "A. S. & R.," that its business is so varied as to defy analysis by anyone other than a company official with all facts before him. The company has long been and continues to be the world's foremost smelter and refiner of metals.

Producing from its own large mines in the United States, Canada, Mexico and South America, the company operates 25 smelters, five refineries and several railroads.

It has been one of the largest purchasers of both siliceous and base ores from Nevada mines, treated according to type either at its Garfield smelter in Utah or at the Selby plant in California.

Either as wholly owned subsidiaries or through part ownership the company dominates a large number of mining and processing operations of the first magnitude. Its mine products include gold, silver, copper, lead, zinc and coal and it produces large quantities of sulphur, arsenic, bismuth, cadmium, platinum and other raw or finished by-products.

much manganese which, with recovery processes now being developed, will probably constitute in future a highly important part of its product.

The mines have been developed on a broad scale in late years and are said to contain available reserves of great magnitude. Ed H. Snyder is general manager of the company at Pioche.—Nevada State Journal.