

**CAMPBELL DISCUSSES PUBLIC LAND POLICY**

The present public lands policy of the government is of vital concern to mining men and the mining industry must be watchful to protect its interest, according to Thos. E. Campbell, formerly governor of Arizona, who spoke before the Mining Association of the Southwest in Los Angeles, November 10, on "Our Public Lands Policy," and "Mining Exhibits, Inc." Governor Campbell

is executive vice president of the latter organization.

Governor Campbell outlined the historic land policy in the United States as it applies to mining, and then called attention to many actual and proposed withdrawals of public lands in Arizona, California and Nevada, which have tended to retard mining development.

President Howard Kegley outlined the work the association has done on mineral land withdrawals, silicosis surcharge, compensation insurance, mine to market roads and

similar subjects. The association is now conducting a strenuous campaign throughout the state for the passage of the Sheppard bill.—Mining News.

**WHEN FAITH IS TRAGIS**

To be firm in one's convictions is a desirable trait in human nature, but to have one hundred per cent faith in one's own wisdom, and none in that of his fellow man, is tragic.—Fairmount, Minn., Sentinel.

**CHURCHES**

**CHRISTIAN SCIENCE SOCIETY**

316 South Fourth street, across from grammar school, is a branch of The Mother Church, The First Church of Christ, Scientist, Boston, Massachusetts. Meets every Sunday at 11 a. m. Sunday school at 9:30 a. m. and Wednesday evening at 8:00

Christian Science reading room, 112 North Third street, open week days, except holidays, from 1:15 p. m. until 4 p. m. Evenings, except Wednesdays, from 7 until 9 o'clock.

"Thanksgiving" will be the subject of the Lesson-Sermon in all churches of Christ, Scientist, Thursday, November 25, 1937.

The Golden Text is from Psalms 28:7, "The Lord is my strength and my shield; my heart trusted in Him, and I am helped; therefore my heart greatly rejoiceth; and with my song will I praise Him."

The Lesson-Sermon includes the Bible passage, "O give thanks unto the Lord; for He is good; for His mercy endureth forever." (Ps. 118: 29.)

Also the correlative from the Christian Science textbook, "Science and Health with Key to the Scriptures" by Mary Baker Eddy, "The world acknowledged not his righteousness, seeing it not; but earth received the harmony His glorified example introduced." (p. 54).

"Soul and Body" will be the subject of the Lesson-Sermon in all churches of Christ, Scientist, Sunday, November 21, 1937.

The Golden Text is from Psalms 62:5, "My soul, wait thou only upon God; for my expectation is from Him."

The Lesson-Sermon includes the Bible passage, "And this is life eternal, that they might know thee the only true God, and Jesus Christ, whom thou hast sent." (John 17:3).

Also the correlative from the Christian Science textbook, "Science and Health with Key to the Scriptures" by Mary Baker Eddy, "Soul, or Spirit, is God, unchangeable and eternal; and man coexists with and reflects Soul, God, for man is God's image." (p. 120).

**PAST MATRONS' CLUB DINES IN BOULDER CITY**

The Past Matrons Club enjoyed a delightful dinner in Boulder City Wednesday evening with Mrs. Irving Harris, Mrs. Fauna Finney and Mrs. C. D. Wyatt as hostesses.

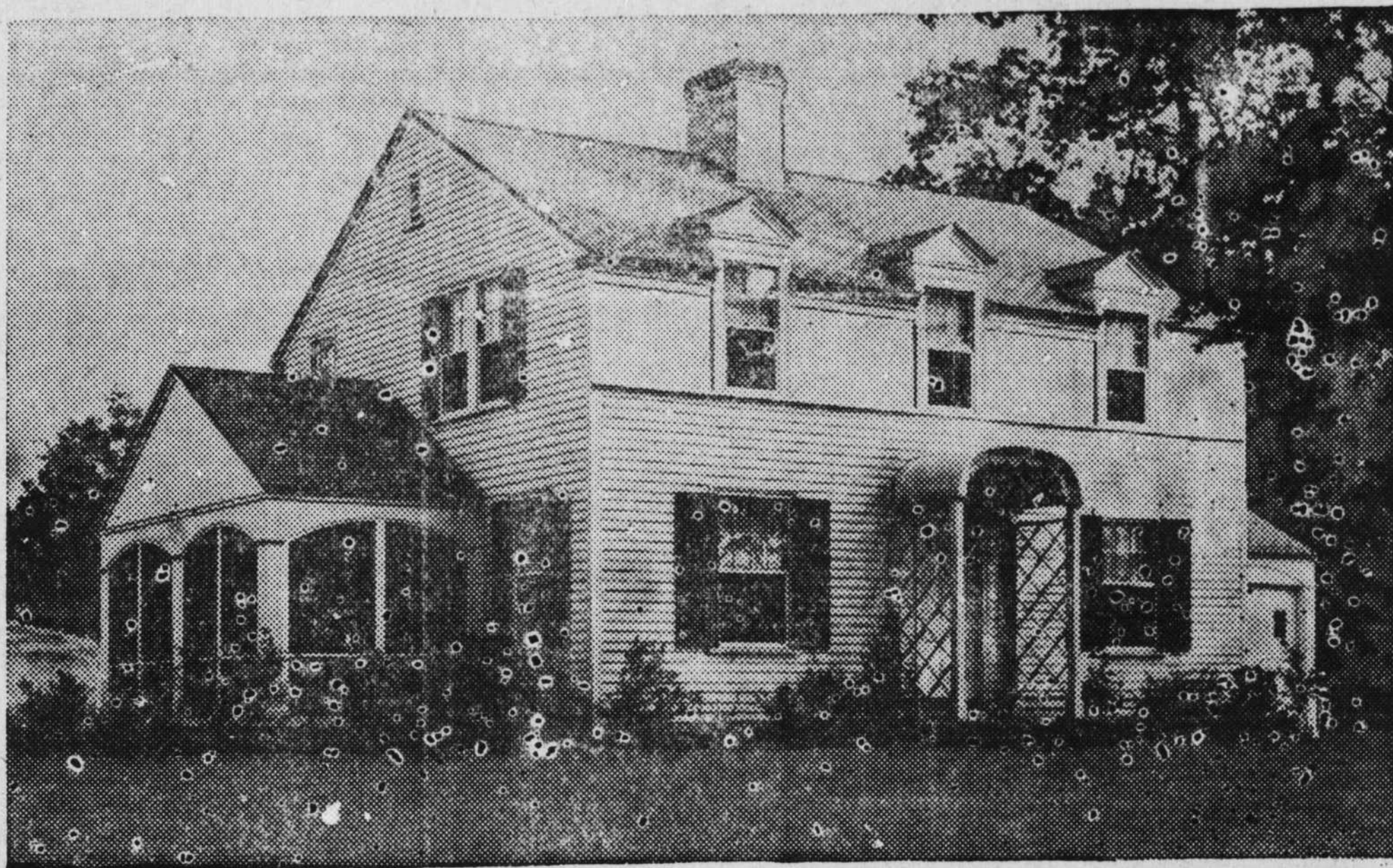
The dinner was served by the Ladies of the Community church at a large and beautifully decorated table. During the dinner a most enjoyable program was presented including a reading by Mrs. Crosley, and a vocal solo by Mrs. Seddlemean, accompanied at the piano by Mrs. Weede. The guests then adjourned to the home of Mrs. Harris, where a short business meeting was held.

The club was presented with a gavel by Mrs. Rimple of Boulder City. The gavel was made from Fremont's barberry wood found near Fruita, Colorado. The shrub was discovered by General Fremont and named in honor of him.

After the business session the guests enjoyed several rounds of bridge.

Al Worswick, local architect, is confined to the Las Vegas hospital suffering with pneumonia.

*New England Colonial*



This house, of a style familiar to all who travel through New England, was built at New Market, N. H., for \$6,575, and a commitment to insure the mortgage was made by the Federal Housing Administration. The plan revolves around a large center hall. In interesting deviation from the plan usually followed by Colonial houses of this type is the kitchen in the front of the house, with the dining room overlooking the rear garden. The second floor has three bedrooms and bath, with exceptionally generous closet space. L. O. Geoffrion is the architect who designed the house.

