

Fix Boundaries Of Game Refuge

Through the cooperation of the Southern Nevada Fish and Game Protective Association, the Desert Game Refuge boundaries in the vicinity of Charleston Mountain have been recently posted. This refuge was set aside by Presidential proclamation on May 20, 1936, for the purpose of preserving game within the boundaries, and with the posting, regulation two of Executive Order No. 7373 which reads, "Unless authorized by permit from the resident officer in charge, the carrying of firearms, except by authorized federal or state officers, is prohibited," will be enforced.

During the coming deer season there will be no hunting within the refuge, it is announced by Robert E. Towle, of the Bureau of Biological Survey. It is expected that additional posters will be placed about all of the Desert Game Refuge boundary in the near future in order to insure protection to the mountain sheep which inhabit Sheep Mountain and other mountain ranges north of the Tonopah highway. Anyone found carrying firearms within any of this area will be prosecuted under the federal law and sportsmen in this vicinity are requested to use their influence in carrying out this regulation.

The extent of the refuge as now fixed lies mostly within Clark county, but includes a strip 24 miles wide in Lincoln county on the north and a three-mile strip along the eastern line of Nye county.

CHURCHES

CHRISTIAN SCIENCE SOCIETY
316 South Fourth street, across from grammar school is a branch of The Mother Church, The First Church of Christ, Scientist, Boston, Massachusetts. Meets every Sunday at 11 a. m. Sunday school at 9:30 a. m. and Wednesday evening at 8:00

Christian Science reading room, 112 North Third street, open week days, except holidays, from 1:15 p. m. until 4 p. m. Evenings except Wednesdays, from 7 until 9 o'clock.

"Are Sin, Disease and Death Real?" will be the subject of the Lesson Sermon in all churches of Christ, Scientist, Sunday, October 10, 1937.

The Golden Text is from Romans 8:2, "The law of the Spirit of life in Christ Jesus hath made me free from the law of sin and death."

The Lesson Sermon includes the Bible passage, "The Lord is good, a strong hold in the day of trouble; and he knoweth them that trust in him." (Nah. 1:7).

Also the correlative from the Christian Science text book, "Science and Health with Key to the Scriptures" by Mary Baker Eddy, "God will overturn, unflinching, He comes whose right it is." (p. 223).

STREET CARS DOOMED

SYDNEY, Australia—Sydney will have no street cars within 20 years, according to Premier Stevens. They will be gradually replaced by buses and trolley buses without any increase in fares.

Magazine Gives Gyp Cave Story

The Nevada State Highway Department has issued the September number of the booklet, "Nevada Highways and Parks," containing a most interesting article entitled "Old Slothy Lived in Gyp Cave."

The article is illustrated with views of the outside and the inside of the cave and a pen and ink sketch by G. H. Knight of the giant sloth, remains of which were found in the cave.

Other articles in the issue is one on the Nevada Ranges and an account of the experiment made on the Reno to Pyramid Lake highway of using cotton fabric as a reinforcing surface layer over a three-mile stretch of the highway.

ONLY CITIZENS MAY ENLIST IN THE ARMY

A recent act of congress, approved by the President, should cause resident aliens to pause and take more seriously their relationship and responsibility to the United States.

The act prohibits all original enlistments of aliens in the defense forces of the United States. An order issued by the war department, made in accordance with the new law, permits reenlistments by

an alien already in service, provided he agrees to complete his naturalization and becomes a citizen as soon as possible.

The federal government has for many years permitted only citizens to be employed in its civil positions. Exceptions are occasionally made if and when technicians or scientists are needed and citizens cannot qualify for the position. This policy is followed in both the classified and non-classified services of the government.

Home Loan Bank System Growing

The twelve regional banks of the Federal Home Loan Bank system will celebrate their fifth birthday next Friday, October 15, with gross assets of their member thrift and home-financing institutions at the record-breaking peak of \$3,893,695,000, reached on October 1, the Federal Home Loan Bank Board announced this week.

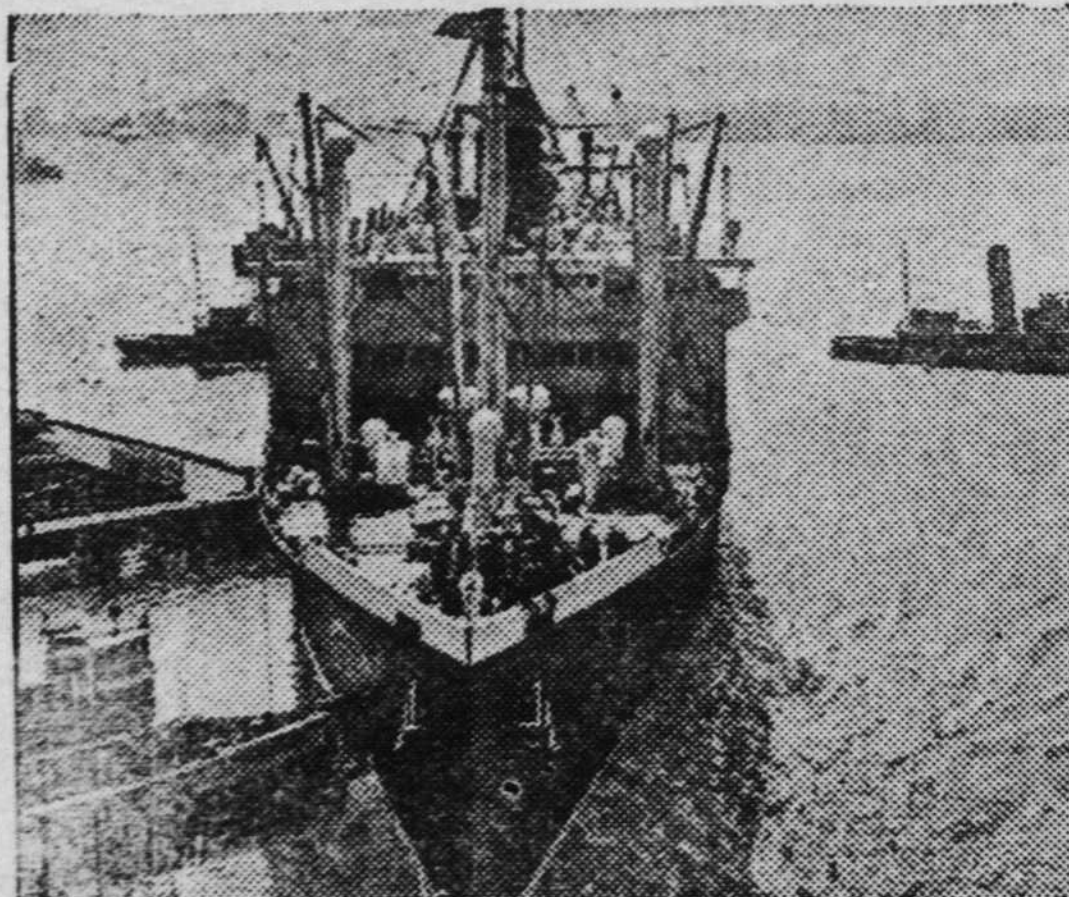
The earliest comparable report is that of January, 1934, when combined assets totaled only \$2,600,000,000. In the October 1 figure is represented a gain of more than \$250,000,000 made in August and September, attributed to an increase in the membership of the bank system and growth in the size of its

members. The membership has reached 3,915, consisting of 1,286 federal and 2,420 state-chartered savings and loan associations, 83 cooperative banks, 35 homestead associations, 23 life insurance companies and eight mutual savings banks.

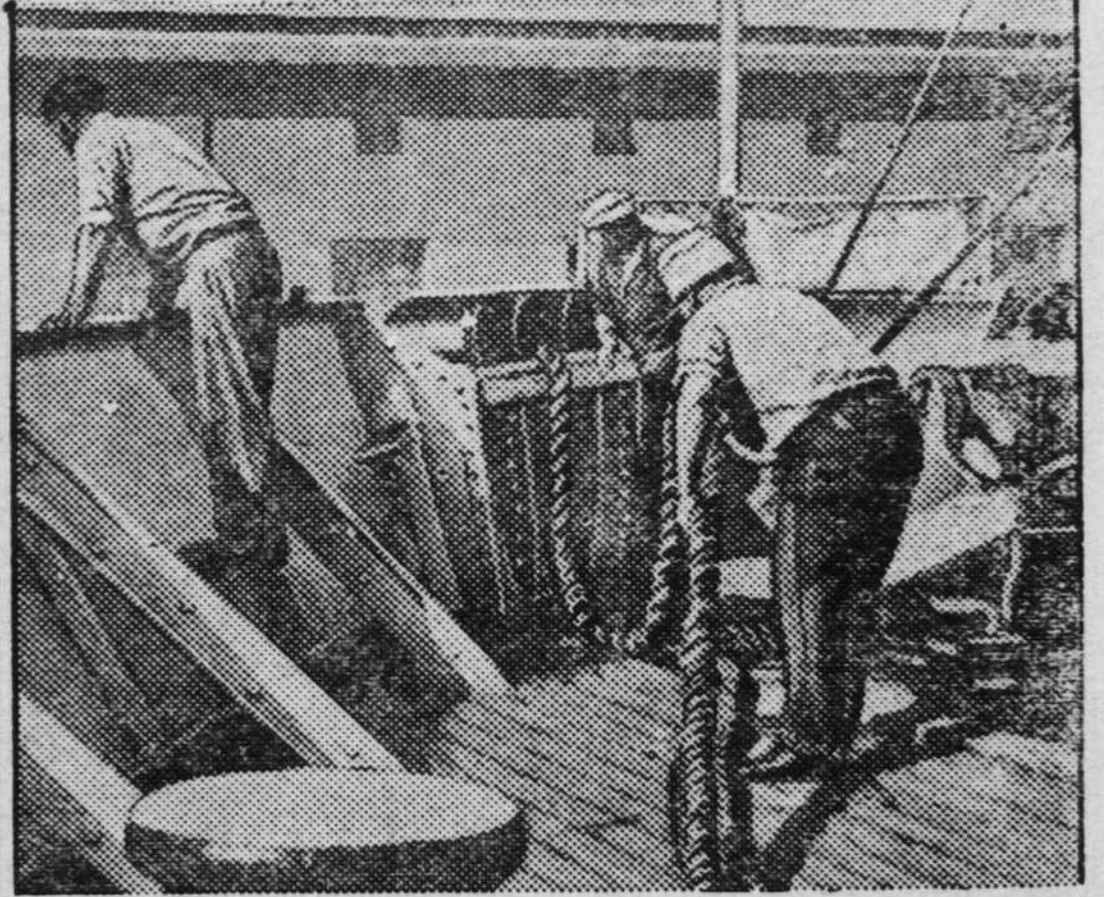
Although created by congress during the height of the depression, this credit reserve system is a permanent agency to safeguard thrift and ease the conditions of home ownership by strengthening the financial institutions which constitute a major part of the home-finance structure of the nation. Existing for the benefit of the millions of small investors in its member institutions and the families buying their homes through long-term loans from them, it functions in a manner comparable to the Federal Reserve System in the field of commercial banking. It makes no direct loans to individuals. Membership is optional—institutions in order to qualify must be solvent, well managed, and engaged in sound and economical home financing.

Long overdue as a national stabilizing influence, the Bank System has grown steadily over the past five years. At the end of 1932, only 119 thrift and home-financing institutions had been approved for membership. A year later there were 2,086 members. The present 3,915 members are located in 1,854 cities in every state of the Union, and in the District of Columbia, Hawaii and Alaska.

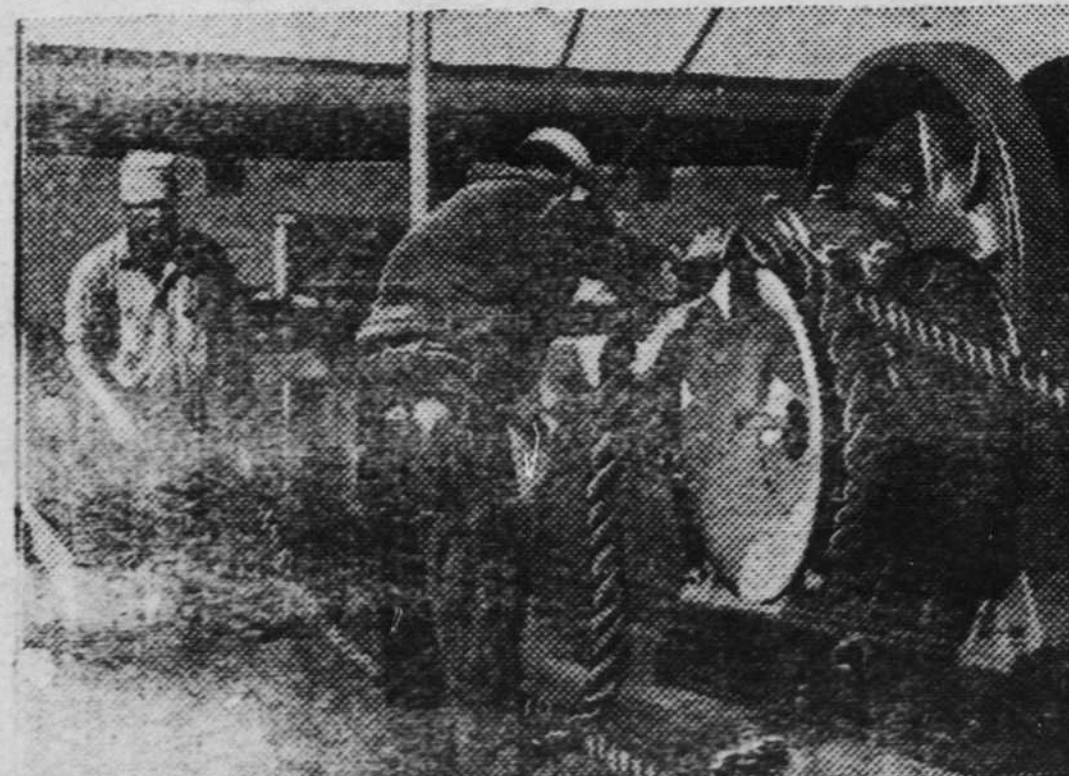
DOCKING—AT NEW YORK



While tugs push and pull against the contrary forces of wind and tide, the Grace Line's "Santa Elena" moves out of the North River channel into her slip.



The guide lines have been picked up by the shore gang, and seamen let out the forward hawser which will be made fast to a pier cleat.



Port captain has ordered the hawsers taken in. Powerful winches haul in the slack edging the ship safely alongside the Grace Line pier.



The "Santa Elena" is docked; baggage is piled up on deck; and passengers wait impatiently for a first-hand look at New York.