

Parker Dam Is Most Unusual

Parker Dam, being constructed by the Bureau of Reclamation on the Colorado river 155 miles below Boulder Dam, will be one of the most unusual structures in the world. It will be a concrete arch rising 340 feet above its foundation, but only about 100 feet of the dam will extend above the stream bed. The remainder will be sunk in the tremendous excavation, 210 feet deep, required to reach bedrock.

Parker Dam will reregulate the flow of the Colorado river below Boulder Dam, having a storage capacity of 700,000 acre-feet of water. It will generate hydro-electric power, and will raise the water surface of the river more than 75 feet for diversion into the aqueduct of the Metropolitan Water District of Southern California. The water district is providing the funds for construction of the dam.

The first bedrock reached was described as "wonderful" by the engineers in charge. And the excavation was called "the toughest ever attempted by man" by F. T. Crowe, superintendent for the contractor, Six Companies, Inc., in a telegram to John C. Page, commissioner.

Bedrock was reached at a depth of 230 feet below the river bed. The deepest part of the excavation was expected to reach 240 feet.

Excavation started in October last year, when the Colorado river successfully was diverted through two tunnels, 29 feet in diameter and 1,730 feet long, driven around the dam site through the Arizona canyon wall.

Parker Dam is now almost 70 per cent completed. The contract for its construction was awarded August 23, 1934, but construction was interrupted by the state of Arizona shortly after work began, and was suspended for many months.

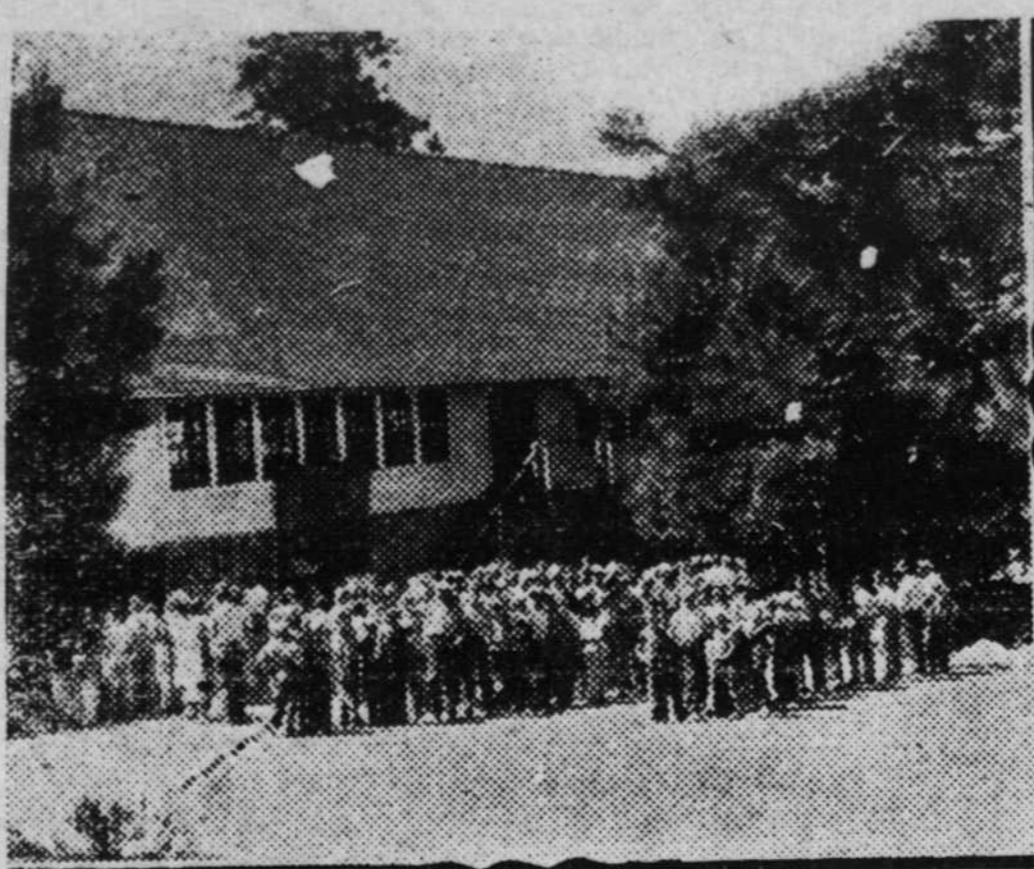
The aqueduct, for which Parker Dam will serve as a diversion structure, will carry a billion gallons of water daily 242 miles from Parker reservoir to thirteen cities on the coastal plain of Southern California. Water in the aqueduct will be lifted a total of 1,617 feet in crossing two mountain ranges. The lifts will be made at five pumping stations, the first of which will be at the intake on the California side of Parker reservoir.

Foundations for a power-house are being constructed at Parker Dam. This power-house eventually will contain four generating units of 20,000 kilowatt capacity each. Two of these will be used by the Metropolitan Water District and two will be reserved for use by the government.

Social Security Duplicate Cards

William Doyle, manager of the Reno field office of the Social Security Board announced that the Bureau of Federal Old-Age Benefits went to the aid of job-seeking workers who have lost their social security account cards and are awaiting the issuance of duplicates. Reports from many field offices, it was explained, have indicated the

Nevada 4-H Club Camp To Be Held Next Week



Several hundred Nevada 4-H Club boys and girls today are looking forward to the diversions pictured here when they gather next week, August 2-7, for the fourteenth annual Nevada Farm Bureau camp at Zephyr cove, Lake Tahoe.

Culmination of the Nevada 4-H Club year, the camp stresses education in farm and farm home practices, coupled with wholesome outdoor recreation.

Boys and girls at previous camps are shown here engaged in the activities which will feature this year's educational outing.

The picture in the upper left hand corner shows the youngsters gathered before the huge dining hall ready to file in for the meals prepared to satisfy the husky appetites which come from camp life.

Swimming at the Zephyr cove beach, one of the best on Tahoe, is a daily feature at the camp under the direction of swimming instructors. In the upper right photograph the Four-Aitchers of a previous camp are shown on the sand and in the water.

The boys in the picture at left

center are judging livestock in one of the camp's hardest fought contests. Animals on the farms in Carson valley are used in this competition.

Calls for all camp activities are sounded by a bugler. Here he is (right center) summoning the youngsters to assembly.

Classes in a variety of farm and farm home practices are held under the pine trees which dot the camp ground. This picture shows (bottom) one of the group's at last year's outing.

reluctance of some employers to put a man on the pay roll until he can produce his card.

To prevent, so far as possible, the temporary unemployment of a worker, the Bureau has prepared for distribution at all of its field offices where account numbers are being

assigned, a form, which may be shown to the employer by the worker as evidence that he has applied for a new account number card.

The card, signed by the manager of the field office, states that the employee "has filed an application

for a duplicate social security account number card to replace the card previously issued to him," and adds that the duplicate card "is now in course of issue." Also printed on the card is the suggestion that the employee show the card to his employer.