

Rainbow Hues In Zion Park

Massive rock mountains which are painted in rainbow hues and which tower up a half or two-thirds of a mile, are among the remarkable formations to be found in Zion National park, one of the "southern Utah parks" group of which Grand Canyon National park also is one. Zion has an area of nearly 150 miles, and includes the colorful Zion Canyon. It is reached only by the Union Pacific railroad at Lund, Utah, from which buses make park tours.

The principal color feature is the combination of a brilliant red lower section and a white top on most of the formations, brought out with unusual force in the lofty Great White Throne, which rises 2,500 feet, nearly half a mile, above the canyon floor. So inaccessible are the sheer cliffs of this great landmark that park authorities will not permit any attempt to scale the peak.

Zion National park takes its name from that given to the canyon by the early Mormon settlers. Deeply religious, they found in the awesome surroundings of the canyon constant reminders of the deity. This thought is expressed further in the names of many of the other formations, including the East and West Temples, Angels' Landing, etc.

Man has done his part to make Zion park one of the outstanding scenic spots of the country. Nearly half of Mount Carmel highway, whose 24 miles cost \$2,000,000 to build and which is considered one of the unusual engineering accomplishments of the day, lies in the park. In order to put the road through the rock-ribbed park, it

was necessary to build a tunnel more than a mile long through solid rock.

In six places where the tunnel went near the cliff, giant "windows" were chiseled out, offering panoramic views of startling beauty to motorists passing through the tunnel. In other parts of the park this unusual highway doubles back and forth to get up over the cliff walls of the canyon. In an area of half a square mile, there is three and a half miles of road.

Scientific research has disclosed numerous evidences of cliff dwellers in Zion Canyon. It is believed that these prehistoric peoples made hunting forays into the surrounding territory and possibly even farmed the fertile floor of the canyon and retired to their cliff homes at night for safety.

Zion National park is an ideal spot for the tourist who wants to "explore." Competent guides and sure-footed horses are available for absorbing jaunts over trails that are safe but which are sure to furnish a maximum of thrills. The park's official "season" is from May 15 to October 15, normally, but the winter visitor has a real treat in store, as the vivid coloring offers a splendid contrast against the snow. In spring, melting snows send countless waterfalls gushing out of the rocks all over the park, and some of them tumble a thousand feet before they break into spray.

Cotton Fabric For Highways

CARSON CITY, Nev., July 9. — Highway department maintenance crews have completed recently, the work of placing a cotton fabric reinforcing surface layer on the

Pyramid lake road, beginning at the junction of North B street in Sparks and continuing for a mile and a half beyond the old Wedekind mine, according to information given out by Robert A. Allen, state highway engineer, at highway headquarters today. This innovation in road construction methods is in the nature of an experiment and was carried out by the highway department in cooperation with the U. S. bureau of public roads. The experiment will be limited to this section of the Pyramid lake road. It is the first project of its kind to be completed in Nevada and results will be recorded and watched carefully by state as well as federal highway engineers.

A decided advantage is claimed for the cotton fabric reinforcement by the proponents of the method

because, they claim, it provides a matted binder or seal by which the top structure of the road, so treated, is held more compactly together and offers greater resistance to road wear. It likewise acts, according to its advocates, as a seal against moisture rising from beneath, and in this manner, aids in preserving more securely the road's top structure.

"Use of cotton fabric as a reinforcing surface layer has been tried in other states," Robert Allen said, "but insufficient time has elapsed since its installation to positively prove its success or failure. The Bureau of Public Roads is anxious to give the method thorough tests under varying conditions, and for this reason the experiment is being conducted on a short stretch of Nevada road."

LAS VEGAS PROFESSIONAL CARDS

DOCTORS

Las Vegas Hospital Association

PHONE 20

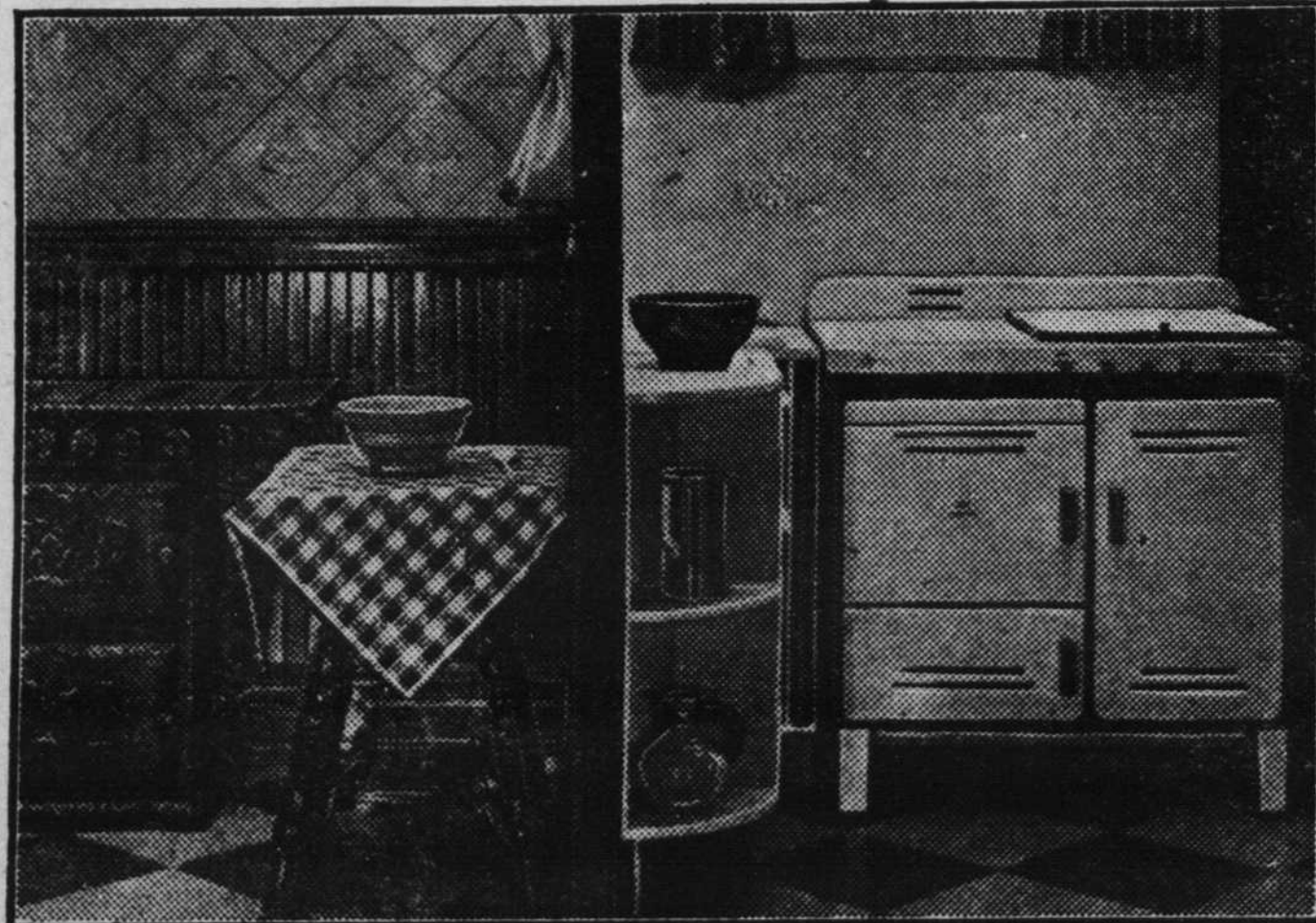
R. D. Balcom, M. D. R. W. Martin, M. D. C. W. Woodbury, M. D.
EIGHTH and OGDEN STREETS
J. R. McDaniel, Jr. — Boulder City, Nevada

Phone 421 **DR. E. WINTER** 203 Beckley Bld'g
OSTEOPATH — PHYSICIAN AND SURGEON
GENERAL PRACTICE
HEMORRHOIDS (Piles), HERNIA (Rupture), and VARICOSE VEINS
Permanently Removed by Injection Method — Non-Surgical
TONSILS Removed by Electro-Congulation

HERBERT M. DIXON
Optometrist and Optician
Eyes Examined — Glasses Fitted
225 Fremont St. Phone 636

IF IT'S PRINTING—
THE AGE CAN DO IT

This Is The Way Times Change



THE bride of 1897 thought she was lucky to start housekeeping with one of those new gas ranges like that shown above, for it meant a step forward in progress from her mother's wood and coal stove that needed continual stoking. The proud bride set her range against dark brown wainscoting that wouldn't show the dirt, and added a daring touch of a checked red cloth on the table. Yet, it's a sad picture to the eyes of us moderns, who take our modern conveniences so lightly.

AN up-to-date lass who treads the middle aisle today starts her housewifely duties in a spick-and-span kitchen like this, with a white modern automatic gas range with colorful enamel handles. In fact the woodwork in her kitchen is white enamel too, with dashing splashes of color in accessories and curtains. She needs no cover for the table for there is no table, merely a convenient continuous working surface topped with linoleum or shining metal.

ATTORNEYS

C. D. BREEZE

ATTORNEY AT LAW

120 South Second Street

Phone 6

I. S. THOMPSON ATTORNEY AT LAW

Rooms 5 and 6, Griffith Bldg.
Las Vegas, Nevada

CHAS. LEE HORSEY ATTORNEY AT LAW

Suite 1-2, Clark Building
Phone 164

FRED S. ALWARD ATTORNEY AT LAW

Rooms 18-20, Clark Bldg.
Phone 522 Las Vegas, Nevada

JOE HUFFORD

ATTORNEY AT LAW

15 Boggs Building Phone 273

GEORGE E. MARSHALL ATTORNEY AT LAW

Boggs Building

McNAMEE & McNAMEE ATTORNEYS AT LAW

Offices: 421 Pacific Electric Bld'g
Los Angeles, California, and
LAS VEGAS, NEVADA