

# Joshua National Monument Named

Joshua Tree National Monument lies in Riverside and San Bernardino counties, south of the Mohave desert and includes approximately 825,340 acres. This new unit in the national park chain presents a notable example of basin and range physiography which is a geological feature formed by block faulting and subsequent extensive erosion under desert conditions.

The rounded elongated mountain ranges of the region rise from saucer-like valleys to heights of approximately 1,000 feet. They do not dominate the landscape with precipitous sides, but their subdued slopes sink gradually into the rock debris weathered from their slopes—the mountains gradually burying themselves and building up the plain.

Many varieties of desert flora abound in the newly created monument. Among them is the rare and rapidly diminishing Joshua tree, one of the most spectacular floral features of our western deserts. Yucca brevifolia is the botanical name for this fantastic growth, which belongs to the lily family and attains a height of from 10 to 30 feet. Its greenish-white blossoms, growing in clusters eight to fourteen inches long, are characteristic features of the semi-arid wastes of this land of mountains and deserts. A representative stand of this plant which is very limited in distribution occurs within this area and will thereby be protected from commercial exploitation. Among its uses are the manufacture of surgical splints, protectors for fruit trees, and even fuel.

The Mormons gave this giant Yucca the name of Joshua tree, seeing in its extended branches a symbol pointing them to the promised land they were seeking.

Other rare and beautiful desert flora also are native to this section, which though possessing little industrial worth, is rich in scientific, scenic, and recreational values. From Inspiration Point in the San Bernardino mountains, one of the most extensive desert views in the west is obtainable.

The Joshua Tree National Monument lies northwest of Desert Center. The proposed International Four States Highway between Desert Center and Rice follows close to the east boundary of the monument, as does the Los Angeles Metropolitan Aqueduct, now under construction. The new thriving desert city of 29 Palms is on the north line of the Joshua Tree National Monument.

# Dedication Of San Simeon Way

Taking its place along with other famous scenic attractions of the Golden State, the San Simeon-Carmel coast highway is to be officially dedicated next Sunday, June 27, after 18 years of laborious construction that will stand as a monument to the engineering skill of the California state highway department.

Motorists and state officials head-

# WHAT NEXT?



To make "dressing up" a less painful process for men, shirt and vest are now being made in one unit. Suitable for full dress or tuxedo wear, this innovation has found favor among those who are required to make quick changes in costume. As might be expected this two-in-one garment was first introduced in the movie colony.

ed by Governor Merriam and Public Works Director Earl Lee Kelly, will pay homage to the men who first conceived and fostered the dream of the "road that couldn't be built" at the opening ceremonies. Celebrating the opening of the new highway at San Simeon at 10 a. m., the caravan will motor north to Big creek for memorial services there for the late Senator Elmer Rigdon of Cambria who fathered legislation making the construction possible. Dr. J. L. D. Roberts, a country physician who first proposed the road back in 1897 against heavy opposition, will participate in the dedication as an honored guest.

At Pfeiffer park an old-time Spanish barbecue will be held at 1:45 p. m. to conclude the celebration.

Justus F. Craemer, assistant director, department of public works, informed the Automobile Club of Southern California that final oiling operations on a 30-mile stretch are being rushed and are expected to be completed for the opening.

Literally blasted out of solid rock on perpendicular cliffs that hug the shore, the new road presented almost insurmountable difficulties. Built at a cost of approximately \$9,000,000, the project called for 32 bridges, including the world's largest single concrete span over Bixby creek. The scenic drive is dedicated primarily to motoring enjoyment and is among the first to be zoned for its entire length to prevent commercialism.

Prediction that the 92-mile engineering achievement would rival the world's best known highways for scenic lure was made by Automobile club scouts who recently previewed the highway.

From San Simeon the road edges the far-flung Hearst ranch for 30 miles, always in sight of the sea. As the route continues northward, an ever-changing vista of rocky

shores, pine-covered crags, deep canyons, waterfalls, streams and redwoods unfold to enchant the motorist

The entire length from San Luis Obispo to Carmel is approximately 136 miles and it now presents an attractive alternate for those touring on the coast route. Although it is shorter than U. S. highway 101 via King City and Salinas, it is longer in point of travel time since the very nature of the country prohibits speed attainable on the main state highway.

# West Home Loan District Is Fifth

The Twelfth District Federal Home Loan Bank is now fifth in the system in volume of total advances outstanding to members, according to M. M. Hurford, president.

The bank passed the \$10,000,000 mark in outstanding advances on June 19, when the figure reached a

new peak of \$10,004,258. Mr. Hurford stated further that the Twelfth District, comprising the states of Arizona, California and Nevada and Territory of Hawaii, leads all the other districts, with the exception of New York, in number of dwelling units constructed during the past sixty days, according to building permit information available in the June issue of the Federal Home Loan Bank Review.

"A total of \$21,905,764 has been advanced to Twelfth District member institutions since the bank opened in October, 1932, of which \$11,901,506 has been repaid," Mr. Hurford added.

Insurance companies, savings banks, and building and savings and loan institutions are eligible for membership in the Federal Home Loan Bank system, which is a credit reserve institution comparable in its functions to the Federal Reserve system.

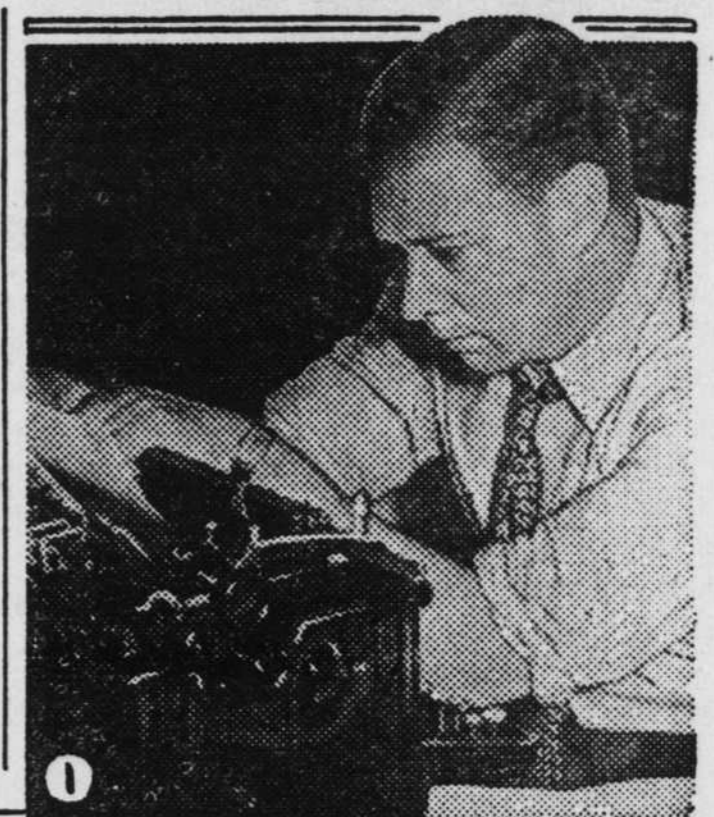
A whale's hearing is so acute that a ship crossing its track half a mile distant will cause it to dive instantly.

# Named Best All-Around Mikeman

HARRY VON ZELL, the West Coast boy who made good as a big time announcer, has just been selected by broadcast officials and critics as "radio's best all-around performer."

This title has been conferred upon von Zell in recognition of his amazing versatility as an announcer, actor, singer, script writer, production director, radio executive and all-around adaptability. Last January, radio editors, in a nationwide poll, voted Harry the outstanding announcer on the networks.

An all-around man in every way, Harry von Zell started in radio as a singer, quickly developed into a top-notch announcer. Comedian Fred



Here's Harry von Zell, radio's most versatile star, (1) writing his broadcast script, (2) interviewing a guest star and (3) On The Air.

Allen discovered his talent for comedy and used him with the Mighty Allen Art Players. Phil Baker gave him even more important assignments and so did Stoopnagle and Budd. With the latter, Harry revealed his skill as a writer of comedy sketches.

As reward for his outstanding versatility, Harry has been promoted to stardom. He will be starred in his own variety series this summer over the Columbia network. His show replaces comedian



Phil Baker Sunday evenings at 7.30 p.m. E.D.S.T., beginning July 4, for the hot weather cycle.