

Huge Relief Sum Unspent

An unexpended balance of \$1,581,288.19 remains in the \$14,677,446.07 allotment made to Nevada from the emergency relief appropriation acts of 1935 and 1936, as of March 31, 1937, Frank W. Ingram, state director for the NEC, announced recently.

During the period from April 8, 1935, to March 31, 1937, a total of \$14,677,446.07 was allotted to the state, and, from this total, \$13,096,178.70 was expended in carrying out the federal works program.

The report shows that \$5,265,888.36 has been expended for personal

services, \$1,207,401.88 for supplies and materials, \$71,943.39 for rent, \$254,288.19 for construction, maintenance and repair contracts, \$5,082,490.63 for grants, \$654,238.95 for contractual services, \$252,249.58 for equipment, \$298,757.59 for loans, and \$8,910.13 for employees' accident compensation.

A breakdown itemization of the funds, according to the types of work carried out, follows: \$348,179.37 for highways, roads and streets; \$387,049.58 for public buildings; \$931,196.18 for public recreational facilities; \$4,845,315.01 for conservation; \$277,416.85 for electric, water and sewer systems; \$46,741.37 for transportation facilities; \$316,672.90 for educational projects; \$712,299.62 for miscellaneous projects; \$348,290.29 for administrative expenses; \$295,627.24 for rural resettlement and direct relief, and \$1,087,400 for grants to states for relief.

GEORGE VI RESIGNS HIGH MASONIC OFFICE

It has been announced that His Britannic Majesty George VI, who as Duke of York, was installed Grand Master Mason of Scotland last November just prior to the abdication of his brother, has presented his resignation to the Grand Lodge of Scotland. In this he is following the precedent set by his royal grandfather, King Edward VII, who resigned his office as Grand Master of the United Grand Lodge of England shortly after he assumed the Throne.

The resignation will be acted on at the regular quarterly meeting of the Grand Lodge on the first Thursday in May. It is expected that Sir Ian Colquhoun, whom the Duke of York succeeded as Grand Master Mason, will resume the office for the balance of the year, although the Grand Lodge may decide to hold an election for the purpose of filling the vacancy.

Big Jim Group Is Said Sold

The Big Jim group, located in the Sawtooth district, between Jungo and Sulphur, comprising 18 quartz claims, was sold on a bond and lease arrangement to Dr. W. L. Withers, Salt Lake City dentist, and associates, reports the Humboldt Star.

The group is located on the west hillside at the mouth of the canyon in the Sawtooth district in which the Ore-Neva company has done considerable placer mining. The Ore-Neva placer ground is owned by John G. Huntington and associates, who plan further development on the property this year.

Dr. Withers and associates plan to drive a tunnel 100 feet in length. A compressor was shipped from Salt Lake City Monday and is expected to arrive at the Western Pacific siding near the property within the next few days.

After its arrival and installation, two shifts of eight men will be employed to drive the tunnel. James Garnier, owner of the ground, has been named superintendent by Dr. Withers and associates. A substantial down payment was made to Garnier and the remainder is due over a period of 14 months.

Dr. Withers was in the district from Wednesday to Sunday, returning to Salt Lake Sunday night. He plans to return within the next few days after the compressor is installed and work is started on the tunnel.

With the announcement of the sale and purchase of the Big Jim group, it was learned that Herbert Hoover, former president, and R. F. Hanna, Standard Oil official, are developing a group of claims in the north end of the district. Following wide publicity given Hoover, who with Hanna, was interested in developing a group of claims near the

Austin property in the Awakening district, they have been secretive about their operations in this area. J. D. McPherson, engineer for Hoover and Hanna, who resides in Lovelock, is in charge of the development work.

Premium Taxes Hit New High

CARSON CITY. — A new all-time high in state receipts from insurance agents' licenses and premiums taxes has been reached this year, Henry C. Schmidt, state controller and insurance commissioner, announced.

From insurance licenses the state has taken in \$25,519.25 since the first of this year and premium taxes have amounted to \$34,736.47 for a total of \$60,255.72.

With eight months of the year yet to go, Schmidt estimated that more than \$70,000 will be taken in from this source.

For the entire year of 1936, Schmidt pointed out only \$55,391.42 was realized in revenue from insurance agents and premium taxes.

The state controller, now compiling his annual report, said that life insurance companies in Nevada last year sold more than \$4,250,000 worth of insurance and paid out more than \$1,000,000 in policy claims.

Premiums collected last year amounted to \$4,200,000, he said.

Schmidt said the money realized by the state this year from insurance was by far the highest in the history of the state.

WOMEN EARN GOOD PAY Mailing, Addressing OUR FREE Catalogs FROM HOME. Everything Supplied Including Stamps. Write, enclosing stamped addressed envelope. Nationwide Distributors, 401 Broadway, N. Y.

Brilliant Calliopsis Is Easily Grown



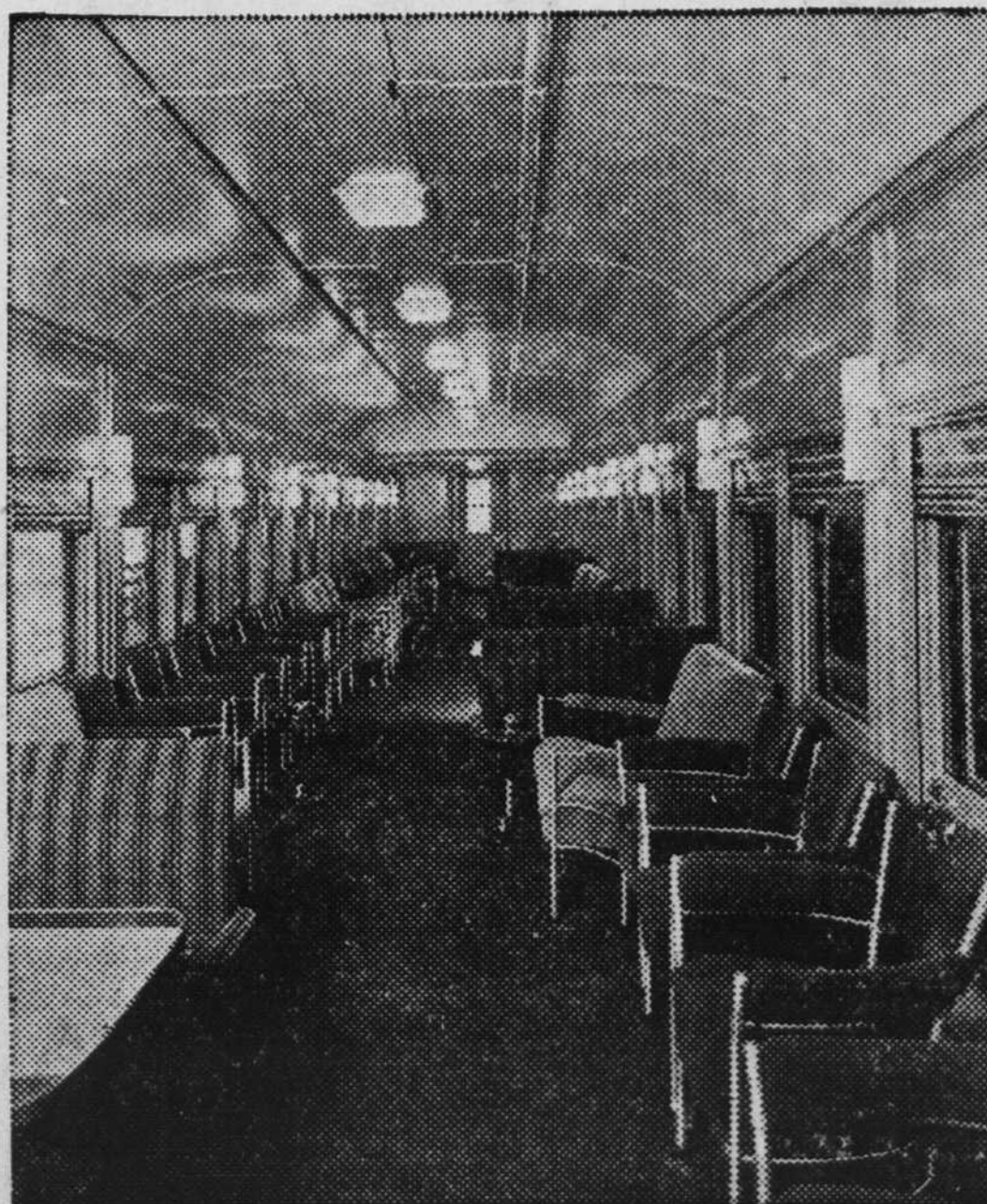
Calliopsis, one of Best Annuals for Cutting.

One of the gayest flowers to be found in any garden, and one hardy enough for almost any climate, is the calliopsis. Formerly known as coreopsis, the true name for the perennial strain, it has recently been developed to new heights as an annual, and is known for its wiry stemmed blooms brilliantly colored in yellow and maroon and crimson. For table bouquets it is unsurpassed.

The rich red types are most effective for garden decorative purposes, but they need the lightening touch of the yellow trim to set them off properly. Most of the varieties have this trimming, differing in widths and intensity, with a maroon, scarlet or crimson center. A nice arrangement is to have the tall varieties in the center of a bed, with the dwarf types on the perimeter as an edging.

Calliopsis may be planted early or late, and because of their rapidity of growth, they are particularly suitable for the late planting when some other flower has failed. Soil conditions do not matter so much—they will grow anywhere—but they demand plenty of sun. Plant them where they are to grow, as transplanting is not always satisfactory, and when they have made a fair growth, thin them out to 12 inches apart for the tall varieties, and from 6 to 8 inches for the dwarfs. When midsummer comes, the blooms will form a solid mass, covering the foliage almost completely.

Rail Research Produces New Type Lounge Car



Appeals to Entire Family

Grandma, grandpa, baby and dolly all enjoy the new comforts on the lounge cars which the Union Pacific has installed for sleeping car passengers on the famous "Challenger" low-cost trains. Unusual size of the car, restful lighting and modernistic decoration all are the result of extensive experiments and research by the Union Pacific. Note the four special sections for card games and the comfortable chairs and lounges of varied size. Such cars with novel comforts and conveniences also will be regular features of the new "Challenger" trains which go into service between Chicago and Pacific coast points soon.