

TWA Announcing Royal Sky Fleet

Faster air passenger service across the United States in the new TWA Luxury Sky Sleepers over the shortest and fastest coast to coast route will be inaugurated May 1, John B. Walker, traffic vice-president, announced following release of official test flight figures showing the new Super-Skyliner as the No. 1 transport in commercial aviation.

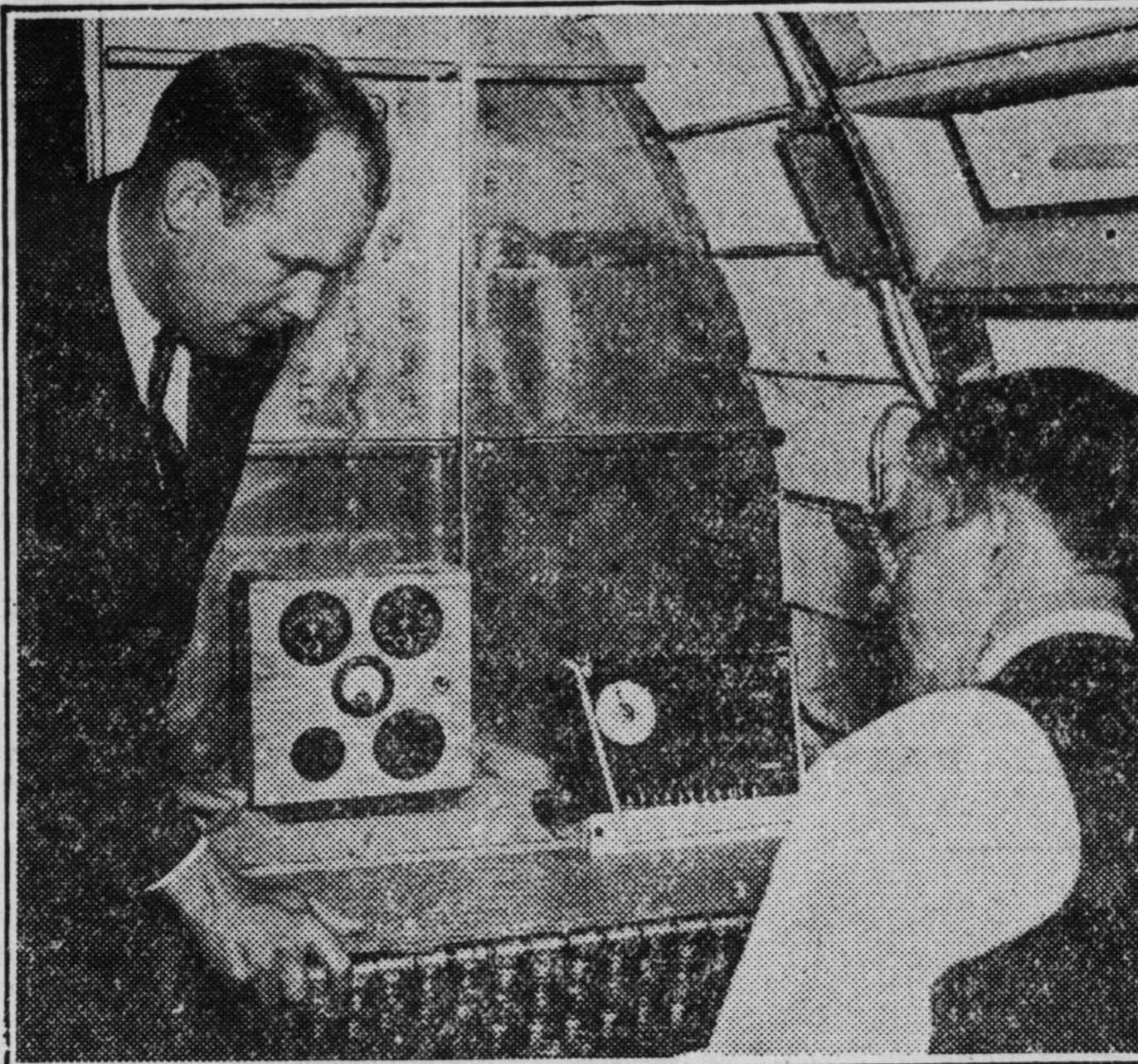
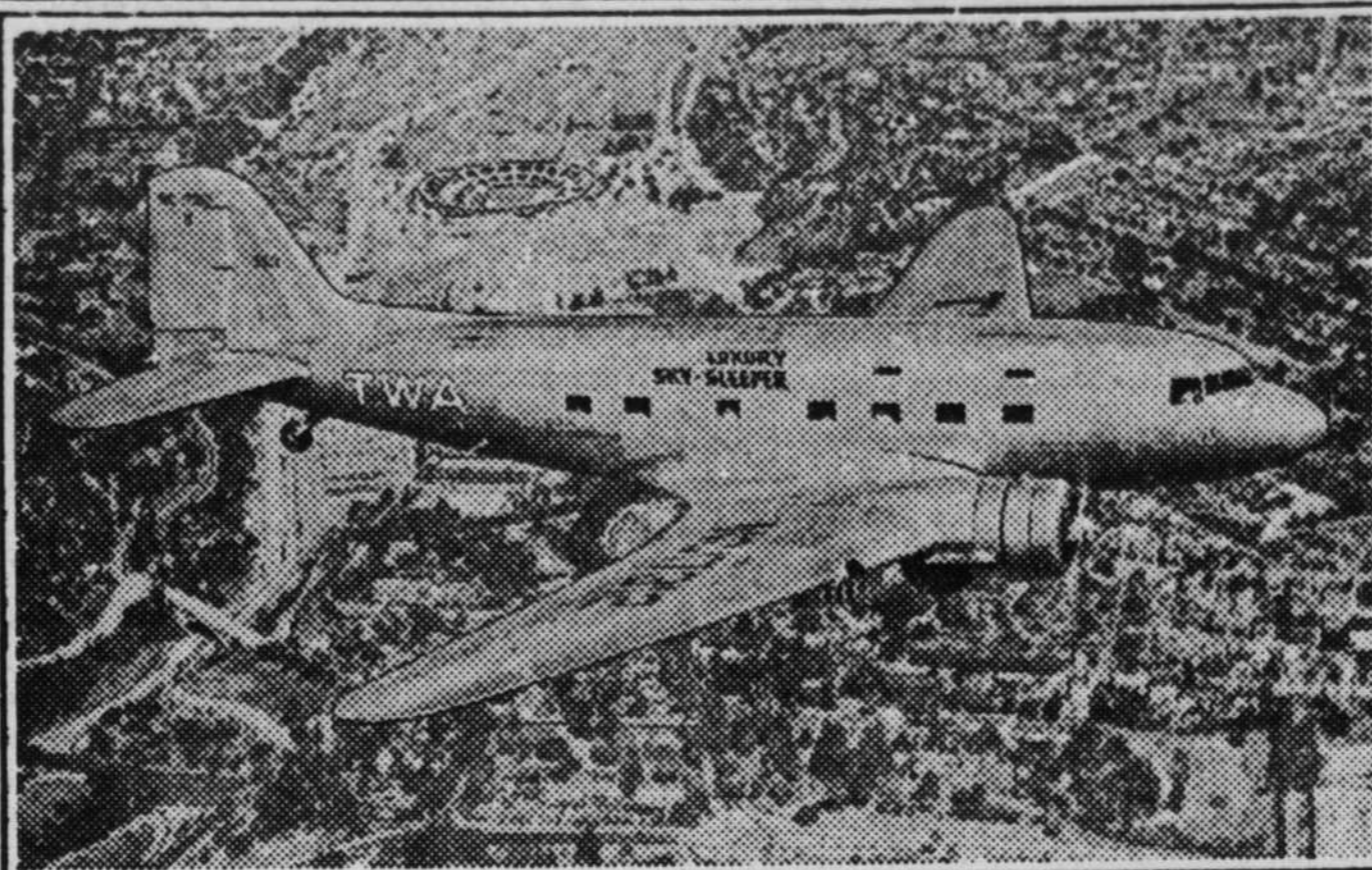
"Something entirely new in interior accommodations will be installed in the new Royal sky sleeper fleet as fast as the planes are delivered from the Douglas factory," said Walker. "Eight berths and nine divan chairs, plus refinements never found in an airplane before, will be built into the cabin."

Performance figures of the new TWA sky giant compiled following 15 hours of exhaustive tests conducted over southern California by the government, Transcontinental and Western Air, Inc., Douglas Aircraft and Wright Aeronautical engineers, show the new sleeper first in speed, power, gross loading, landing and take-off distances and time, and single-motor operation, officials said.

"The speed of the craft fully loaded to its 24,800 pound capacity, is 218 miles an hour, and with one engine the speed is 128 miles an hour, more than half its high speed, at a ceiling of 8,500 feet," said Harlan Hull, TWA chief pilot, who was a member of the test flight crew. "Absolute ceiling is 24,000 feet and on one motor with normal operating load the ceiling is 10,500 feet."

Flight test figures showed 1,100 rated horsepower each for the two new Wright motors, most powerful power plants of their type in the world. The motors have a 1,205 spurt horsepower, giving a take-off reserve of 205 horsepower, and for

NEW "QUEEN" of TWA ROYAL FLEET



Top view shows the luxurious new 17-passenger TWA Super-Skyliner during government flight tests over Pasadena's Rose Bowl, proving the Sky Sleeper to be first in speed, gross loading and power; and best in performance in take-off and landing distances, absolute and service ceilings, climbing time and single-engine characteristics. Top speed is 218 miles an hour with a gross load of 24,800 pounds. The plane can fly on only one motor at a speed of 128 miles an hour. With twelve sister sky giants, the Royal fleet will further reduce present flying time of 15 hours over TWA between Los Angeles and New York City on May 1st. Lower view shows TWA Chief Pilot Harlan Hull and Engine Inspector William S. Goodwin with eyes glued to special auxiliary instruments in cabin of the Super-Skyliner during rigid tests of plane, controls, motors and instruments that required 15 hours of flying over Southern California. TWA will further test the new fleet another 100 hours over its system before establishment of service.

cruising speed a reserve of 655 horsepower, or 55 per cent of available power.

Other performance figures released show a landing speed of only 64 miles an hour; a climb of 1,050 feet per minute at sea level; a take-off distance of only 900 feet, and a landing distance of only 1,640 feet. On one engine the climb rate is 275 feet per minute, or 30 per cent better than its nearest competitor-type transport.

"One of the most important results of the flight tests was the astonishing smoothness of the motors in developing such tremendous horsepower," declared Chief Pilot Hull. "It is unquestionably the finest airplane our pilots have ever operated. Reliability factors in the new TWA Sky Sleepers are greatly increased. The new type of carburetor which prevents icing, combin-

ed with the new automatic mixture control and constant speed propellers, afford an unsurpassed motor operating combination."

Every known scientific device to aid air navigation will be installed on the new Royal fleet, according to Jack Frye, president of TWA. This will include the famous TWA homing loop and radio direction finder, perfected last winter and installed on the 27 Skyliners operated by the company between New York, Chicago and New York-Los Angeles.

Color combinations aimed to please feminine air travelers will also be built into the cabin interiors of the new fleet, according to Walker, who said that women now constitute 30 per cent of air travelers and their influence strongly affects the remaining 70 per cent.

After cabin interiors have been completed next month, the new

planes will be given further testing by TWA before passengers are carried when 100 more hours will be flown over the system to thoroughly acquaint pilots and operating personnel with the craft.

LAS VEGAS WEATHER

Following are the maximum and minimum temperatures as registered by the thermometers of the government cooperative weather station at Las Vegas:

	Max.	Min.
March 8	80	39
March 9	78	42
March 10	87	43
March 11	80	45
March 12	68	53
March 13	61	39
March 14	70	42
March 15	72	48
March 16	64	50
March 17	70	40
March 18	62	48
March 19	68	48
March 20	70	40
March 21	75	33
March 22	59	49

Precipitation recorder was .03 inch on the 12th and .15 on the 22nd.

How to EASE a COLD FOR 15¢



TWO SIMPLE RULES

INSTEAD of buying costly medicines to relieve the discomforts of a cold, try the way almost any doctor you ask will approve as the modern way — genuine BAYER ASPIRIN. It now costs only 15¢ for a dozen tablets, or two full dozen for a quarter.

The way you use it is this: Two BAYER tablets the moment you feel a cold coming on, taken with a full glass of water. Repeat, if necessary, according to directions in package. If at the same time, throat is sore, gargle with three Bayer tablets in 1/2 glass water for almost instant relief. Bayer Aspirin acts to fight fever, and the aches and pains of a cold. Relief comes quickly. Ask your druggist for genuine BAYER ASPIRIN by its full name — not the name "aspirin" alone.



15¢ FOR A DOZEN
2 FULL DOZEN FOR 25¢

Virtually 1c a Tablet

EL PORTAL

PROGRAM

Sunday, Monday, Tuesday and Wednesday
March 28, 29, 30, 31

The World's Singing Sweethearts

NELSON EDDY
JEANETTE MACDONALD

"MAYTIME"

—With—
John Barrymore
Tom Brown
Herman Bing

Thursday, Friday and Saturday
April 1, 2, 3

The Tenderest Romance of Our Time

SIMONE SIMON
JAMES STEWART

"SEVENTH HEAVEN"

—With—
Jean Hersholt
Gregory Ratoff
Gale Sondergaard
John Qualen
Thomas Beck