

NEVADA STATE MINING NEWS

PIOCHE GROUP ENTERS NEW AREA

RENO — Announcement was made late in the week at Tonopah that the Virginia Louise Mining Co. had taken over by purchase a group of four claims at Manhattan, adjoining the Gold Metals property. The claims were bought from George Ferrick, who is to remain in charge as superintendent for the company.

Virginia Louise formerly operated on a large scale in the Pioche district, where its property, adjoining the Prince Cons, is estimated to

COPPERMINES CORP. IS AWARDED \$500,000 IN COURT SUIT

Holding that the Consolidated Coppermines Corporation was entitled to judgment against the Nevada Consolidated Copper Corporation in excess of \$500,000, Judge Frank H. Norcross of the Nevada federal court has handed down a lengthy opinion and judgment in the famous suit, according to a Gazette report.

The suit was instituted several years ago by Nevada Consolidated against Nevada Coppermines Corporation, holding adjacent property between Ruth and Kimberly, to prevent the latter firm from working in certain ground in the vicinity of the Ruth Pit. Nevada Consolidated won the original suit and the judgment therein was affirmed by the circuit court of appeals.

Consolidated Coppermines retaliated with a file of 14 counterclaims, asking about \$2,000,000.

The case was before the court for 140 days. Various of the counter claims were dismissed during the proceedings. The largest judgment given the Consolidated Coppermines Corporation was \$413,000 for alleged excess payments made to Nevada Consolidated on account of operating expenses. — Ely Record.

ASHBY LEASERS MAKE SHIPMENTS TO SODAVILLE MILL

Johnson and Withers, leasing at Camp Ashby, 16 miles southeast of Hawthorne, have completed the hauling of 75 tons to the Kernick mill at Sodaville.

Nick Lusich, also leasing at Ashby has shipped five tons highgrade to the Sodaville mill. Five or six leases are actively operating at this new camp and preparations are being made to continue operations throughout the winter. —Tonopah Times.

BANNOCK CLAIMS NOW DEVELOPING

Near the old camp of Bannock, south of Battle Mountain, development work is in progress and camp buildings have been prepared for winter work on the Cold Cash and No Money claims, lately acquired under lease and option by C. W. Reese, J. A. Madison, A. J. Nelson and L. L. Lyman.

A good road has been built to the claims, on which some ore of high grade was exposed during the summer by the owners. Bannock was the scene of a small gold rush some 25 years ago, but since that time little work has been done in the immediate district. —Nevada State Journal.

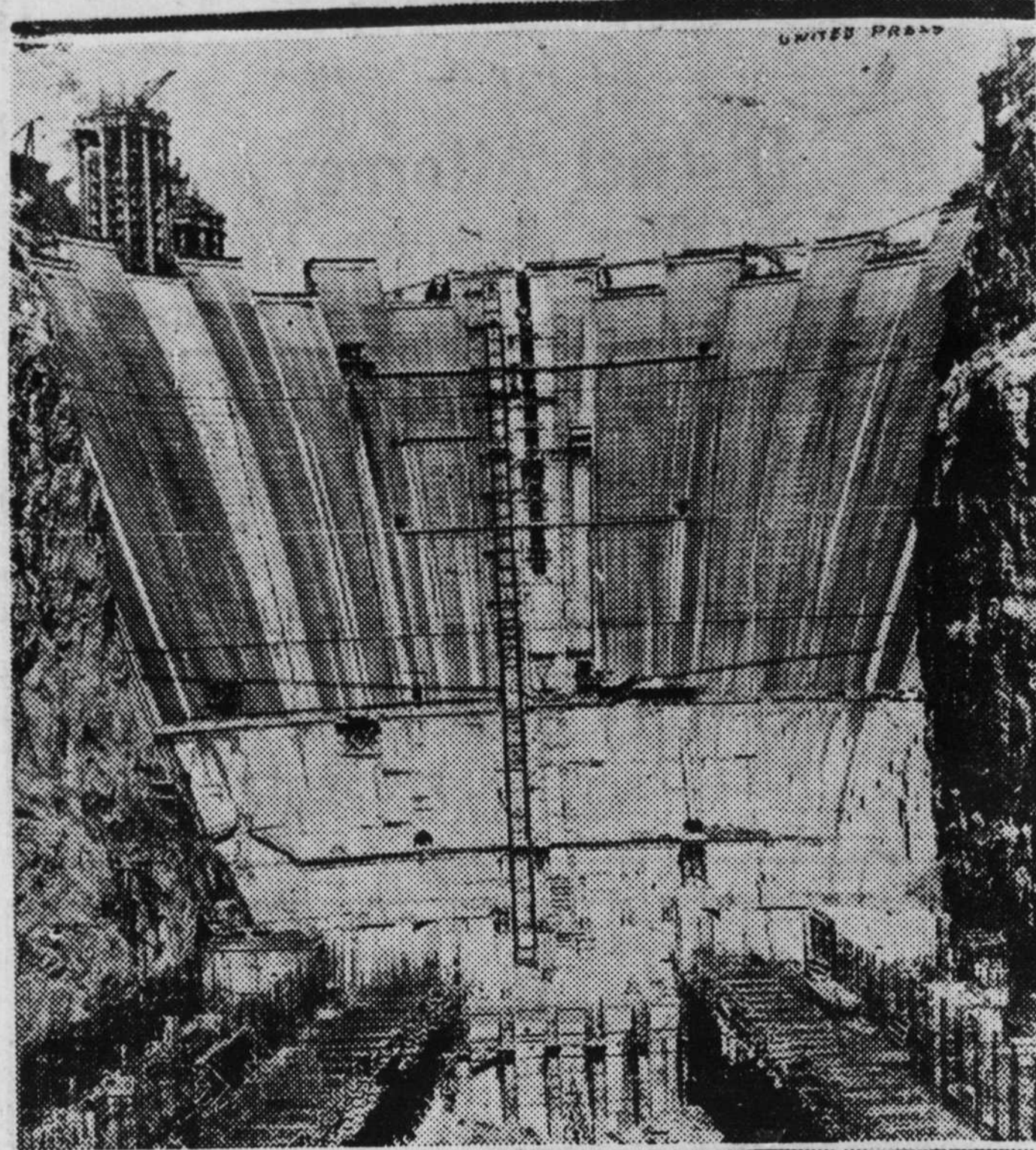
have produced over \$3,000,000, chiefly in fluxing ore that was shipped to Utah smelters. Later it operated at several points in Arizona, but its production in recent years is said to have been negligible.

Several years ago the Virginia Louise company won a judgment in a trespass suit brought against the Prince Cons, but the dispute was later settled out of court. The company's main offices are said to be in Los Angeles. —Western Mineral Survey.

REPORT SNOW AT DEER CREEK

Forest Ranger Fitch and his wife were in the city Wednesday and report a good fall of snow in the Deer Creek area.

Boulder Dam Nears Completion



This striking view shows the face of Boulder Dam from the downstream side. The dam now rises to a height of nearly 600 feet. The gigantic project is expected to be completed and ready for operation in another 18 months or 2 years.

MINE CONGRESS SEEKS AID FOR U. S. BUREAU OF MINES

Rehabilitation of the U. S. Bureau of Mines, long and urgently agitated by the western precious metals industry, has suddenly become an outstanding issue at the Washington headquarters of the American Mining Congress, a body that has been regarded by western miners for years as an organization of coal interests, with a negligible copper alloy. Until the recent sessions of the Western Division of the Congress at San Francisco, the parent body has manifested scant interest in the welfare of the western miner and apparently was little concerned as to the support accorded the Bureau of Mines.

A revived industry in the far western states, stimulated by higher prices for the precious metals, lent such importance to the San Francisco meeting as seemingly to impress the eastern officials with the expediency of enlisting western interest in their organization, in the form of paying memberships. These memberships are being solicited in a form of letter sent to western mining men by James F. Callbreath, secretary from the Washington office of the Congress. —Nevada State Journal.

REPORT NEW VEIN IN SPRING VALLEY

A report from Silver City late in the week stated that the shaft of the Spring Valley mine, below the Dayton, had unexpectedly entered a new vein at a depth of 170 ft., about 100 ft. west of the wide vein developed on the 100-ft. level, and that the bottom of the shaft was all in ore sampling over \$16 per ton. Manager H. B. Blumer was said to have

been unaware of the existence of the newly opened vein, the discovery of which has aroused keen interest in the district. —Nevada State Journal.

Coach Comfort TO CHICAGO



In ultra-modern thru coaches, roomy and smartly decorated—restful seats and off-the-tray service at meal-time. Fast, safe, enjoyable and economical.

In Tourist Sleeping Car only \$44.36 (berth extra) from Los Angeles. Correspondingly low fares from other points. Equally low fares EVERYWHERE—and the low fares are good on the—

LOS ANGELES Limited

This luxurious Union Pacific flyer is famed for its Speed and superiority of Service. It traverses the direct scenic route to the East, over the Smoothest Roadbed in the World.

Visit Boulder Dam enroute—served only by Union Pacific—at no extra cost, except \$1.75 for motor tour.



Our travel experts will gladly assist in planning a most interesting journey for you.

UNION PACIFIC

J. H. DAVIS, Agt.
LAS VEGAS, NEVADA

Why Doctors Favor a Liquid Laxative

A doctor will tell you that the careless use of strong laxatives may do more harm than good.

Harsh laxatives often drain the system, weaken the bowel muscles, and even affect the liver and kidneys.

Fortunately, the public is fast returning to laxatives in liquid form. The dose of a liquid laxative can be measured. The action can thus be regulated to suit individual need. It forms no habit; you needn't take a "double dose" a day or two later.

Dr. Caldwell's Syrup Pepsin gently helps the average person's bowels while nature is restoring their regularity. Why not try it? Some pill or tablet may be more convenient to carry. But there is little "convenience" in any cathartic which is taken so frequently, you must carry it with you, wherever you go!

Its very taste tells you Dr. Caldwell's Syrup Pepsin is wholesome. A delightful taste, and delightful action. Safe for expectant mothers, and children. At all druggists, ready for use, in big bottles.