

## Ransom Handler?



Isador Fisch, German-American furrier, who died in Leipzig last year, and from whom Bruno Hauptmann claims he received the Lindbergh ransom money.

### PIOCHE COMPANY IN MANHATTAN DISTRICT

Officers of the Virginia Louise Mining Co., formerly operating on a large scale near Pioche, are said to have been examining properties at Manhattan, Nye county, with a view to centering the company's operations in that district.

—Nevada State Journal.

### TRY THE

LAS VEGAS AGE

FOR ADVERTISING RESULTS



"He that stays in the valley will never get over the hill."

### OCTOBER

- 1—Count Zeppelin makes first successful flight, 1900
- 2—Start of the great Boston, Mass., fire, 1711.
- 3—First Canadian troops sail for France, 1914.
- 4—Rutherford B. Hayes, 19th President, born 1822.
- 5—German retreat in Champagne starts, 1918.
- 6—50,000,000 marks equal one dollar in Germany, 1923.
- 7—Three-mile horse railway starts in Quincy Mass., 1826.

### EASTERN MEN VIEW VEIN IN COMO TUNNEL

New workings of the Como Mines Co., eight miles south of Dayton in Lyon county, were inspected during the past week by several eastern men who are heavily interested in the big project and who are outstanding figures in eastern financial circles. J. H. Holmes, head of a Pittsburgh, Pa., brokerage firm bearing his name and member of the New York Stock Exchange, expected to remain here for a fortnight but after a stay of several days was recalled to his home by the serious illness of his wife.

William Fahnestock Jr., heading and old established Stock Exchange house in New York, has spent several days at the mine, while J. Robinson-Duff and Col. William Frieday of the J. Robinson-Duff firm, prominent Stock Exchange members may remain for another fortnight, having visited the Como Mines property on two or three occasions since the company's major development program was started some seven months ago.

A raise from the northeast lateral, 5100 ft., from the portal of the com-

pany's transportation and drainage tunnel, has holed through to a connection with the Rapidan incline shaft, 350 ft. in depth, the tunnel giving an additional 200 ft. of back on the big vein in which farther to the northwest, a crosscut shows a width of 50 ft. of solid ore between the andesite walls.

Near this point a deep winze is to be sunk to develop the vein in the sulphide zone. The Como lateral, extended southeast from the end of the tunnel to cut the Como-Buckeye vein, is showing seams of quartz and apparently is about to enter the ore channel, considered the most important in the district.

—Nevada State Journal.

### SNOWPLOWS OPEN ROADS

Snowplows Tuesday opened Sonora, Kit Carson and Ebbetts passes, and the roads are again ready for travel, although slippery in many places. Chains are needed, according to the Nevada division of the California State Automobile association. These three high passes, together with the Tioga pass, were closed by the snowstorm Sunday.

—Humboldt Star.

### OLD PRODUCERS BEING REVIVED

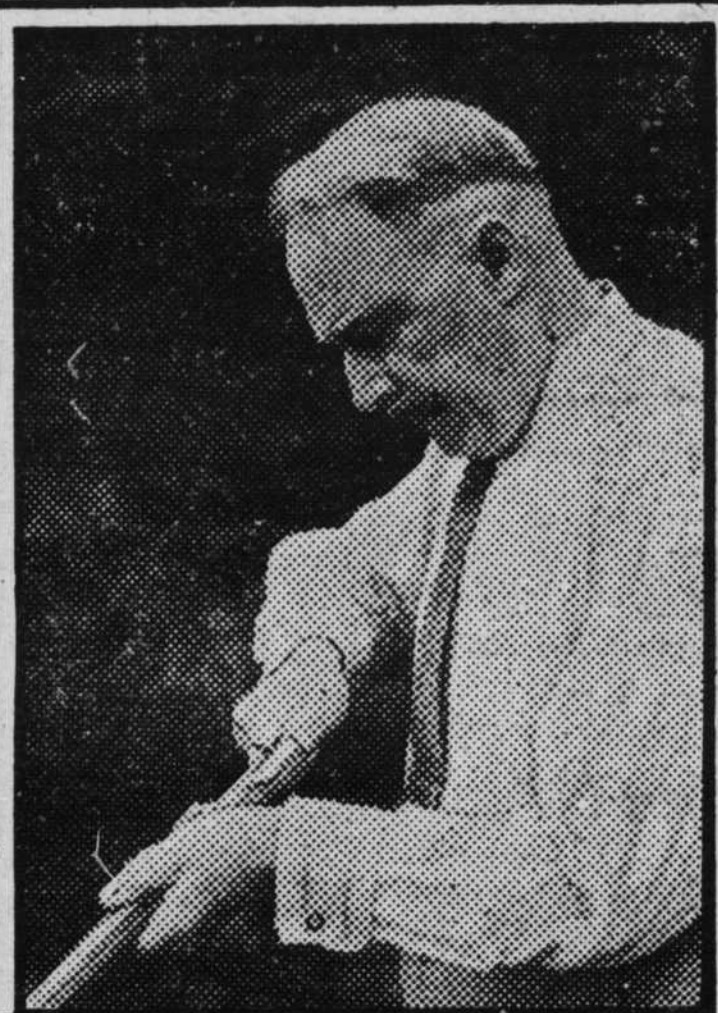
A force of 14 men is reported to be engaged in development work on the old Cumberland mine at Cherry Creek, in northern White Pine county, some 40 miles north of Ely, the property having been acquired recently by Nicholson and Steele under lease and option of purchase.

The road is being repaired to the station on the Nevada Northern railroad, five miles to the east, in preparation for bringing in equipment. The Cherry Creek district, discovered in 1863, was an important producer of gold, silver, lead and copper for a number of years.

—Nevada State Journal.

## The SNAPSHOT GUILD

### MEMORY INSURANCE



Left: Granddad is having his picture taken, obviously and painfully. Right: we see him as he really is—a snapshot portrait of real charm.

LAST week, the question was asked, "Exiled from home, for what scenes would you be most homesick?" Then came the query, "Have you good snapshots of those scenes?"

The chances are that most of us have neglected to make pictures of the things that mean most to us. And the time will come when we shall want those pictures very much.

Memory insurance costs little, yet it's priceless.

Make it a habit, then, to picture the scenes and happenings that have the makings of rich memories in them. Oddly enough, those scenes may seem trifling now, but as time passes they will grow in your memory.

And it's an excellent idea to snapshot these subjects in the most natural, everyday manner. See them with your camera, as you see them with your eyes. If granddad habitu-

ally sits in a corner of the yard, whittling, don't get him all dressed up for a picture on the front steps. Get him as he is. You can do it with even the simplest camera.

Sometimes, to get at the essence of a picture, you will need to get quite close to it. If this means focusing closer than your camera permits, get a portrait attachment. This is a very simple, inexpensive, auxiliary lens which is merely slipped over the lens of your camera. With it, you'll be able to get within arm's length . . . so close to your subject that, for example, granddad's face and shoulders will almost fill the film.

### Night Shots Outdoors!

Making pictures at night, outdoors, is easily within the capacity of any snaphooter. And the results are often extremely dramatic and satisfying. We'll talk about it next week.

JOHN VAN GUILDER.

Summer

# BARGAIN FARES

EXPIRE

## OCT. 15<sup>TH</sup>

**GO NOW!**

Return Limit

**OCT. 31<sup>ST</sup>**

Summer travel bargains will soon be over. Less than two weeks to start your journey. Final chance this year for superbly luxurious rail travel at these economy rates. October 15 is the last day to leave (return limit October 31). Low round trip summer fares everywhere via Union Pacific . . . to Chicago, New York, Boston, Philadelphia, the South.

## LOS ANGELES LIMITED

.. NO EXTRA FARE

Go on the train that sets the standard in transcontinental travel. *No Extra Cost* for much extra service. Enjoy the luxurious comfort of the Air-Conditioned Diner, Limousine-lounge Observation Car and Pullman All-room car. You ride on the world's smoothest roadbed when you take the Los Angeles Limited.



Plan your journey with the travel experts of

# UNION PACIFIC

J. H. DAVIS, Agt.  
LAS VEGAS, NEVADA