

NEVADA STATE MINING NEWS

ESMERALDA FIND CONTINUES TO ATTRACT MANY MINERS

Harry Dierk, Dayton, Nevada, mining engineer, arrived in Tonopah the first of the week to visit the New Deal property two miles out of Tonopah, in Esmeralda county, owned by Tom Clark and J. Jerome McLaughlin, where Clark made a sensational gold discovery some months ago, says the Tonopah Times-Bonanza.

Dierk also came to Tonopah to make an inspection of the three claims in which D. F. Meiklejohn, well known Nevada mine operator recently purchased at 60 per cent interest.

Dierk is associated with Meiklejohn in the Wild Rose group of mines, which have developed into one of the large gold properties of the Como district. Interest in the Como section was recently heightened by the cutting of the Rapidan vein of the Como Mines company in the company's mile-long crosscut tunnel.

Development work on the Como Mines property, on the Pony Meadows and on the Wild Rose group is rapidly changing the old Como district from a few comparatively unknown prospects into one of the great potential gold and silver producing areas in Nevada.

G. H. Snyder of Salt Lake City and associates recently closed a deal for three promising properties in the heart of the Como district, Meiklejohn said, and it is expected active development of the ground purchased will be under way within a very short time. The Como district lies about 15 miles east of Virginia City and the veins are identical with the Comstock lode, both in type of ore and size of veins.

In connection with his local project, Meiklejohn is very favorably impressed with the future possibilities of the Clark property and the and plans a comprehensive development of his own ground, potential value of his own ground, ment of the property.

—Goldfield News.

TONOPAH MINES SCHOOL OPENS UNDER J. P. HART

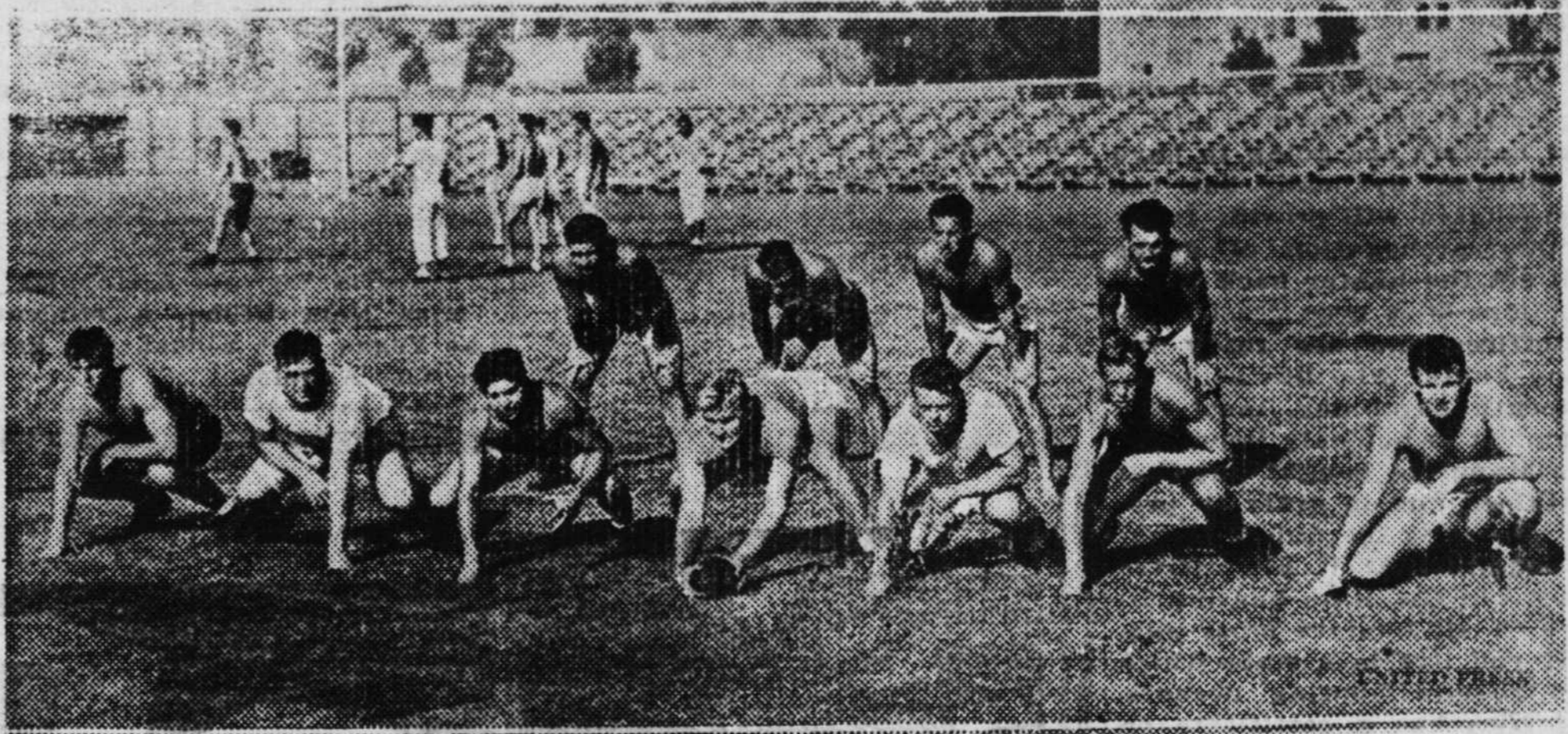
The Tonopah School of Mines, J. P. Hart, instructor, opened last Monday for the fall and winter term. Indications are this will be one of the busiest years at the Nye county mines school. Interest in mining is sweeping Nevada with a new intensity, and the school has been an important factor in a number of mine developments in this area.

Recognizing the need of a shorter and perhaps a more comprehensive prospectors' course, Hart is planning to give such a course this fall, he said. Efforts will be made to avoid so far as possible, technical book study, and more time will be devoted to lectures and personal instruction in class. The new course will embody such instruction best designed to give the student a working knowledge of prospecting in the field—geology, ore testing and other features necessary for actual work in the open hills.

Hart anticipates a big enrollment in his new class, and suggests that all those who wish to become students, apply at the school of mines as early as possible, in order that classes may be assigned. It is likely the classes will meet in the evening, to permit day workers an opportunity to attend.

—Goldfield News.

Navy Won't Look Like This in Two Weeks



Here is how the University of California at Los Angeles eleven looks prior to start of the official practice season. They look tough now, but with the aid of shoulder pads, helmets and all the other paraphernalia they should improve their appearance 100 per cent.

GOLDROADS MINE STARTS REPAIRING ON SHAFT

The Ooaman mining district made another stride this week toward regaining the boom days of 1915-16 when work started preparatory to reopening the famous Goldroads mine which is owned by the United States Smelting, Refining & Mining Company of Boston with western offices at Salt Lake City.

According to L. H. Duriez, formerly of Sunnyside, Nevada, who has been selected as resident engineer and manager for the property installation of a hoist and compressor was started the first of the week and retimbering operations will be commenced as soon as this equipment is ready for operation, which will probably be some time next week.

The old No. 1 shaft located at the rear of the Duntin service station in Goldroads canyon will be retimbered to the 700-foot level and the entire mine will be unwatered which will take several weeks of constant pumping. All the old workings of the mine which are known to contain large quantities of ore will be sampled and rechecked to decide where the most profitable ore is available.

Information as to whether a new mill will be constructed is not available at this time but it is thought that as soon as the preliminary work reaches a satisfactory stage that a new mill will be installed capable of handling a large tonnage of ore. All mills in the Ooaman area are operating at capacity at the present time and are unable to handle the demand of the various leasers.

The United Eastern also started work the first of the week under the management of Jack McIvor, well-known Arizona mining man and one of the old shafts will be retimbered as soon as material arrives which has been ordered.—Needles Nugget.

MANY LEASERS WORKING

Approximately 100 men are reported working 54 leases in various parts of the Tonopah Mining Company property at Tonopah. From this ground the lessees shipped 21 carloads of ore to Utah smelters during August. —Goldfield News.

SHIPMENT OF GOLD-COPPER ORES GOES FROM WALKOVER

Last week another carload of very good gold-copper ore went out from the Walkover mine, eight miles easterly from the old town of Hackberry, this ore coming from the 300-ft. level of the mine. It is also the general impression that excellent gold-copper ore may be had in the old Copper Giant mine, of the Clark interests, but it appears to be impossible to get a lease on this claim.

The lead veins on the Cottonwood Creek claims were in the lime casing of the creek sides and bottom and was rather pure metal. It is the impression that this showing still exists at the point where first found. Just below the Copper Giant are the group of claims formerly owned by James Carter, from which he took considerable gold ore, which was milled at the old Ground place on Yampai creek, which comes in from the east. —Mohave Miner.

GOLDFIELD SHIPS SIX CARS OF ORE IN AUGUST

According to a letter received today from R. S. Titlow, Goldfield & Tonopah railroad company, six 50-ton cars of gold ore were shipped from Goldfield in August.

While Goldfield ordinarily is not included in the so-called "Tonopah area," adding Goldfield shipments to the cars of ore shipped out of this section last month, gives a total of 106 cars, the largest number shipped in any one month in the last three or four years.

Two cars of concentrates were sent out from Tybo.

—Tonopah Times.

OSCEOLA PLACER FIELD IN NEVADA REVEALS RICHES

ELY — Work in the placer fields of Osceola is rapidly progressing with three companies developing their ground and uncovering extensive paying gravel. The Wagner Gold Placer Company has moved its camp from south of Hogum to the Osceola district and is sinking test shafts on the old Bowen placer claims.

C. E. Lang has taken a bond and lease on the property owned by Russell Moyle, Ole Elliott, Dr. G. O. Bradley and Mrs. Foreman and at present has five men working. A shaft four by seven feet is being started on the bench 500 feet below the old shaft south of Dry Gulch. At this point the channel is 160 feet in depth and values as high as \$79 a yard have been obtained. At present the headframe is up and work started on the shaft. Lang plans production, as the placer field already has been proven.

Bill Trent has completed a 60-ft. crosscut across the channel on his placer ground at a depth of 50 ft. the gravel there running \$4.10 a yard. A mile of pipeline has been laid from the well at the old Goode ranch to the placer workings and the 700-foot well, when put into operation pumping water to the mine, will average 700 gallons. Trent's claims are below Monroe Gulch in the Osceola district and at present there are two men employed and gold values are recovered by use of a GB portable wet washer, water being hauled to the mine in a tank until the pipeline can be put into use. —Denver Mining Record.

OLSON & SMITH
CONSULTING MINING GEOLOGISTS
Examinations - Reports - Recommendations
Reasonable Fees

1517 Wilton Place
LOS ANGELES, CALIF.

Phone
ROchester 8977