

PERSISTENCY WINS FOR THIS OLD NEVADA MINER

One of the most persistent mine developers in southern Nevada is A. L. Liddell of Springdale, pioneer resident of the Pioneer-Beatty-Rhyolite section. Three miles west of Springdale, Lidwell is developing a big body of mill ore and at a depth of 100 feet has, he declares, 18 feet of ore exposed in a cross-cut that will sample \$11.50 in gold and \$1.50 in silver.

The vein in which the ore occurs, according to Lidwell, shows for a width of 100 feet on the surface and 800 feet in length. The big deposit occurs in a contact between lime and porphyry, and the 100-foot

NEVADA RANGE CONDITION IS THE WORST ON RECORD

Nevada summer ranges on August 1 were in the worst condition for that date since records have been kept, the Salt Lake City office of the U. S. bureau of agricultural economics has informed the University of Nevada agricultural extension service.

With the drought intensifying and the ranges deteriorating, according to the federal statisticians, low valley and mountain ranges were useless and many higher mountain ranges, where there is some food, could not be covered because of the shortage of stock water.

Many ranchers were finding it difficult to water their livestock, Frank Andrews of the Salt Lake office says. Wild hay, which is now being cut, he states, will run from one-fourth to one-half crop.

Some ranchers, according to Andrews, were feeding their hay to their stock, which has been brought in from the range to prevent starvation.

"Prospects for fall and winter ranges are the poorest on record," he says, "and the food and water situation for the coming fall and winter is the chief worry of stockmen at this time."

Both cattle and sheep were in poorer condition than a month ago, according to the report, and in worse shape than since August 1, 1934.

"Cattle continue to lose flesh and heavy death losses are expected this coming winter," Andrews said, "unless numbers are reduced appreciably or feed conditions change materially for the better."

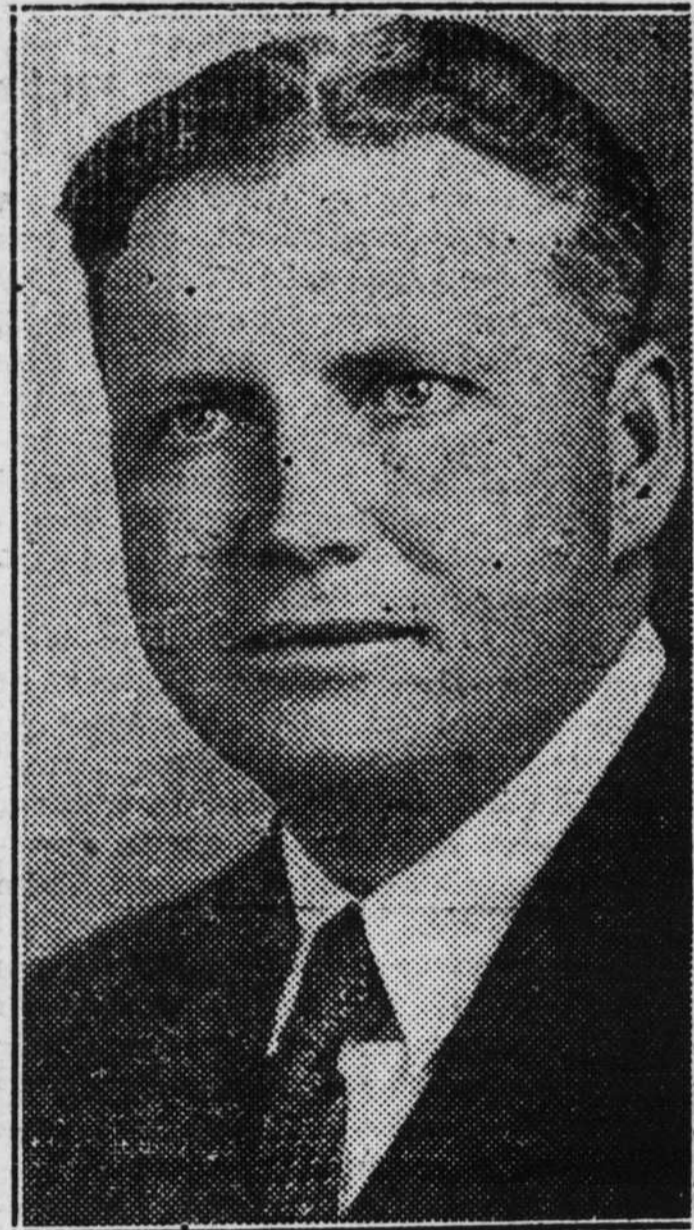
Ewes and lambs were losing flesh and in poorer condition generally, the federal men report, suffering from want of feed and water.

Chief concern of the sheepmen, at present, according to Andrews, is the development of water holes and a reduction in their sheep numbers to meet the winter feed situation.

Reward Faithful Service
By Stamping an "X" After
FRANK M. RYAN
for
STATE SENATOR

shaft is sunk on the hanging wall or lime side of the vein.—Goldfield News.

An Aggressive School Man for Progressive Schools



F. Edgar Mineer
Non-Partisan

Will Appreciate Your Support
For the Office of

State Superintendent
of Public Instruction

SENATOR KEY PITTMAN

CANDIDATE

For Democratic Nomination for

United States Senate

In the Primaries September 4, 1934

JOHN A. COOPER
DEMOCRAT

— for —

GOVERNOR

Fair — Free

PRIMARY ELECTION — SEPTEMBER 4th.

GRAY MASHBURN

INCUMBENT

Democrat for

ATTORNEY GENERAL

RABY J. NEWTON

DEMOCRAT, FOR

State Assembly

PRIMARY ELECTION, SEPTEMBER 4th, 1934

HARRY H. AUSTIN
REPUBLICAN

— for —

District Attorney

PRIMARIES SEPTEMBER 4th, 1934

O. W. YATES
DEMOCRAT

— for —

State Senator

PRIMARY ELECTION SEPTEMBER 4th

O. C. "Clint" BOGGS

DEMOCRAT

FOR SHERIFF

PRIMARY ELECTION, SEPT. 4