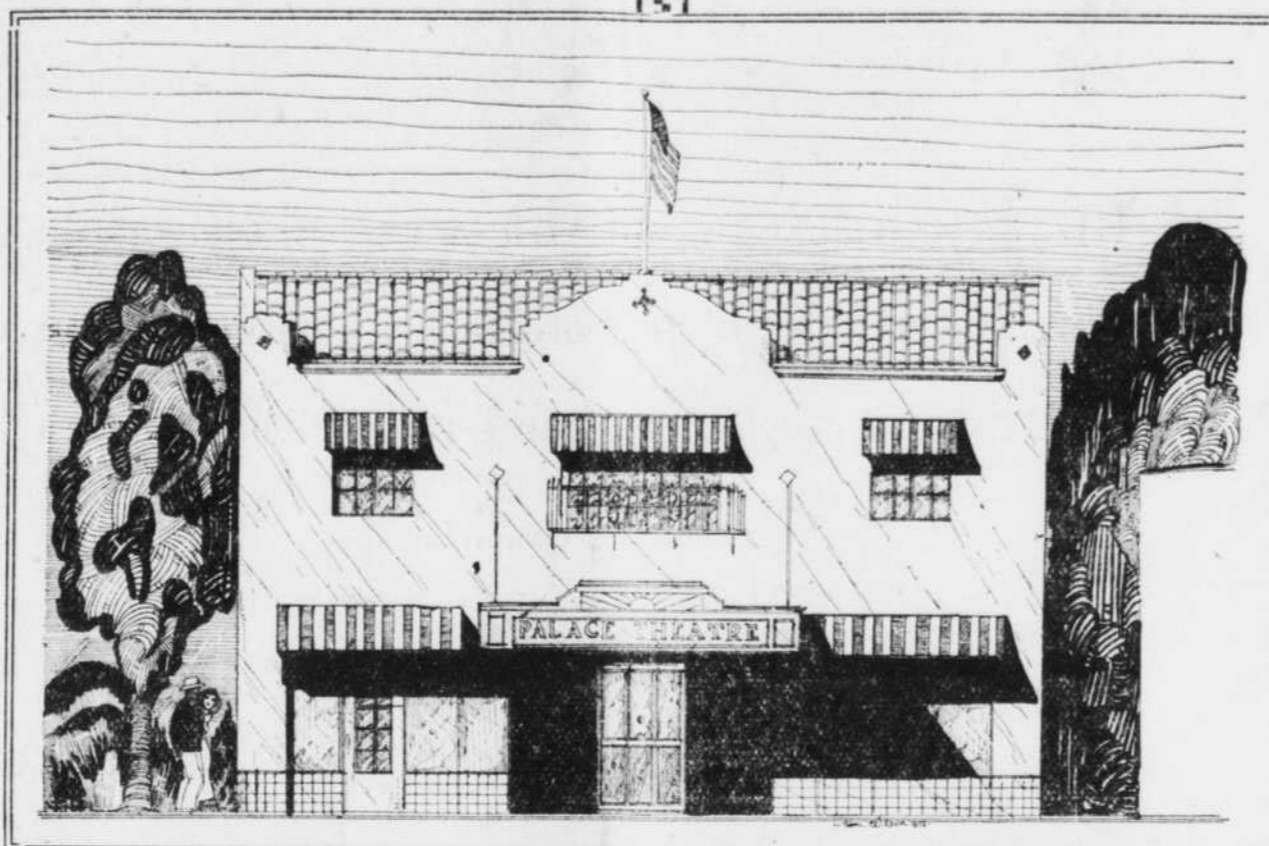


WE BUILT IT!

And we are proud of it--a monument to our skill and ability.

THE
**PALACE
THEATRE**
South Second Street



IT
**OPENS
TONIGHT**
South Second Street

A. L. Worswick
ARCHITECT

Designed and
Planned the
Palace Theatre

Gelber Electric
COMPANY

Wired, Sound Equipped and
Installed Fixtures in this
Modern Show Palace

Ed Von Tobel
LUMBER COMPANY

Supplied Lumber and
Building Materials
For the Palace Theatre

Pioneer Title Insurance
AND TRUST COMPANY

Protected This
Investment With Our
Full Coverage Policy
of Title Insurance

Sam Gage
PLASTERING CONTRACTOR
Plain—Ornamental—Decorative Plastering

Plastered All of
the Beautiful
New Theatre

Wayne Baldwin
Concrete Blocks : Brick : Sand : Gravel

Supplied and Laid
All of the Blocks in
The Palace Theatre