

JUNE BUILDING TOTAL APPROACHES \$80,000

Week's Permits Cover Erection of Homes, Apartments

Building permits for the month of June total thirty-seven with a proposed expenditure of approximately eighty thousand dollars in the erection of dwellings and business houses in Las Vegas.

Following are the permits issued during the last week:

Ed. Von Tobel will erect a warehouse at 320 South Main street costing \$1,500.

A dwelling costing \$1,750 will be erected at 685 South Third street by George R. Roy. The contractor is G. Frost.

Six hundred dollars will be spent in erecting a dwelling at Second and Colorado streets by D. Schrader.

J. Grimes will build an apartment house at 206-216 South Second street at a cost of \$2,000.

PACT IS SEEN ON DEBT PLAN

WASHINGTON, June 27 (AP)—Officials indicated tonight that a "middle group" agreement might be reached with France on President Hoover's debt moratorium proposal.

This development emerged from an important series of conferences between Acting Secretary of State Castle, Acting Secretary of Treasury Mills, British Ambassador Sir Ronald Lindsay and French Ambassador Claudel. Officials were in conference at the state department until late at night. Previously Mills and Castle had been in telephonic conversation with Secretary Mellon in Paris. President Hoover delayed his departure for Rapidid until nearly dark to keep in touch with developments.

Mills indicated after the conference that the French counter-proposal was unacceptable to this government, but that an adjustment between it and Hoover's original plan would be made. Asked if there is any middle ground upon which the two governments can meet, he said:

"We wouldn't be negotiating if there weren't."

LACK OF LICENSE BRINGS WOE TO 4

Four warrants, issued by Judge Frank M. Ryan Friday, charge A. E. Kennedy, Art Lyn, Carl Bryan and L. M. Robertson, with operating motor vehicles without licenses.

Warswick and I

—drove into EL DORADO CANYON—early yesterday morning—we left Las Vegas at 4:30 A. M.—and I had him back in his office at 9 A. M.—

A. L. Warswick—is one of Las Vegas' leading ARCHITECTS—and he like a hundred other busy business men of Las Vegas—have never seen Nob Hill—the scenic wonder of southern Nevada—some have termed it the GRAND CANYON of Nevada—

—but I am persuading the Las Vegas business men to spend a few hours with me on a trip to NOB HILL—a prominent Physician and Surgeon of Las Vegas will go up with me this week—

A. L. Warswick is working on my plans—for the preliminary buildings—the first unit in my plans for a RESORT and CASINO—but my plans I will unfold to you later—

I AM FINANCING NOW—and it is keeping me busy—

—the shares of the

El Dorado Gold Eagle Mines Ltd.

are still selling at TEN CENTS per share—(par value \$1.00)—

—if it won't be many days now—before I will announce a 50% advance—

—all subscriptions for stock—are entitled to an ORE PRODUCTION NOTE—paying 6%—for the amount of their subscription—these notes are liquidated from 50% of all ore shipments—

—send me your order today— or write for full particulars—

Charles Topping

A Nevada Mining Man of 25 Years' Experience
431 Fremont St.
Cor. 5th St.
Las Vegas, Nevada

—INFORMATION BUREAU— by addressing C. W. Mills in care of this office—you may secure free maps of Clark County and the Boulder Dam—this bureau also issues special reports on any Nevada subjects for \$1.00—

LONG LINE TO PROJECT NOW CARRYING ENERGY

(Continued from Page 1)

project that will bring about the third largest body of water lying entirely within the United States and that will constitute the largest artificial lake in the world. Let it suffice to repeat the hackneyed statement that the Hoover dam and the appurtenant works provided for it constitute by common acceptance the second largest engineering enterprise ever engaged in by the United States, the other being the Panama canal.

MUCH ACCOMPLISHED

The construction in record time of a steel power line by our companies leading across the San Bernardino mountains and the Mojave desert for a distance of 225 miles, with the terminal facilities to make power service available, although an essential part in the whole program, pales into insignificance compared with the tasks yet to be carried through: the building of the miles of the great tunnels through solid rock for the by-passing of the turbulent stream and the rearing of a mass of concrete, steel reinforced, to approximately twice the height of any similar structure built by man, to stop the normal flow of that stream through its natural channel for all time. Yet much has already been accomplished.

The completion of intricate detailed plans and specifications by reclamation service engineers for every item of construction; the rapid building of the railroad to Boulder City by the Union Pacific railway company; the government preliminary construction work and multitudinous operations of the Six Companies, Inc., started even before the project was declared to be legally authorized by the United States supreme court in the Arizona case. All combine to emphasize to a watchful world the outstanding efficiency and speed of American enterprise.

NEW COUNTRY

From where we stand this looks like a new country, new in the sense that the pathfinder and the pioneer entered it but yesterday; yet it is probable that within a mile of this spot there were white men of the then greatest and most civilized nation of the world spying out the land nearly 400 years ago—before Shakespeare was born, before Jamestown was settled, or Ponce de Leon landed in Florida.

These Spaniards, captained by Alarcon, sailed up from the Gulf, anchored their ships somewhere below Needles, and went on up the Colorado in boats, probably as far as the rapids of the Grand Canyon, seeking the fabled seven cities of Cibola; baffled, they sailed south

again and for 300 years the land lay empty and barren and unknown.

UNCHANGED COUNTRY

What they saw, we see, now unchanged except for these roads, these construction camps, this substation and the transmission lines extending from it. But because of these things, insignificant as they appear when scaled against their background, there depends over this whole country, far as we can see and hundreds of miles farther, a tremendous change in physical aspect that will symbolize an even greater change in the number and the employment and security of the people, not only of southern Nevada, but of the whole southwest.

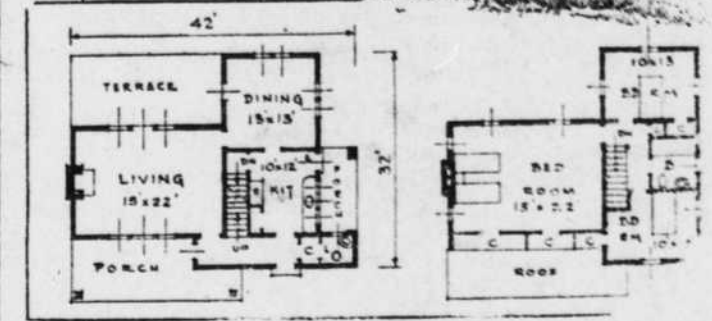
A few hundred yards from here the western end of Hoover dam will become a part of the rock against which this substation is built, its crest, at about this level, carrying a broad highway across the chasm into which we have looked, to the Arizona side and on eastward to the Atlantic. Upstream a great lake will extend for 110 miles; downstream below the enormous concave of the dam, power houses will appear more than one million horsepower of electrical energy, approximately as much power as is now being consumed in all southern California. What this will mean in the development of mineral, agricultural and industrial resources, we can perhaps best guess who have seen what our own lines have made possible of accomplishment in Nevada and in the Mojave and Colorado deserts.

WHAT IT MEANS

What it will mean in the lifting of the flood menace from the lower basin of the Colorado; the insurance of domestic water supply to the densely populated coastal regions; the desilting of the waters of the Colorado; in climatic change through surface evaporation from the great reservoir and the expansion of irrigated areas, only the future will reveal, but it is safe to assert that economically and soci-

HOUSE IN FRANCE INSPIRES COTTAGE OF MODERN STYLE

The French provincial farm house is the inspiration for this modern cottage of charming design. And the appeal is not confined to the eye, for the plan neglects neither comfort nor convenience. The result is a house much larger than an outside view suggests.



A large living room, dining room and kitchen are on the first floor, the large porch on one side of the living room greatly enhancing the summer comfort of the house. On the opposite side is a terrace, upon which the living room and the dining room open. Shading the kitchen window is a small porch.

Each of the three upstairs bedrooms is cross-ventilated, and the master's bedroom is the same size as the living room below. A bath is conveniently located and there is ample closet space.

Exterior walls are of stucco in a suitable color such as light buff or light cream. For something different, one might choose the very

plains. The hand-hewn posts and scrolled beam of the porch strike an exterior note of distinction. Equally striking are the rough batted shutters and flower box and the doorway beneath it.

Exterior wood and trim are a weathered natural French gray and all beams should show adz marks plainly.

The lot should be at least 50 feet wide and 150 feet deep—larger if possible. The living room's chimney end should face the south, but other orientation may be desirable, according to locality.

Local factors such as material prices and labor charges will influence the cost, but estimates are between \$7,000 and \$9,000.

logically, the things achieved will outweigh a hundredfold the wildest dreams and expectations of Coronado and Alarcon, whose ear-ringed explorers battled the current past this spot 400 years ago in quest of treasure cities with roofs of gold and walls of silver.

BUILDING PART OF LIFE

We do not live by bread alone. To have builded, to have achieved, whether the achievement is acclaimed or is buried as an infinitesimal and unnoted detail in the mass of which it is an integral part, that I believe, is at once the justification and the reward; without that incentive, without that faith nothing is done of permanent value to men.

In this substation which represents the completion of a 225 mile line from San Bernardino to Hoover dam site, there is more to me than mere steel and copper and concrete and the accountant's sheets that establish its cost in dollars and cents. It stands for the human element; for the organization that was welded and tempered in loyalty and cooperation through 20 years of struggle with incense things, high altitudes, storm and flood, the empty desert, the burbling danger of impounded water; the reluctance and skepticism of capital. In that hard and exacting school were trained those who have built this line on schedule and ahead of schedule, against difficulties and obstacles that might well have daunted and delayed men of different rearing and background.



We have signed up as a 4 SQUARE DEALER

You have undoubtedly heard or read about 4-Square Lumber—the lumber of guaranteed quality. The lumber comes in packages with the species and grade plainly marked on the label of each package so that the man who buys can see for himself that he gets exactly what he orders and pays for.

In line with our policy of handling only the finest materials and of taking every opportunity of proving to our customers the quality and money's worth of our goods, we welcomed the assurance 4-Square offered.

Our first shipment of 4-Square is on its way. We shall let you know when it arrives.

If you are planning on building a home come in and inspect our plans. They are modern and are adapted to this climate.

ED VON TOBEL LUMBER COMPANY

217 SOUTH FIRST STREET TELEPHONE 47

AIRDOME TO SHOW SOUND PICTURES EXCLUSIVELY NOW

H. C. Brown, owning manager of the Airdome theater, announced last evening a new policy for his open air theater, the discontinuance of the stage revues and running first-run feature talking pictures, two times nightly, starting at 7:45 and running continuously.

He said it had been proved to his satisfaction that action in talking pictures is demanded by the public. There must be action in pictures for young people and folks who see with the eyes of youth.

Believing this he has scheduled "Maybe It's Love," the Warner Bros. and Vitaphone collegiate comedy romance featuring Joan Bennett, James Hall, Joe E. Brown and Laura Lee, which opens at the Airdome theater for a run of three days tonight.

"Of course, action alone cannot carry a picture in popular favor," stated Brown. "There must be a balance of story interest, cast, and love interest."

In his meteoric career as a director, William Wellman, director of the picture, has always been a maker of action stories. Among these are listed "Wings," "Legion of the Condemned," "Beggars of Life," "Dangerous Paradise," "The Man I Love," "Young Ebbles," "Ladies of the Mob" and others.

The cast of the campus comedy-drama also includes Anders Randall, Sumner Getchel, George Irving, George Bickel and others.

Joseph Jackson did the screen play. For next Wednesday and Thursday this play house will offer as a talking feature George Sidney and Charles Murray in "The Cohens and Kellys in Africa."

WHITTIER MAN HAS L. V. LEASE

W. E. Morris of Whittier, Cal., has leased from Ed. Clark the northeast corner of Sixth and Carson street with seventy-five feet on Fifth street and one hundred forty feet on Carson. The lease was written for a period of ten years for \$27,000.

M. H. Davis of the Youngquist Realty company negotiated the sale. Building on the property will start within a week or ten days.

Mr. and Mrs. W. E. Morris, who have been in Las Vegas for the past two days, are greatly impressed with the city and its opportunities.

R. A. SPOONER COMPANY

General Construction
Our Specialty

Mill Work
Cement
Plaster
Tile Setting

Any and All Jobs of Construction

PHONE 464
Eighth and Stewart

RAIL Splinters

BY JOHN H. LIGHTFOOT

There is always the first time. The Boulder U. P. Branch expelled its first necessity for calling out the wrecker. A car got from under control and wound up by leaving the track and taking a dive into the sand. Engine 6053, Engineer Doyle at the throttle, piloted the wrecking crew to the point of interest.

Warren Farrell of the U. P. construction gang at this point leaves for Ogden the fore part of the week to fight Alvin Lewis, a colored boxer from Pocatello.

Lester Bash, machinist apprentice, left Saturday for Caliente to finish his apprenticeship. The change was made in a transfer. Bash has about two months to serve.

Engineer Jones is listed on the lay-off board for a short rest. Engineer Jones is one of the old timers at this point.

Geo. Bullis (Bullets) piloted a bunch to Vegas Wash Saturday afternoon on a fishing trip. Bullis says it is a great trip and that the fish will be awaiting them. They return today about noon. The boys anticipated quite a good time and oh, a lot of fish.

Fireman Norton is getting in the service and is taking a few days lay off. The rests are well needed.

Train Number 22 passed through Las Vegas Saturday morning in two sections. Who says business is not picking up "Travel and Ship by Rail," is now the slogan.

President Carl Gray and party of the U. P. will visit Las Vegas right after the first of July, on a trip of inspection.

E. F. Lackey of Yermo is spending Sunday in Las Vegas. He says it is pretty lonesome at Yermo. Oh, yes, Mrs. Lackey is still in this city.

TO START ON L. V. GAS PLANT

H. C. Keyes, proprietor of the Las Vegas Gas company, Ltd., states that materials have been ordered and construction of the new plant and distribution system for this city, will commence within the next eight days.

The plant, costing about \$200,000, will give employment to fifteen men for eighty days, Mr. Keyes said.

COLUMBIA MAN TO HEAD N. E. A.

LOS ANGELES, June 27 (AP)—Dr. William C. Bagley, of Columbia Teachers college, today was elected president of the National Council of Education, which ended its convention here with a heated debate on a change in membership rules.

The discussion was on the question of whether persons not members of the National Education association should be eligible to the N. C. E. No decision was made, however, since it is the custom of the council to propose changes in rules at one meeting and act upon them a year later.

"MA" TO WED

PORTLAND, Ore., June 27 (AP)—Mrs. Minnie A. "Ma" Kennedy, mother of Alcee Semple McPherson, announced here tonight that she will be married in Longview, Wash., tomorrow to Rev. J. E. Hudson, evangelist, of New York.

You Can Get BETTER MEALS AT THE OASIS BIHLMAIER'S Women Cooks

We Believe In LAS VEGAS

The future of Las Vegas is guaranteed! Your gilt-edged security is the tremendous government project—Boulder Dam. Las Vegas holds the unique position of offering the quick profits of a boom—without the instability of a boom.

Let W. J. "Shorty" McDonald give you complete information on interesting investments. "Shorty" has been a familiar figure in Southern Nevada for thirty years and has the confidence and respect of all who have dealt with him.

LOOK

- 8-Room House, 2 3-Room Bungalows, 1 Room House, 50 x 140, Income \$125.00 monthly.
 - Lot 75 x 140 on Fifth Street.
 - Lot 50 x 140, New Duplex, 4 bedrooms Hoover Street.
 - Several fine business lots on Boulder Dam highway Lots 75 x 150, 7 Houses on lot, Income \$160.00 monthly.
 - A Beautiful corner, 100x140 at Sixth and Carson. Investigate!!
 - 40 Acre Ranch near The Meadows. 2 Beautiful Apartment houses, Income \$375.00 a month.
 - Lot 50x140 on Fifth Street
 - Fine Residential Lots on Main and First Streets, With City Water and Light
- For information regarding mining properties in El Dorado Canyon, Johnnie District, and Searchlight—"See The Man Who Knows."

W. J. "SHORTY" McDONALD

REAL ESTATE AND MINES
117 CARSON STREET

SOMETHING DIFFERENT

Some people do not like crowded conditions. They prefer room for vegetables or fruit and chickens.

For Example

90 x 150 PLOT IN THE CITY, WITH AMPLE WATER

And Prices and Terms Are SO VERY REASONABLE

FOR PARTICULARS REGARDING THIS AND OTHER UNUSUAL VALUES, SEE—

E. W. ALLEN

REALTY BROKER
11 FREMONT STREET PHONE 238

\$22,000 Cash For Limited Time

Miller's Improved 440 Acre Alfalfa Ranch

Just outside of LAS VEGAS IS MILLER'S RANCH. The U. P. R. R. to BOULDER DAM runs across one corner. Level sandy loam, ditched, checked, watered and fenced hog tight. Nine artesian wells flowing into three large reservoirs. Ideal for DAIRYING; MONEY may be made supplying LAS VEGAS and the DAM DISTRICT. OR SUBDIVIDERS may sell in small tracts for poultry ranches. WORKERS on BOULDER DAM should need and buy these desirable farms, and same may be sold LOCALLY to BUSINESS MEN and others seeking SUBURBAN ESTATES.

Shown to responsible parties by OWNER

JOHN F. MILLER
LAS VEGAS, NEVADA

INEXPENSIVE BUILDING

Gypsum and Adobe Blocks

best adapted to desert construction are now furnished by us at \$80 per thousand laid in the wall. They make cheap but lasting buildings and are tempered for this climate. Eighty dollars just supplied all the thick heavy walls for building 20x16 feet. Before you build investigate our proposition.

LAS VEGAS BRICK AND PLASTER COMPANY
The Cal Ray Professional Building and the Waters Apartment Building are constructed with these Bricks.

C. Lilya, Owner

ELEVENTH AND STEWART STREETS