

YOUR BRAIN and YOUR HEALTH

By DR. LELAND B. ALFORD
THE OLD MIND

There is a prevalent dread of increasing age with its supposed failure of powers, physical and mental. It is common knowledge that athletes are generally very young persons and that increasing years quickly bring an appreciable decrease in energy and endurance. The mental situation is more complicated than the physical. While the older person may lose in some respects, it is felt he may more than offset the loss by gains elsewhere as in knowledge, experience, calmness and courage.

The general opinion seems to be that learning ability, like physical capacity, begins to fail comparatively early in life. We are always hearing of the faculty of trying to teach old dogs new tricks.

Thorndike recently conducted tests indicating that the failure in learning ability with increasing age is much less than had been supposed. It seems that up to thirty there is no decrease at all, and that after thirty the falling-off is comparatively slow.

At 45 years of age the capacity to learn was found to be only about 15 per cent less than at the peak of the learning curve. At 45, therefore, one is quite justified in aspiring to master, for instance, a foreign language, literature, art, or almost any subject.

In the continuation schools of England it was found that many who began the cultivation of the art of writing in middle life were able to equal those trained at Oxford and Cambridge.

The tradition that learning must be limited to young dogs is therefore only a notion. On the contrary, it is probably true that we should profit by continuing education all our lives.

We are prone to drift into intellectual laziness. It is much easier to glorify what we already know than to struggle with new facts. To continue to learn should keep us out of ruts.

CHICAGO'S NEW MAYOR IN OFFICE TODAY WILL SWEEP CITY HALL CLEAN

Twelve Thousand Appointments to Be Directed by Cermak—Czechoslovakia Pleased by Election

CHICAGO, April 8. (AP)—Speedy reorganization of Chicago's municipal government is promised by Democratic Mayor-elect Anton J. Cermak, immigrant, Bohemian and former mayor, whose election yesterday by nearly two hundred thousand majority ended the twelve-year Republican rule of that master showman of politics, William E. (Big Bill) Thompson.

Cermak, who expects to be inducted into office Thursday, will have the direction of 12,000 appointments. He said he would lose no time cleaning out the city hall.

A dispatch from Czechoslovakia, his native home, said newspapers there have made a big to-do over his election.

JUNIOR PROM FRIDAY NITE AT THE GYM

The junior prom. to be held tomorrow night at the high school gymnasium, will afford the public the best kind of a dance in every way.

Deb Orton's orchestra has been engaged for that night, thus assuring the dancers plenty of good music. Extensive decorations are being provided by the members of the junior class in preparation for the event.

New System For Zeppelins

WASHINGTON, April 8. (AP)—Further developments in the difficult art of handling the huge and cumbersome lighter-than-air craft of the Los Angeles, or Graf Zeppelin type, are now being perfected, according to reports made public by the navy department.

Latest mechanical invention to reach a practicable stage is a mobile mooring mast, running on tracks, and cutting down the number of the ground crew needed from 200 to 60.

Last year the navy put into use a stub mast, hauled by a tractor, which was successfully used in handling both the Los Angeles and the Graf Zeppelin. This latest invention operates on much the same principles, but substitutes a mast running on railroad tracks.

Parallel tests are now being made to determine whether the old "crawler" mast, or the newer "rail-mast," is the most practical. Navy officers hope to reach a decision on standard equipment before long.

Both types of mast, under consideration, navy aeronautical officials said, can be adjusted to handle the giant dirigible Akron now building, which is larger than any other lighter-than-aircraft ever handled.

Modernized China Pushes New Air Lines; 96 Hour Route To Europe Is Latest Plan

NANKING, April 8. (AP)—China's dash toward modernism is taking to the air these spring days. A link with Europe which will cut the overland journey between Cutchay and the Old World to 96 hours is the latest development. The trip now consumes two weeks by train.

Then there are air routes connecting the centers of China itself. A total of 15 such lines are on the program of the ministry of communications.

That these schemes are not merely paper fantasies, calculated to impress the world with China's conversion to modernism, is attested by the fact that the important Shanghai-Hankow line has been operating more than a year.

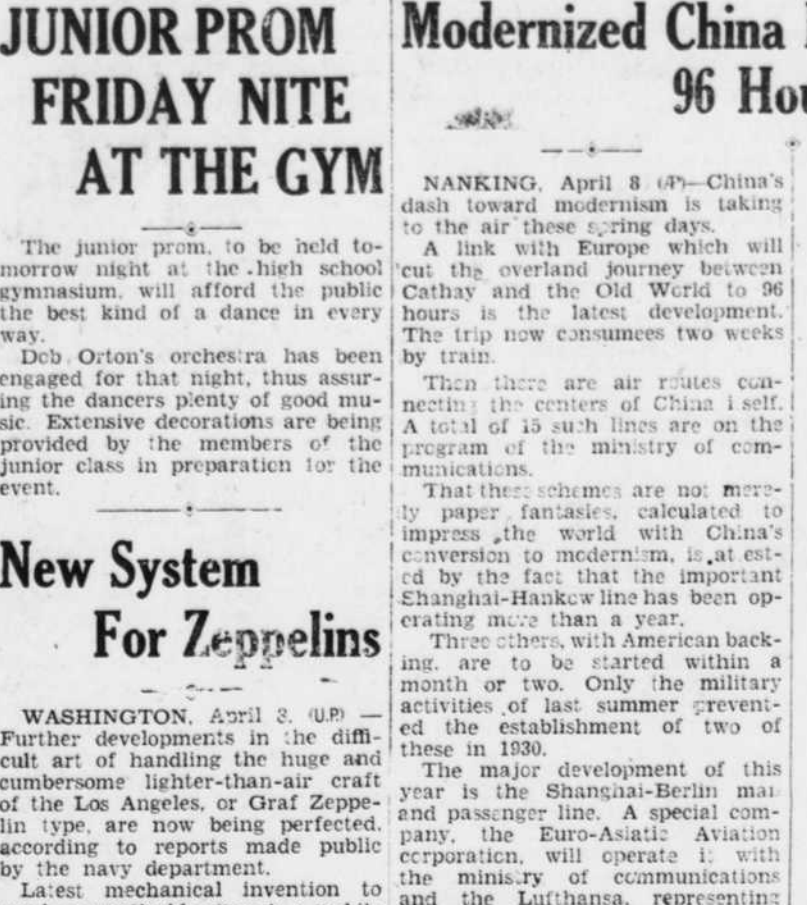
Three others, with American backing, are to be started within a month or two. Only the military activities of last summer prevented the establishment of two of these in 1930.

The major development of this year is the Shanghai-Berlin mail and passenger line. A special company, the Euro-Asiatic Aviation corporation, will operate it with the ministry of communications and the Lufthansa, representing the Chinese and German interests respectively.

Five German planes, manned by 32 German pilots and mechanic, have surveyed the route from Shanghai to the Siberian border. Landing fields have been laid out and offices of the company opened in Shanghai and this city.

The corporation recently was given a monopoly on all airmail from Peiping to Europe. Mail will be carried to the old capital from South China by the China National Aviation corporation, a concern with joint Chinese and American backing.

The German planes will fly to the Siberian border, the last stop being made at Manchuria in Manchuria. A working agreement has been made with the soviet union to transport the mail and passengers across Siberia and European Russia to the German border.



An American biplane of a type in wide use in China is shown ready for a hop from Shanghai Canton. To the left is Chang Wei-Chang, head of the aviation section of China's government. The days of the slowly plodding camel trains (right) are numbered.

where they will be transferred a second time to German planes.

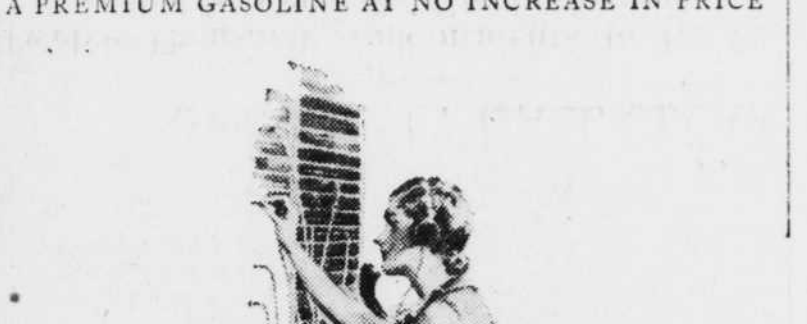
PROHIBITION IS AN ISSUE IN FINLAND

HELSINGFORS, Finland, April 8. (AP)—Prohibition leaders of Finland today accepted the challenge made in a petition signed by 100,000 women of the country asking repeal of the Finnish prohibition law and planned to organize meetings throughout the country in efforts to have many of the signers withdraw their names.

The petition, which was signed by scores of women prominent in civic and professional life, is being prepared for presentation to the president of the republic.

The women express anxiety over the fate of future generations because of what they allege to be the continuous spread of drunkenness in Finland under the present dry law.

HOME WINS CHARM THROUGH HARMONY WITH ITS SETTING



The ultimate harmony in the design of a house appears when its relationship to the setting is properly considered.

In this house a happy effect results in the blending of its materials, form and design with the landscape.

The warm reds and browns of the brick used in the walls and chimney, perhaps with a few purples intermingled, are in pleasing harmony with the foliage and are set off nicely by the stucco above, a light cream, gray or white in color.

The woodwork is of a warm French gray, produced by painting the wood thoroughly with a cream tone and then rubbing it off when almost dry, or by using a wire brush after it is dry.

The living room is large, well lighted and ventilated. On either side of the fireplace, its dominant feature, is a window seat in an attractive bay.

Just off the living room is the dining room, made cheerful by the large window area and the porch upon which it and the living room open and overlook the garden.

The kitchen is convenient to the stairs and the front porch, near which here is a lavatory.

All rooms have corner locations, and of the three upstairs bedrooms, two have three sides exposed, allowing a window on each side. The bathroom for the three is centrally located.

The side of the house opposite that pictured is equally attractive, and pleasing arrangements on a lot 50 by 100 feet, or preferably larger, will suggest themselves.

Noises from today's busy streets would not so easily disturb this home due to the location of the living and dining rooms.

The cost of construction with brick veneer on frame walls and stucco on metal lath, should range from \$8,000 to \$10,000, local conditions governing.

"Standard" Gasoline

AT STANDARD STATIONS, INC., AND RED WHITE AND BLUE DEALERS

THE BIGGEST DANCE OF THE YEAR

JUNIOR PROMENADE

HIGH SCHOOL GYM

April 10 \$1 Per Couple Extra Ladies 50c 8:00 P. M.

DOB ORTON AND HIS ORCHESTRA

PUBLIC INVITED COME EARLY



where they will be transferred a second time to German planes.

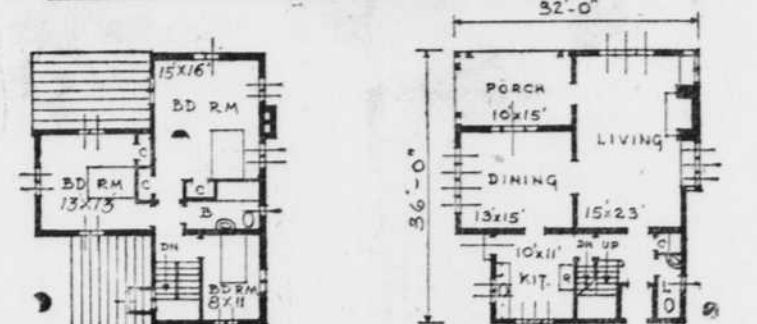
PROHIBITION IS AN ISSUE IN FINLAND

HELSINGFORS, Finland, April 8. (AP)—Prohibition leaders of Finland today accepted the challenge made in a petition signed by 100,000 women of the country asking repeal of the Finnish prohibition law and planned to organize meetings throughout the country in efforts to have many of the signers withdraw their names.

The petition, which was signed by scores of women prominent in civic and professional life, is being prepared for presentation to the president of the republic.

The women express anxiety over the fate of future generations because of what they allege to be the continuous spread of drunkenness in Finland under the present dry law.

HOME WINS CHARM THROUGH HARMONY WITH ITS SETTING



The ultimate harmony in the design of a house appears when its relationship to the setting is properly considered.

In this house a happy effect results in the blending of its materials, form and design with the landscape.

The warm reds and browns of the brick used in the walls and chimney, perhaps with a few purples intermingled, are in pleasing harmony with the foliage and are set off nicely by the stucco above, a light cream, gray or white in color.

The woodwork is of a warm French gray, produced by painting the wood thoroughly with a cream tone and then rubbing it off when almost dry, or by using a wire brush after it is dry.

The living room is large, well lighted and ventilated. On either side of the fireplace, its dominant feature, is a window seat in an attractive bay.

Just off the living room is the dining room, made cheerful by the large window area and the porch upon which it and the living room open and overlook the garden.

The kitchen is convenient to the stairs and the front porch, near which here is a lavatory.

All rooms have corner locations, and of the three upstairs bedrooms, two have three sides exposed, allowing a window on each side. The bathroom for the three is centrally located.

The side of the house opposite that pictured is equally attractive, and pleasing arrangements on a lot 50 by 100 feet, or preferably larger, will suggest themselves.

Noises from today's busy streets would not so easily disturb this home due to the location of the living and dining rooms.

The cost of construction with brick veneer on frame walls and stucco on metal lath, should range from \$8,000 to \$10,000, local conditions governing.

"Standard" Gasoline

AT STANDARD STATIONS, INC., AND RED WHITE AND BLUE DEALERS

THE BIGGEST DANCE OF THE YEAR

JUNIOR PROMENADE

HIGH SCHOOL GYM

April 10 \$1 Per Couple Extra Ladies 50c 8:00 P. M.

DOB ORTON AND HIS ORCHESTRA

PUBLIC INVITED COME EARLY

VAST SUMS APPROPRIATED FOR FEDERAL PROJECTS IN THE STATE OF NEVADA

More Than \$32,000,000 Now Available For Buildings, Highways and Hoover Dam, Including \$320,000 For Las Vegas Federal Building

WASHINGTON, April 8. (AP)—Federal funds available for buildings, highways and other federal construction projects in Nevada total at least \$32,412,777, according to reports received today by Col. Arthur Woods, chairman of the president's emergency committee for employment, from various construction divisions of the federal government.

Funds to be expended by the treasury department for postoffice buildings in Nevada include the following: Elko, \$149,000. Held: Goldfield, \$75,000.

The additional federal public building program reported to congress February 27 included \$95,000 for a postoffice at Elko.

Federal funds for use on Nevada highways total \$2,777,562, including both emergency and regular federal aid funds. Of this amount, \$11,720 is under construction, \$430,300 has been approved for construction, and \$1,685,542 is available for new construction.

The offices of Indian affairs has funds amounting to \$10,000 for the construction of an employees' building at Carson City, and \$20,000 for a home economic building at the Carson school.

For the Boulder Canyon project congress has appropriated \$10,600,000 for the fiscal year 1931, and \$15,000,000 for the fiscal year 1932. Contracts have already been awarded for the Boulder City-Hoover dam highway, \$328,917; the Boulder City-Hoover dam railway, \$455,510, and for storage and regulator tanks, \$4,235. These contract prices include merely labor and supplies, all materials being furnished by the federal government. In addition to this work, the Southern Sierras Power company is now constructing 235 miles of transmission lines, to be completed by June 1, to cost slightly more than \$1,000,000.

Contract for the construction of the Hoover dam has been let, the estimated cost of labor and materials being \$80,000,000, and the time allowed for completion seven years. The contract price is \$48,800,000. In connection with Boulder City, municipal improvement work has been started which will cost approximately \$2,000,000.

At the naval ammunition depot, Hawthorne, projects now on shortly to be in active construction total \$25,000. This includes a mine filling plant, \$334,000, irrigation system, \$34,000, landscaping, \$20,000, and miscellaneous items of improvement and extensions of facilities, \$75,000.

Before the first of June work will be started totalling \$25,000, including construction of the dam at Oak Creek canyon, at a cost of \$165,000, surfacing roads of 100 feet, \$12,000, and other miscellaneous items totalling \$20,000.

Smart Lingerie Matches Costume

PARIS. (AP)—Lingerie which matches the costume color scheme is a new idea of smart Parisians. Seafoam green lingerie is worn with dark green suits or frocks, pale pinky beige with dark blue, and light blue with black ensembles.

You'll like this smart new PONTIAC particularly at its new low price

DELIVERED \$870 EQUIPPED

Check Pontiac's fine-car features against your own experience as a motorist, and you can quickly decide the question of value . . .

BODIES BY FISHER—In these bodies Fisher craftsmen have attained remarkable insulation against heat, cold and noise. Style, riding ease and safety also reach new standards. Upholstery of genuine whipcord or mohair combines good taste with exceptional durability. There is ample roominess.

NEW 60-H. P. ENGINE—Power alone never meant satisfactory performance. Through advanced engineering Pontiac has attained fine-car smoothness along with power ample for all driving needs and emergencies.

CHASSIS CUSHIONED WITH RUBBER—At more than 40 points, including spring shackles, the chassis is cushioned with rubber. Riding ease is notably increased—also the car's steadiness on the road. Protection from the effect of road shocks prolongs the car's life.

LARGE, POWERFUL BRAKES—In any emergency—in town or on the highway—the driver has full control of his car. Surely, evenly and powerfully, the big brakes grip all wheels. You are safe in all driving conditions.

A demonstration will be arranged at your convenience—entirely free of obligation, of course.

* This is the price of the 2-door Sedan or Coupe delivered to you in Las Vegas, Nevada, and equipped ready to use.

Equipment includes front and rear bumpers, shock absorbers, 5 wire wheels, and extra tire, tube and tire lock. Other models priced as follows: Sport Coupe \$910, 4-door Sedan or Convertible Coupe \$940, Custom Sedan \$980.

A GENERAL MOTORS VALUE

JAMES CASHMAN
107 NORTH MAIN STREET
Las Vegas, Nevada

ATTENTION

RESIDENTS OF LAS VEGAS
HAVE YOU A ROOM AVAILABLE FOR
TRANSIENT RENTORS?

A Room-Listing Service, Working in Co-operation with the—
Gateway, Lincoln, McDonald, National, Nevada, Overland, Meadows and
Union Hotels—Is Now Established and at Your Service.

List Your Rooms At Once—No Charge

Room Listing Service

125 SOUTH THIRD STREET PHONE 459

For Warm Weather Comfort See—

The New Ventilated Oxford at \$2.25

The Toggery
8 FREMONT STREET

Phone—
Johnny-on-the-Spot for Ice
34

WE PUT THE ICE IN SERVICE

ICE plays a mighty small part in your cost of living. You should not risk your health or the waste of food these days by trying to do without a sufficient supply of ice. Let us supply you with the necessary amount to give you the proper refrigeration.

Las Vegas Coal & Ice Co.
IRA J. EARL, Proprietor
412 S. MAIN STREET

Mrs. Francisco Rozzini is ill at the Las Vegas hospital.

Mrs. M. M. Jones is employed in the county assessor's office during the rush season.

Mrs. W. R. Bracken returned yesterday morning from San Francisco where she has been visiting for several weeks.

You Can Rent a Car and DRIVE IT YOURSELF

U DRIVE IT CO.
FORD GARAGE
118 South Fourth Street