

CASHMAN DISPLAYS NEW MARQUETTE TODAY

MARQUETTE, BY BUICK DISPLAYED HERE TODAY

Medium Priced Car is Added to Buick Line. James Cashman, Local Dealer, Will Display New Marquette in Several Styles Today.

New Marquette Is Car of Refinement

Buick dealers throughout the country today are displaying the Marquette, a new six, produced and distributed by the Buick Motor Company. This car is the ninth in the General Motors line, and which will sell in the medium price field. It is offered in six models, a two door sedan four door sedan, business coupe, sport coupe, a roadster and a touring car.

The Marquette is an exceptionally large car for its price class having a wheel base of 114 inches. Prices on the car range from \$965 to \$1035. The six-cylinder I-head motor and the crank case are cast in one integral unit. The engine has a bore and stroke of 3 1/8 by 4 5/8 inches and develops 67.5 maximum brake horsepower. Buick officials say the Marquette has remarkably quick acceleration and a maximum speed of up in the seventies.

All models are Fisher designed along the low swing rakish lines. The bodies are built by Fisher and finished in Duco color combinations that follow the present fashion trends. The radiator which is covered with a metal grille is deep with a narrow chromium plated rim that balances with the chromium plated hub caps. The wheels are sturdy and carry large section 28x5.25 balloon tires.

The Marquette has a non-glare Fisher VV type windshield which sets at an angle of seven degrees from the perpendicular and reflects all glare, whether from rear, front or sides, below the driver's line of vision.

Other features embodied in the Marquette include large internal expanding Duo-Servo four wheel brakes, an adjustable steering wheel and adjustable driver's seat, built-in bumper mountings and all chromium plated outside hardware. The soft, but durable upholstery is water proof, impregnated under a new process with a rubber solution.

A full pressure lubricating system is used on the new car insuring a constant flow of oil to main bearings connecting rod bearings, cylinder walls, camshaft bearings and the timing chain. The water cooling system is thermostatically controlled and has ample capacity to keep the engine at normal temperature under all driving conditions.

The tapered chassis is exceptionally sturdy and, together with long semi-elliptic springs, gives the Marquette new qualities of restful, smooth riding at all road speeds.

Sounding a new note of smartness in medium priced car design, the lines of the Marquette a new six built and introduced to the motoring public, emphasize the new degree of speed and performance which the Marquette brings to the price field it is entering.

From the distinctively modern styled radiator to the specially designed and complete rear end, the lines of the new Marquette possess a symmetry of contour which bespeaks the fleetness of the car and a degree of refinement found in most expensive cars.

The engineering staffs of both Buick and the Fisher Body Company exercised the same care and study in designing the new Marquette that has made them, over a period of years, outstanding leaders in their art.

The Marquette's lines are low, long and graceful. These lines are accentuated in the sleek design of the radiator and hood, and the moulding which begins at the radiator and goes completely around the body. Large wide doors, and inset window openings offer an appearance of richness and luxury comparable to higher priced cars. The windows themselves are very wide providing excellent vision from both front and rear compartments.

The Marquette introduces to the motoring public for the first time a scientifically sloped windshield on closed models. The new windshield eliminates all glare either from approaching lights or from lights to the rear or sides of the car.

The fenders are of the one-piece, full crown type, perfectly blended into the general contour of the lines. Also designed with attention to contour are the lamp and tire carrier. All exterior metal parts are chromium plated including head, cowl and tail lamp rims, radiator shell, cowl band and hub caps. The louvers in the Marquette hood are well spaced.

A unity of appearance in maintained in the wheels, which have ten spokes of special design. The tire rim has been blackened. All four sides of the running board are bound.

The rear deck on the Marquette Coupe has been brought back and way down. The frame has been sloped to harmonize with the body lines.

The interiors of the Marquette closed models present an appearance of luxuriousness seldom found in cars of that price range.

The upholstery, in addition to being decidedly attractive, is most serviceable. It is a new type of mohair plush designed by the Fisher Body Corporation especially for use in automobiles. The material is extremely durable, the pile being fast set in rubber. The interior fittings of the new Marquette closed cars include upholstered arm rests, especially designed hardware ash trays on the two sedan models, scuff plates at the doors, dome light, robe rail, nickel plated foot rest, rubber mat in front compartment and high grade carpet in the rear. Federal openings are completely enclosed. Rear curtains on the Two-door sedan and rear and side curtains on the Four-door sedans are standard equipment.

Especially notable in the Marquette are the wide, comfortable seats. An adjustment on the side of the driver's seat, easily operated moves the seat backward or forward over a three inch range. This feature combined with an adjustment on the steering wheel, makes both adjustable to all drivers. The rear seats are extremely comfortable, being 47 1/2 inches wide.

CUSTARD PIE THROWING NO GROUNDS FOR DIVORCE

HARTFORD, Conn., May 31 (U.P.)—Custard pie throwing may be good slapstick comedy but it isn't grounds for divorce, Superior Court Judge Edward M. Yeomans has ruled.

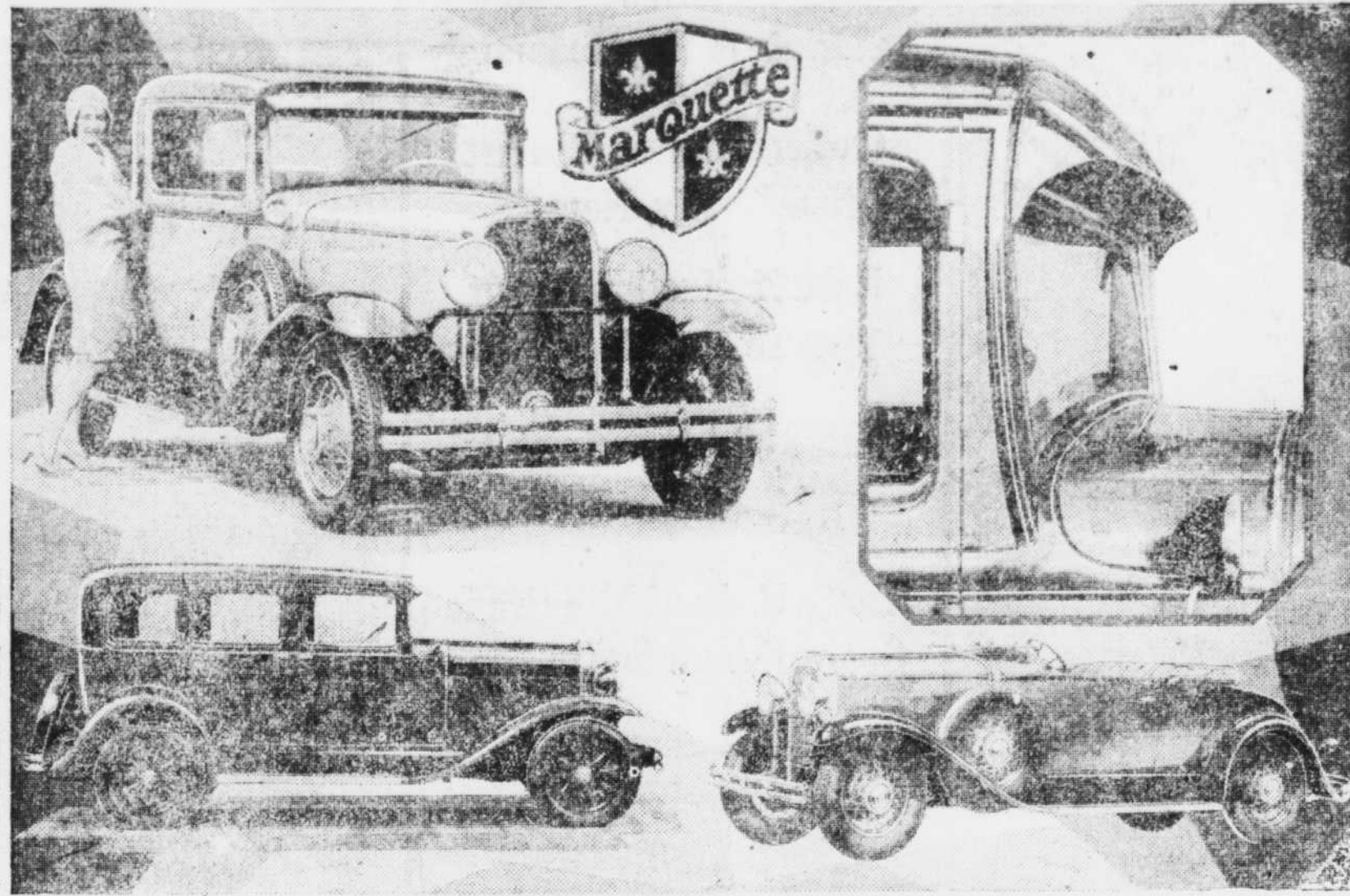
In his unsuccessful attempt to gain a divorce, William Fitzpatrick testified his wife threw a custard pie at his face. Mrs. Fitzpatrick admitted it—with some pride—but denied throwing dishes, hot water and a poker.

Mrs. Berry Announces the opening of her

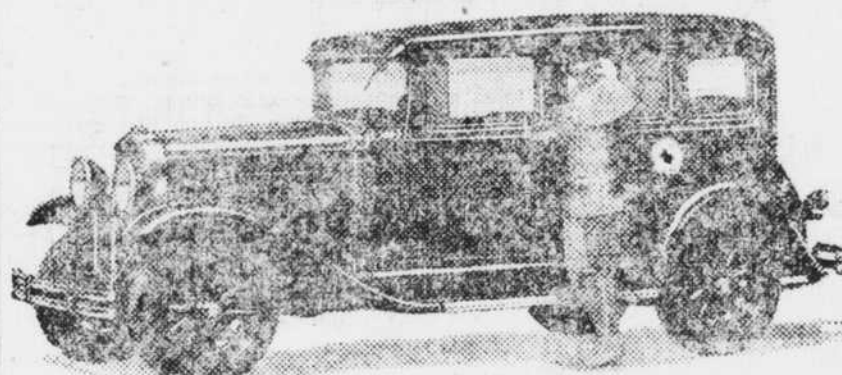
Home Cooking Dining Room

Change of Menu Every Day
Everything Is Home Cooked

MRS. BERRY
402 Ogden St. Las Vegas



Marquette Offered by Buick in Medium-Price Field



The Four Door Sedan is one of the six models comprising the new Marquette line just introduced by the Buick Motor Company

Buick dealers throughout the country today are displaying the Marquette, a new six, produced and distributed by the Buick Motor Company. This car which will sell in the medium-price field, is offered in six models—a two-door sedan—a four-door sedan—a business coupe—a sport coupe—a roadster and a touring car.

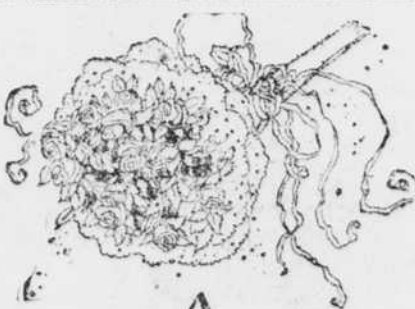
The Marquette is an exceptionally large car for its price class having a wheelbase of 114 inches. Prices on the car range from \$965 to \$1035. The six-cylinder I-head motor and the crankcase are cast in one integral unit. The engine has a bore and stroke of 3 1/8 by 4 5/8 inches and develops 67.5 maximum brake horsepower. Buick officials say the Marquette has remarkably quick acceleration and a maximum speed up in the seventies.

All models are designed along low swing rakish lines. The bodies are built by Fisher and finished in Duco color combinations that follow distinctive fashion trends. The radiator which is covered with a metal grille is deep with a narrow chromium plated rim that balances with the chromium plated hub caps. The wheels are sturdy and carry large section 28x5.25 balloon tires.

The tapered chassis is exceptionally sturdy and, together with the long semi-elliptic springs, gives the Marquette new qualities of restful, smooth riding at all road speeds.

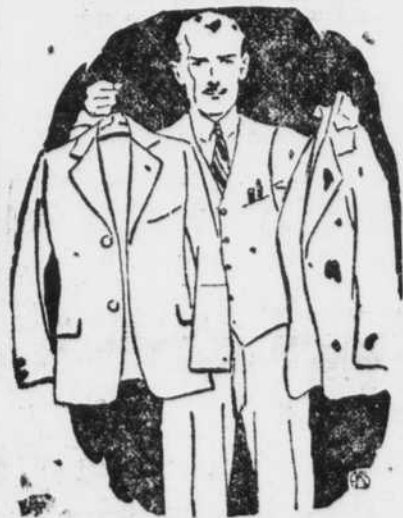
REINDEER CALF IN U. S.

BEVERLY, Mass., May 31 (U.P.)—What is believed to be the first reindeer calf ever born in the United States is doing nicely at Lodgepole ranch, Mrs. Emerson Durham's North Beverly estate. The young reindeer is jet black and quite long-legged.



As Necessary as the BOUQUET

Well, rather—for without the invitations there would scarcely be need for a wedding bouquet. And both must be so lovely, beautiful and ultra-modern. For the invitations this means that they should be nicely printed upon the faultless texture of the Linweave Wedding Papers. As your printer we can show you samples and advise you upon the correct type.



HAVE YOUR CLOTHES CLEANED

By having us clean them, we remove all signs of wear and restore color to its original brightness.

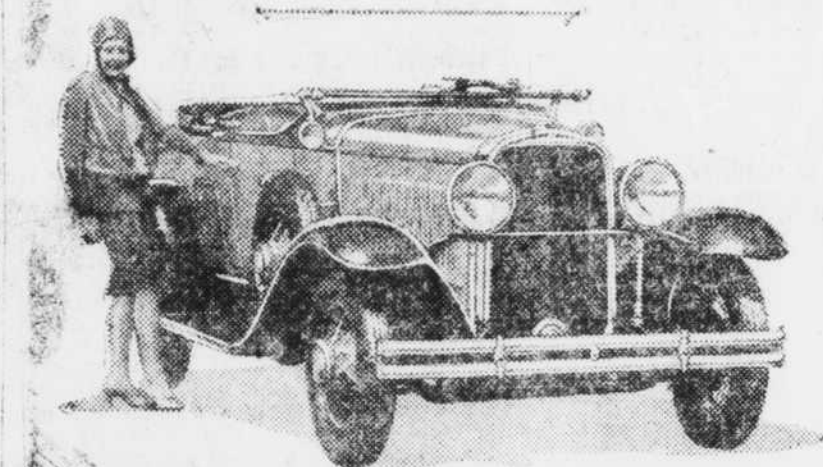
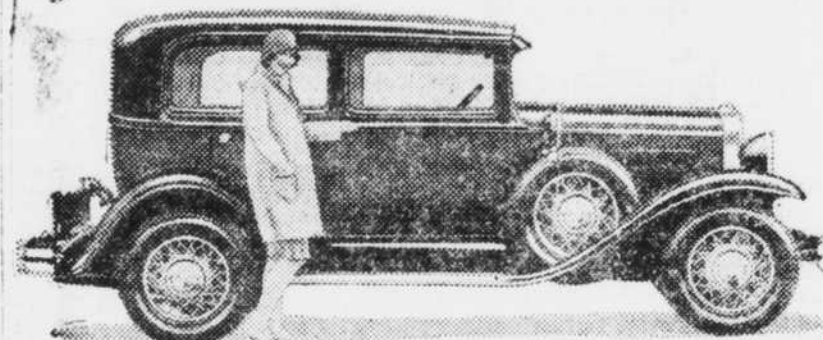
Phone 33 For Driver
VEGAS CLEANING WORKS
14 Fremont St.

Linweave WEDDING PAPERS

Licensed & Bonded
REAL ESTATE BROKER

'Leasing Specialist'
207 So. 3rd St.
Las Vegas, Nevada

Buick Presents Marquette



Two of the six models comprising the new Marquette line. Above—The Two-Door Sedan, Below—The Roadster.

Plea For Peace Is Sounded On Memorial Day

Ministers Take Prominent Part in Ceremony; Flowers Dropped Airplane to Honor Dead.

A stirring plea for peace, and for the consummation of means of settling disputes without the necessity of the terrible bloodshed which has been caused in the past, constituted the keynote of the memorial day address delivered by the Rev. C. S. Reynolds of the M. E. Church Thursday at the cemetery, in a most impressive ceremony honoring the memory of those who have died in times past for their country and their ideals.

"We should bow in memory of those who gave their lives for us, but we should pause today to remember especially the principles for which they died.

"The best way for us to keep faith with those who have died is battle is to use our every influence toward the establishment on earth of the peace and harmony for which they gave their all."

Plea for Injured
The Rev. Reynolds made a plea, also, that we keep our faith with those who are still living but who were crippled and injured in the great war and who are now being hampered and in the hospitals of the nation.

Bishop Bunker of the L. D. S. church spoke of the American Legion and told of the chief aims of the Legion, in perpetuating the ideals for which the Legionnaires fought. The most effective way to pay tribute to those who have given their lives for us is by carrying on those ideals for which they died, he said. A program of education has been adopted by the organization, and is readopted by it each year, he stated, for the inculcation of those ideals in the growing minds of America's youth.

Decorate Grave
Sergeant-at-arms J. D. Smith decorated the grave of the unknown Soldier, and flowers were dropped from an airplane as a fitting climax to the ceremony.

The parade, leading to the cemetery, was held by the Elks, Eagles, Cof. Fellows, Masons, Knights of Pythias, Rotarians and 29-30 Club, forming at the Legion hall and headed by the American Legion boys' band, a new organization under the leadership of Matt Kelly. Matt Kelly's bugle corps sounded taps at the close of the ceremony.

The Rev. Moreno of the Westside Mission gave some appropriate verses from the Bible, praising the values of christianity.

K. O. Knudson chaplain of the army.

Net Tightening On 'Torso' Suspect

LOS ANGELES, May 29 (U.P.)—Homicide squad officers today questioned Frank T. Westlake, retired surgeon and Ben King, taxi driver, about their relationship with Mrs. Laura Sutton, divorcee, who disappeared shortly before a limbless, headless body was found floating in the Los Angeles river.

Subsequent discovery of the skull enabled authorities to partly identify the body as Mrs. Sutton's.

Both Dr. Westlake and King told Bill Bright, head of the sheriff's homicide bureau that they were fiancés of Mrs. Sutton.

The two men told authorities that when they discovered Mrs. Sutton had deceived them, she threatened to commit suicide.

Neither man is under arrest. The imperfect identification of the "torso murder victim" has slowed up the investigation, Captain Bright declared.

OFFICERS KILLED BY MAN WHO SHOT WIFE

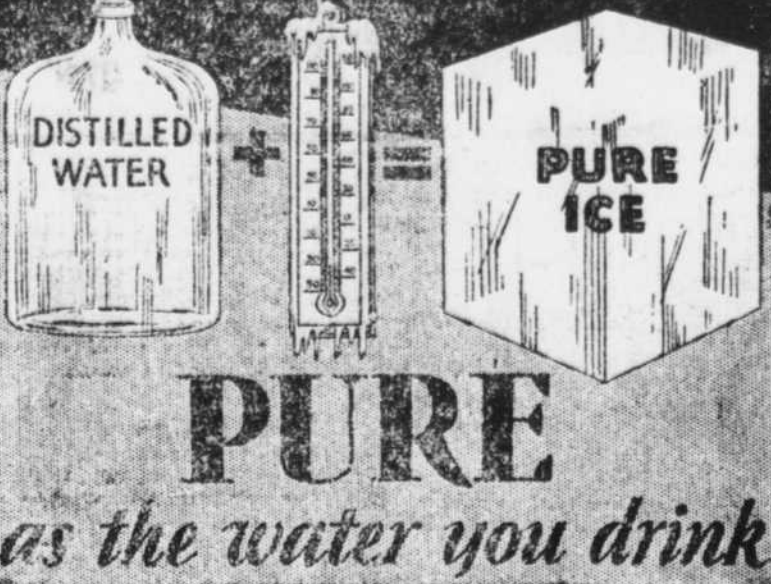
CHICAGO, May 31 (U.P.)—Two policemen were killed in a gun battle on the west side of Chicago today when they attempted to capture George Preuss after he had shot his wife.

Sergeant John Condelley led his squad into the Preuss home and was met by a volley of shots. Condelley was first to be killed. Preuss escaped. He is believed to be insane.

MRS. HOOVER SPEARS

CAMBRIDGE, May 31 (U.P.)—Wearing a cap and gown, Mrs. Herbert Hoover today delivered an address before an audience of 1200 at Sanders Theatre here in connection with the semi-centennial exercises of Radcliffe College.

local American Legion post, which conducted the ceremonies, gave the opening prayer. Post Commander S. J. Shaw gave the introduction at the ceremony.



PURE
as the water you drink

IN our sanitary ice plant, ice is frozen by being subjected to temperatures far below zero. This cold is far below normal winter temperatures to keep the blocks from being mushy, and to give absolutely honest weight in solid ice.

In order to keep milk, fruit, vegetables and meat fresh and wholesome, an iceboxful of pure ice is an absolute essential. If Las Vegas Coal & Ice company delivers it you get the very best!

Las Vegas Coal & Ice Co.
IRA J. EARL, Mgr.
Main & Lewis Streets Phone 34

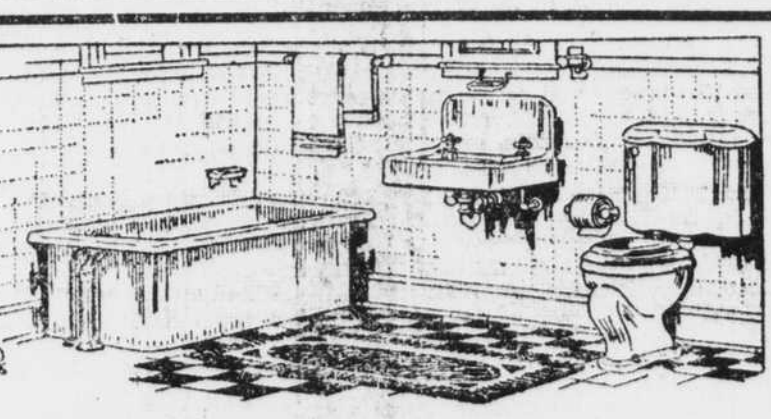


Community Builders

AS THE BUSINESS Houses grow, so grows the Community. Towns like Las Vegas where a close liaison is maintained between Bank and Business, thus insuring the development that wisely invested capital always brings, owe much to these two community builders.

FIRST STATE BANK

"Since 1905"



Plumbing That Stays In Repair

WE guarantee the quality of these attractive fixtures. Expertly installed by our plumbers they should give years and years of satisfactory service without repair. We invite you to inspect our plumbing fixtures.

O. K. Plumbing Co.
Phone 224 205 So. First St.

STORAGE MOVING PACKING SHIPPING
FIREPROOF STORAGE
NORTH OR SOUTH—
OR EAST OR WEST—
WE MOVE WITH CARE,
WE MOVE YOU BEST!

Las Vegas Transfer & Taxi Co.
19 1/2 Fremont Street
Res. Phone 230 Office Phone 210
Las Vegas, Nevada