

**KILLS insects by the roomful**

# Oronite

**FLY SPRAY**

At grocers, druggists, hardware, department stores and Standard Oil Service Stations. Packed in kits (with improved sprayer), pint, quart, gallon, 5-gallon, barrel and 1/2 barrels.

STANDARD OIL COMPANY OF CALIFORNIA

**LOW FARE**

To the

## EAST and SOUTH

From February 1st until March 2nd, 1929—one way tickets to all points in the Eastern and Southern States will be on sale at Union Pacific Stations in Nevada, at greatly reduced fares.

Full information will be given upon application to agents.

THESE FARES ARE FOR

### ONE WAY ONLY

via

## UNION PACIFIC SYSTEM

THE OVERLAND ROUTE

### Chemical Cooler to Replace Water May Aid Super-Plane Development

Liquid cooled aircraft engines of 1,000 or 2,000 horsepower are seen as a possibility for giant airplanes through use of a chemical fluid developed to replace water in the radiator.

With the bulk and weight of airplane radiators minimized through use of the fluid, army air corps engineers say that the most formidable barrier to the super-airplane engine has been removed.

Development of engines, great in power but small in size, has been considered the greatest note of the super-airplane which may carry several hundred passengers. Dr. Claude Dornier, designer of the world's fastest flying boat, has said that regular trans-Atlantic airplane passenger service must wait on engines of the 1,000 or 2,000-horsepower type.

Since the Wright brothers' first flights, the radiator has been a perplexing problem to aircraft designers. Attention of army air corps engineers has been focused on the problem since 1922. The discovery of a satisfactory substitute for water resulted from this research, in which scores of substitutes were tested.

The chemical substitute, ethylene glycol, is the first and simplest member of polyhydric alcohols and is the base for many motor anti-freeze solutions now on the market. It is clear, colorless, odorless, and boils at 347 degrees Fahrenheit.

The radiator can be cut to one fourth its present size and weight by using the chemical cooler, because only a small amount of the fluid is necessary to replace many gallons of water.

Wing radiators, which have been considered advantageous but difficult to develop with the old water-cooled radiator, may come into general use because they make possible an increase in speed by reduction of weight and resistance to the air.

Pursuit planes have increased their speed as much as 15 miles an hour by employment of wing radiators. Air corps engineers found that use of the fluid in a standard pursuit plane without wing radiators brought an 11-mile-an-hour speed increase through a 75 per cent saving in weight and size of the radiator.

### DRILLER GETS TO 140 FEET IN OIL WELL

Rig of Charles R. Henderson Company Works Every Day at Arden; Dr. Hatfield Expresses Confidence.

Having attained a depth of 140 feet yesterday, the oil-drilling operations of the C. R. Henderson company of Los Angeles are going ahead near Arden, with the expectation on the part of the members of the company that oil will be struck eventually.

"We have enough evidence to make us feel sure of striking oil," said Dr. L. M. Hatfield, company member on the ground supervising the work, yesterday in Las Vegas.

A cable tool rig capable of digging either to oil or to granite is being used, and the work is being done under contract by A. C. Derrick and C. G. Carr, drilling contractors.

The drilling operations are being

### 500,000 FEET NEW AND USED PIPE AND CASING from 1/2 to 12 inch

Screw Pipe and Casing, Plain End Pipe and Casing, Valves and Fittings. Used Pipe and Casing have good threads and couplings on each joint. Pipe and Casing cut to specified dimensions. All inquiries promptly answered. All orders promptly shipped.

Wire, Phone or Write

**ADAMS PIPE WORKS**  
2025 Bay Street, Los Angeles, Cal.  
Telephone TUCKER 4361

### MAIL CARRIER SERVICE GROWTH STEPS SOUGHT

Postmaster Asks Permission to Expand Delivery; Dispatching Service to 8:30 P. M. Instead of 6 O'Clock Sought.

Looking to the enlarging of this city's mail delivery service as a condition for permission to add certain parts of Hawkins' Addition, Hawkins' South Addition and Eucly's Addition to the area served by carriers has been sent the Postmaster General, according to Postmaster Robert E. Griffith.

The adding of more help making dispatching of mail up to 8:30 p. m. possible, is another step sought by the postmaster. This step has been made necessary by the fact that, since the dispatching of mail from the securing boxes at 8 p. m., the mail boxes at the depot are used too much, and are fact becoming inadequate for the needs of the city.

The eastbound air mail will be dispatched probably at 9 a. m. and 8:30 p. m. after the increased service starts on May 1, said Griffith. For the westbound mail his end of the line "takes up the slack" for the whole trip across the continent, he stated, and it is hard to tell just when the plane will arrive.

"We always keep in touch with the airport by phone and Thompson gets dispatches by wireless so that he always knows when to expect the westbound planes," he said.

Griffith hopes to add a night mail carrier as soon as this step is warranted. The carrier service was instituted on January 2, 1926, and there are now two carriers. The carriers give service only where sidewalks are provided.

### PRACTICE FOR BAND TUESDAY

The coming municipal band will meet for practice at 7 o'clock Tuesday evening for its first practice, under the leadership of Jim Kelly, it has been announced.

The petition being circulated for the purpose of securing a city appropriation for the band is within about 15 signatures of the required number, and there is no doubt that the 168 signers will be secured, it was stated yesterday.

### WOMAN AND FIVE CHILDREN DEAD

**SOUTH BEND, Indiana, April 19 (AP)—**An aged woman and five children were suffocated as they slept when a defective kitchen stove set fire to the home of Harvey Purrucker.

The grandmother, Mrs. Mary Cooley, aged 73; the boys, all sons of Purrucker, Aloysius, 15; John, 13; Edward, 10 and Louis, 8; and an orphan girl, Katherine Guard, 12, were the victims.

### WOMEN, ICE BOUND, WIN OWN POLLING PLACE

**WALGONAC, Mich., April 20 (AP)—**Because swirling ice in the St. Clair river cut off their homes on Harsens' island from their voting booth on the mainland, members of the women's study club succeeded in having two precincts created where only one had been before. Now there is a polling place on their own little island.

Not content with this they built a community hall and are at work trying to obtain a separate township for the several islands which make up the widely known "St. Clair flats," a year-round residence resort.

In the spring of 1927 when it came time to vote the women found themselves facing a sea of ice. Out of the 187 voters on the island eight essayed the Eliza act, leaping from cake to cake of ice. Not one woman was able to complete the trip.

Next day the study club met. A committee was appointed to confer with the attorney general and the Michigan league of women voters to see what could be done about obtaining a voting precinct for the island. Petitions were circulated, the township board was advised of their desires and eventually two precincts appeared.

Next the women went after the direct primary to take the place of the old time caucus. They obtained it. One of the club members was appointed election inspector with consequent irregularities of the registration books spread before her. The club members now are actively supporting the state league of women voters' legislative plan for permanent registration.

### NEW COSTUME GEMS GAUDIER THAN EVER

By DIANA MERWIN (Associated Press Fashion Editor)

**PARIS, April 20 (AP)—**There will be no let-up in costume jewelry as long as women continue to tumble for the money-making specialties launched by famous style makers.

Necklaces and bracelets, which sell at big prices in the shops that sponsor the new styles, are especially little to produce, are one of the most remunerative profit-makers.

Competition for the exclusiveness of new costume jewelry is keen. Therefore the dressmaking house that can show something original and assure its customers that they cannot find it elsewhere and that no costume can be truly Viennese or Chanel or Lanvin without it has a tremendous turnover on its line of talk as well as its line of merchandise.

The fly in their ointment, however, is the copyist. There are more copyists operating in the costume jewelry field, probably, than in any other. Styles have to be changed rapidly for the famous of their ideas.

Among the latest novelties is a collar of gold, or simulated gold, stamped out of one piece of metal. It has a cut-cut pattern and comes an inch or so below the base of the throat. It fits closely about the neck like a slave collar.

Locking glass chokers are another novelty of spring. Crystal and coral, or imitation coral, beads in combination are new. The same bead necklace is carried out in many colors, with the colored beads concentrated in large knobs half the size of a golf ball.

Algerian and Tunisian jewelry, modern and antique, is being pushed by several fashion houses. African gold work is also being promoted in the form of wide bracelets.

### PLAYED EIGHT POSITIONS IN ONE BASEBALL GAME

**ATLANTA, Ga., April 20 (AP)—**Marcus McWhorter, an official of the Georgia department of agriculture, was a great athlete in his day, and has a record for versatility equalled by few.

In 1906, when University of Georgia played Georgetown university in Washington, McWhorter played at every position on the field except behind the plate.

Injuries and shifts in the line-up gave him the chance to play at eight positions, and he played all of them well. He hit two three-baggers and was responsible for five runs. But Georgia lost, 11 to 10.

### GOING HOME AGAIN

**JOPLIN, Mo., April 20 (AP)—**Horton Smith, young golfer who created a sensation during the winter tournament season, plans to return to Joplin where he is professional at the local club after the British open in which he will compete. He plans also to invest part of his winnings in stock of the club.



ing financed completely by the Jhas. R. Henderson company; in stock and no leases are for sale, stated Doctor Hatfield. The terms of the company are Chas. R. Henderson former Los Angeles banker, Elmer F. Crosby of the Mortgage Appraisal corporation with its headquarters at 439 East Spring street, in Los Angeles, and Doctor Hatfield, who has been in the oil business since 1924. The company is a co-partnership.

The drilling is being done some ten or twelve miles from Arden on the southeast one-fourth of the southwest one-fourth of section 34, township 21 south, range 11 east. The land is known among geologists as the Arden Anticline, and a lease on all the structure has been secured by the Chas. R. Henderson company.

### BOMBS DROPPED NEAR NOGALES

**NOGALES, Sonora, Mex., April 20 (AP)—**Fifteen bombs were shown by federal planes on this city and the town was flooded by pamphlets signed by the former rebel generals, Manzo and Bernal.

All the bombs landed in the outskirts of the city and no damage is reported.

The aviators were apparently aiming at the railroad bridge at the junction of the Nogales-Cuernaueca lines. Two separate raids were made.

Biographies are having a large sale in the larger cities. The small towns get theirs by going down to watch the trains come in.

### OFFICE NECESSITIES

- LEDGERS
- JOURNALS
- DAY BOOKS
- NOTE BOOKS
- LETTER FILES
- LEGAL BLANKS
- TYPING PAPER
- CASH DRAWERS
- GLIP FASTENERS
- WASTE BASKETS
- TYPING RIBBONS
- ACCORDIAN FILES
- CARD INDEX FILES
- STAPLING MACHINES
- UNDERWOOD AGENTS

### White Cross Drug Company

### GENERAL MOTORS

# SPRING SHOWING



See the

## NEW CHEVROLET SIX

- a Six in the price range of the four!

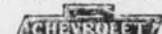
You are cordially invited to visit our special display of the new Chevrolet Six—arranged in conjunction with the nationwide Spring Showing of General Motors cars.

Here, in a price class that has hitherto been occupied exclusively by four-cylinder automobiles, you will see display a line of beautiful models that bring you every advantage of six-cylinder performance. Yet, due to the greatest array of

mechanical advancements that Chevrolet has ever announced, the new Chevrolet Six delivers better than twenty miles to the gallon of gasoline with extremely low oil consumption.

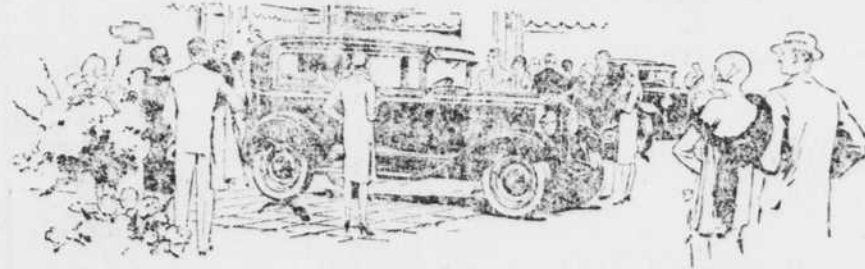
And this amazing six-cylinder performance is matched in impressiveness by the beautiful new Fisher bodies. Come in. See for yourself that no other car in the world can give you so much at prices within the reach of all.

for Economical Transportation



- The COACH \$595
- The Roadster \$525
- The Phaeton \$525
- The Coupe \$595
- The Sedan \$675
- The Sport Chevrolet \$695
- The Convertible Landau \$725
- The Sedan Delivery \$595
- Light Delivery \$400
- Five Ton \$545
- Clavis \$650
- With C.B. \$650

All prices are factory prices. Complete delivered price as well as the list price in considering automobile values. Chevrolet's delivered prices include only reasonable charges for delivery and financing.



You are Cordially Invited to See Our Special Exhibit of the New Chevrolet Six

### J. WARREN WOODARD Dealer

QUALITY AT LOW COST

## That New HOME

Is Not Complete Without a Modern

## TILED BATH

LET US GIVE YOU AN ESTIMATE



### O K Tile and Woodstone Contractors

205 South First Street

## A Real Buy

### 1926 OLDSMOBILE Sedan

**A-1 Condition**

## A.C. GRANT

Ford Garage

CASHMAN'S

## Boulder Canyon Stages

Nevada State Franchise

Regular Trips to Dam Site

TUESDAYS — THURSDAYS — SATURDAYS

25.50 One Way \$4.00 Round Trip

Leave Las Vegas 1 P.M. Return 5 P.M.

Making Connection with Boat to Dam Site

Special Trips to Dam Site

3 Passengers or Less \$12.00 3 Passengers or More \$4.00 Each

AUTOMOBILES TO ANY POINT

RATES ON APPLICATION

LAS VEGAS, NEVADA

167 NORTH MAIN ST. PHONE 116

## MACHINE SHOP

### EXPERT AUTOMOBILE REPAIRING

A Fully Equipped Plant to handle any Repair Job

Nevada Garage

PHONE 135 113 SOUTH MAIN



### Springtime travel!



### LOW FARES NOW

- SAN BERNARDINO \$6.69
- LOS ANGELES \$7.80
- SALT LAKE CITY \$11.95
- DENVER \$23.50
- KANSAS CITY \$37.00
- CHICAGO \$45.00

Twice Daily—Straight Thru

DEPOT—OVERLAND HOTEL

Phone 59

### Pickwick Stages

The finest Gasoline we have ever offered to Pacific Coast Motorists

### STANDARD ETHYL



A GREAT NEW GASOLINE plus ETHYL A PREMIUM MOTOR FUEL

STANDARD OIL COMPANY OF CALIFORNIA